

PRODUCED BY AN AUTODESK EDUCATIONAL PRODUCT

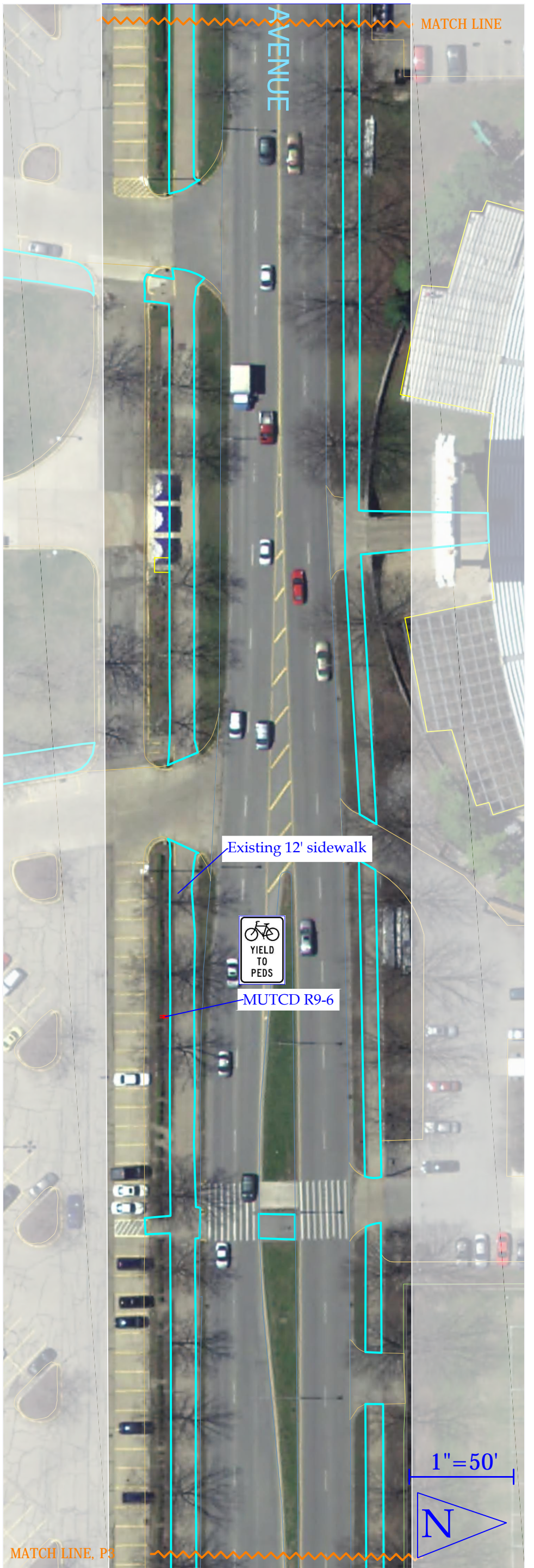
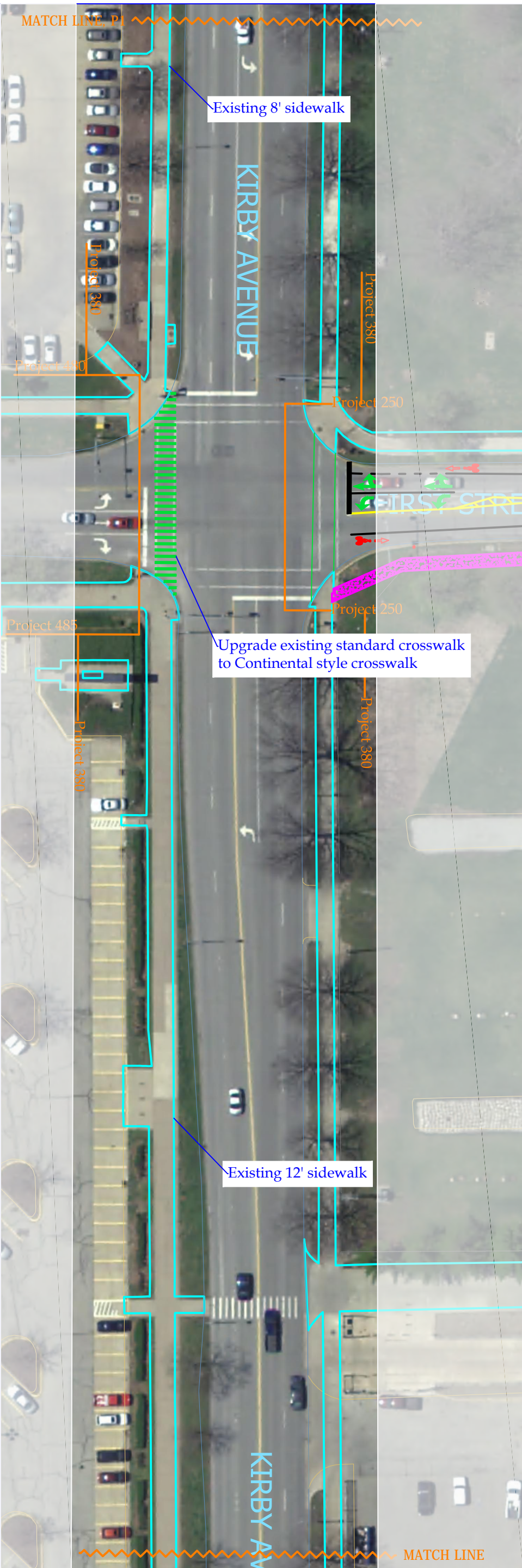
PRODUCED BY AN AUTODESK EDUCATIONAL PRODUCT

Facilities & Services
ILLINOIS
 UNIVERSITY OF ILLINOIS AT URBANA-CHAMPAIGN

Drawing by: Holly Nelson
 Date: 4/12/2012
 Scale: 1" = 50'

Project Number: 380
 Drawing Number: 1/4
 Description: Kirby from Neil to Wright

PROPOSED CAMPUS
 BICYCLE NETWORK



PRODUCED BY AN AUTODESK EDUCATIONAL PRODUCT

PRODUCED BY AN AUTODESK EDUCATIONAL PRODUCT

Facilities & Services




ILLINOIS

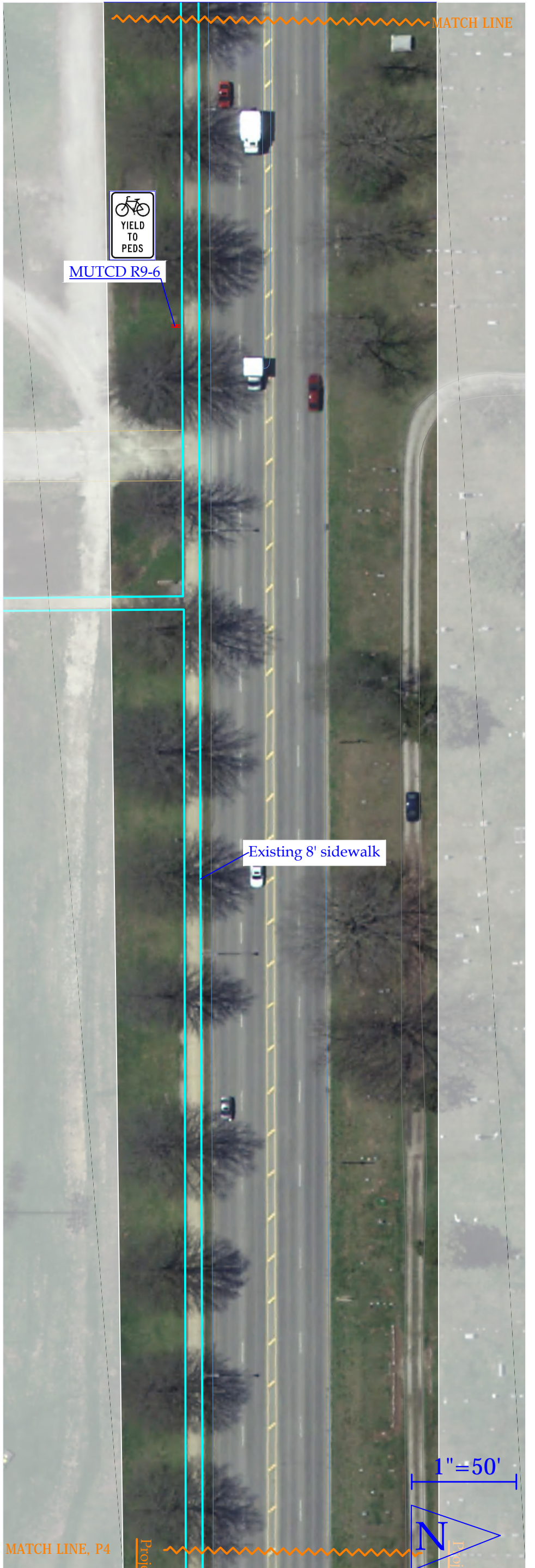
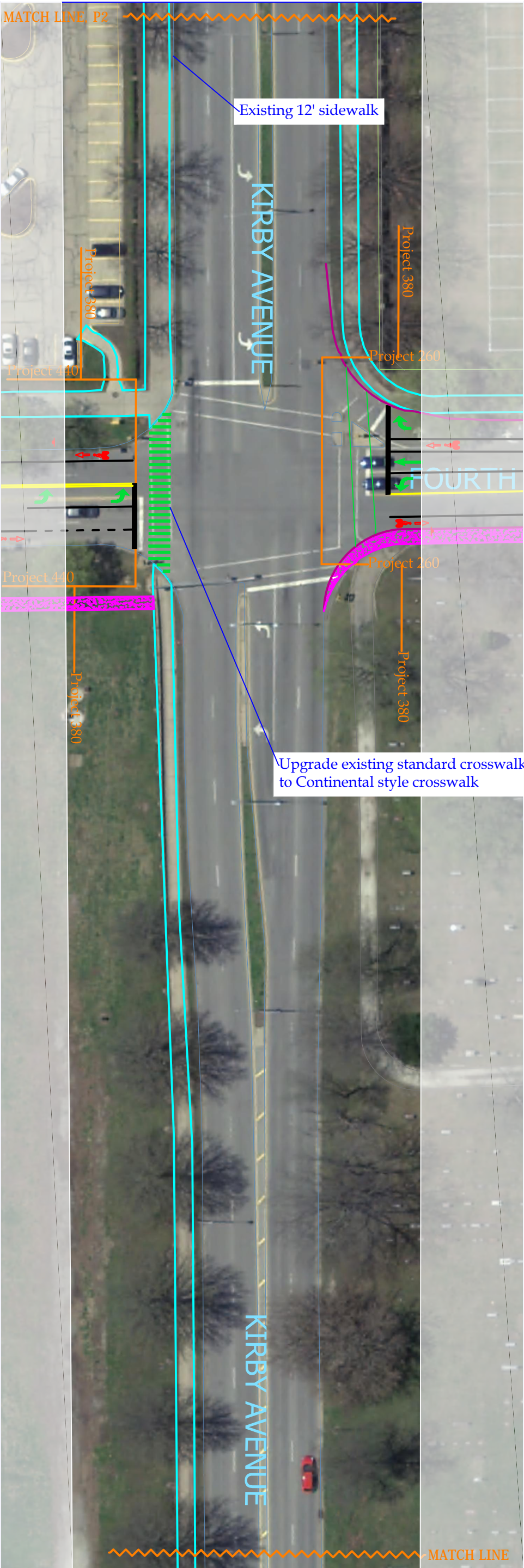
UNIVERSITY OF ILLINOIS AT URBANA-CHAMPAIGN

Drawing by: Holly Nelson
 Date: 4/12/2012
 Scale: 1" = 50'

Project Number: 380
 Drawing Number: 2/4
 Description: Kirby from Neil to Wright

PROPOSED CAMPUS BICYCLE NETWORK





PRODUCED BY AN AUTODESK EDUCATIONAL PRODUCT

PRODUCED BY AN AUTODESK EDUCATIONAL PRODUCT

Facilities & Services



ILLINOIS

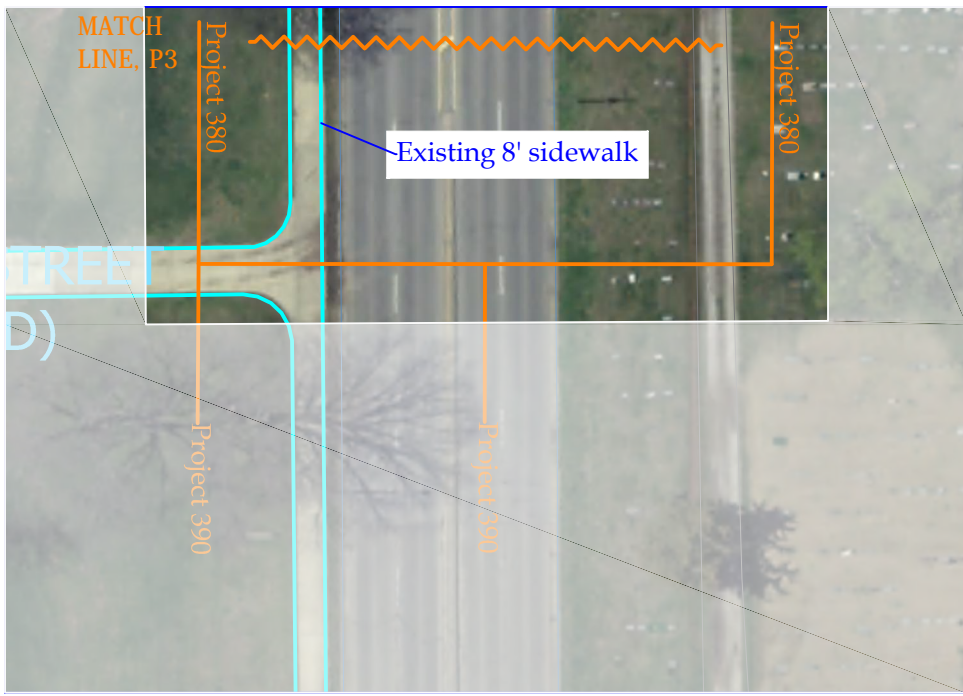
UNIVERSITY OF ILLINOIS AT URBANA-CHAMPAIGN

Drawing by: Holly Nelson
 Date: 4/12/2012
 Scale: 1" = 50'

Project Number: 380
 Drawing Number: 3/4
 Description: Kirby from Neil to Wright



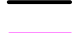

PROPOSED CAMPUS BICYCLE NETWORK



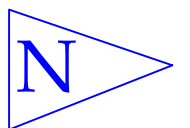


Notes:

MUTCD R9-6: One signpost with two signs (one facing west, one facing east).

- Legend:
-  Existing sidewalks
 -  Existing buildings
 -  Crosswalks
 -  Stoplans
 -  New road edge
 -  New lane lines (yellow)
 -  New lane lines (white)
 -  New sidewalks
 -  Sign
 -  Landscaped area

1" = 50'



Facilities & Services



Drawing by: Holly Nelson

Project Number: 380

Date: 4/12/2012

Drawing Number: 4/4

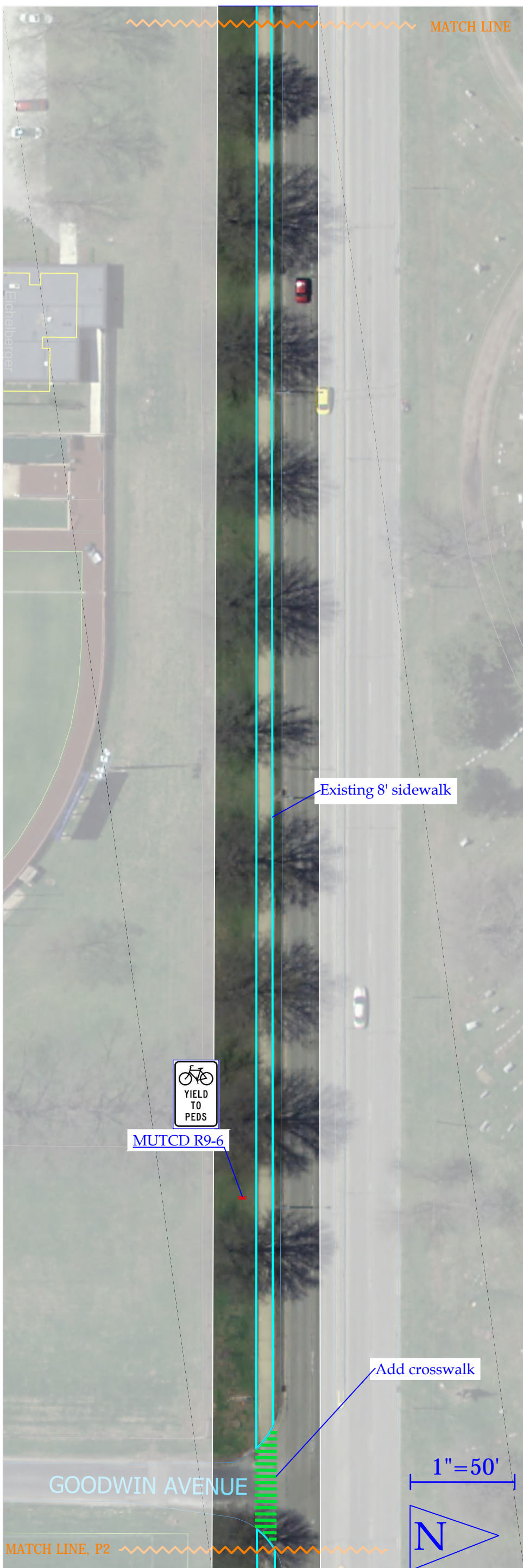
Scale: 1" = 50'

Description: Kirby from Neil to Wright

PROPOSED CAMPUS BICYCLE NETWORK



PRODUCED BY AN AUTODESK EDUCATIONAL PRODUCT



PRODUCED BY AN AUTODESK EDUCATIONAL PRODUCT

Facilities & Services



ILLINOIS
UNIVERSITY OF ILLINOIS AT URBANA-CHAMPAIGN

Drawing by: Holly Nelson

Date: 4/19/2012

Scale: 1" = 50'

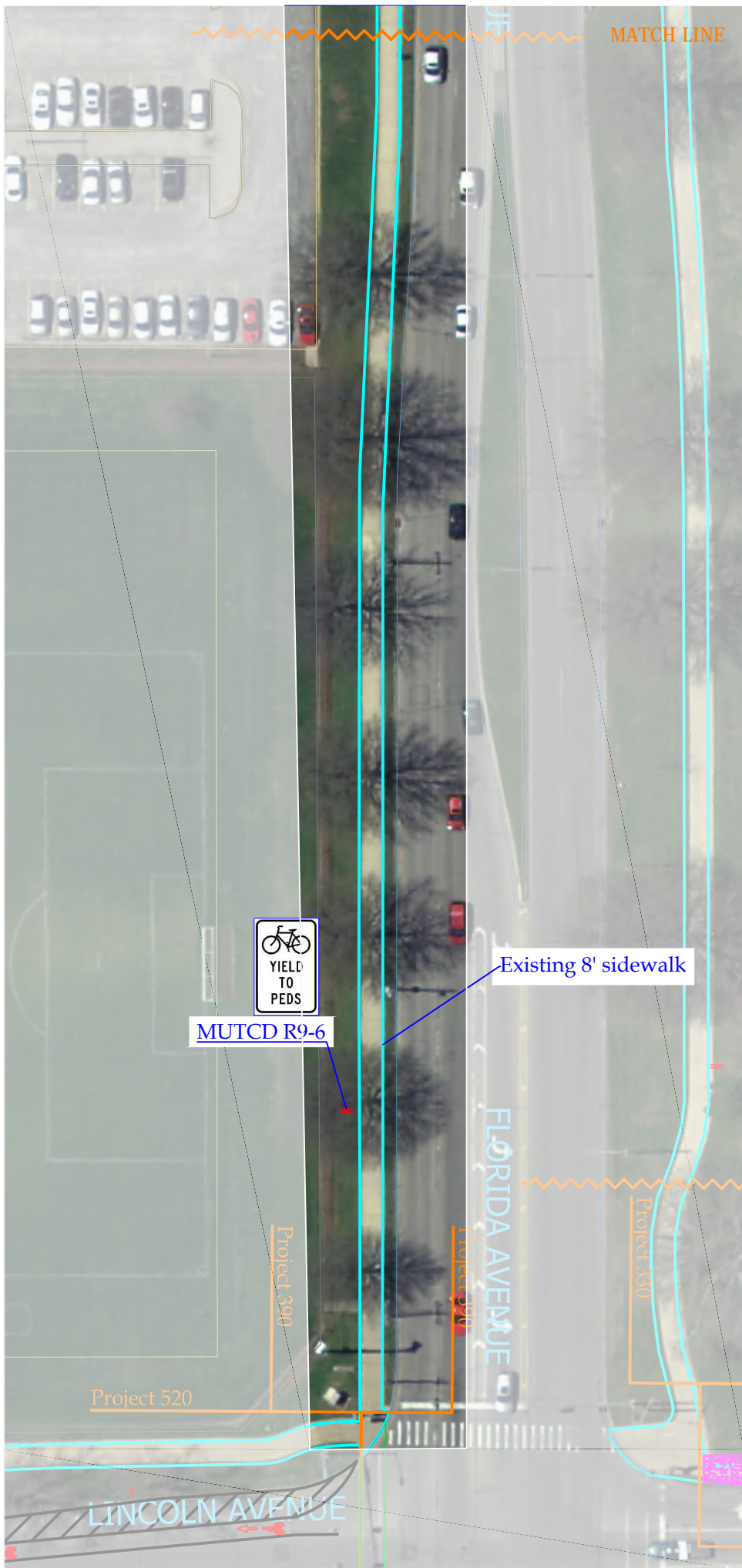
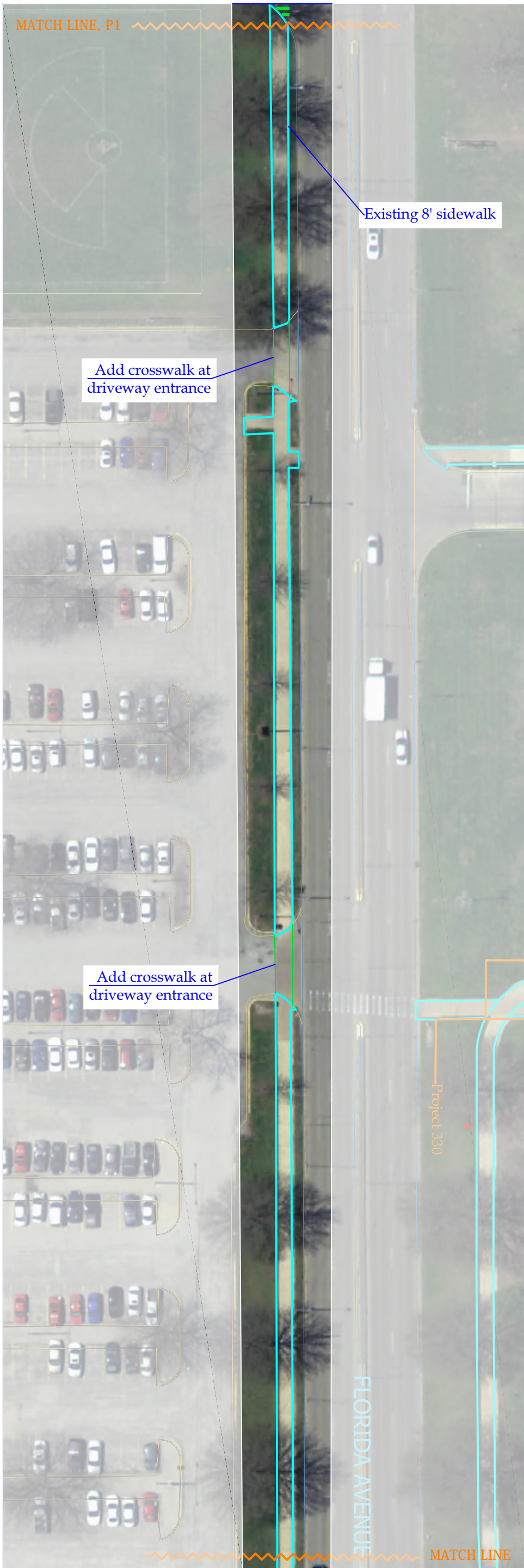
Project Number: 390

Drawing Number: 1/2

Description: Florida from Wright to Lincoln

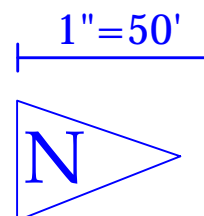
PROPOSED CAMPUS BICYCLE NETWORK





Notes:
 MUTCD R9-6: One signpost with two signs. One sign facing east and one sign facing west.

- Legend:
- Existing sidewalks
 - Existing buildings
 - Crosswalks
 - Stoplines
 - New road edge
 - New lane lines (yellow)
 - New lane lines (white)
 - New sidewalks
 - Sign
 - Landscaped area



Facilities & Services



UNIVERSITY OF ILLINOIS AT URBANA-CHAMPAIGN

Drawing by: Holly Nelson

Date: 4/19/2012

Scale: 1" = 50'

Project Number: 390

Drawing Number: 2/2

Description: Florida from Wright to Lincoln

PROPOSED CAMPUS BICYCLE NETWORK

