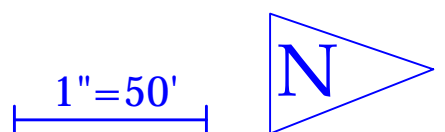


Notes:

- MUTCD R1-1: Use 18" x 18" sign, suitable for shared use path.
- MUTCD R9-6: One signpost with two signs (one facing west, one facing east)
- Existing bicycle path to be removed to provide additional landscaped area. Total of 4442 sq ft of pavement to be replaced by landscaping.
- Existing 8' sidewalk should be widened to 12' when replaced. 9,334 sq ft of pavement to be removed and replaced with 13,020 sq ft of pavement. New sidewalk will be 8" thick, have expansion joints at a maximum of 40' apart, have score joints at a maximum of 6' apart, and provide positive drainage at slope of 1/4 inch per foot.

- Legend:
- Existing sidewalks
 - Existing buildings
 - Crosswalks
 - Stoplines
 - New road edge
 - New lane lines (yellow)
 - New lane lines (white)
 - New sidewalks
 - Sign
 - Landscaped area



PRODUCED BY AN AUTODESK EDUCATIONAL PRODUCT

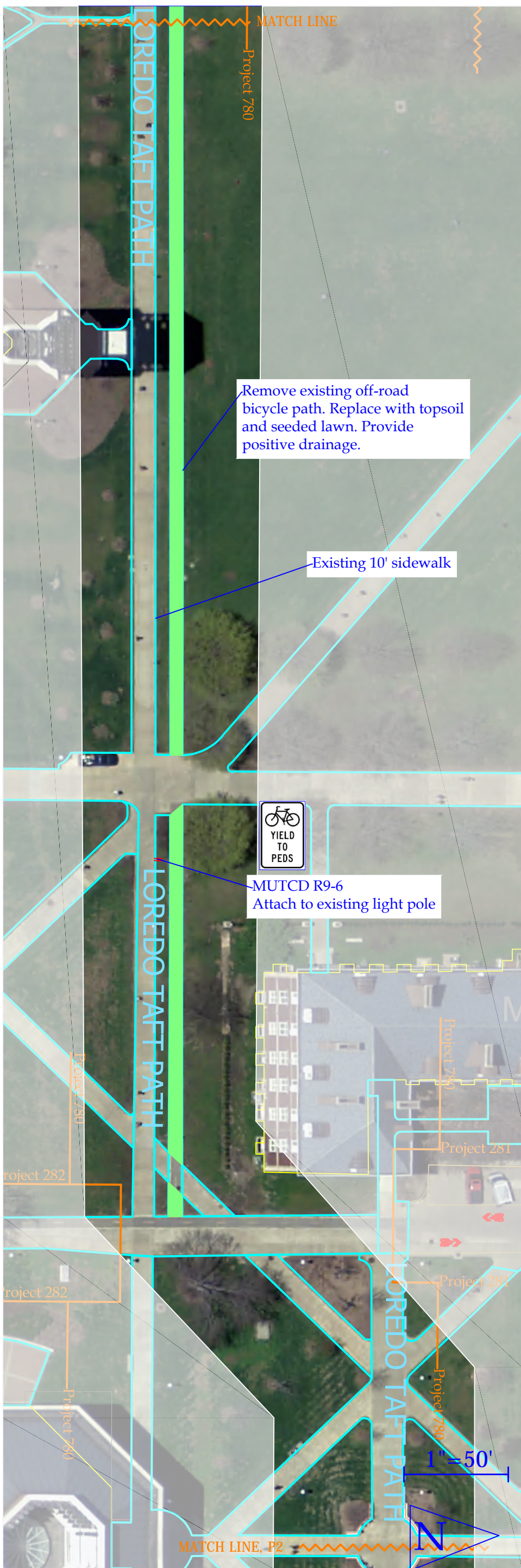
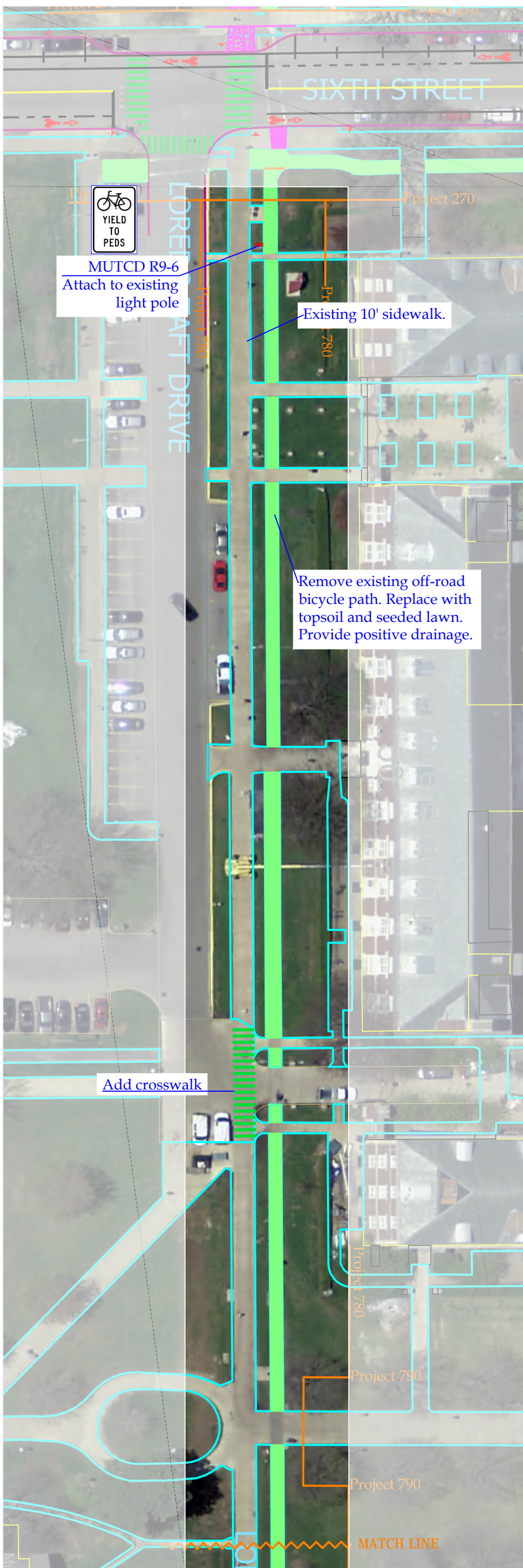
PRODUCED BY AN AUTODESK EDUCATIONAL PRODUCT

Facilities & Services
ILLINOIS
 UNIVERSITY OF ILLINOIS AT URBANA-CHAMPAIGN

Drawing by: Holly Nelson
 Date: 1/24/2012
 Scale: 1" = 50'

Project Number: 770
 Drawing Number: 1/1
 Description: Loredo Taft from Euclid to Sixth

PROPOSED CAMPUS BICYCLE NETWORK



PRODUCED BY AN AUTODESK EDUCATIONAL PRODUCT

PRODUCED BY AN AUTODESK EDUCATIONAL PRODUCT

Facilities & Services



UNIVERSITY OF ILLINOIS AT URBANA-CHAMPAIGN

Drawing by: Holly Nelson

Date: 4/12/2012

Scale: 1" = 50'

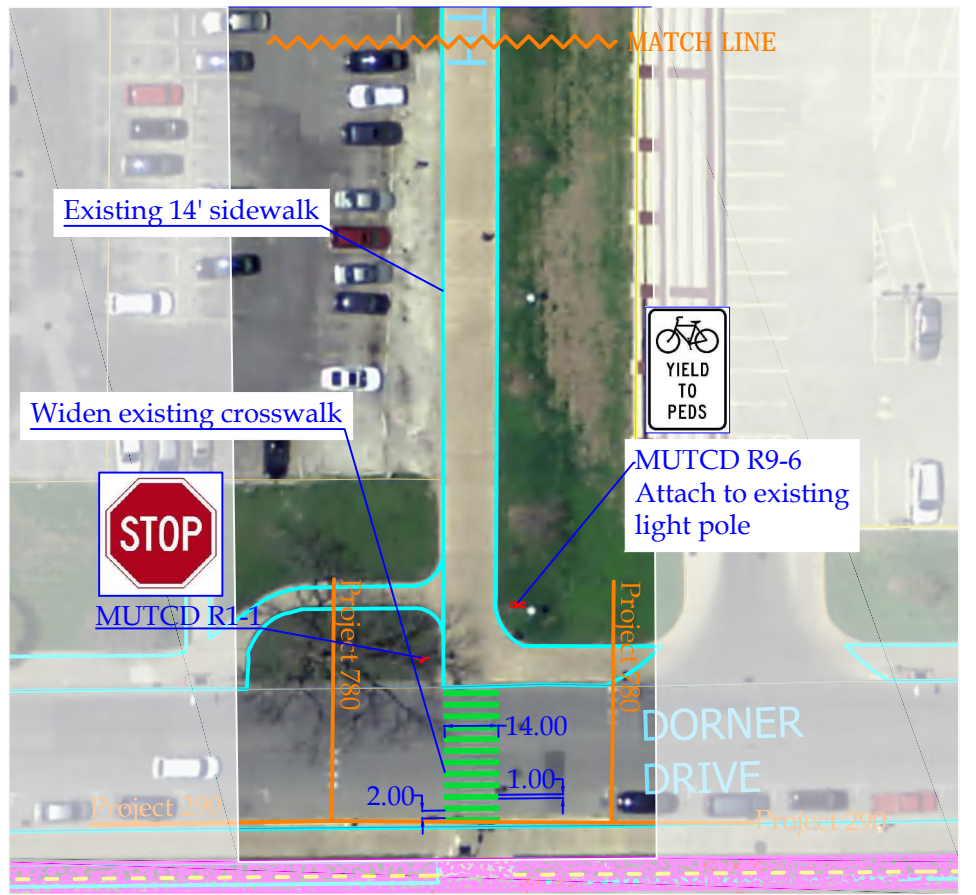
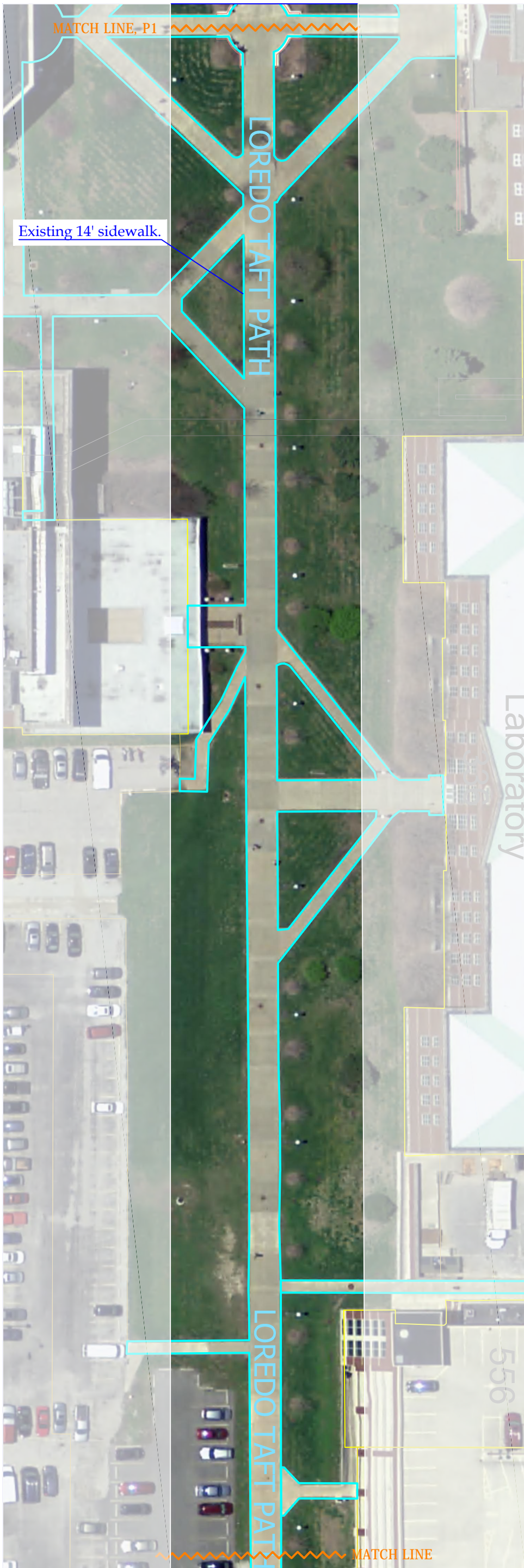
Project Number: 780

Drawing Number: 1/2

Description: Loredo Taft from Sixth to Dorner

PROPOSED CAMPUS BICYCLE NETWORK





Notes:

MUTCD R9-6: One signpost with two signs (one facing west, one facing east)

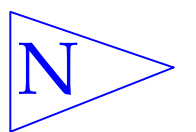
MUTCD R1-1: Use 18" x 18" sign, suitable for shared use path

Approximately 6,878 sq. ft. of bicycle path pavement to be removed. Replace with 6,878 sq. ft. of topsoil and seeded lawn. Provide positive drainage. .

Legend:

- Existing sidewalks
- Existing buildings
- Crosswalks
- Stoplins
- New road edge
- New lane lines (yellow)
- New lane lines (white)
- New sidewalks
- Sign
- Landscaped area

1" = 50'



PRODUCED BY AN AUTODESK EDUCATIONAL PRODUCT

PRODUCED BY AN AUTODESK EDUCATIONAL PRODUCT

Facilities & Services



Drawing by: Holly Nelson

Date: 4/12/2012

Scale: 1" = 50'

Project Number: 780

Drawing Number: 2/2

Description: Loredo Taft from Sixth to Dorner

PROPOSED CAMPUS BICYCLE NETWORK

