

PRODUCED BY AN AUTODESK EDUCATIONAL PRODUCT

PRODUCED BY AN AUTODESK EDUCATIONAL PRODUCT

Facilities & Services



Drawing by: Holly Nelson

Project Number: 460

Date: 5/17/2012

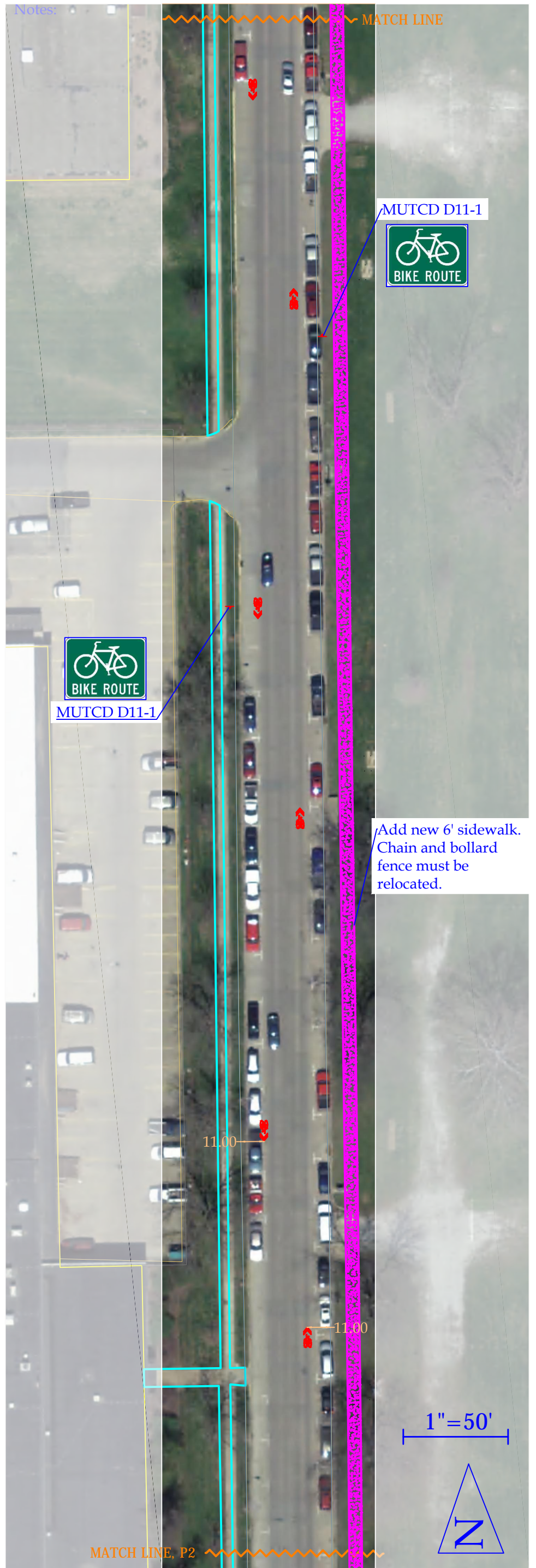
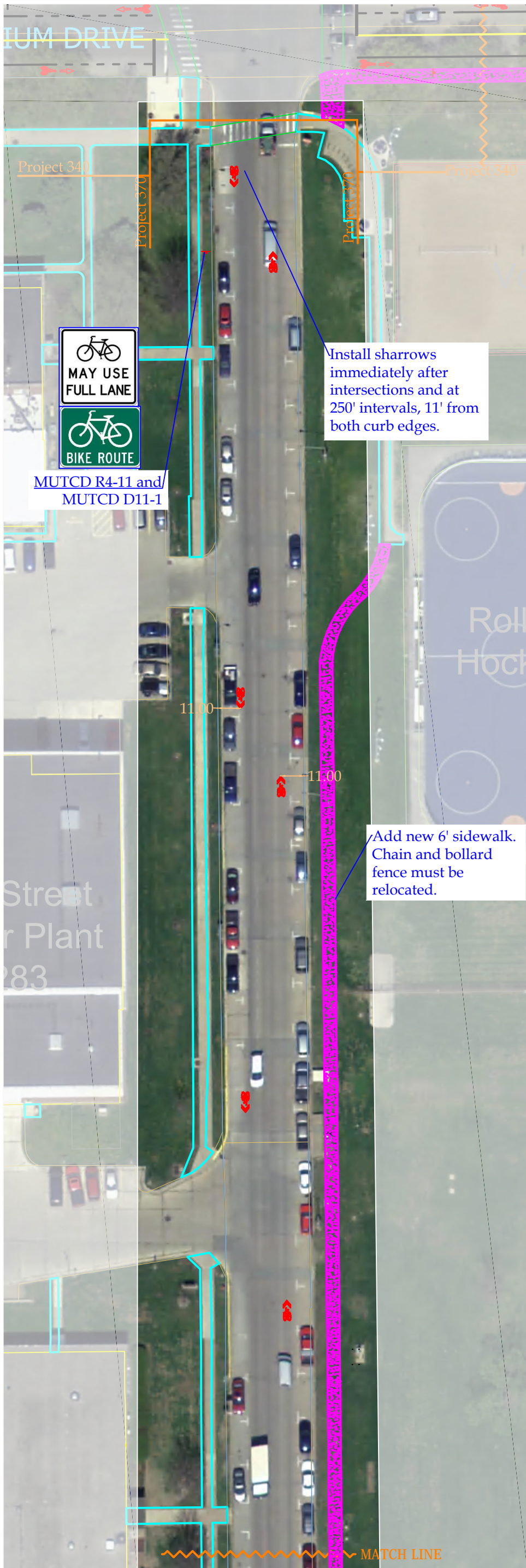
Drawing Number: 1/2

Scale: 1" = 50'

Description: Oak Street from Kirby to St. Mary's

PROPOSED CAMPUS BICYCLE NETWORK





PRODUCED BY AN AUTODESK EDUCATIONAL PRODUCT

PRODUCED BY AN AUTODESK EDUCATIONAL PRODUCT

Facilities & Services



UNIVERSITY OF ILLINOIS AT URBANA-CHAMPAIGN

Drawing by: Holly Nelson

Date: 4/12/2012

Scale: 1" = 50'

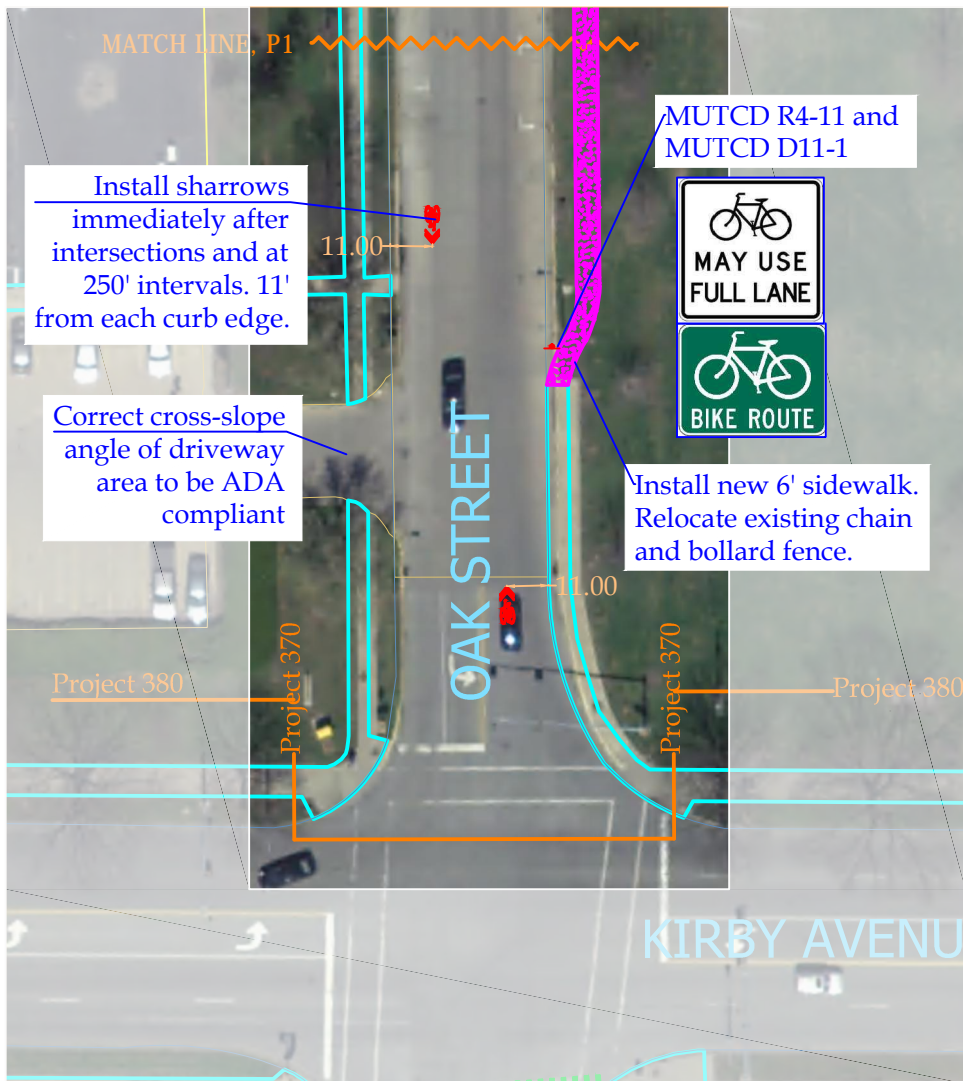
Project Number: 370

Drawing Number: 1/2

Description: Oak Street from Stadium to Kirby

PROPOSED CAMPUS BICYCLE NETWORK





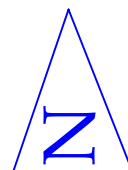
Notes:

Center of shared lane marking should be placed at least 11' from face of west and east curbs (due to parking). Place immediately after intersections and at intervals of no more than 250'.

Proposed 6' sidewalk will be 8" thick, have expansion joints at a maximum of 40' apart, have score joints at a maximum of 6' apart, and provide positive drainage at slope of 1/4 inch per foot.

- Legend:
- Existing sidewalks
 - Existing buildings
 - Crosswalks
 - Stoplines
 - New road edge
 - New lane lines (yellow)
 - New lane lines (white)
 - New sidewalks
 - Sign
 - Landscaped area

1" = 50'



Facilities & Services



Drawing by: Holly Nelson

Date: 4/12/2012

Scale: 1" = 50'

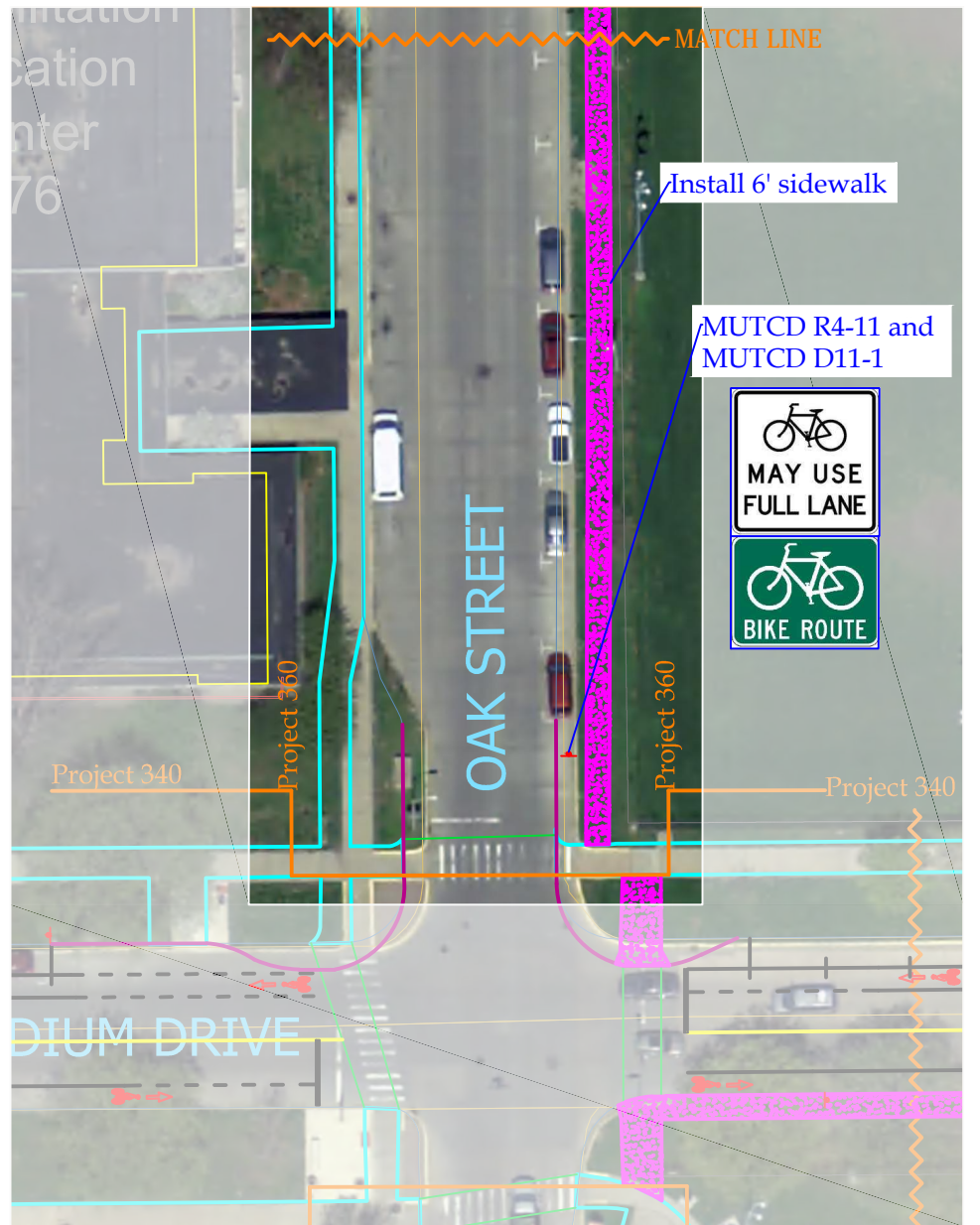
Project Number: 370

Drawing Number: 2/2

Description: Oak Street from Stadium to Kirby

PROPOSED CAMPUS BICYCLE NETWORK





Notes:

Proposed 6' sidewalk will be 8" thick, have expansion joints at a maximum of 40' apart, have score joints at a maximum of 6' apart, and provide positive drainage at slope of 1/4 inch per foot. A total of approximately 2,531 sq. ft. of pavement will be installed.

- Legend:
- Existing sidewalks
 - Existing buildings
 - Crosswalks
 - Stoplines
 - New road edge
 - New lane lines (yellow)
 - New lane lines (white)
 - New sidewalks
 - Sign
 - Landscaped area

1" = 50'



PRODUCED BY AN AUTODESK EDUCATIONAL PRODUCT

PRODUCED BY AN AUTODESK EDUCATIONAL PRODUCT

Facilities & Services



Drawing by: Holly Nelson

Date: 4/13/2012

Scale: 1" = 50'

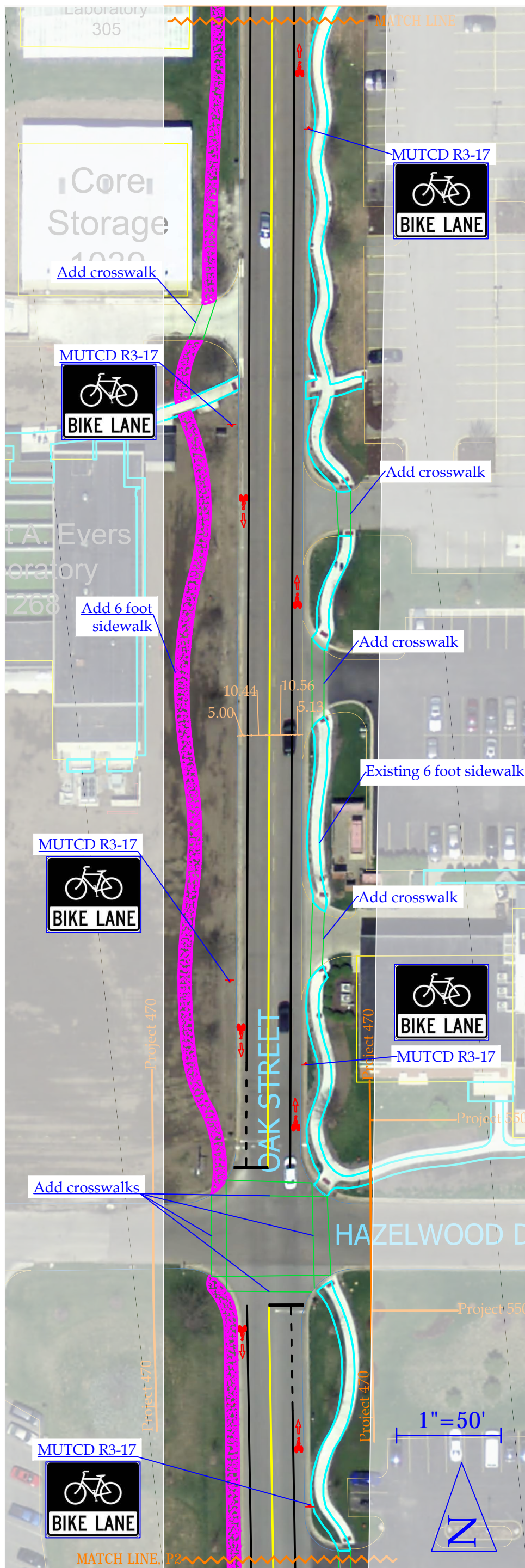
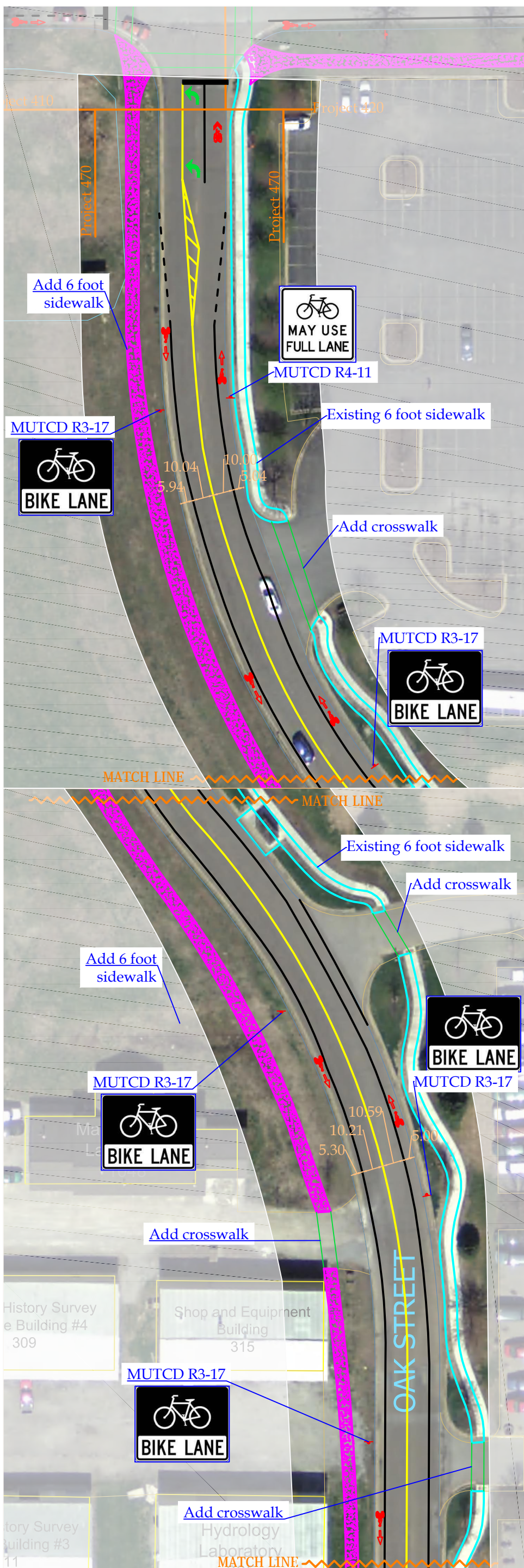
Project Number: 360

Drawing Number: 1/1

Description: Oak Street from Armory to Stadium

PROPOSED CAMPUS BICYCLE NETWORK





Facilities & Services



UNIVERSITY OF ILLINOIS AT URBANA-CHAMPAIGN

Drawing by: Holly Nelson

Date: 5/21/2012

Scale: 1" = 50'

Project Number: 470

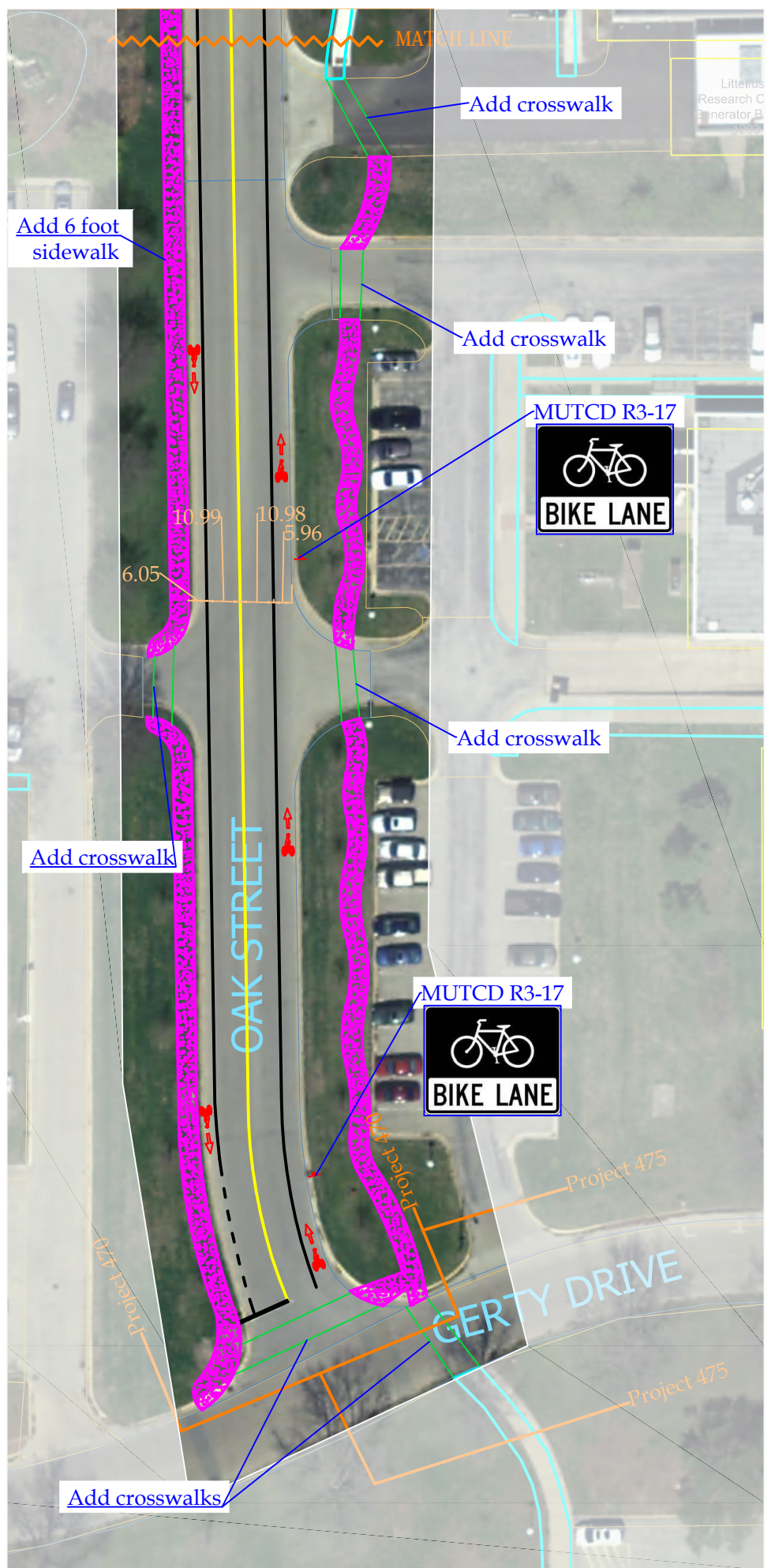
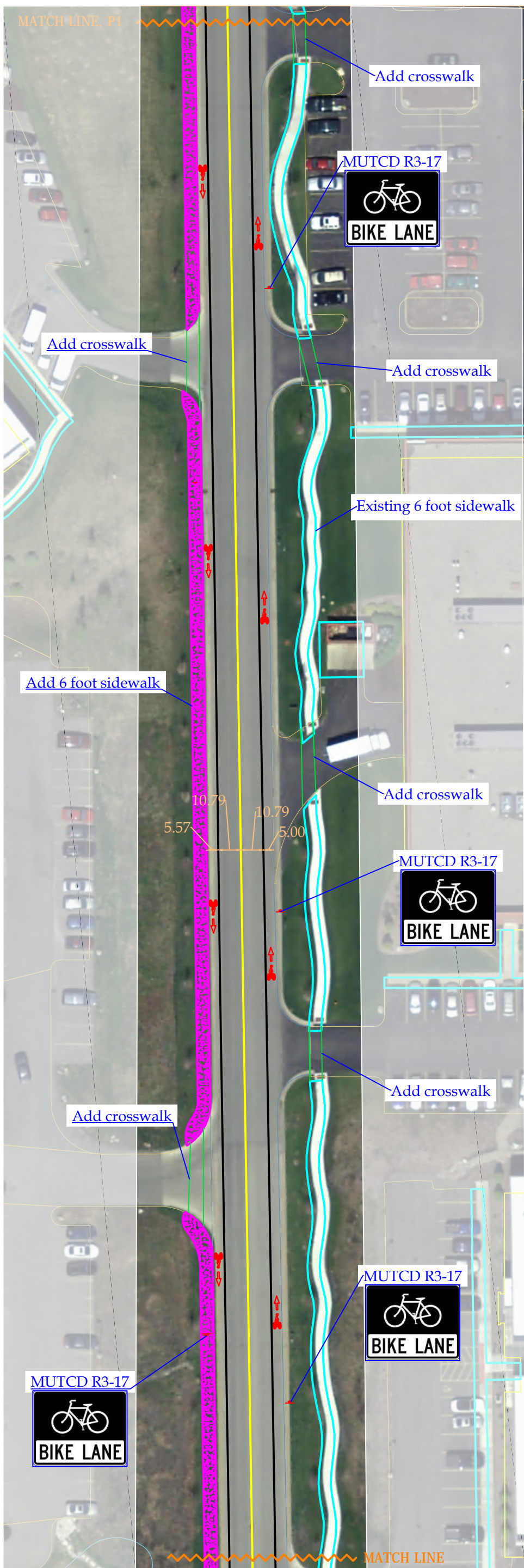
Drawing Number: 1/2

Description: Oak Street from St. Mary's to Gerty

PROPOSED CAMPUS BICYCLE NETWORK



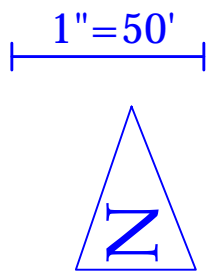
PRODUCED BY AN AUTODESK EDUCATIONAL PRODUCT



PRODUCED BY AN AUTODESK EDUCATIONAL PRODUCT

Notes:
 Design concept based on 2008 St. Mary's Road Corridor Study by the Champaign County Regional Planning Commission.
 Proposed sidewalk will be 8" thick, have expansion joints at a maximum of 40' apart, have score joints at a maximum of 6' apart, and provide positive drainage at a slope of 1/4 inch per foot. Approximately 17,958 sq. ft. of sidewalk to be added.

- Legend:
- Existing sidewalks
 - Existing buildings
 - Crosswalks
 - Stoplines
 - New road edge
 - New lane lines (yellow)
 - New lane lines (white)
 - New sidewalks
 - Sign
 - Landscaped area



Facilities & Services
ILLINOIS
 UNIVERSITY OF ILLINOIS AT URBANA-CHAMPAIGN

Drawing by: Holly Nelson
 Date: 5/21/2012
 Scale: 1" = 50'

Project Number: 470
 Drawing Number: 2/2
 Description: Oak Street from St. Mary's to Gerty

PROPOSED CAMPUS
 BICYCLE NETWORK