

PRODUCED BY AN AUTODESK EDUCATIONAL PRODUCT

PRODUCED BY AN AUTODESK EDUCATIONAL PRODUCT

Facilities & Services



ILLINOIS
UNIVERSITY OF ILLINOIS AT URBANA-CHAMPAIGN

Drawing by: Holly Nelson

Date: 4/20/2012

Scale: 1" = 50'

Project Number: 400

Drawing Number: 1/4

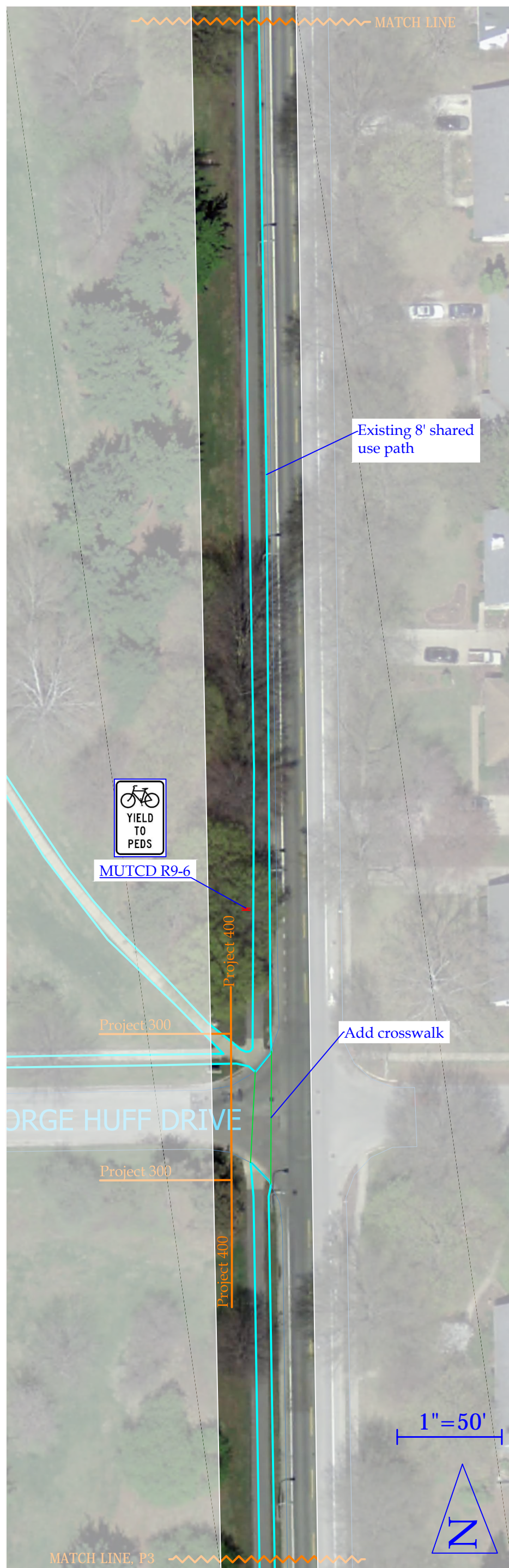
Description: Race Street from Florida to Windsor

PROPOSED CAMPUS BICYCLE NETWORK





Existing 8' shared use path



Existing 8' shared use path



MUTCD R9-6

Add crosswalk

1" = 50'



Facilities & Services



Drawing by: Holly Nelson

Date: 4/20/2012

Scale: 1" = 50'

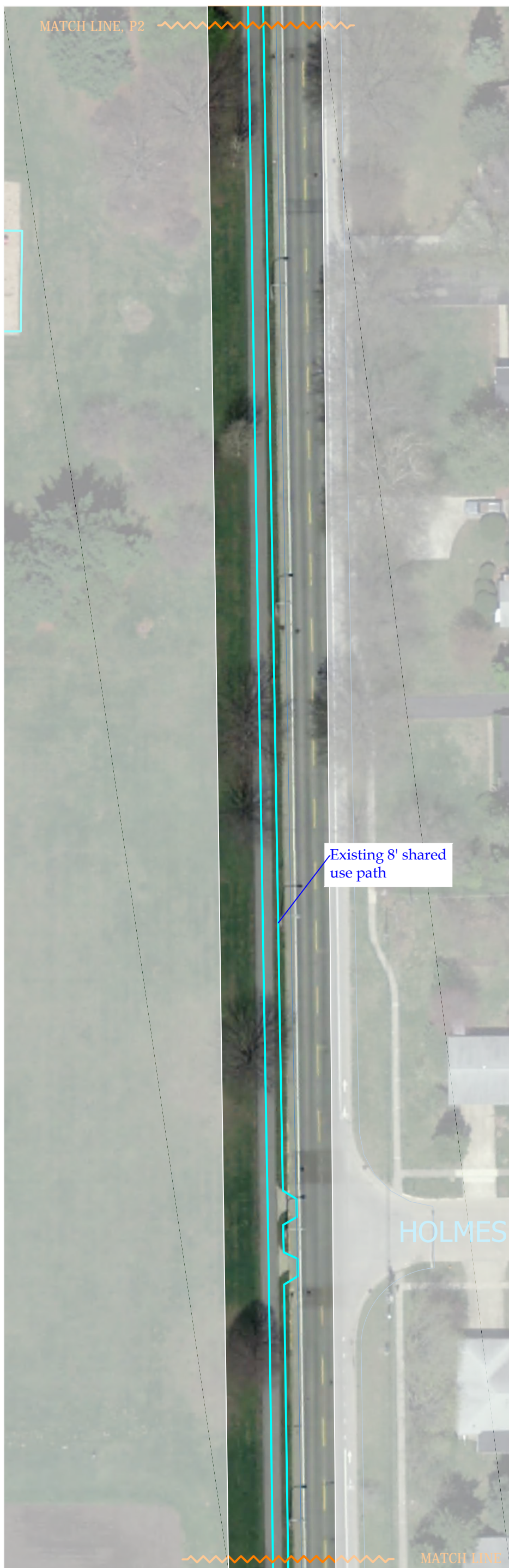
Project Number: 400

Drawing Number: 2/4

Description: Race Street from Florida to Windsor

PROPOSED CAMPUS BICYCLE NETWORK





Facilities & Services



ILLINOIS

UNIVERSITY OF ILLINOIS AT URBANA-CHAMPAIGN

Drawing by: Holly Nelson

Date: 4/20/2012

Scale: 1" = 50'

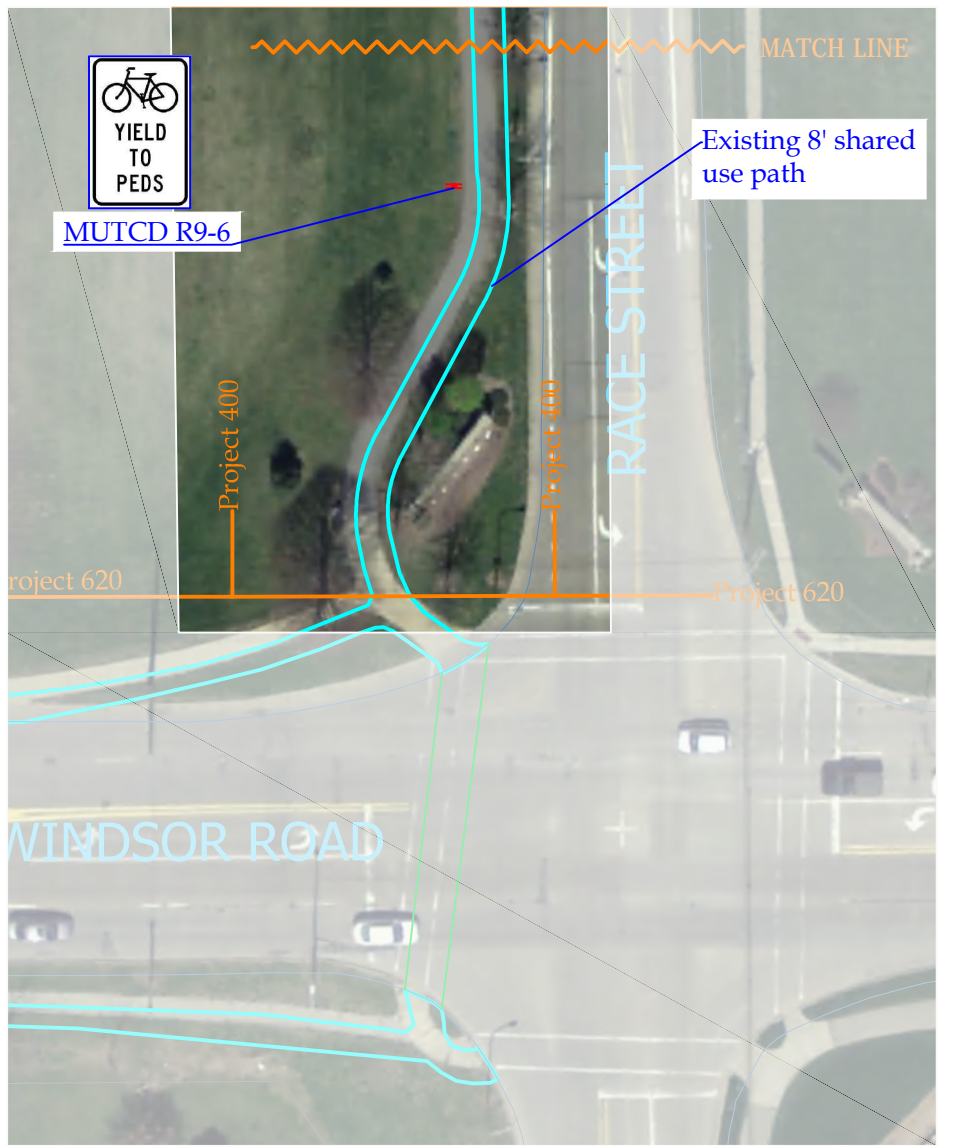
Project Number: 400

Drawing Number: 3/4

Description: Race Street from Florida to Windsor

PROPOSED CAMPUS BICYCLE NETWORK



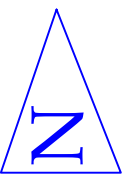


Notes:

MUTCD R9-6: One signpost with two signs (one facing north and one facing south).

- Legend:
- Existing sidewalks
 - Existing buildings
 - Crosswalks
 - Stoplines
 - New road edge
 - New lane lines (yellow)
 - New lane lines (white)
 - New sidewalks
 - Sign
 - Landscaped area

1" = 50'



PRODUCED BY AN AUTODESK EDUCATIONAL PRODUCT

PRODUCED BY AN AUTODESK EDUCATIONAL PRODUCT

Facilities & Services



ILLINOIS
UNIVERSITY OF ILLINOIS AT URBANA-CHAMPAIGN

Drawing by: Holly Nelson

Date: 4/20/2012

Scale: 1" = 50'

Project Number: 400

Drawing Number: 4/4

Description: Race Street from Florida to Windsor

PROPOSED CAMPUS BICYCLE NETWORK

