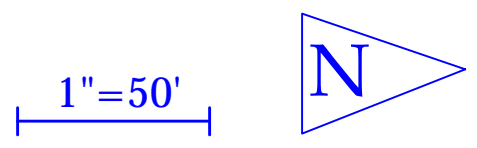


Notes:  
 MUTCD R9-6: One signpost with two signs (one facing west, one facing east)

PRODUCED BY AN AUTODESK EDUCATIONAL PRODUCT

PRODUCED BY AN AUTODESK EDUCATIONAL PRODUCT

- Legend:
- Existing sidewalks
  - Existing buildings
  - Crosswalks
  - Stoplines
  - New road edge
  - New lane lines (yellow)
  - New lane lines (white)
  - New sidewalks
  - Sign
  - Landscaped area

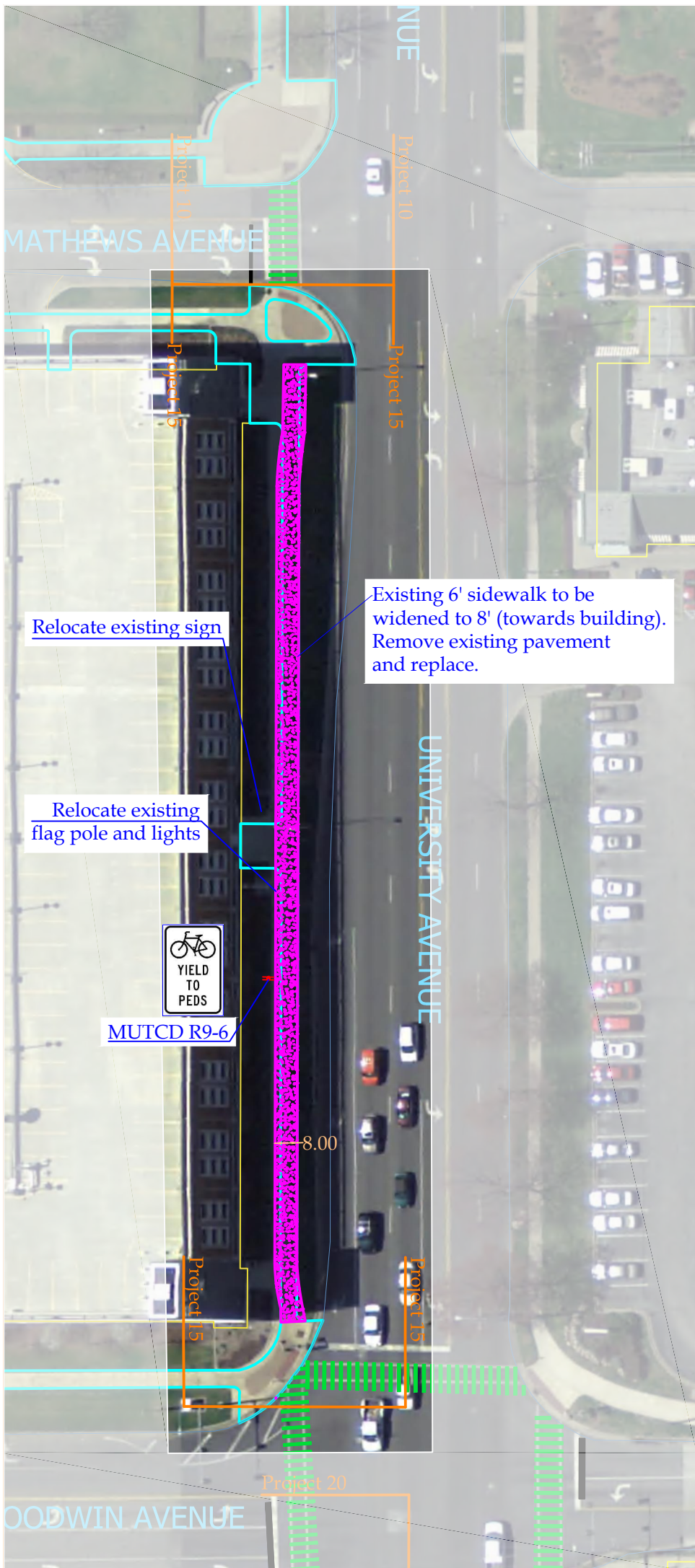


Facilities & Services  
**ILLINOIS**  
 UNIVERSITY OF ILLINOIS AT URBANA-CHAMPAIGN

Drawing by: Holly Nelson  
 Date: 2/10/2012  
 Scale: 1" = 50'

Project Number: 10  
 Drawing Number: 1/1  
 Description: University from Wright to Mathews

PROPOSED CAMPUS  
 BICYCLE NETWORK



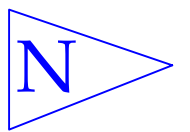
Notes:



MUTCD R9-6: One signpost with two signs (one facing west, one facing east)

Proposed 8' sidewalk will be 8" thick, have expansion joints at a maximum of 40' apart, have score joints at a maximum of 6' apart, and provide positive drainage at slope of 1/4 inch per foot. Approximately 2148 sq. ft. of pavement will be removed and 2770 sq. ft. will be poured. Bushes next to building may need to be removed.

- Legend:
- Existing sidewalks
  - Existing buildings
  - Crosswalks
  - Stoplines
  - New road edge
  - New lane lines (yellow)
  - New lane lines (white)
  - New sidewalks
  - Sign
  - Landscaped area

1" = 50'



<p>Facilities &amp; Services</p>  <p><b>ILLINOIS</b> UNIVERSITY OF ILLINOIS AT URBANA-CHAMPAIGN</p>	<p>Drawing by: Holly Nelson</p>	<p>Project Number: 15</p>	<p>PROPOSED CAMPUS BICYCLE NETWORK</p> 
	<p>Date: 4/13/2012</p>	<p>Drawing Number: 1/1</p>	
	<p>Scale: 1" = 50'</p>	<p>Description: University from Mathews to Goodwin</p>	