

Roof Areas | Low Roof

Standing Seam Metal Roofing - 0 Square Feet

PVC Membrane Roofing - 22,728 square feet

Total Roof Area | Low Roof - 22,728 square feet

Note: Roof Hatches, Fans and other Roof Accessories to be painted to match roof color

ROOF AREA SUMMARY

Total PVC Membrane Roofing Area (excluding skylight) - 25,668 square feet

Total Standing Seam Metal Roofing Area (excluding PV panels) - 8,176 Square Feet

Total Roof Area not obscured by PV panels/Skylights - 33,844 square feet

PVC Roofing - Yellow

1 ROOF PLAN
SCALE: 3/32" = 1'-0"

LEED CREDIT SS 7.2 - HEAT ISLAND EFFECT: ROOF

Ratio Architects
Associated Architects / Interiors
301 North Neil St, Ste 102
Champaign, IL 61820

Silman
Structural Engineering
32 Old Slip, 10th Floor
New York, NY 10005

IMEG Corp.
Mechanical / Electrical / Plumbing / Fire Protection
623 26th Ave
Rock Island, IL 61201

Fuhrmann Engineering, Inc.
Civil Engineering / Surveying
1401 Regency Dr East, Suite B
Savoy, IL 61874

Terry Guen Design Associates, Inc.
Landscape Architecture
714 South Dearborn St, Floor 5
Chicago, IL 60605

Atelier Ten
Sustainability / Lighting
195 Church St, 10th Floor
New Haven, CT 06510

Shen Milson & Wike LLC
AV / IT / Security / Acoustics
2 North Riverside Plaza, Ste 1460
Chicago, IL 60606

CCS International Inc.
Cost Management
1815 S. Meyers Rd, Ste 1460
Oakbrook Terrace, IL 60181

Bohlin Cywinski Jackson
Architecture Planning Interior Design
Wilkes-Barre Pittsburgh Philadelphia Seattle San Francisco

8 West Market Street
Suite 1200
Wilkes-Barre, PA 18701
v 570.825.8756 f. 570.825.3744

© 2016 Bohlin Cywinski Jackson

General Notes

LOW ROOF PLAN
Issue for Construction

The University of Illinois at Urbana-Champaign
DESIGN CENTER
1208 South Fourth Street, Champaign, IL 61820

June 29, 2018		A1.21
ISSUE DATE		
15110B	BCJ PROJECT NUMBER	
U16015	UI PROJECT NUMBER	
3/32" = 1'-0"	SCALE	SHEET NUMBER
1517	UI BUILDING NUMBER	
Author		Drawn By

Roof Areas | High Roof

Standing Seam Metal Roofing (excluding PV panels) - 8,176 Square Feet

PVC Membrane Roofing (excluding skylight) - 2,940 square feet

Total Roof Area | High Roof - 11,116 square feet

Skylight Area - 537 square feet

PV Solar Panel Area - 3,694 square feet

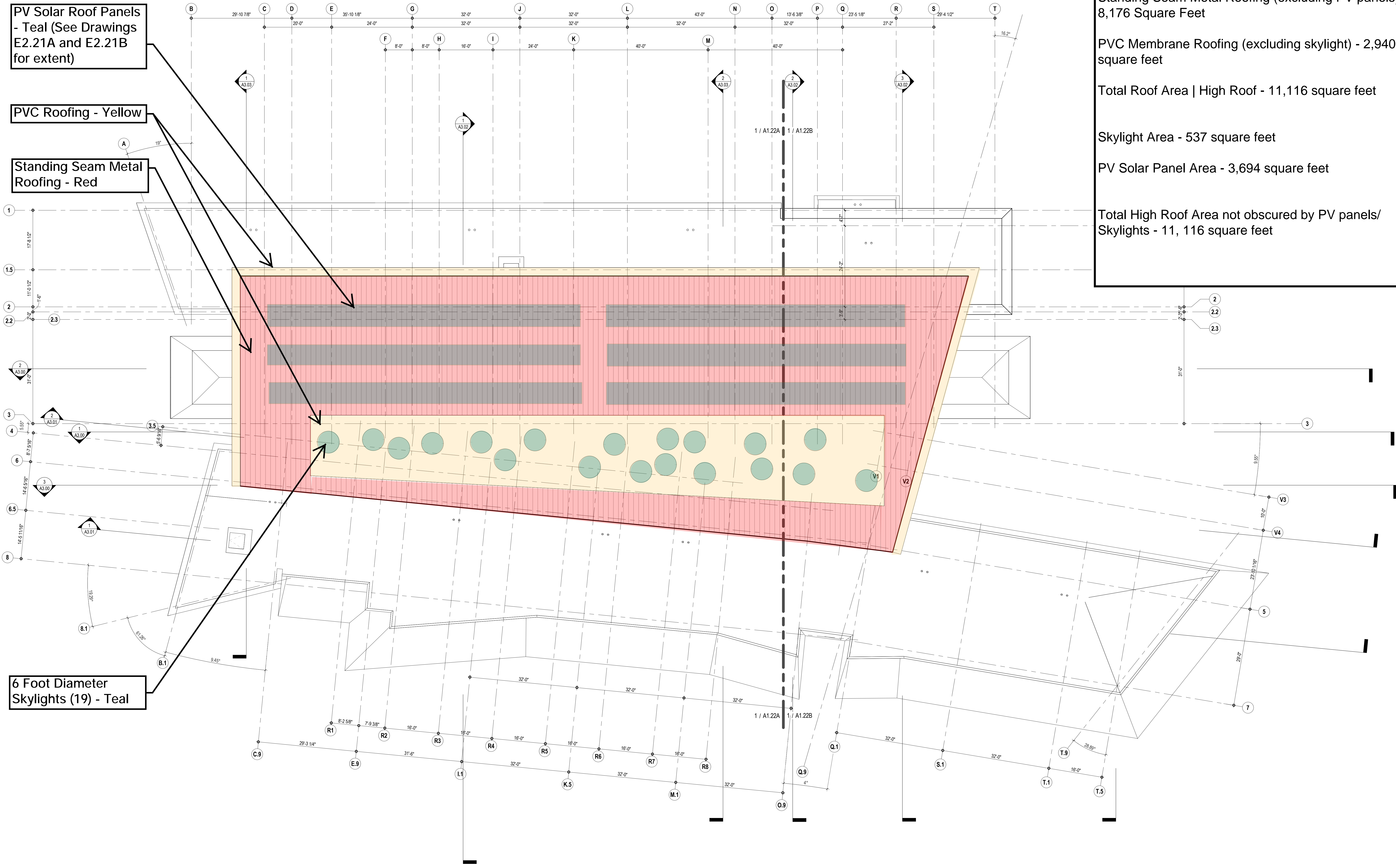
Total High Roof Area not obscured by PV panels/Skylights - 11, 116 square feet

PV Solar Roof Panels - Teal (See Drawings E2.21A and E2.21B for extent)

PVC Roofing - Yellow

Standing Seam Metal Roofing - Red

6 Foot Diameter Skylights (19) - Teal



1 ROOF PLAN
A1.22 SCALE: 3/32" = 1'-0"

LEED CREDIT SS 7.2 - HEAT ISLAND EFFECT: ROOF

Ratio Architects
Associated Architects / Interiors
301 North Neil St, Ste 102
Champaign, IL 61820

Silman
Structural Engineering
32 Old Slip, 10th Floor
New York, NY 10005

IMEG Corp.
Mechanical / Electrical / Plumbing / Fire Protection
623 26th Ave
Rock Island, IL 61201

Fuhrmann Engineering, Inc.
Civil Engineering / Surveying
1401 Regency Dr East, Suite B
Savoy, IL 61874

Terry Guen Design Associates, Inc.
Landscape Architecture
714 South Dearborn St, Floor 5
Chicago, IL 60605

Atelier Ten
Sustainability / Lighting
195 Church St, 10th Floor
New Haven, CT 06510

Shen Milson & Wike LLC
AV / IT / Security / Acoustics
2 North Riverside Plaza, Ste 1460
Chicago, IL 60606

CCS International Inc.
Cost Management
1815 S. Meyers Rd, Ste 1460
Oakbrook Terrace, IL 60181

Bohlin Cywinski Jackson
Architecture Planning Interior Design
Wilkes-Barre Pittsburgh Philadelphia Seattle San Francisco

8 West Market Street
Suite 1200
Wilkes-Barre, PA 18701
v. 570.825.8756 f. 570.825.3744
© 2016 Bohlin Cywinski Jackson

General Notes

HIGH ROOF PLAN
Issue for Construction

The University of Illinois at Urbana-Champaign
DESIGN CENTER
1208 South Fourth Street, Champaign, IL 61820

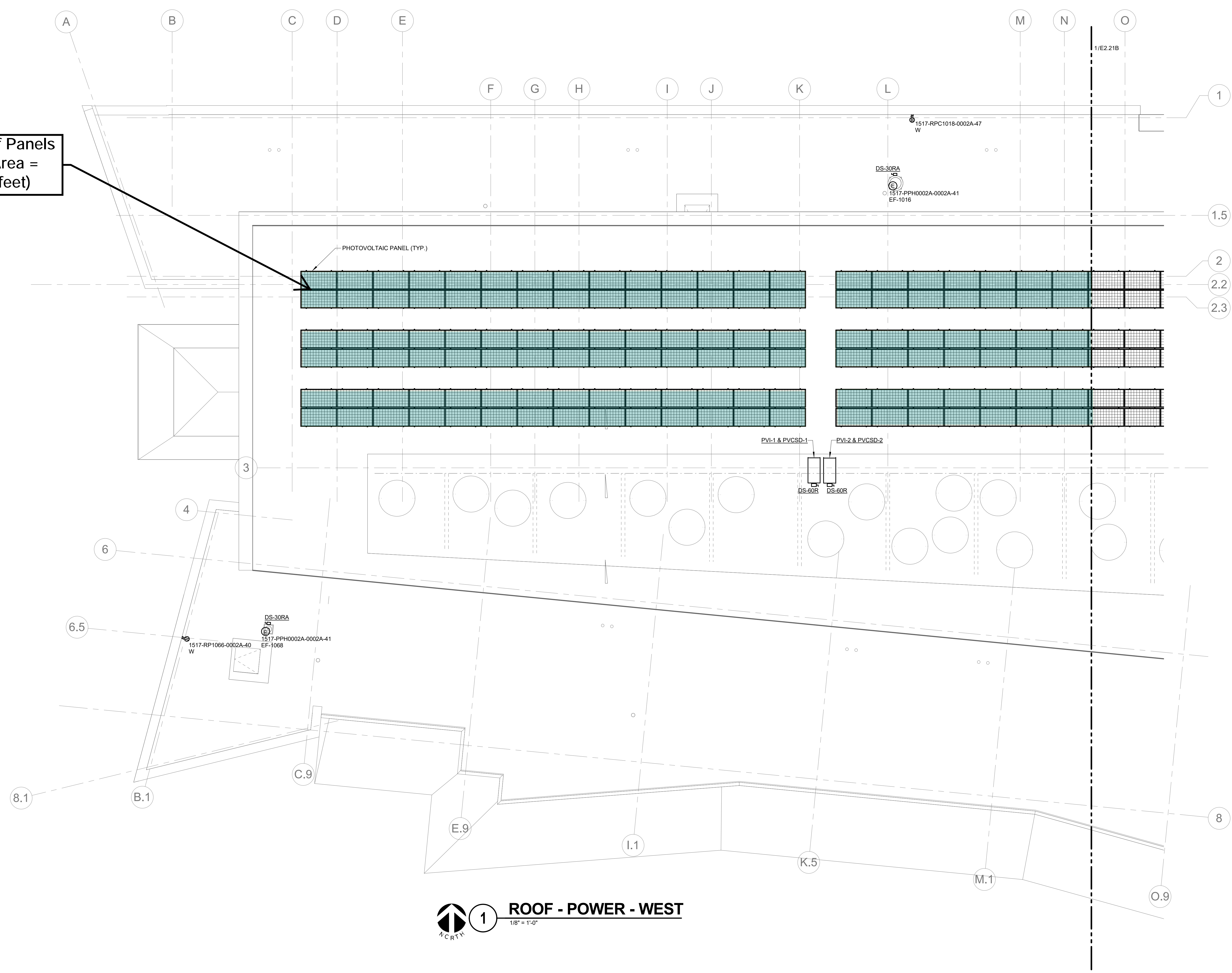
June 29, 2018 ISSUE DATE		A1.22
15110B BCJ PROJECT NUMBER		
U16015 UI PROJECT NUMBER		
1517 UI BUILDING NUMBER		
3/32" = 1'-0" SCALE		DRAWN BY
Author		
1208 South Fourth Street, Champaign, IL 61820		SHEET NUMBER

GENERAL SHEET NOTES:

- BASE BID: PHOTOVOLTAIC READY WITH TWO (2) 1" CONDUITS RUN FROM PANEL 1517-PVP1066-0002A, LOCATED IN ROOM 1066, TO LOCATION OF PVI-1 AND PVI-2 AND ONE (1) 1" CONDUIT FROM NEAREST CABLE TRAY TO THE SAME ROOFTOP LOCATION. ROUTE CONDUITS THROUGH ROOF MEMBRANE AND CAP AT ROOF.
- ALTERNATE BID #1: 58.8KW PHOTOVOLTAIC ARRAY ON UPPER ROOF, INCLUDING 168 PHOTOVOLTAIC PANELS AND (2) 30KW INVERTERS.

REVISION SCHEDULE		
No.	Description	Date

PV Solar Roof Panels - Teal (Total Area = 3,694 square feet)



1 ROOF - POWER - WEST
1/8" = 1'-0"

LEED CREDIT SS 7.2 - HEAT ISLAND EFFECT: ROOF

Ratio Architects
Associated Architects / Interiors
301 North Neil St, Ste 102
Champaign, IL 61820

Silman
Structural Engineering
32 Old Slip, 10th Floor
New York, NY 10005

IMEG Corp.
Mechanical / Electrical / Plumbing / Fire Protection
623 26th Ave
Rock Island, IL 61201

Fuhrmann Engineering, Inc.
Civil Engineering / Surveying
1401 Regency Dr East, Suite B
Savoy, IL 61874

Shen Milson & Wike LLC
Sustainability / Lighting
196 Church St, 10th Floor
New Haven, CT 06510

Atelier Ten
Sustainability / Lighting
196 Church St, 10th Floor
New Haven, CT 06510

CCS International Inc.
Cost Management
1815 S. Meyers Rd, Ste 1460
Oakbrook Terrace, IL 60181

Bohlin Cywinski Jackson
Architecture Planning Interior Design
Wilkes-Barre Pittsburgh Philadelphia Seattle San Francisco

8 West Market Street
Suite 1200
Wilkes-Barre, PA 18701
v: 570.825.8756 f: 570.825.3744
© 2016 Bohlin Cywinski Jackson

IMEG
623 26TH AVENUE
CHAMPAIGN, IL 61820
309.786.9873 FAX: 309.786.5967
www.imegcorp.com
PROJECT # 151770.00

IMEG CORP. RESERVES PROPRIETARY RIGHTS, INCLUDING COPYRIGHTS, TO THIS DRAWING AND THE DATA SHOWN THEREON. SAID DRAWING AND/OR DATA ARE THE EXCLUSIVE PROPERTY OF IMEG CORP. AND SHALL NOT BE REPRODUCED, REPRODUCED FOR ANY OTHER PROJECT WITHOUT THE EXPRESS WRITTEN APPROVAL AND PARTICIPATION OF IMEG CORP. © 2018 IMEG CORP.

REFERENCE SCALE IN INCHES
0 1 2 3

IMEG
623 26TH AVENUE
CHAMPAIGN, IL 61820
309.786.9873 FAX: 309.786.5967
www.imegcorp.com
PROJECT # 151770.00

ROOF - POWER - WEST
Issue for Construction

The University of Illinois at Urbana-Champaign
DESIGN CENTER
1208 South Fourth Street, Champaign, IL 61820

June 29, 2018	ISSUE DATE
15110B	BCJ PROJECT NUMBER
U16015	UI PROJECT NUMBER
1517	UI BUILDING NUMBER
1/8" = 1'-0"	SCALE
MATCOL	DRAWN BY

E2.21A

KEY PLAN

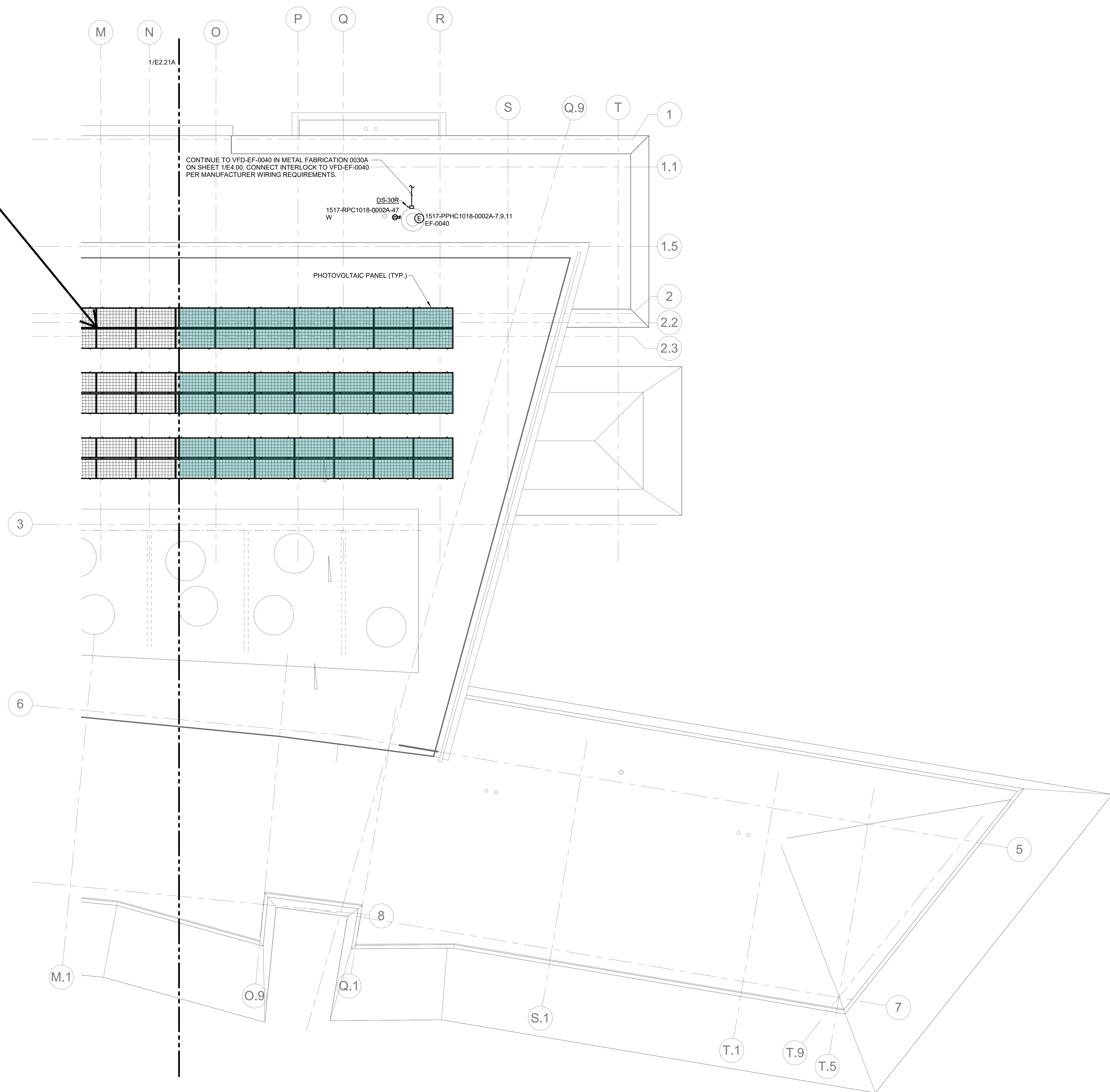
1

SHEET NUMBER

GENERAL SHEET NOTES:
 1. BASE BID: PHOTOVOLTAIC READY. ALTERNATE BID #1: 58.8KW PHOTOVOLTAIC ARRAY ON UPPER ROOF, INCLUDING 188 PHOTOVOLTAIC PANELS AND (2) 30KW INVERTERS.

REVISION SCHEDULE		
No.	Description	Date

PV Solar Roof Panels
 - Teal (Total Area = 3,694 square feet)



1 ROOF - POWER - EAST
 1/8" = 1'-0"

LEED CREDIT SS 7.2 - HEAT ISLAND EFFECT: ROOF

Ratio Architects
 Associated Architects / Interiors
 301 North Neil St, Ste 102
 Champaign, IL 61820

Silman
 Structural Engineering
 32 Old Slip, 10th Floor
 New York, NY 10005

IMEG Corp.
 Mechanical / Electrical / Plumbing / Fire Protection
 623 26th Ave
 Rock Island, IL 61201

Fuhrmann Engineering, Inc.
 Civil Engineering / Surveying
 1401 Regency Dr East, Suite B
 Savoy, IL 61874

Terry Guen Design Associates, Inc.
 Landscape Architecture
 714 South Dearborn St, Floor 5
 Chicago, IL 60605

Atelier Ten
 Sustainability / Lighting
 196 Church St, 10th Floor
 New Haven, CT 06510

Shen Milson & Wike LLC
 AV / IT / Security / Acoustics
 2 North Riverside Plaza, Ste 1460
 Chicago, IL 60606

CCS International Inc.
 Cost Management
 1815 S. Meyers Rd, Ste 1460
 Oakbrook Terrace, IL 60181

Bohlin Cywinski Jackson
 Architecture Planning Interior Design
 Wilkes-Barre Pittsburgh Philadelphia Seattle San Francisco

8 West Market Street
 Suite 1200
 Wilkes-Barre, PA 18701
 v: 570.825.8756 f: 570.825.3744
 © 2016 Bohlin Cywinski Jackson

General Notes

IMEG
 623 26TH AVENUE
 CHAMPAIGN, IL 61820
 309.786.0873 FAX: 309.786.5967
 WWW.IMEG-CORP.COM
 PROJECT # 151770.00

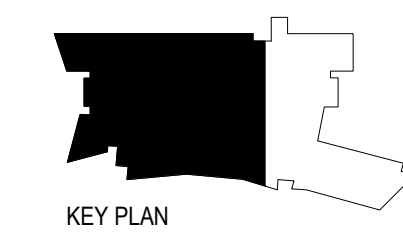
IMEG CORP. RESERVES PROPRIETARY RIGHTS, INCLUDING COPYRIGHTS, TO THIS DRAWING AND THE DATA SHOWN THEREON. SAID DRAWING AND/OR DATA ARE THE EXCLUSIVE PROPERTY OF IMEG CORP. AND SHALL NOT BE REPRODUCED, REPRODUCED FOR ANY OTHER PROJECT WITHOUT THE EXPRESS WRITTEN APPROVAL AND PARTICIPATION OF IMEG CORP. © 2018 IMEG CORP.

REFERENCE SCALE IN INCHES
 0 1 2 3

ROOF - POWER - EAST
 Issue for Construction

The University of Illinois at Urbana-Champaign
DESIGN CENTER
 1208 South Fourth Street, Champaign, IL 61820

15110B	15170.00	1517	June 29, 2018
BCJ PROJECT NUMBER	UI PROJECT NUMBER	UI BUILDING NUMBER	ISSUE DATE
U16015	1517	1517	1/8" = 1'-0"
SCALE	MATCOOL	SCALE	SCALE
U16015	1517	1517	1/8" = 1'-0"
UI PROJECT NUMBER	UI BUILDING NUMBER	UI PROJECT NUMBER	SCALE
1517	1517	1517	1/8" = 1'-0"
SCALE	MATCOOL	SCALE	SCALE



E2.21B
 SHEET NUMBER