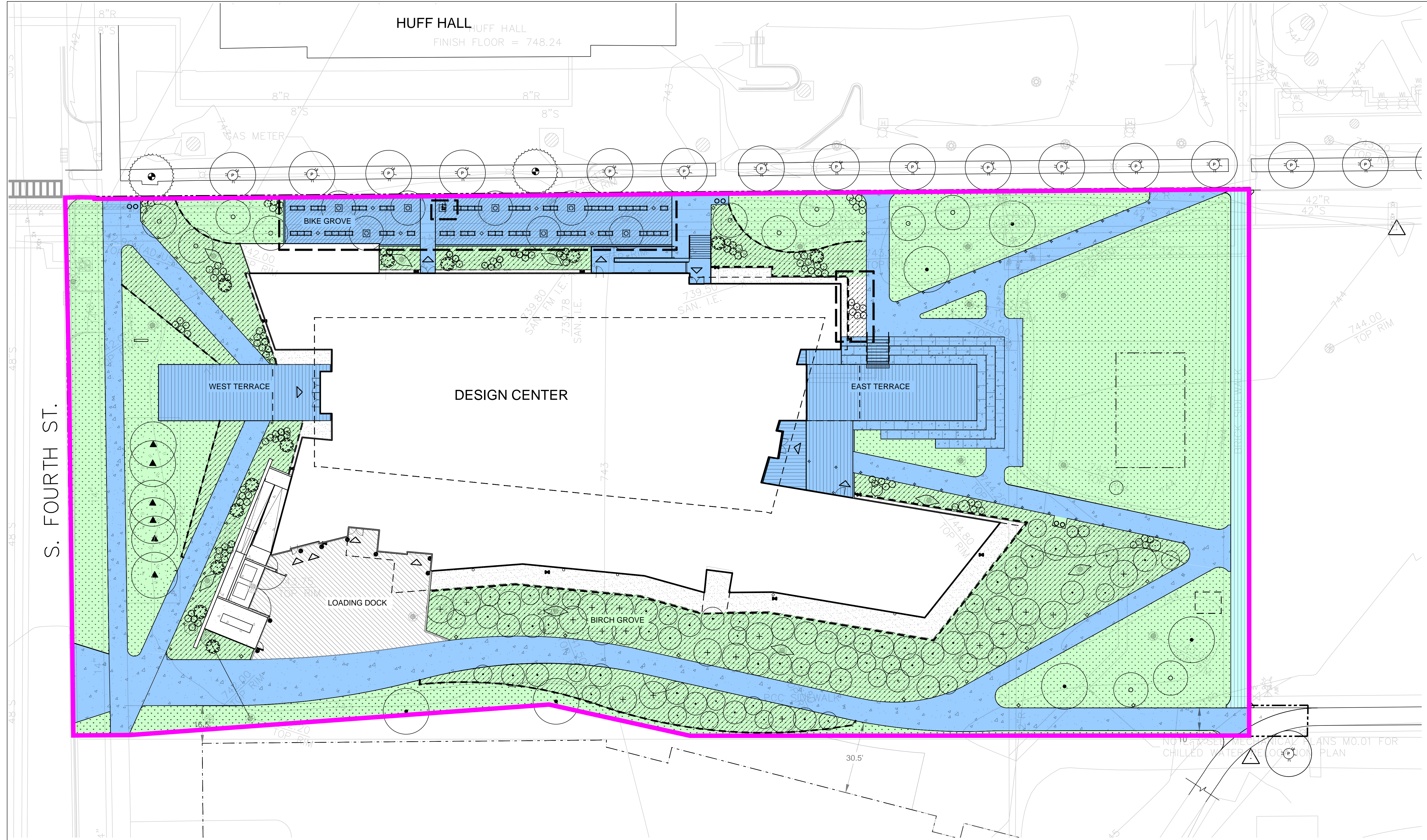
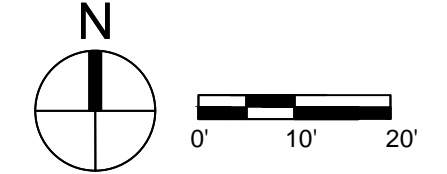


REVISION SCHEDULE		
No.	Description	Date



1 LANDSCAPE PLAN

SCALE: 1"=20'



- LEED BOUNDARY: 119,438 SF
- LANDSCAPE PLANTING AREA
VEGETATED OPEN-SPACE : 48,490 SF
- PEDESTRIAN ORIENTED HARDSCAPE : 31,045 SF

OPEN SPACE REQUIREMENTS :

1. PROVIDE VEGETATED OPEN SPACE AREA ADJACENT TO THE BUILDING THAT IS EQUAL TO THE BUILDING FOOTPRINT.

BUILDING FOOTPRINT : 31,643 SF

VEGETATED OPEN SPACE AND PEDESTRIAN ORIENTED HARDSCAPE COMBINED IS : 79,535 SF AND IS 66.6% OF THE TOTAL SITE AREA.
2. A MINIMUM OF 25% OF THE OPEN SPACE COUNTED MUST BE VEGETATED AND MUST EQUAL OR EXCEED 20,636 SF.

VEGETATED OPEN SPACE : 48,490 SF, 59% OF THE TOTAL SITE OPEN SPACE.

Ratio Architects
Associated Architects / Interiors
301 North Neil St, Ste 102
Champaign, IL 61820

Silman
Structural Engineering
32 Old Slip, 10th Floor
New York, NY 10005

IMEG Corp.
Mechanical / Electrical / Plumbing / Fire Protection
623 26th Ave
Rock Island, IL 61201

Fuhrmann Engineering, Inc.
Civil Engineering / Surveying
1401 Regency Dr East, Suite B
Savoy, IL 61874

Shen Milsom & Wilo LLC
AV / IT / Security / Acoustics
2 North Riverside Plaza, Ste 1460
Chicago, IL 60606

CS International Inc.
Cost Management
1815 S. Meyers Rd, Ste 1460
Oakbrook Terrace, IL 60181

Bohlin Cywinski Jackson
Architecture Planning Interior Design
Wilkes-Barre Pittsburgh Philadelphia Seattle San Francisco

8 West Market Street
Suite 1200
Wilkes-Barre, PA 18701
v: 570.825.8756 f: 570.825.3744

© 2016 Bohlin Cywinski Jackson

General Notes

**LEED CREDIT SSc5.2
MAXIMIZE OPEN SPACE**

The University of Illinois at Urbana-Champaign
DESIGN CENTER
1208 South Fourth Street, Champaign, IL 61820

June 29, 2018 ISSUE DATE		L1.10
15110B BCJ PROJECT NUMBER		
U16015 UI PROJECT NUMBER	1" = 20' SCALE	
1517 UI BUILDING NUMBER	TGDA DRAWN BY	