



Breaking Through Silos - Fostering a Sustainable Campus

Ms. Morgan Johnston

Sustainability Coordinator

University of Illinois at Urbana-Champaign

Mr. Carl Wegel

Director of Operations, Maintenance & Alterations

University of Illinois at Urbana-Champaign

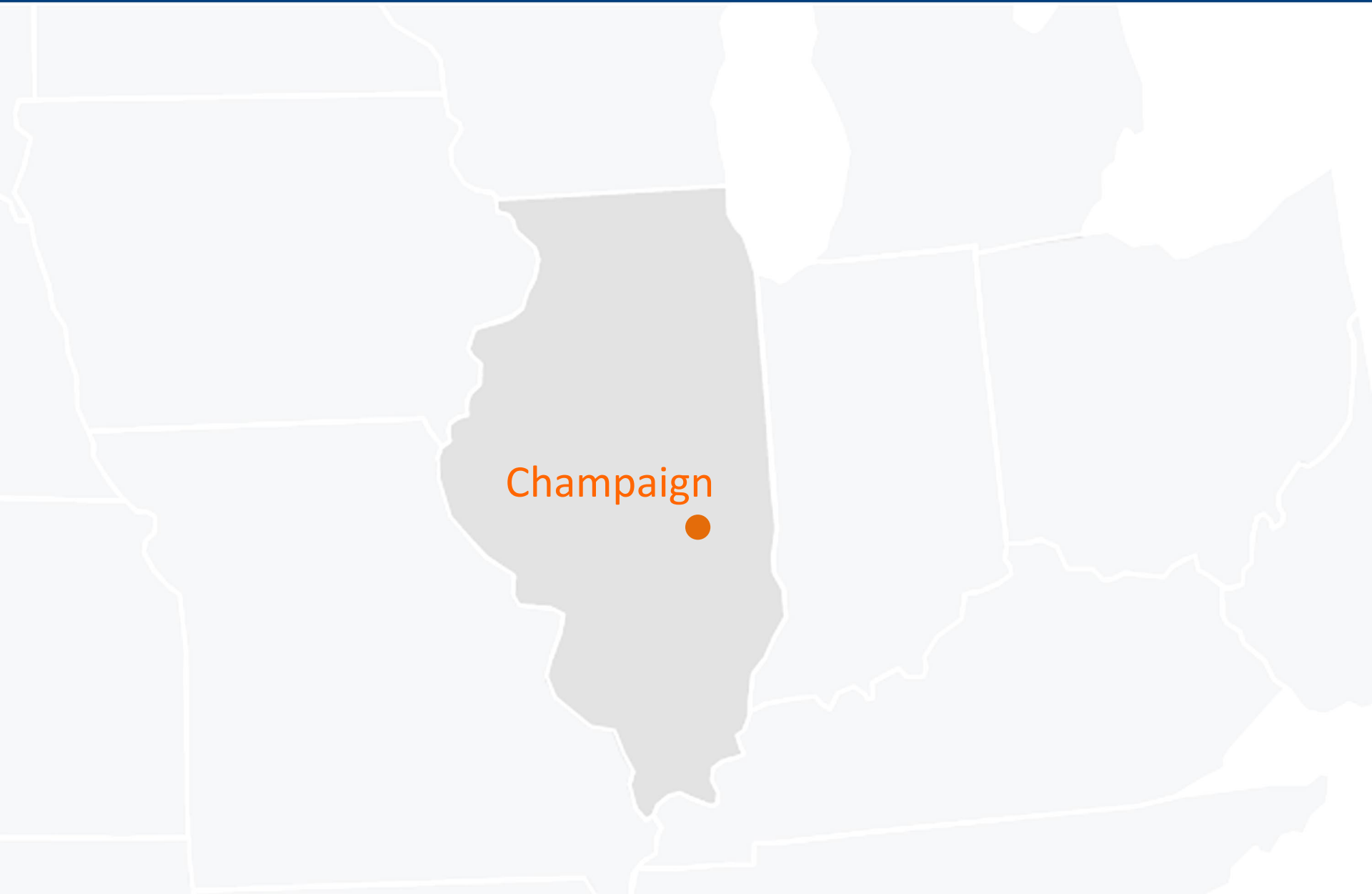


ILLINOIS

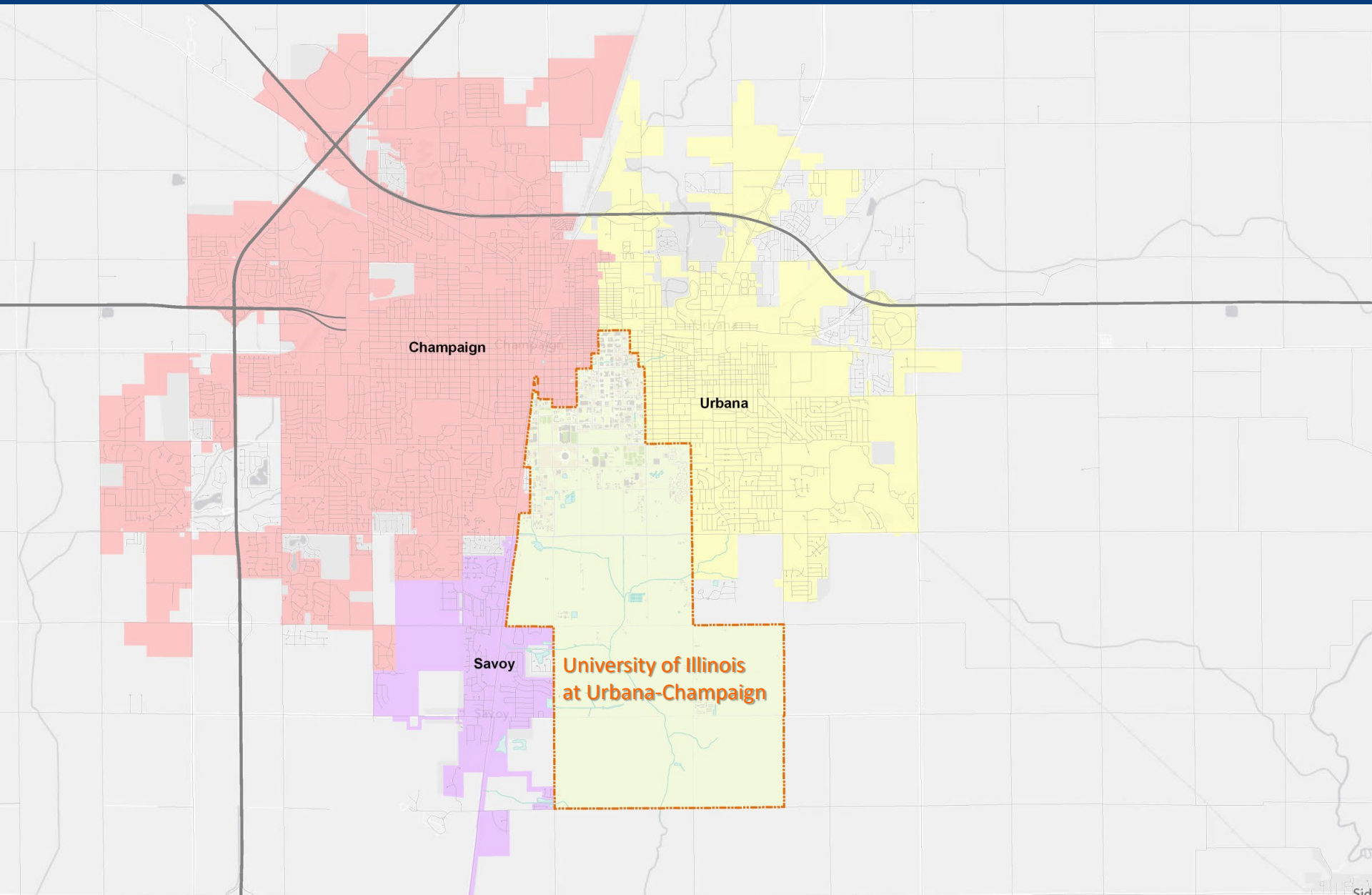
SUSTAINABLE SINCE 1867



Centrally Located



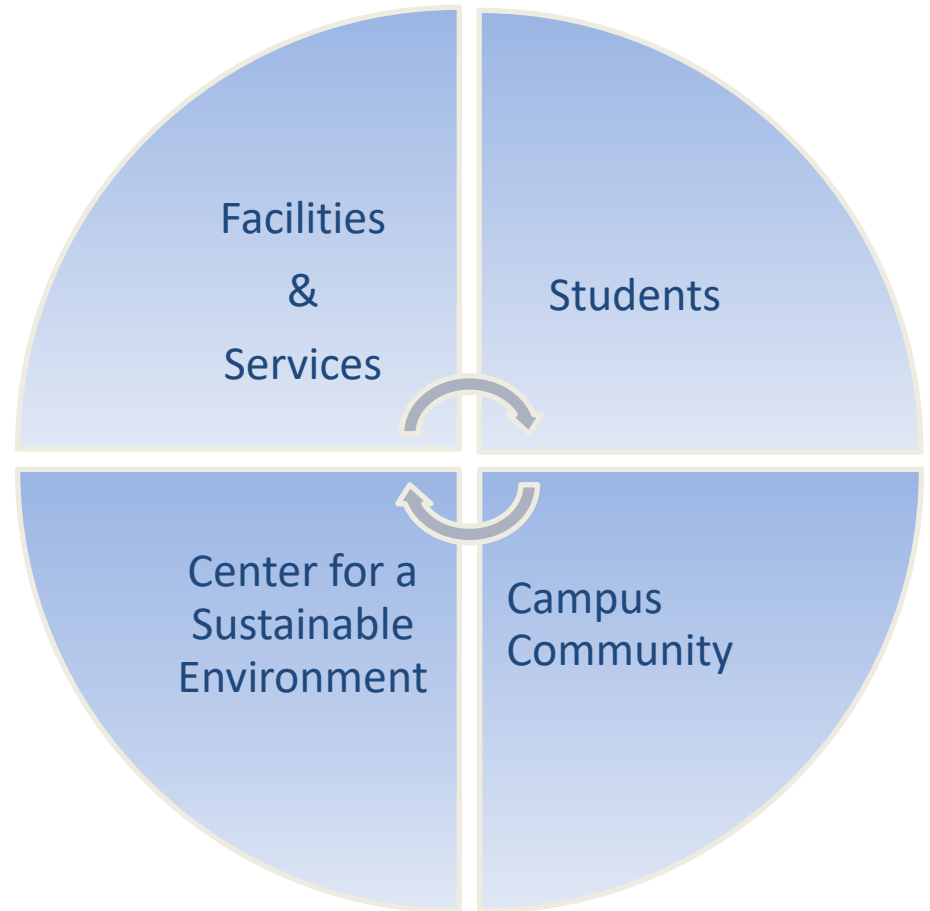
Campus Community



Learning Outcomes

- 1. ANALYZING CAMPUS NEEDS AND PRIORITIZING SUSTAINABILITY INITIATIVES***
- 2. IDENTIFYING FUNDING SOURCES AND THE BEST METHODS OF UTILIZATION FOR SUSTAINABLE PROJECTS***
- 3. CHALLENGES OF IMPLEMENTING A COMPREHENSIVE SUSTAINABILITY PROGRAM***





1. ANALYZING CAMPUS NEEDS AND PRIORITIZING SUSTAINABILITY INITIATIVES



Commitments Signed

American College & University Presidents' Climate Commitment



AMERICAN COLLEGE & UNIVERSITY
PRESIDENTS' CLIMATE COMMITMENT

February, 2008

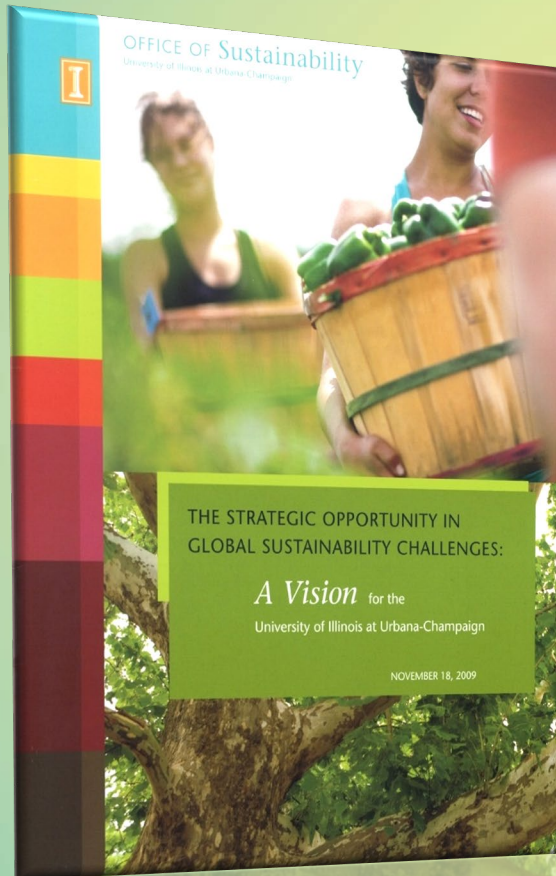


PRESIDENTS' CLIMATE COMMITMENT
AMERICAN COLLEGE & UNIVERSITY



Commitments Signed

The Strategic Opportunity in Global Sustainability Challenges

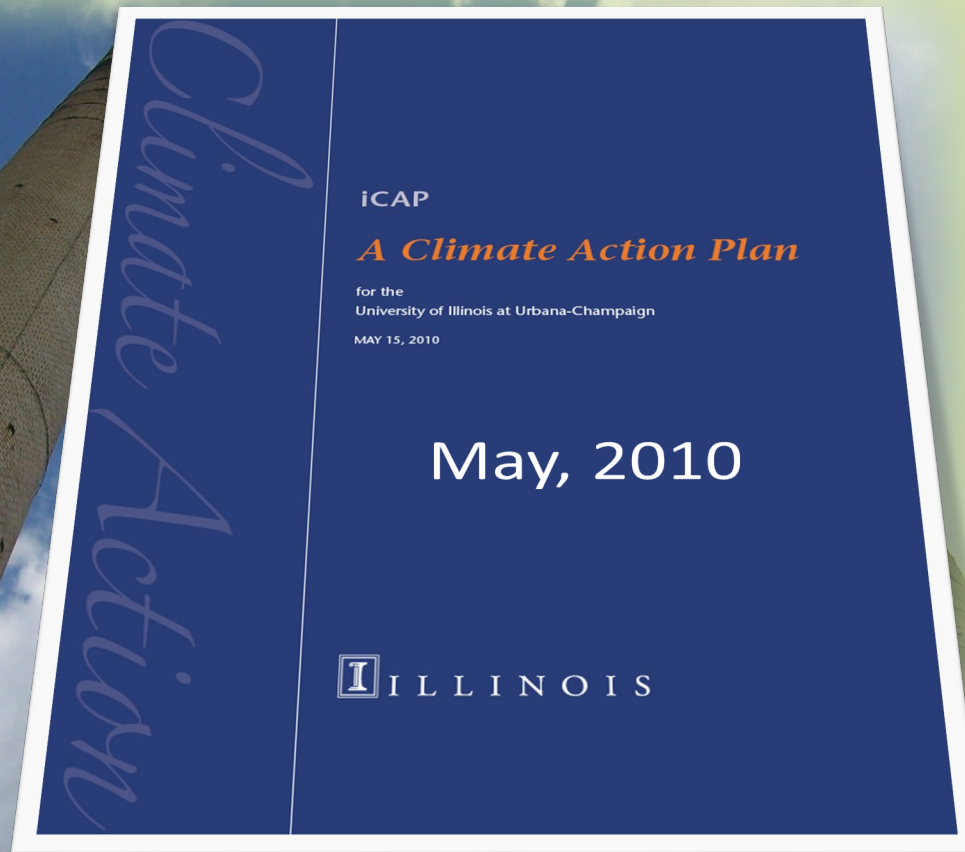


November, 2009



Commitments Signed

Illinois Climate Action Plan (iCAP)





Facilities & Services

Campus Community

Center for a
Sustainable Environment

Student Groups



http://www.youtube.com/watch?feature=player_embedded&v=TyPFr79I7xM



10 Themes “Goals”





Home

Goals

Projects

Suggest a Project

Map

Home

Welcome



The Illinois Climate Action Plan (iCAP) outlines a path for the University of Illinois at Urbana-Champaign to achieve carbon neutrality by the year 2050. The Campus [committed to this ambitious goal](#) when it signed the [American College and University Presidents' Climate Commitment \(ACUPCC\)](#) on February 22, 2008.

The University of Illinois is in a prime position to solve society's most challenging needs, including the health, social, economic, and ecological impacts associated with climate change. With high-caliber researchers and experts in diverse fields across campus, the University seeks to implement innovative solutions to these pressing issues, and become a leader in sustainability efforts locally, nationally, and globally.

Since developing the 2010 iCAP, the University of Illinois at Urbana-Champaign has developed hundreds of projects to tackle the broad range of sustainability issues that face our campus and our world. This site is a repository for summary information about each iCAP project, both to share the information publicly and to assist in collecting information for reporting purposes. Each project page includes a project description, contact names, funding details, location map(s), metrics and targets to measure success, current status of the project, and regular updates as projects are discussed, approved, and implemented. If you would like to recommend a new project or are aware of an existing project that is not listed on this site, please use the "Suggest a Project" tab to let us know.

Read the full [2010 Illinois Climate Action Plan](#).

Latest Updates

Solar Farm

[SSC formal proposal submitted via email](#) *10/19/2012*

Due to the Board of Trustees meeting schedule, the SSC have agreed to do a straw-poll about the funding of the Solar Farm project at their upcoming meeting on Oct.

Cycling Savvy Courses

[Free Cycling Savvy Course to be Offered October 23, 2012](#)

10/15/2012

On October 23, as part of the 2012 Sustainability Week, Champaign County Bikes and the University of Illinois will offer a FREE Cycling Savvy Course.

Zero-Waste Policy

[Team status meeting](#) *10/9/2012*

Marcus Ricci, Stephanie Lage, Brian Deal, and Morgan Johnston met to review the status of this report. Marcus has collected a lot of data about how waste is handled on campus, and he has started to draft a summary.

[View more updates »](#)





Home

Goals

Projects

Suggest a Project

Map

Home » Map

Theme Filter

Select the theme(s) you'd like to filter by:

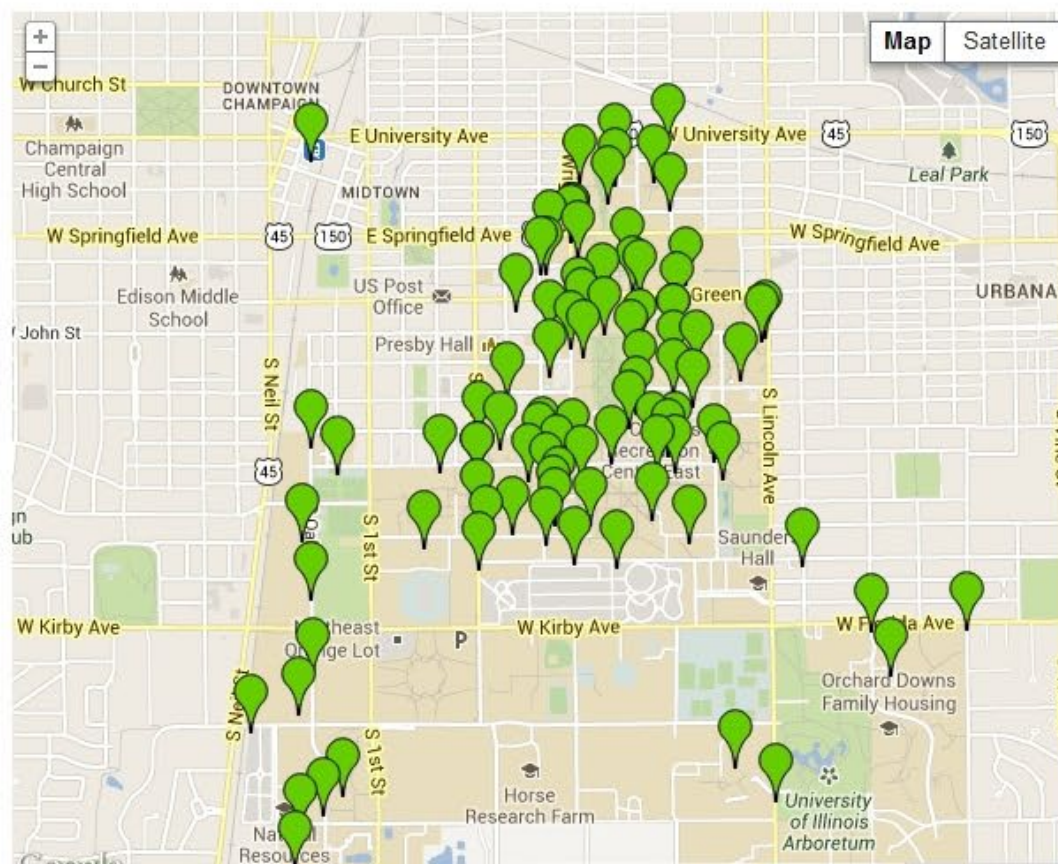
- ☐  Education
- ☐  Energy
- ☐  Funding
- ☐  Land & Space
- ☐  Outreach
- ☐  Procurement & Waste
- ☐  Reporting Progress
- ☐  Research
- ☐  Transportation
- ☐  Water

Submit

Map of Project Locations

This map shows all the locations where sustainability projects are located. Click on a location to see a listing of projects occurring there.

Please zoom out to view off-campus projects.





Home

Goals

Projects

Suggest a Project

Map

Home » Theme: Transportation » Reduce Emissions » Reduce VMT » Active Transportation » Bicycles » Evaluation » Campus Bike Plan

Campus Bike Plan

2013 Campus Bicycle Network Master Plan for the University of Illinois at Urbana-Champaign

Description

Transportation Demand Management (TDM) in Facilities & Services is seeking input on the updated **2013 Campus Bike Plan**, a master plan to direct our efforts for future bicycle infrastructure improvements and program development.

The draft **2013 Campus Bike Plan** will be available for public input during a four-week period, through March 31, and members of the campus community are encouraged to review the plan and submit their comments and feedback. **Feedback can be submitted through the online Campus Bicycle Feedback Form.** The Campus Bike Plan will be finalized for approval during Summer 2013.

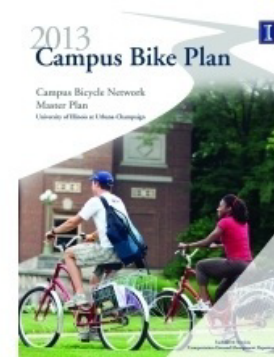
- [Download Campus Bike Plan \(PDF\)](#) (updated May 2013)
- [Submit feedback through the Campus Bicycle Feedback Form](#)

Background

The benefits of a bicycle friendly campus are many. As a mode of transportation, bicycles provide solutions in the areas of safety, sustainability, cost savings, mobility, health and wellbeing. The University of Illinois at Urbana-Champaign was one of the first campuses in the nation to adopt a bikeway network when the first bike paths were constructed here in the 1950s. Since that time, funding cutbacks have led to degraded and disconnected pathways, outdated and insufficient bicycle parking, and limited support for bicycle services and programs. Despite these setbacks, bicycle ridership has grown at the University of Illinois in the last decade, and is expected to continue to grow in the future, creating a great need for reemphasis on engineering, education, enforcement, encouragement, and evaluation for bicycle-friendly improvements.

The 2013 Campus Bike Plan outlines the various ways in which the University should improve for bicycles in the coming years. The goals of the Campus Bike Plan are five-fold:

1. Increase safety for all campus users, including pedestrians, bicyclists, transit riders, and motorists



Project History

Revised Draft Campus Bike Plan Available

5/17/2013 The Campus Bike Plan is still under revision, but a **newly updated version of the draft** is now publicly available.

Draft 2013 Campus Bike Plan Released for public comment

3/4/2013 The draft **2013 Campus Bike Plan** is now available for public input.

[View all project progress »](#)



Sustainability Projects

Energy Dashboards
Sustainability Fellows
Native Plantings
LEED® Facilities



Campus Bike Plan
Lighting Retrofits
Biomass Testing
Retrocommissioning



Waste Transfer Station

Battery and Bulb Recycling

Custodial Technologies

No Mow Zones

Integrated Pest Management

Paperless Environment



Sustainability Practices

2. IDENTIFYING FUNDING SOURCES AND THE BEST METHODS OF UTILIZATION FOR SUSTAINABLE PROJECTS



Wind Turbine



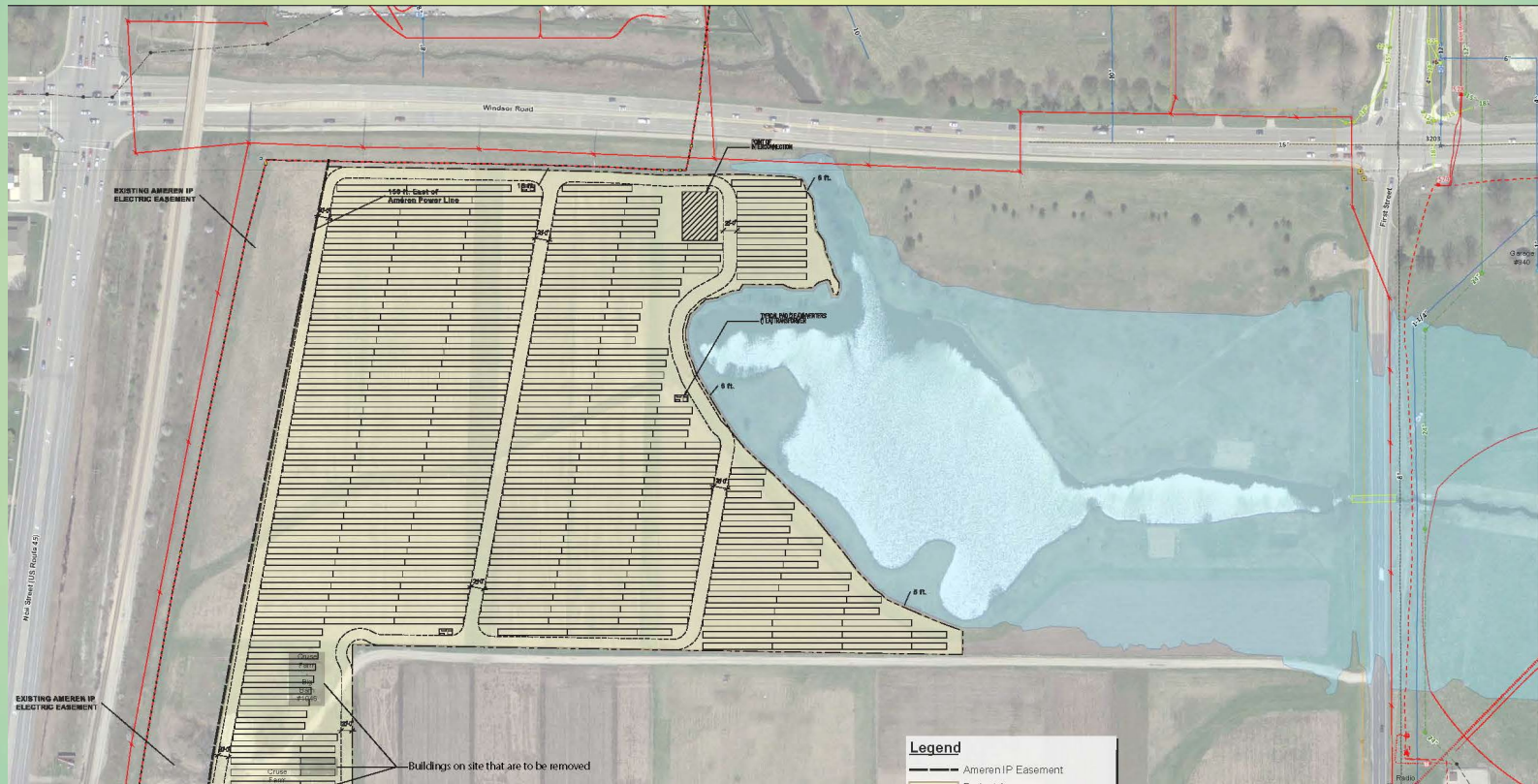
Wind Turbine

\$5.2 M Budget

Illinois Clean Energy Community Foundation	\$2M
Utilities & Energy Services	\$1M
Student Cleaner Energy Fee	\$640K
Office of the Chancellor	\$500K
Office of the President	\$640K
Shortfall	(\$420K)



Solar Farm





Solar Farm

\$5.3 M Budget

Utilities & Energy Services

\$4.25M

Student Sustainability Committee

\$1.05M

The total cost is actually projected to be over \$15M, but there will be a reduction in the cost of electricity purchased from conventional sources.



Solar Farm vs. Wind Turbine

- \$5.3 Million, subsidy
- 5.88 MWp
- 2.1% Electricity for Campus
- Power Purchase Agreement
- \$5.2 Million, installation
- 1.65 MWp
- 0.8% Electricity for Campus
- Design / Build



Funding Sources





3. CHALLENGES OF IMPLEMENTING A COMPREHENSIVE SUSTAINABILITY PROGRAM



The Challenges

1. **Charting the Path**
2. **Changing Attitudes**
3. **Building Consensus**
4. **Publicizing Successes**
5. **So Much to Do, So Much to Do**

Big Projects – BIGGER ISSUES

- Funding Challenges
- Public/Media Opinion
- Overall “Fit”





QUESTIONS?

Fostering a Sustainable Campus Culture

Making the Connection, Why Customer Service Is Essential

Presenters: **Dee Dee Caneva & Steve Breitwieser**

Room: Greenway J

Time: Friday, August 2; 4:30-5:30 p.m.

Illinois Energy Success Story

Presenter: **Kent Reifsteck**

Room: Greenway I

Time: Saturday, August 3; 2:00-3:00 p.m.

CoPs and Robbers: Musings of An Old Outlaw

Presenter: **Jack Dempsey**

Room: Greenway D

Time: Saturday, August 3; 3:15-4:15 p.m.