



Campus Bicycle Network Master Plan

status update

September 18, 2012

BPAC presentation





Multi-Modal Transportation Study

- Recommendation 3.18: Commission a **comprehensive campus bicycle plan** to plan for upgrading existing facilities and developing new facilities.
- Recommendation 3.19: Implement **bike lanes** on campus streets as part of “complete streets” program. Bike paths should supplement street system in areas inaccessible by street and in areas used for recreational purposes.
- Recommendation 3.22: Implement a comprehensive **bicycle education** and promotion program.
- Recommendation 3.23: Provide other **amenities** to accommodate existing bicyclists and attract new ones.

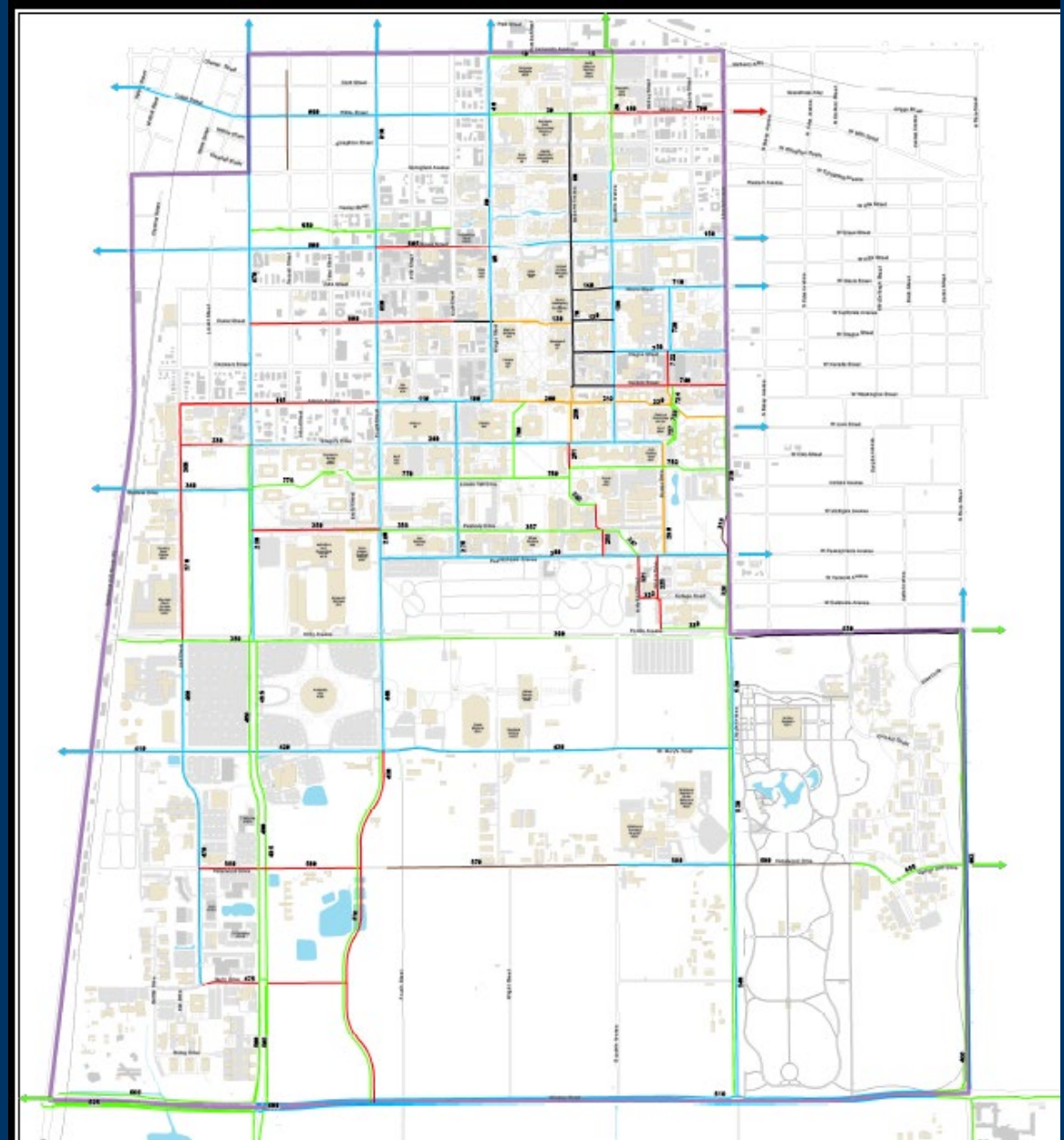


Proposed Bicycle Facilities

- Bike Lanes – on vehicular streets, a striped lane intended for only bicycle use
- Bike Routes – a street noted for higher bicycle volumes, and providing connections for bicycles
- Shared Use Paths – separate from a street, a path intended to be shared by pedestrians and bicycles
- Off-Road Bike Paths – separate from a street or sidewalk, a path intended for only bicycle use

Plan Overview

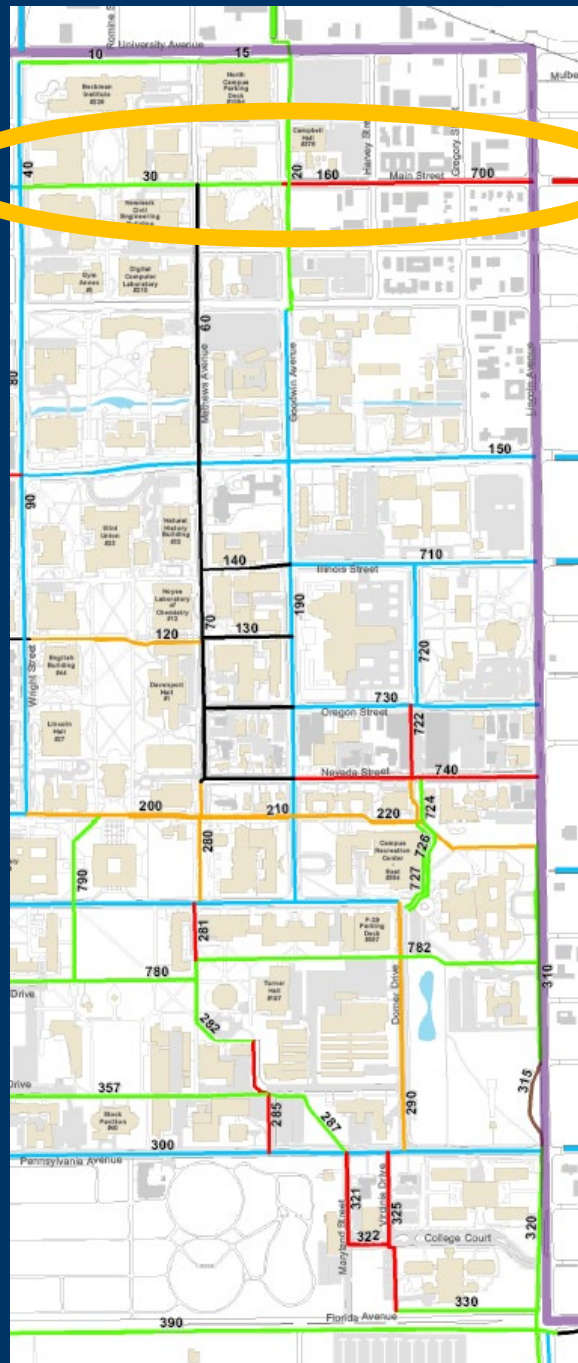
- Bike lanes where they can fit
- Reduced number of off-road bike paths
- Change remaining bi-directional side paths to shared use paths
- Consistent markings and signage
- There are remaining specific facility issues.

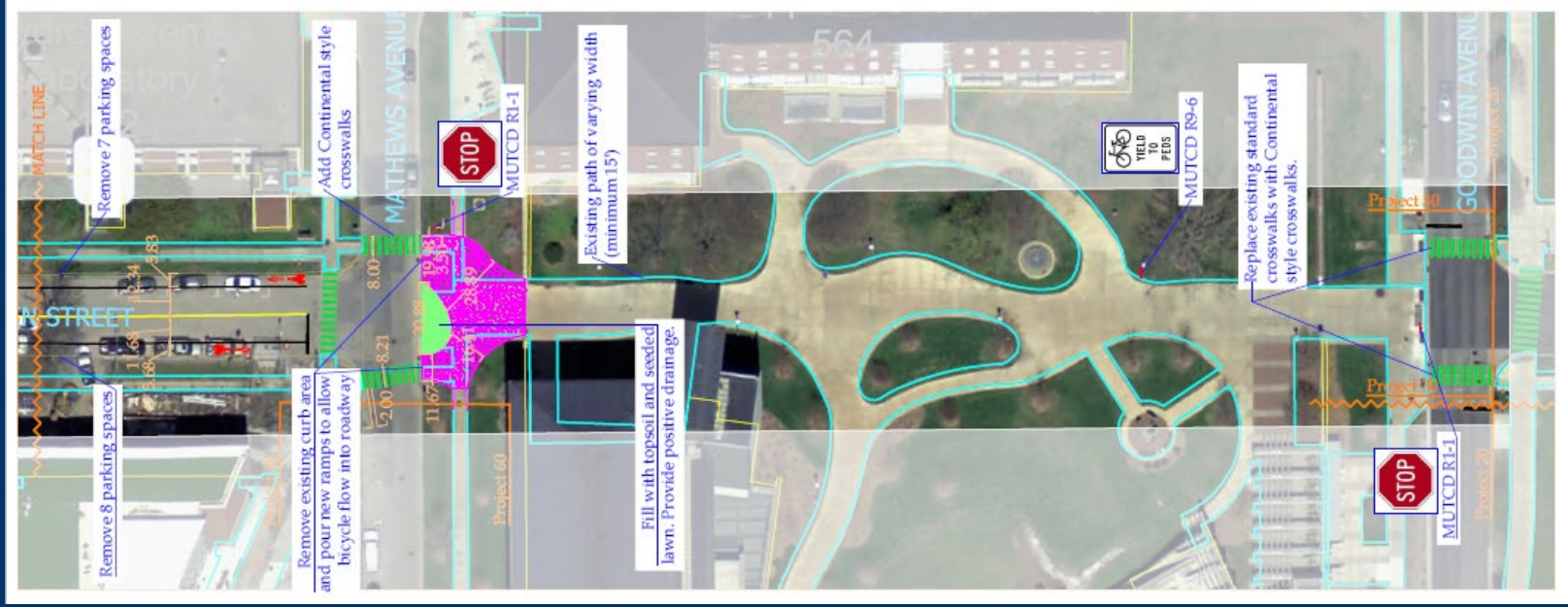
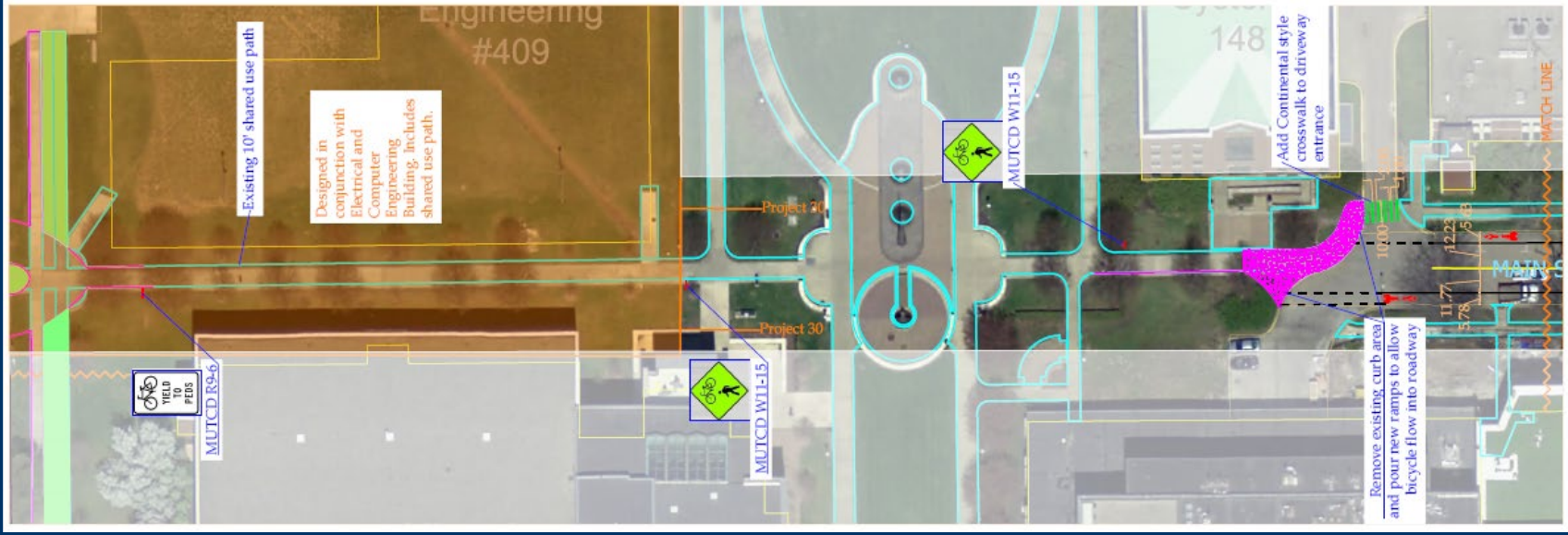


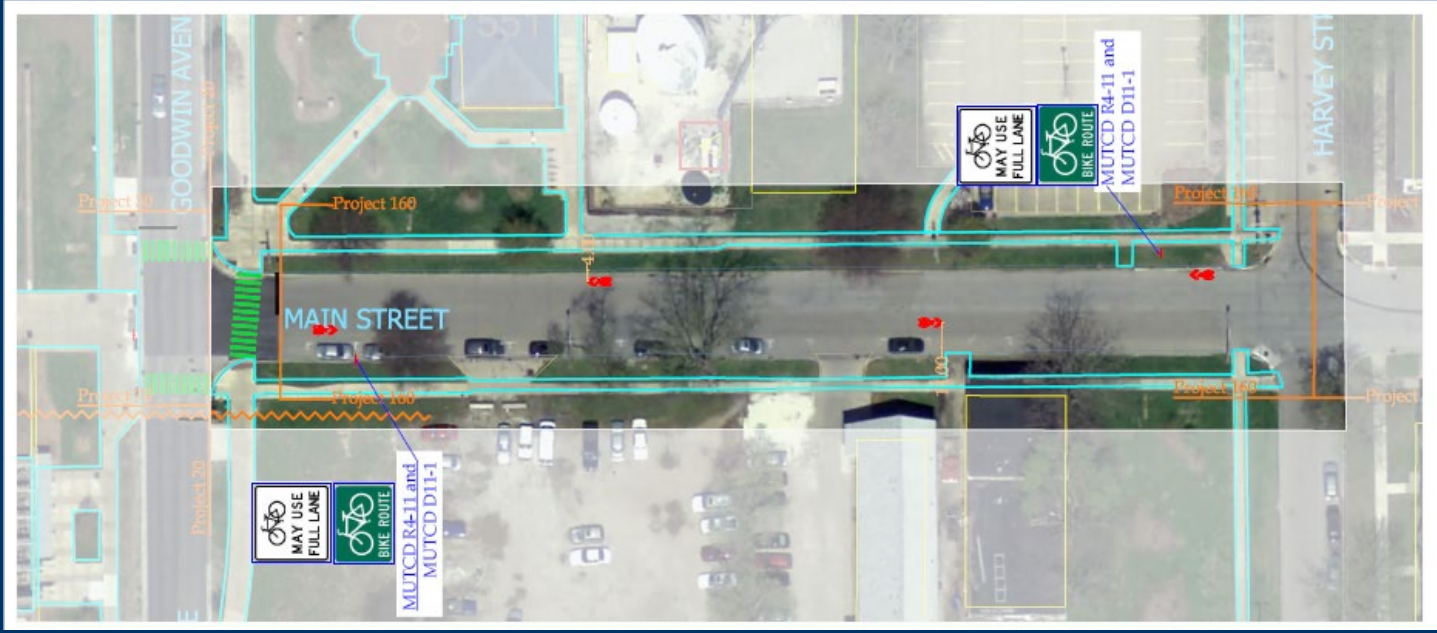


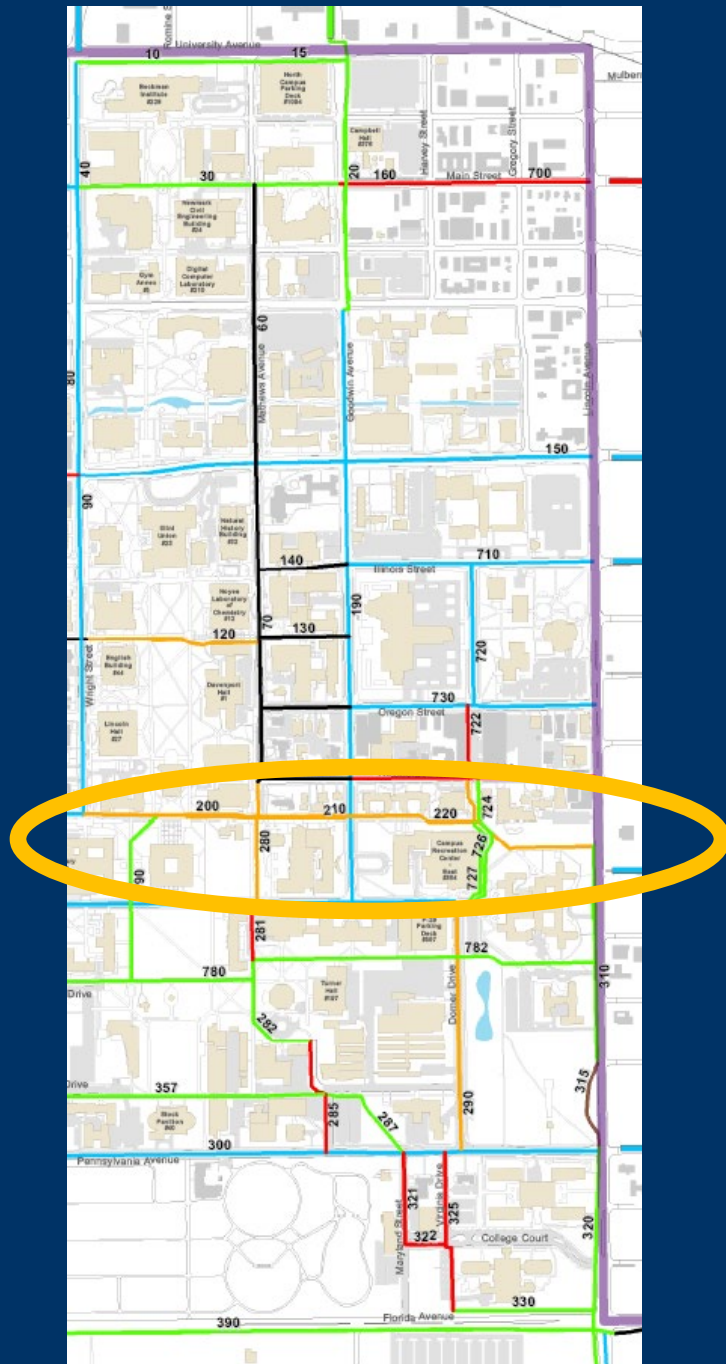
Next Steps

- Campus Bicycle Network Master Plan – doc to be completed by January 15, 2013.
- LinC class to develop recommendations chapter and table
- Amelia and Morgan to draft document for Campus approval, and share with CATS bike plan subcommittee for review.
- University District Bike Plan to be considered separately

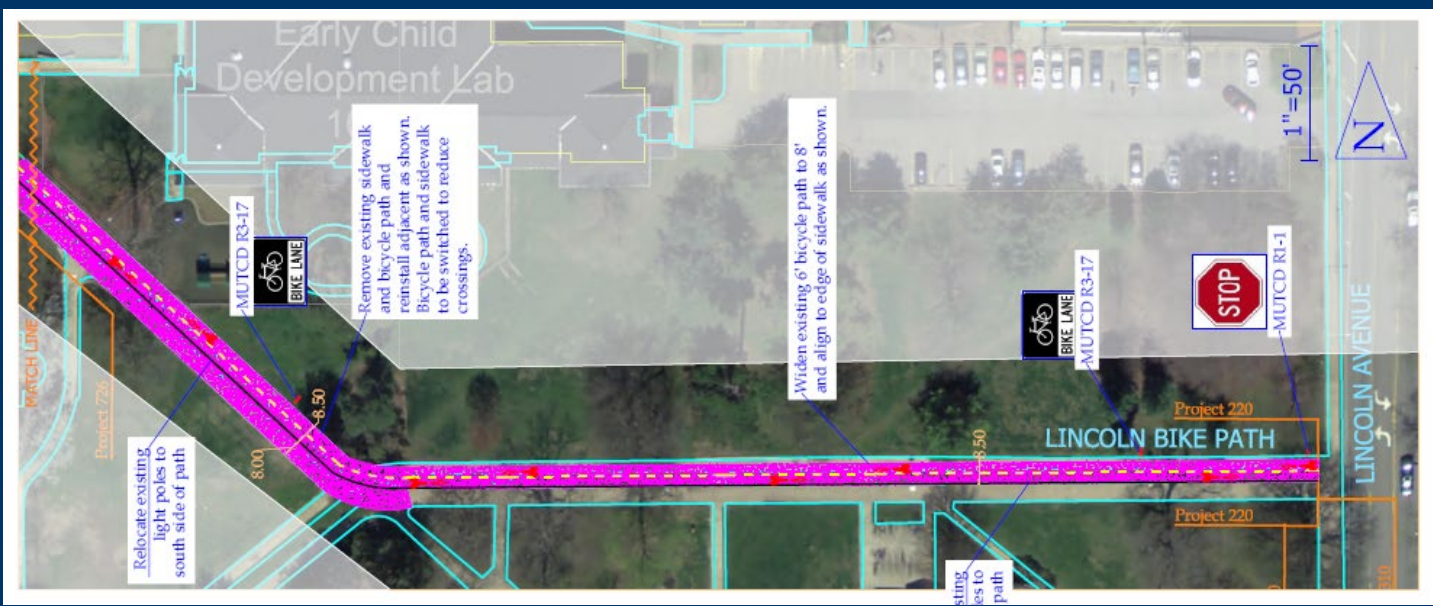
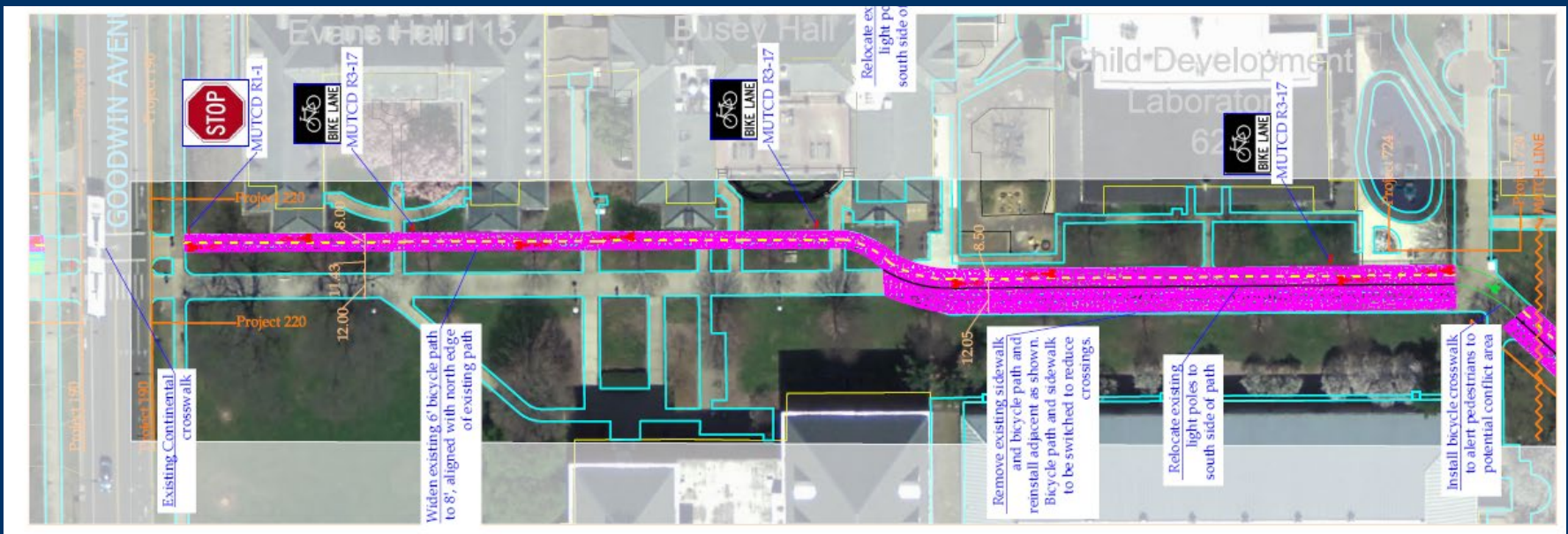


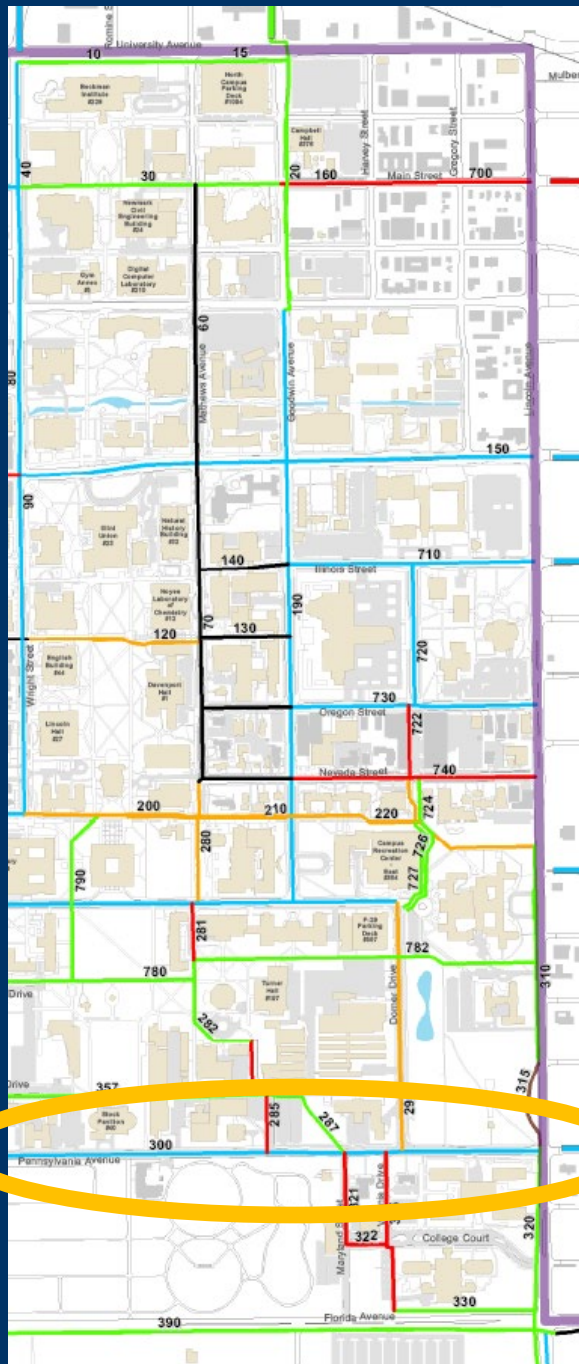


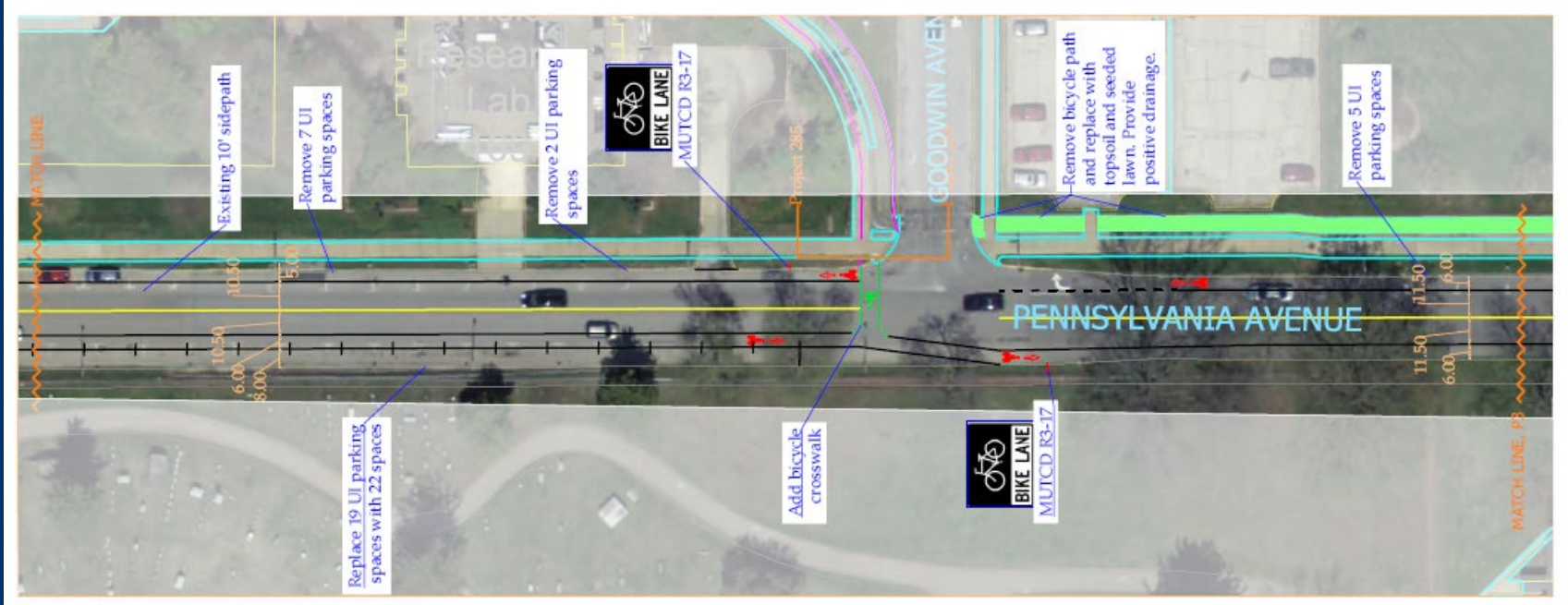
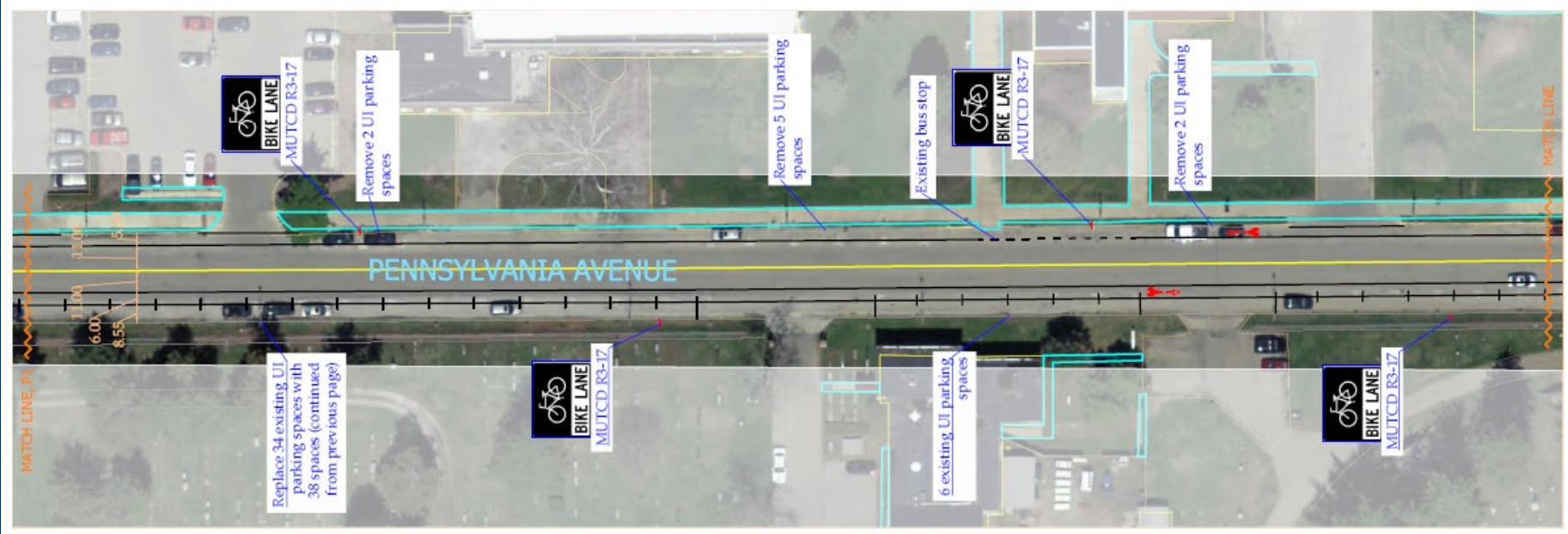














Thanks! Questions?

- To better accommodate pedestrian, bicycle, transit, and vehicle movements in a more user-friendly environment.
- – *CATS Mission Statement*

