

SPREAD THE WORD: Use the Bin!



Morgan White

Associate Director of Facilities & Services,
Sustainability
University of Illinois at Urbana-Champaign
mbwhite@Illinois.edu
August 15, 2018





Carbon Commitment

Signed by Chancellor
Herman in 2008

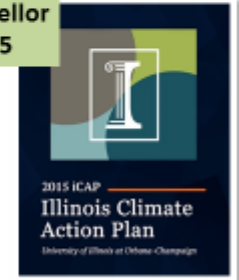


AMERICAN COLLEGE & UNIVERSITY
PRESIDENTS' CLIMATE COMMITMENT

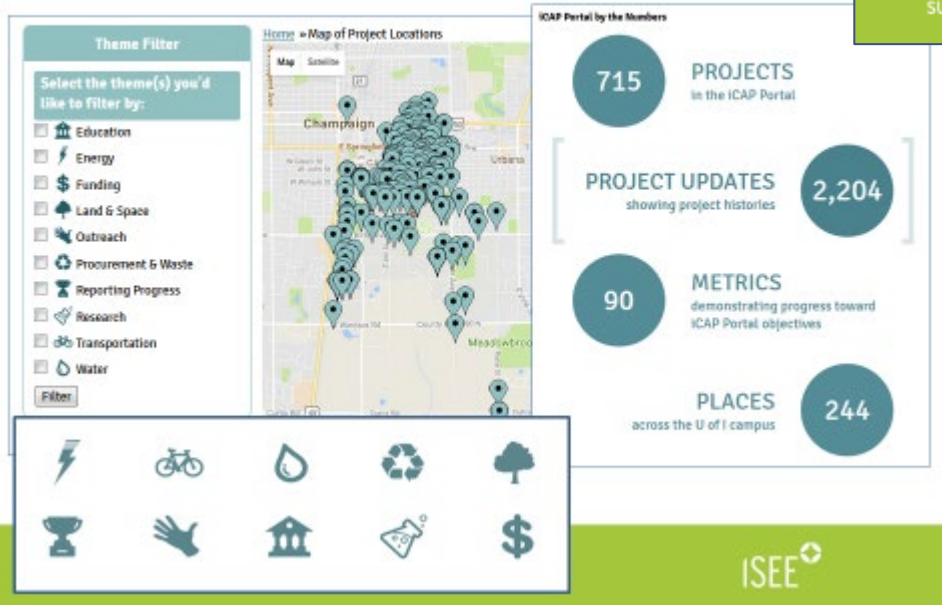
2015 iCAP objectives
are in progress

2015 iCAP approved
by Interim Chancellor
Wilson in 2015

2010 iCAP approved
by Interim Chancellor
Easter in 2010



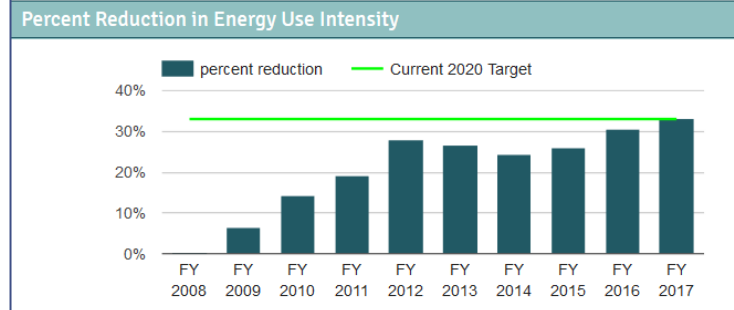
KEEPING TRACK ON THE ICAP PORTAL



SUSTAINABILITY.ILLINOIS.EDU



First decade → focused on energy conservation



Why YOU?

- **YOU** are a constant in the recycling equation.
- **YOU** are in a unique position.
- **YOU** can be the difference.



Objectives:

- We're asking for **YOUR** help to increase campus recycling rates



Objectives:

- We want to give **YOU** the info you need to answer questions about recycling.



Objectives:

- We want to explain the **IMPORTANCE** of using the bins to reach our goooooaaaaalllll...

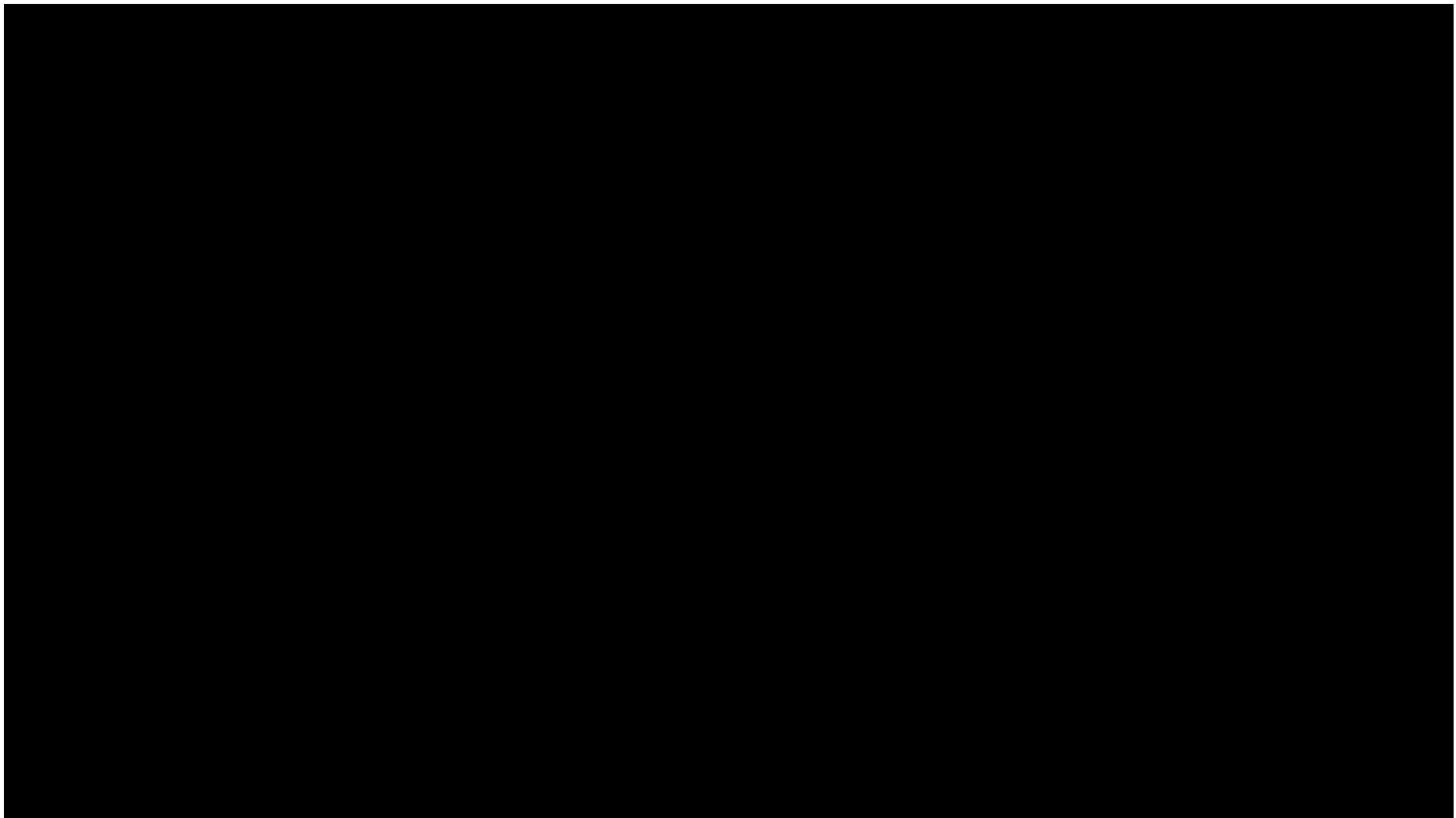


Objectives:

- **THIS** goal....

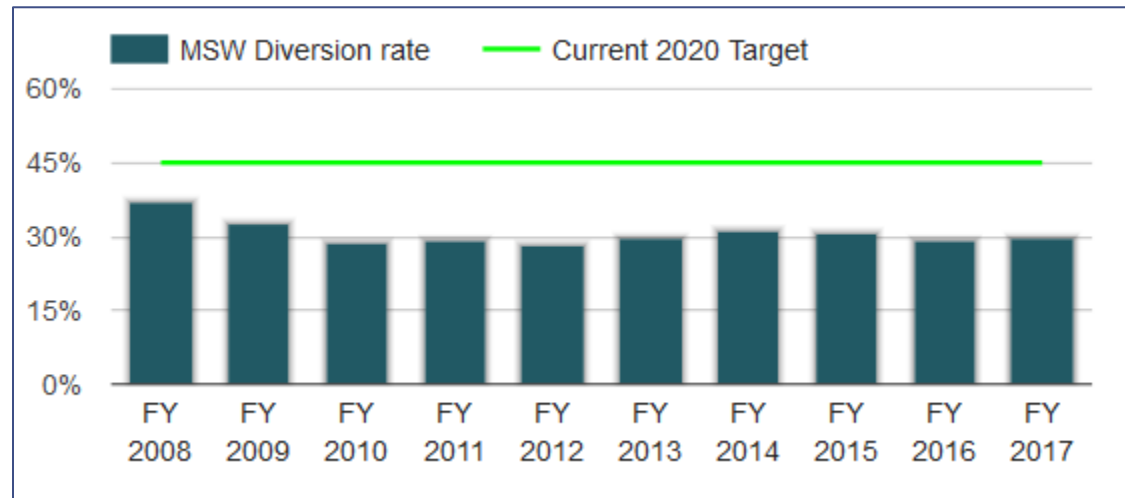


**DIVERT
45%
OF TRASH CAN
WASTE BY
2020**



Our Diversion Rate has Stagnated...

- We are stuck at 30%.



Why We Need YOUR Help:

- Our recycling system is **COMPLEX**.

Recycling and Campus are:

Single

It's Complicated

Why We Need YOUR Help:

- We have adopted **NEW** tactics and need to get the word out.



Why We Need YOUR Help:

- **OLD TACTIC**
Put **ANYTHING** in the trash; it
will get sorted later



Why We Need YOUR Help:

- **NEW TACTIC**
Put recyclables in **SEPARATE** bins to increase effectiveness



Why We Need YOUR Help:

Student and staff actions will make or break this effort.

YOU are in daily contact with them!

YOU can provide them with the new information.

We can take personal responsibility for our waste.

Recycling is **IMPORTANT** to our Campus



The campus values recycling—our commitments include:

- Signing the Climate Leadership Commitments-recycling helps reduce our carbon footprint

**RECYCLING IS
IMPORTANT:
Campus
Commitments**



The campus values recycling—our commitments include:

- Signing the Climate Leadership Commitments-recycling helps reduce our carbon footprint
- An objective in the 2015 version of the campus climate action plan (iCAP) to divert **45%** of “trash can” waste from the landfill by 2020 and **60%** by 2025

**RECYCLING IS
IMPORTANT:
Campus
Commitments**



The campus values recycling—our commitments include:

- The need to comply with the state's Solid Waste Management Act

**RECYCLING IS
IMPORTANT:
Campus
Commitments**



The campus values recycling—our commitments include:

- The need to comply with the state's Solid Waste Management Act
- The desire to go beyond compliance and continue to be an environmental **LEADER** as we were with solar and LEDs

**CAMPUS
RECYCLING IS
COMPLICATED:
A Brief History of
Source Separation**



- We have a sorting system and have been telling people **NOT** to separate materials.

That system was easy for users and helped us achieve a significant level of diversion from the landfill—**30%** is not bad!

**CAMPUS
RECYCLING IS
COMPLICATED:
A Brief History of
Source Separation**



- Recyclables are removed from the overall waste stream at sorting lines at the campus **WASTE TRANSFER STATION**



**CAMPUS
RECYCLING IS
COMPLICATED:
A Brief History of
Source Separation**



- Recyclables are removed from the overall waste stream at sorting lines at the campus waste transfer station
- **NOW** we want everyone to separate materials at the **POINT OF DISPOSAL**, since this will help us divert an even greater percentage of waste from the landfill

**CAMPUS
RECYCLING IS
COMPLICATED:
A Brief History of
Source Separation**



Separating at the point of disposal results in:

- More **EFFICIENT** operation of sorting lines

**CAMPUS
RECYCLING IS
COMPLICATED:
A Brief History of
Source Separation**



Separating at the point of disposal results in:

- More **EFFICIENT** operation of sorting lines
- A greater percentage of **CLEAN** materials with greater market **VALUE**

**CAMPUS
RECYCLING IS
COMPLICATED:
A Brief History of
Source Separation**



Separating at the point of disposal results in:

- More **EFFICIENT** operation of sorting lines
- A greater percentage of **CLEAN** materials with greater market **VALUE**
- A lower percentage of materials **CONTAMINATED** by food waste, that must be **LANDFILLED** when they could have been recycled

**CAMPUS
RECYCLING IS
COMPLICATED:
It's Specific to
Your Building**



Facilities & Services provides service to many but **NOT ALL** buildings

Some waste streams are not put through the sort line. For example:

- Housing has several compactors; those materials do **NOT** go through the sorting line

**CAMPUS
RECYCLING IS
COMPLICATED:
It's Specific to
Your Building**



Practices **VARY** from building to building

- Color-coded bags to identify recyclables are **NOT** used in all buildings
- Some buildings have **SEPARATE** dumpsters for paper and cardboard; others do not

**CAMPUS
RECYCLING IS
COMPLICATED:
It's Specific to
Your Building**



- **Plastic bottles #1 and #2** – more than just soda bottles, check the bottom of liquid soap, milk jugs, and others to find a number
- **Aluminum cans** – also known as Used Beverage Containers (UBC)
- **Paper** – office paper, newspaper, paper folders, notebook paper, envelopes, magazines, and more
- **Cardboard** – ask the BSW where to put your cardboard

USING THE BINS IS IMPORTANT



Separating recyclables into the bins:

- Improves sort-line **EFFICIENCY**. Sorters can separate recyclables **BY TYPE** instead of having to remove trash and then sort by type

USING THE BINS IS IMPORTANT



Separating recyclables into the bins:

- Improves sort-line **EFFICIENCY**. Sorters can separate recyclables **BY TYPE** instead of having to remove trash and sort by type.
- Improves the **QUALITY** of the materials. Cleaner materials have greater market **VALUE**.

USING THE BINS IS IMPORTANT



Separating recyclables into the bins:

- Improves sort-line **EFFICIENCY**. Sorters can separate recyclables **BY TYPE** instead of having to remove trash and sort by type.
- Improves the **QUALITY** of the materials. Cleaner materials have greater market **VALUE**.
- Boosts the percentage of **USABLE** materials by preventing food and other contamination.

RECAP



- We have **SWITCHED TACTICS** to take the campus farther than it's already gone.

RECAP



- We have **SWITCHED TACTICS** to take the campus farther than it's already gone.
- We need **YOUR** help to tell people to put recyclables in the bins; not the trash can.

RECAP



- We have **SWITCHED TACTICS** to take the campus farther than it's already gone.
- We need **YOUR** help to tell people to put recyclables in the bins; not the trash can.
- We want you to understand the complexities so that you can **HELP** students and staff understand why they might see varying practices—and why using the bins really counts!

RESOURCES



- To order recycling bins, contact:
(217) 244-7283, Recycling@Illinois.edu
- To share the Recycling Video, visit:
<https://icap.sustainability.illinois.edu/project/zero-waste>
- To learn more about our Climate Commitments and the Institute for Sustainability, Energy, and Environment (iSEE), visit:
<https://sustainability.illinois.edu/campus-sustainability/>
- For questions about campus recycling Visit F&S Waste Management at:
<http://go.Illinois.edu/recycling>

THANKS



THANK YOU!