

# Campus Transportation Advisory Committee Fall 2025

University of Illinois Urbana-Champaign

Facilities & Services, December 10, 2025

Chair – Morgan White

Director of Strategic Initiatives and Sustainability, F&S

Acting Associate Vice Chancellor and Executive Director, F&S



**Facilities & Services**

UNIVERSITY OF ILLINOIS URBANA-CHAMPAIGN

**Welcome!**



**Facilities & Services**

UNIVERSITY OF ILLINOIS URBANA-CHAMPAIGN

# Agenda



**Facilities & Services**

UNIVERSITY OF ILLINOIS URBANA-CHAMPAIGN

# Agenda

- Introduction – Morgan White (5 minutes)
- University Bicycle Ordinance update – Stacey DeLorenzo (15 minutes)
- Transportation iCAP Team Recommendation – Sarthak Prasad (5 minutes)
- Bike Share Update – Sarthak Prasad (5 minutes)
- EV Charging Stations – Level-1 charging pilot – Sarthak Prasad (5 minutes)
- TDM Updates – Sarthak Prasad and Stacey DeLorenzo (30 minutes)
- Community Updates – Stacey DeLorenzo (5 minutes)



# Introduction

5



**Facilities & Services**

UNIVERSITY OF ILLINOIS URBANA-CHAMPAIGN

# Introduction - Members

Morgan White, chair

## Staff

Sgt. Nicholas Perrine  
Sgt. Ty Ledbetter  
Yasmin Ofiana  
Zach Acton  
Pete Varney  
Shawn Patterson  
Bridgette Moen  
Jake Benjamin  
Justin Peterson  
Matt Brown  
January Boten  
Katie Clegg  
Joshua Mikeworth  
Jamie Parrish  
Charles Boudreaux  
Laura Bleill  
Dana Decair  
Jamie Singson

Miriam Keep  
Mylanda Netherton  
Kiara Drake  
Cheryl Bicknell  
Sarah Miller  
Sheri Glowinski  
Taylor Egerton-Cargo  
Aiah Radwan  
Kathy Walsh  
Kat Grimsley

## Faculty

Jennifer Fraterrigo  
Bumsoo Lee  
Lindsey Braun  
Shelly Zhang  
Yanfeng Ouyang  
Ramez Hajj

## Community representatives

David Happ, Champaign  
John Zeman, Urbana

Jay Rank, MTD  
Roland White, Savoy  
Rita Moroccoima-Black, CCRPC

## Students

Transportation iCAP Team  
Quinn Connolly  
Nick Jukes  
Myra Stevens  
Emily Repetowski  
David Hipp  
SSC representative  
Ben English  
ISC - Environmental Sustainability  
Coordinator  
ISC - Campus Safety Coordinator  
ISC - Health & Wellbeing Coordinator

Stacey DeLorenzo, ex-officio

Sarthak Prasad, ex-officio



# CTAC Responsibilities

- Review aspects of surface transportation on campus, including
  - Pedestrian, bicycle, transit and motorized facilities infrastructure
  - Safety for all modes of transportation interaction on campus
- Responsibilities include items such as:
  - Help identify needs and share information about pedestrian safety initiatives and priorities.
  - Review and make recommendations for prioritizing bicycle infrastructure, education, and enforcement on campus.
  - Provide advisory input to the Commuter Program under development.
  - Review and comment on matters relating to students, faculty, and staff transportation, when needed.
  - Review the University Bicycle Ordinance periodically.



# University Bicycle Ordinance

8



**Facilities & Services**

UNIVERSITY OF ILLINOIS URBANA-CHAMPAIGN



# University Bicycle Ordinance

- CAM FO-13: Bicycle Regulation.
- Read the current document: [University Bicycle Ordinance](#)
- Last update in FY25. Currently in review for the update to be published in FY26.
  - FY25 update focused on e-scooter operations on campus.
  - Reviewed by Campus Transportation Advisory Committee
- This document covers:
  - Definitions
  - Registration of Devices
  - Equipment Required
  - General Rules of Operation
  - Operations on Pathways
  - Parking
  - Penalties



# FY26 Updates

- Definitions updated:
  - SB2285 updated the definition of bicycles.
  - E-Bikes – Class 1, Class 2, and Class 3 E-Bikes
- New definition added:
  - E-Motos/OCEV (Out-of-Class Electric Vehicle)
- General Rules of Operations:
  - No Motor Throttle Use – Class 2 and Class 3 E-Bikes
  - No-Ride Zones
  - Slow Ride Zones for Class 1 E-Bikes and E-Scooters
  - E-Motos/OCEVs
- Penalties:
  - Bicycle Education Fee Waiver – Diversion program – Bike Safety Quiz

10



Trust • Respect • Accountability • Integrity • Teamwork • Safety • Perseverance

# General Rules of Operation on Campus

	University Sidewalks	Bike Lanes & Bike Paths	Shared-Use Paths	Quads	Roadways
Bicycles	Yes	Yes	Yes	No	Yes
Class 1 e-Bikes	Yes (8 mph)	Yes	Yes (8 mph)	No	Yes
Class 2 e-bikes	No	Yes	No	No	Yes
Class 3 e-bikes	No	Yes	No	No	Yes
Low-Speed e-Scooters & Micromobility Devices	Yes (8 mph)	Yes	Yes (8 mph)	No	Yes
Other e-Scooters & Micromobility Devices	No	No	No	No	Yes
Mobility Aids	Yes	Yes	Yes	Yes	Yes – only for crossing
Pedestrians	Yes	Yes – only for crossing	Yes	Yes	Yes – only for crossing
E-motos/ OCEVs	No	No	No	No	Yes

11



Trust • Respect • Accountability • Integrity • Teamwork • Safety • Perseverance

# Bike Safety Quiz

- <https://go.fs.illinois.edu/BikeSafetyQuiz>
- Bike Safety Quiz for Adults and Kids (English and Spanish versions)
- These quizzes are education tools for adults, children, motorists, and truck/bus drivers on how to share the road safely

Adult Bike Safety Quiz – English

Adult Bike Safety Quiz – Spanish

Child Bike Safety Quiz – English

Child Bike Safety Quiz – Spanish

Motorist Driver's Education

Truck Driver

- Adult Bicyclist – for teens and adults
- Child Bicyclist – for 4th and 5th graders (or younger with adult help)
- Motorist/Drivers Ed – for motorists and student drivers
- Truck Driver – for drivers of buses and other large vehicles



Trust • Respect • Accountability • Integrity • Teamwork • Safety • Perseverance

# Transportation iCAP Team Recommendations

13



**Facilities & Services**

UNIVERSITY OF ILLINOIS URBANA-CHAMPAIGN

# FY26 Recommendations

- Travel Reporting on Emburse
- Outdoor E-Bike and E-Scooter Charging



# Travel Reporting on Emburse

- Emburse, formerly ChromeRiver, is the Expense Report Management tool used by all three U of I campuses.
- Currently, the expense reports on Emburse do not include the origin and destination for travel expense reporting.
- We have to annually report our air travel GHG emissions, that we normally estimate using the amount spent. (0.976 kg of eCO<sub>2</sub> per \$ spent)
- Discussed with University of Illinois System and point of contact at UIC as well
  - Follow up meeting on January 9, 2026.
- This recommendation is for all modes of travel.

15



Trust • Respect • Accountability • Integrity • Teamwork • Safety • Perseverance

# Outdoor E-Bike and E-Scooter Charging

- Per [CAM FO-35](#), students are not allowed to bring their e-bikes and e-scooters inside campus buildings to store or charge
- The Transportation iCAP Team recommends that the university install outlets or charging stations to be used for electric bike and scooter charging near bike racks outside of residence halls on UIUC campus
  - We are working with University Housing
- University should educate existing and prospective students and parents on what constitute an electric bicycle
- University only allow batteries certified by UL or similar accreditation bodies to operate on campus

16



Trust • Respect • Accountability • Integrity • Teamwork • Safety • Perseverance





Trust • Respect • Accountability • Integrity • Teamwork • Safety • Perseverance

# Discussion

- Comments or concerns?
- Investigating how to safely store e-bikes and e-scooter
- Question –
  - How much electricity a charging station consumes?
  - How will it be connected to the grid?
  - Will it be metered separately?
  - Who will be responsible to pay for the electricity?
  - Who will be responsible for the maintenance?



# Bike Share Updates

19



**Facilities & Services**

UNIVERSITY OF ILLINOIS URBANA-CHAMPAIGN

# Veo

- 750 bikes in the market
- Fleet consists of
  - Halo-e
  - Cosmo-e
  - Apollo (new – 2 seater)
- Learn more about the program along with the monthly ridership data:  
<https://icap.sustainability.illinois.edu/project/bike-share-veo>



# Veo - Benefits

- Veo has provided a great option for our students to commute on campus.
  - Peak months (September and October) ridership – Average ~85,000 per month
  - Averaging about 40,000 rides per month rest of the year
- Number of abandoned bicycles have gone from 500-600 per year pre-pandemic to about 250 bicycles now.
- Winterization
  - Remove all bicycles in December
  - Relaunch in March

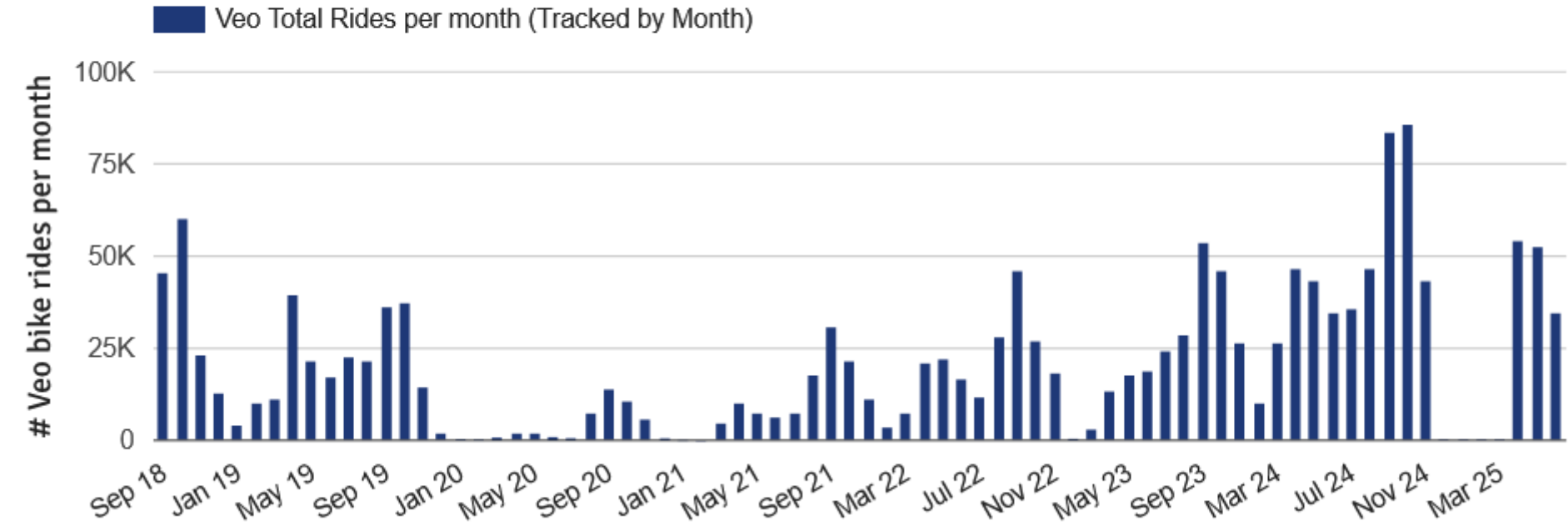
21



Trust • Respect • Accountability • Integrity • Teamwork • Safety • Perseverance

# Veo Ridership

**Veo Total Rides per month**





# Veo – Top Concerns

- Users end their rides at campus bike racks, which takes away bike parking spaces from students who need to lock their bicycles to those bike racks.
  - We are adding [24 off-rack locations](#) for bike share bicycles to redistribute and for users to end their rides
- Bicycles left where they shouldn't be – blocking sidewalk/bike rack access, etc.



# Veo – Operation

- Report Veo parking violations to: [UUCops@veoride.com](mailto:UUCops@veoride.com) or [hello@veoride.com](mailto:hello@veoride.com).
  - It is recommended that [bike@illinois.edu](mailto:bike@illinois.edu) is cc'ed, so we can follow up, as needed.
- Required to respond to and remove any reported improperly parked bicycles on campus per agreement
- E-bikes are charged off-campus and is the responsibility of the vendor.
- E-bikes are not allowed to operate in [No-ride Zone map](#)





# EV Charging Stations – Level-1 charging pilot

25



**Facilities & Services**

UNIVERSITY OF ILLINOIS URBANA-CHAMPAIGN

# Introduction

- Pilot charging/parking experiments on campus as part of a demonstration project to (i) test feasibility of business models (for cost and revenue), and (ii) learn customer behavior and sensitivity to charging options/prices.
- Survey: Average UIUC commute 6.94 miles one way. (See the “Ironwood” column.)
- Level 2 charging is expensive, especially for commuters within Champaign-Urbana. Best-case scenarios for distant commuters: about a 2.5:1 premium price. Typical intown scenarios impose a premium that often exceeds 10:1.
- Level 2 charger usage implies that drivers move vehicles within one hour or two. The result pushes behavior to charge infrequently or to avoid Level 2 units.
- The “lost time” cost of moving a vehicle is substantial, e.g. \$7.50 for 15 min errand for an employee paid \$30/hr.
- Even the longest winter commutes can be supported with outlet-based charging (bring your own cable model) during an 8 hr day.
- Level 1 scenarios presume that vehicles will not be moved.



# Phase 2

- Phase 1 was completed
  - 6 units installed in B4 parking lot
- Phase 2:
  - the research team hopes to (i) make as many installations as possible, and if possible (ii) give EV users an opportunity to choose between L1 and L2 charging next to each other
  - D5 (one slot) and F29 (5 slots)
  - Key of their experiment is to have at least 20-30 installations so that any findings could be statistically significant
  - L1 facilities should not impose significant competition against L2 facilities.
  - The experiment will be carried out in only a few months
  - The finding can help (i) reveal EV user charging preferences, and (ii) help Parking determine L1/L2 pricing schemes that generate best return to the investments in the longer term.

27



Trust • Respect • Accountability • Integrity • Teamwork • Safety • Perseverance

# TDM Updates

28



**Facilities & Services**

UNIVERSITY OF ILLINOIS URBANA-CHAMPAIGN

# TDM Updates

- DOR Updates (3 minutes)
  - Maintenance Matrix with Urbana, Champaign, and Savoy
- DeepWalk Study Analysis – Report Example (2 minutes)
- Infrastructure Updates (20 minutes)
  - Hazelwood Path (1 minute)
  - South Quad Shared Use Path N-S Connection (1 minute)
  - Oak St Complete Street & Sidewalk: \$150,000 (1 minute)
  - Kirk Dr circle drive (1 minute)
  - Pavement Analysis Study Update 2024 – Study: \$25,000 (1 minute)
  - Pennsylvania Avenue from Lincoln Ave to City of Urbana Limits (5 minutes)
  - Lorado Taft Shared-Use Path between 4<sup>th</sup> and 6<sup>th</sup> Street (10 minutes)
- Bike at Illinois (3 minutes)
  - Registration
  - Bicycle Roundup
  - Bike Month Updates
- SSC funded projects (2 minutes)
  - Shipping Containers for bicycle Storage
  - Power and Ventilation for shipping containers
  - Sustainable Transportation Interns



# DOR Updates

30



**Facilities & Services**

UNIVERSITY OF ILLINOIS URBANA-CHAMPAIGN

# Maintenance Matrix

- Urbana
  - Will have another meeting
- Champaign
  - Confirm if it is ready for approval
- Savoy
  - Confirm if it is ready for approval
- After confirmation of completion, we will route an MOU with each agency for signatures



# Division of Responsibility (DOR) Campus

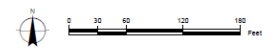
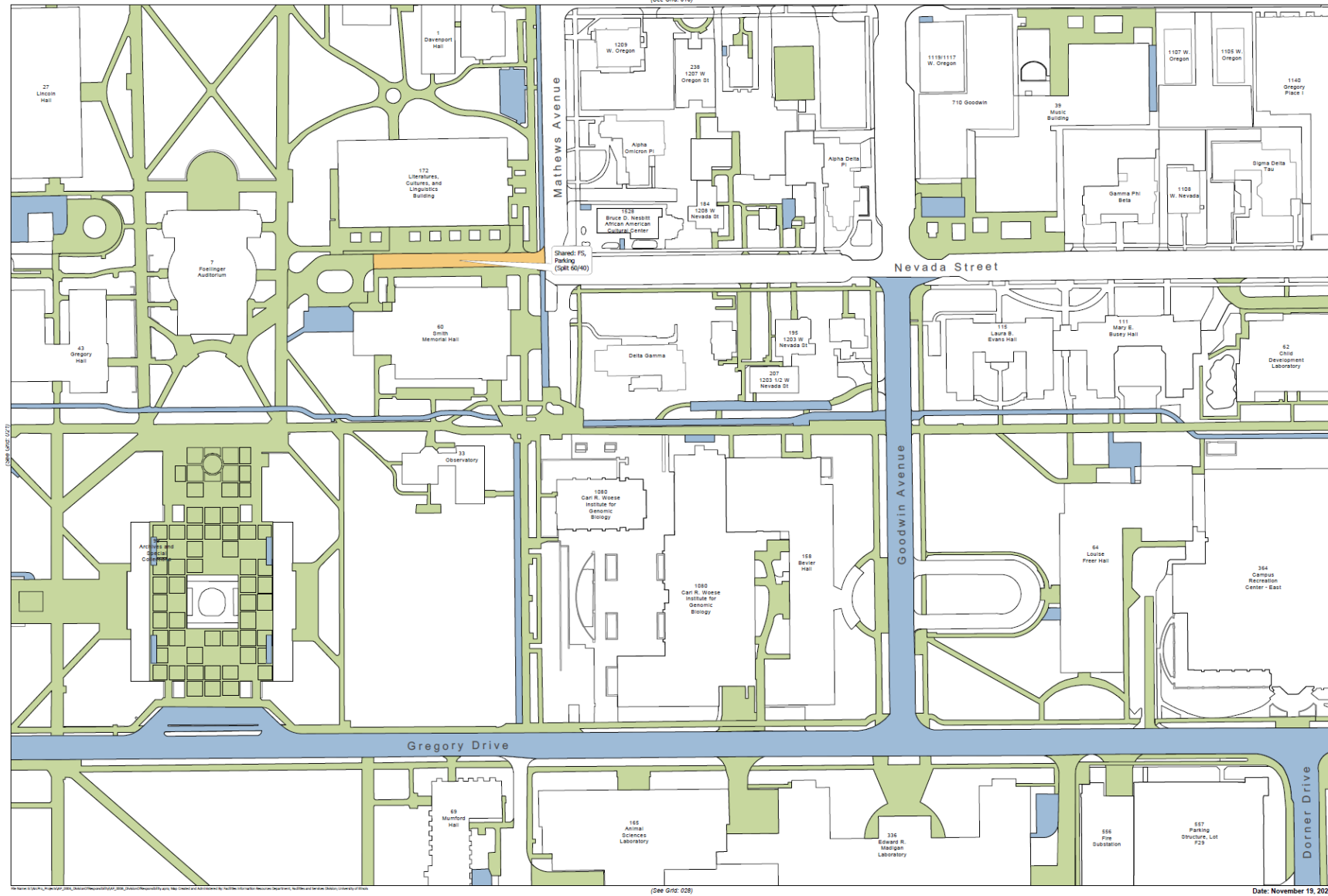
- DOR Completed:
  - F&S (internal)
  - Housing
  - DIA
  - Campus Recreation
  - Parking
  - ACES
  - Arboretum
  - PRI
- DOR pending further discussion
  - Krannert Center – In progress
  - McKinley Health Center driveways – Pending
  - Lot Adjacent to Printing Services Parking Lot - Pending
- Publish the DOR map

32

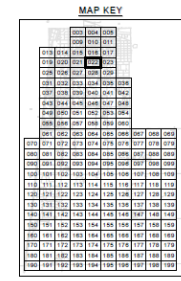


Trust • Respect • Accountability • Integrity • Teamwork • Safety • Perseverance





- DIVISION OF RESPONSIBILITY**
- Bldg Maintenance Crafts/Trades (Shop BL)
  - Capital Programs (Shop TD)
  - Utilities - UIUC
  - Shared

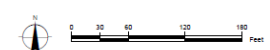
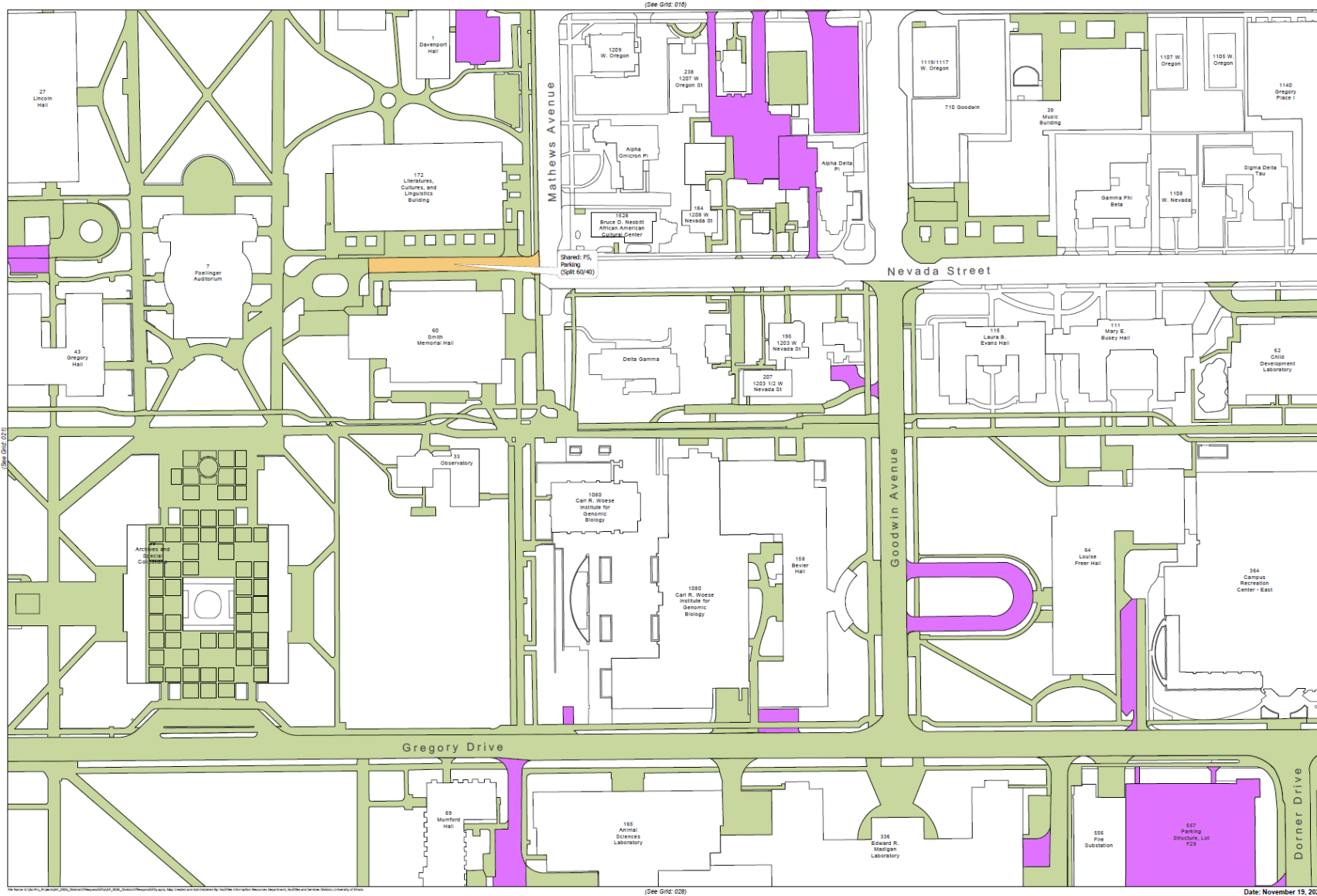


**FACILITIES AND SERVICES  
DIVISION OF RESPONSIBILITY**

**I** Facilities & Services  
UNIVERSITY OF ILLINOIS URBANA-CHAMPAIGN

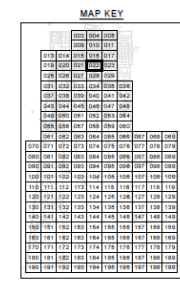
**022**





**DIVISION OF RESPONSIBILITY**

- Parking Department
- Facilities and Services
- Shared



**CAMPUS PARKING,  
F&S DIVISION OF RESPONSIBILITY**

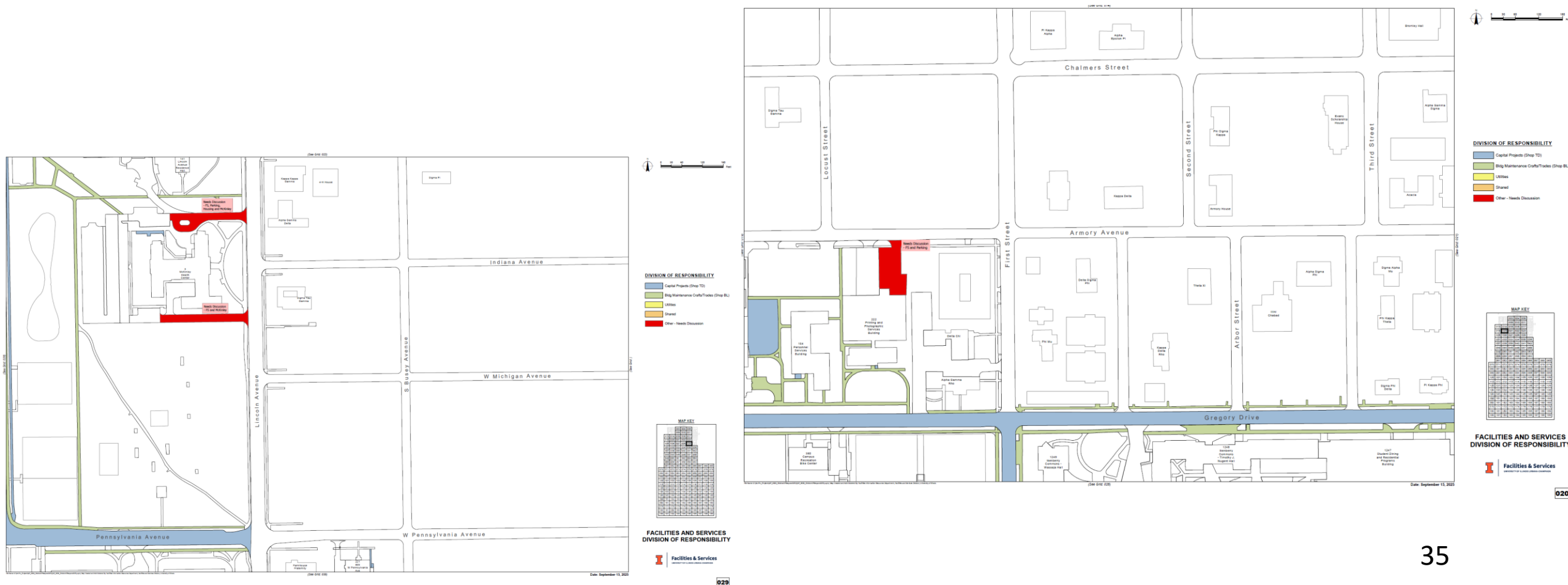


022



Trust • Respect • Accountability • Integrity • Teamwork • Safety • Perseverance

# Discussion items - Example



# DeepWalk Study Analysis

36



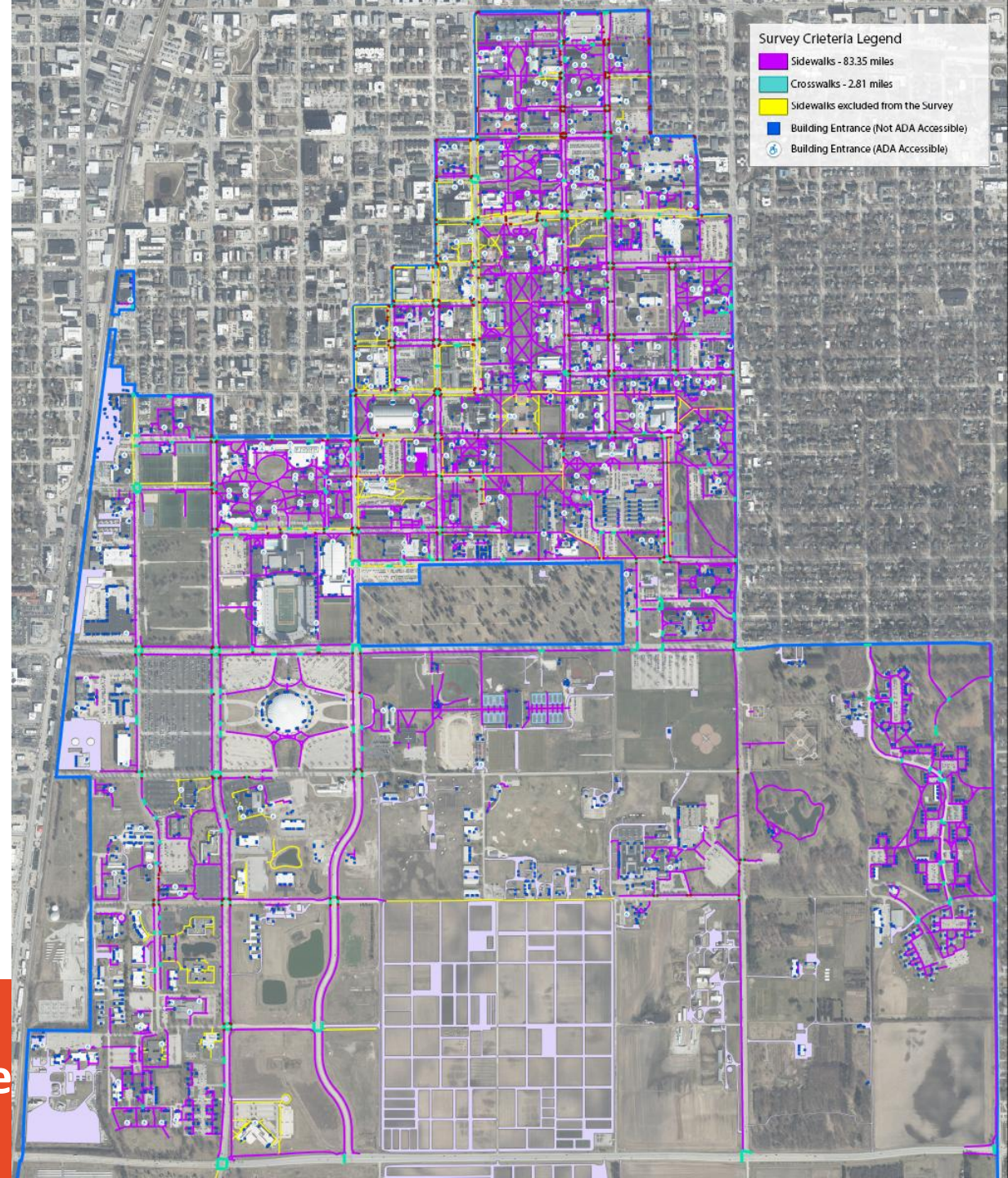
**Facilities & Services**

UNIVERSITY OF ILLINOIS URBANA-CHAMPAIGN



# ADA compliance study

- ADA compliance study – DeepWalk -  
Contract issued with DeepWalk
  - Model the campus sidewalks and identify deficiencies on campus
  - Processed data: 66.2 miles
- All data was updated in our GIS database and shared



Trust • Respect • Accountability • Integrity

# Example: Sidewalk segment by Observatory

38



**Facilities & Services**

UNIVERSITY OF ILLINOIS URBANA-CHAMPAIGN





Accessibility Grade

2 out of 5

Access Description

Major Barriers to Access Found

Material

Concrete

Length Inspected

114 ft

Area Inspected

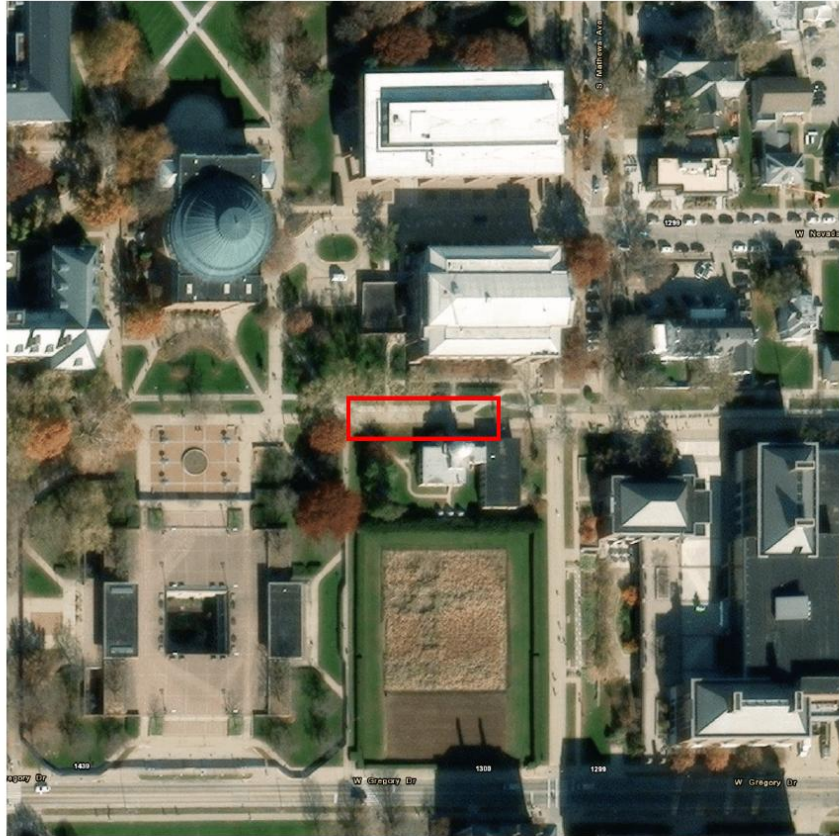
1360 ft²

Detectable Warning

No DW Necessary

Percent Deteriorated

9%



## Scan Data

Metadata	
Scan ID	121596
Inspection Date	2024-07-11
GPS Coordinates	40.1054, -88.2263
Accessibility Grade	2
Access Description	Major Barriers to Access Found
Material	Concrete
Detectable Warning	No DW Necessary
Length Inspected	114 ft
Area Inspected	1360 ft²

Condition Areas	
Cracked Area	0 ft²
Deteriorated Area	126 ft²
Panel Area	1,360 ft²
Percent Deteriorated	9%

Slopes & Measurements	
Average Cross Slope	2.7%
Max Cross Slope	5.0%
Average Running Slope	1.6%
Max Running Slope	2.7%
Average Width	130.6 in
Min Clear Width	66.8 in

Violations					
Cross Slope		Running Slope		Clear Width	
Extreme	0	Extreme	0	Extreme	0
Severe	6	Severe	0	Severe	0
Moderate	5	Moderate	0	Moderate	0
Minor	4	Minor	0	Minor	0



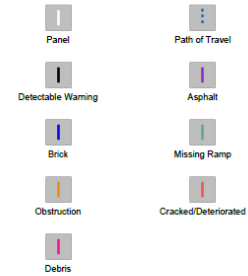


## Annotated Raster Legend

### Ramp Violation Thresholds

	Cross Slope	Run Slope	Width
Severity			
Minor	2.5% - 3% 	8.3% - 9% 	42" - 46" 
Moderate	3% - 4% 	9% - 10% 	36" - 42" 
Severe	4% - 6% 	10% - 12% 	24" - 36" 
Extreme	6+% 	12+% 	0" - 24" 
Score Impact	High	High	High

### Regions



### Midblock Violation Thresholds

	Cross Slope	Run Slope	Width
Severity			
Minor	2.5% - 3% 	8.3% - 9% 	42" - 46" 
Moderate	3% - 4% 	9% - 10% 	36" - 42" 
Severe	4% - 6% 	10% - 12% 	24" - 36" 
Extreme	6+% 	12+% 	0" - 24" 
Score Impact	High	High	High

### Manual Tags



Trip Hazard





# Infrastructure Updates

41



**Facilities & Services**

UNIVERSITY OF ILLINOIS URBANA-CHAMPAIGN

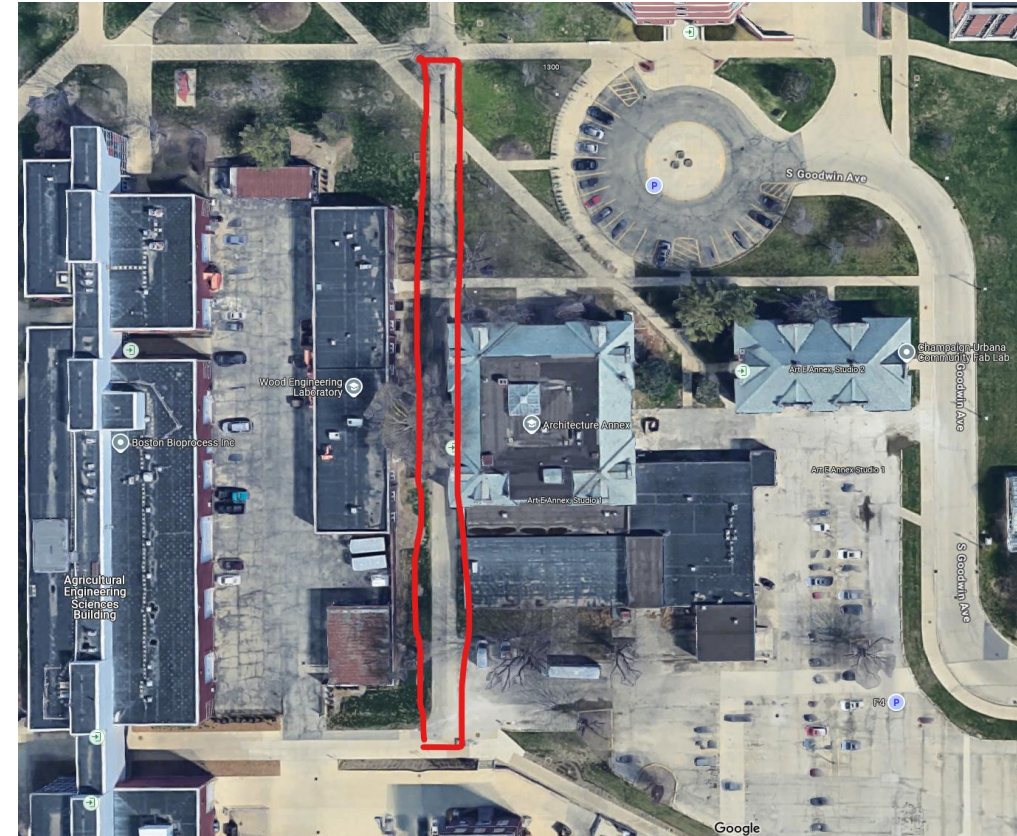
# Hazelwood Dr Shared-Use Path Design

- Budget to complete the design work - \$50,000
- TERRA Engineering was hired to design this project
- 50% Construction Documents received in September 2025
- Design expected to complete in early Spring 2026
- Project will include lighting. SSC funding request will be sent for the construction
- Construction will be in conjunction to the construction of U21054 Dorris Kelly Christopher Extension building, expected in summer 2026



# South Quad N-S Shared-Use Path Design

- We will remove both the bike path and sidewalk
- Install one 10-12' wide shared use path to accommodate both bicycles and pedestrians
- Budget to complete the design work - \$100,000
- TERRA Engineering was hired to design this project
- 50% Construction Documents received in September 2025
- Design expected to complete in early Spring 2026
- We will look at the funds available for construction to determine what work can be done in summer 2026



43

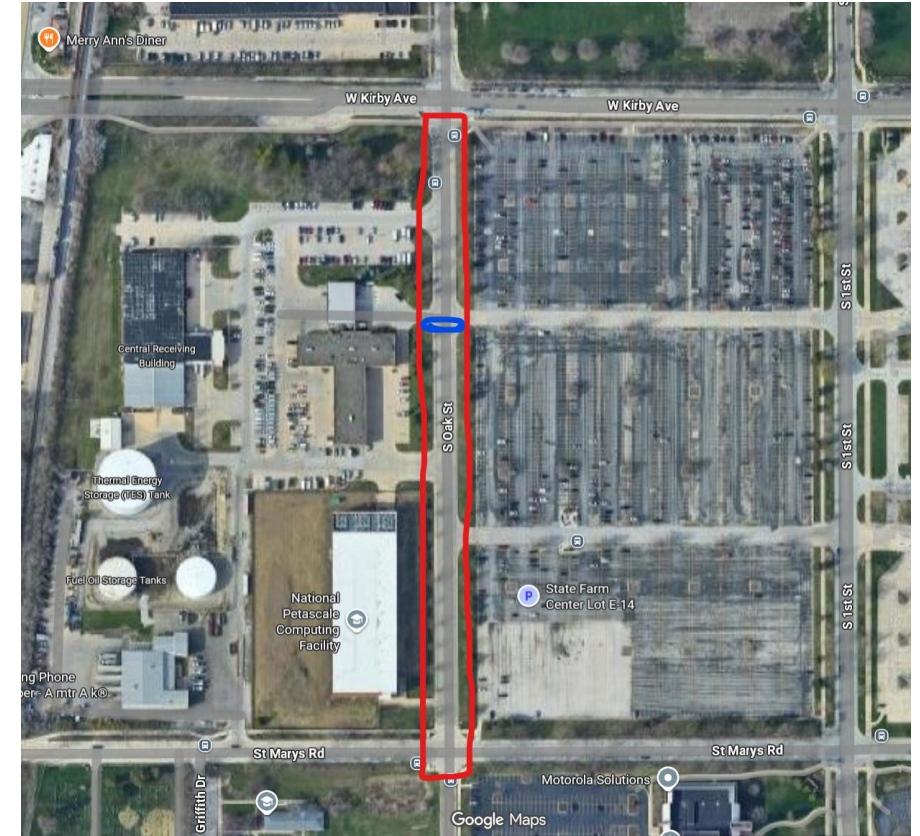


Trust • Respect • Accountability • Integrity • Teamwork • Safety • Perseverance



# Oak St Complete Street & Sidewalk

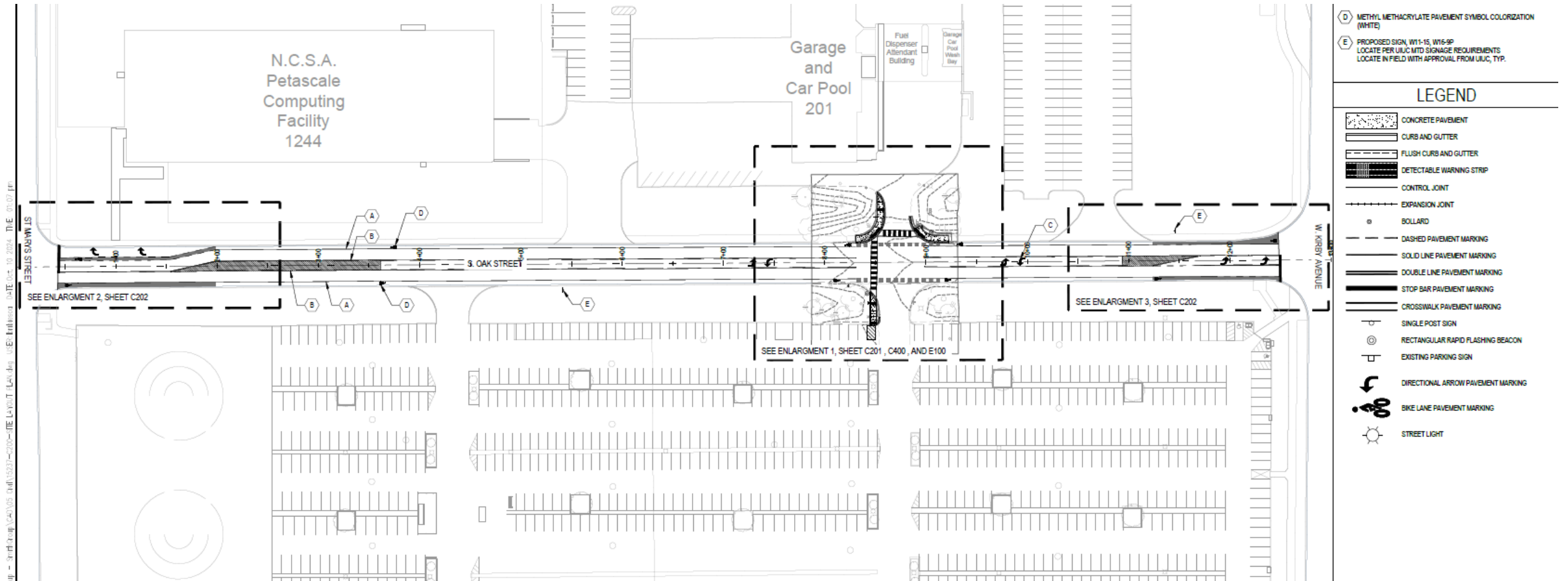
- Oak Street from Kirby Ave and St. Mary's Road
- Curb cut and crosswalks at G&C project in construction due to be completed by Spring
- Road Diet (additional funds need to be secured) –
  - 4 lanes to be transitioned to 3 lanes – 1 lane each side and 1 turn lane
  - Bike Lanes on both sides of the street



44



Trust • Respect • Accountability • Integrity • Teamwork • Safety • Perseverance



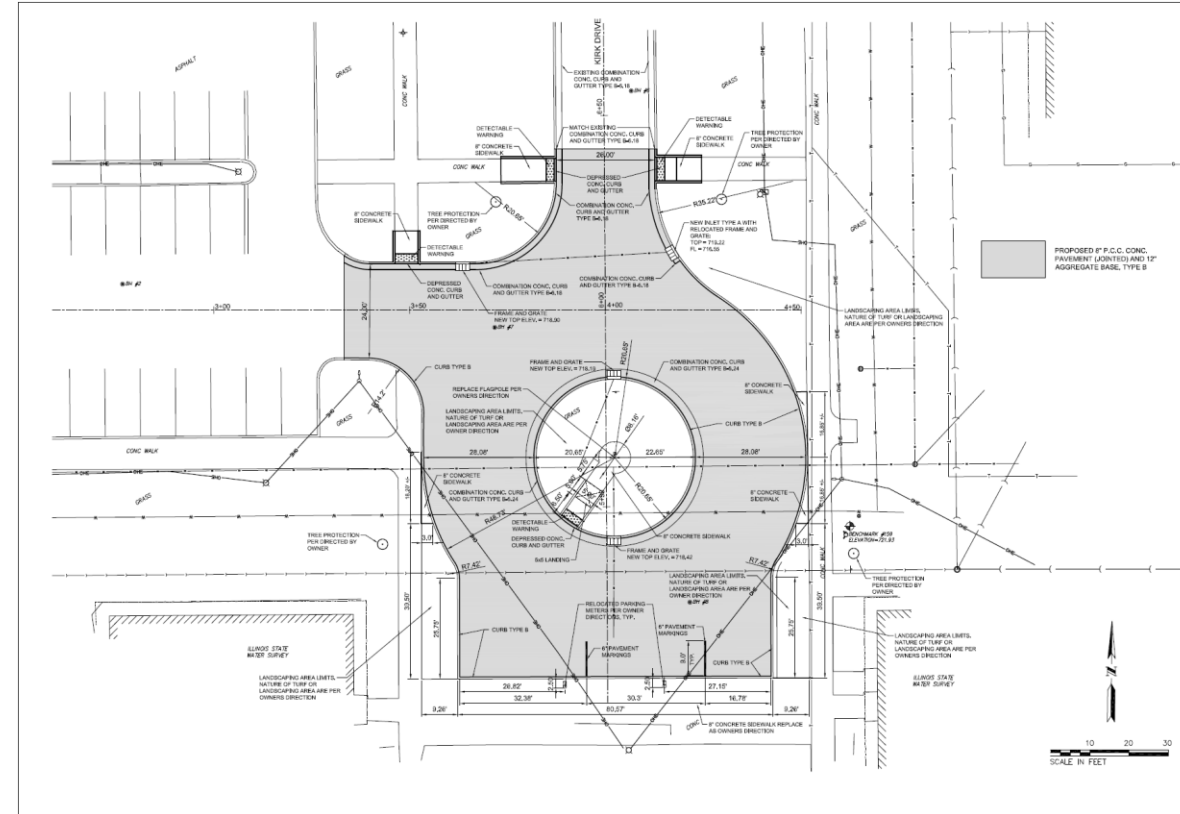
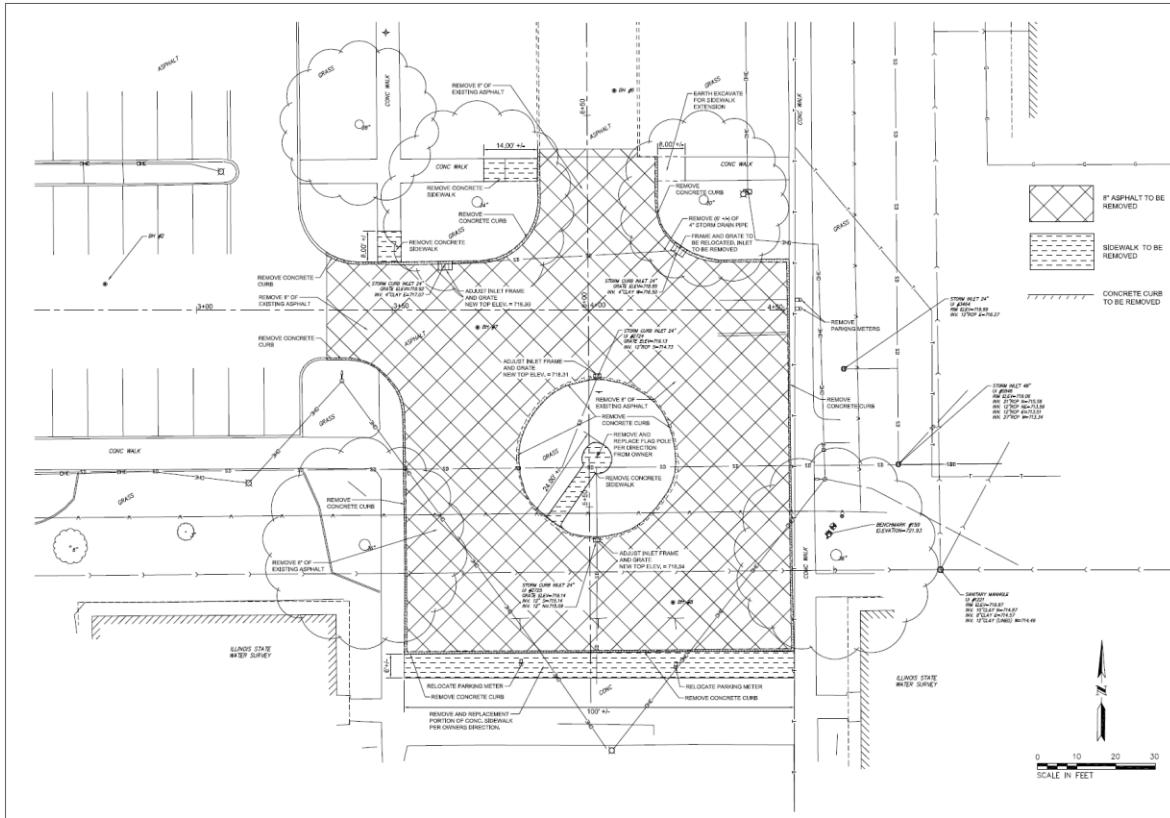
# Kirk Dr circle drive

- Kirk Drive Reconstruction improvements will consist of full-depth removal and reconstruction of approximately 8,200 square feet of the circle drive at the south end of Kirk Drive.
- Sidewalk removal and replacement around the perimeter of the circle drive will be included as well.
- Portions of curb and sidewalks may be recommended for upgrades as necessary to meet the adjacent pavement improvements and to rectify any existing violations to current accessibility codes and standards.
- Design complete. Construction will be in-house.



Trust • Respect • Accountability • Integrity • Teamwork • Safety • Perseverance

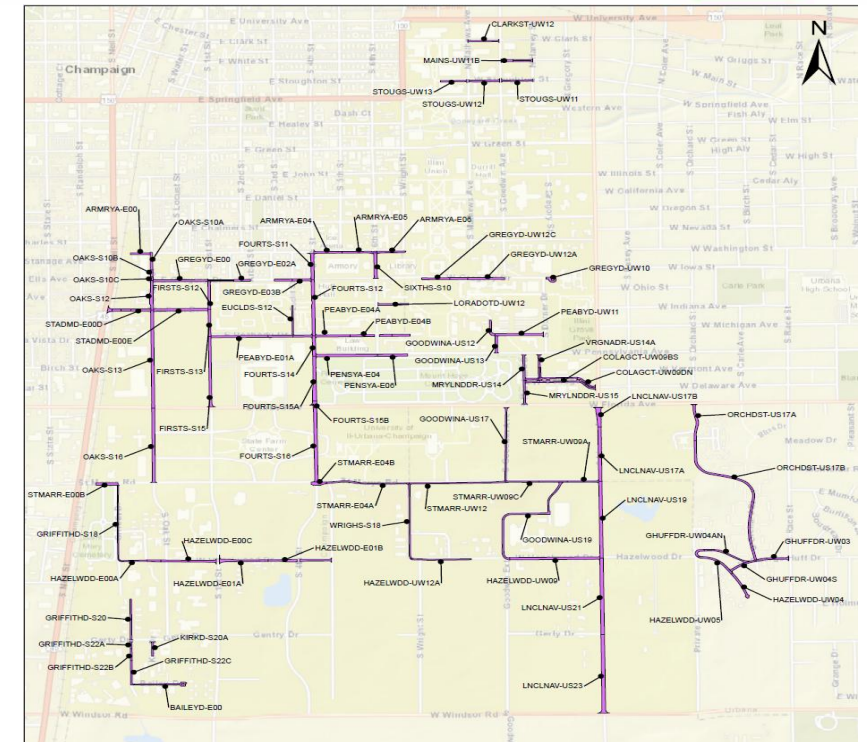
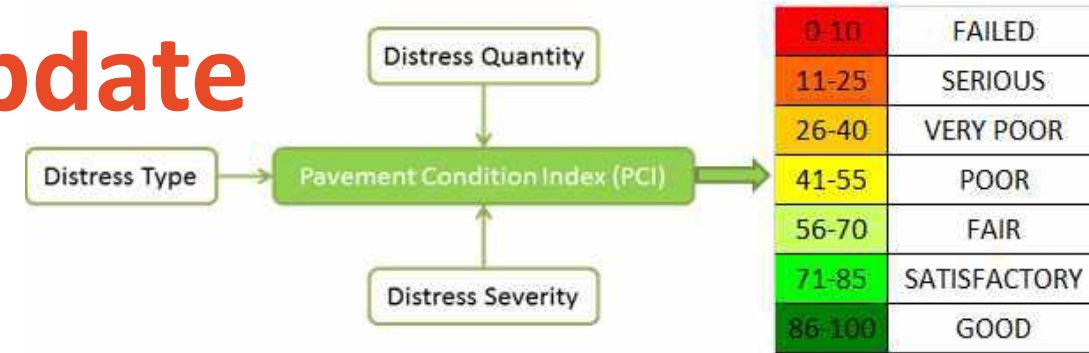




Trust • Respect • Accountability • Integrity • Teamwork • Safety • Perseverance

# Pavement Analysis Study Update

- Expected to be completed this year
- Update the University PAVER™ database with work performed since the 2020 update for approximately 20 miles of roadways
- Conduct PCI surveys for University roads and update PAVER™ database using map and section list provided by the U of I
- The project will include up to five budget scenarios.



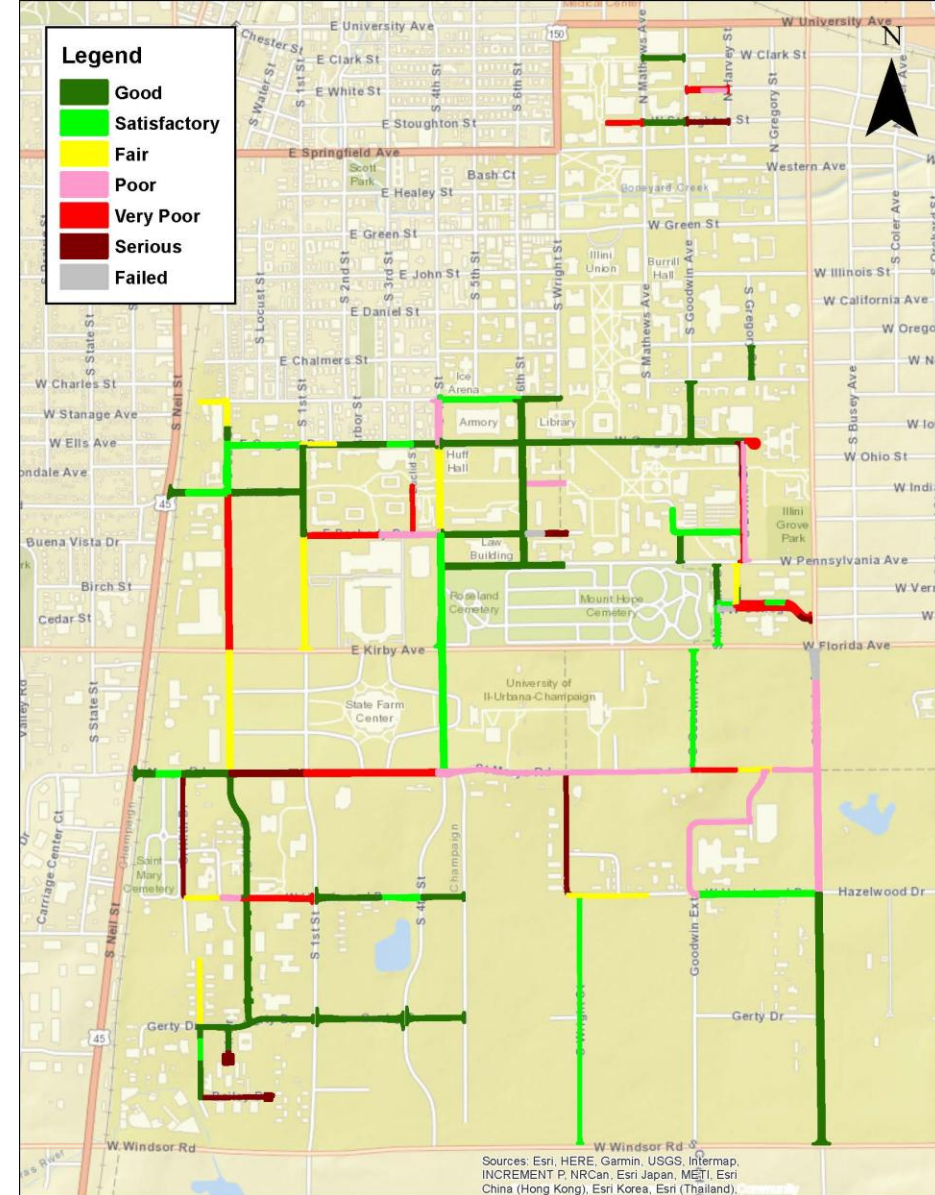
Trust • Respect • Accountability • Integrity • Teamwork • Safety • Perseverance



# PCI Results

PCI Range		Condition Category	
100	86	Good	
85	71	Satisfactory	
70	56	Fair	
55	41	Poor	
40	26	Very Poor	
25	11	Serious	
10	0	Failed	

**Network Area-Weighted  
PCI = 68**



Trust • Respect • Accountability • Integrity • Teamwork • Safety • Perseverance

# Pennsylvania Avenue from Lincoln Ave to City of Urbana Limits

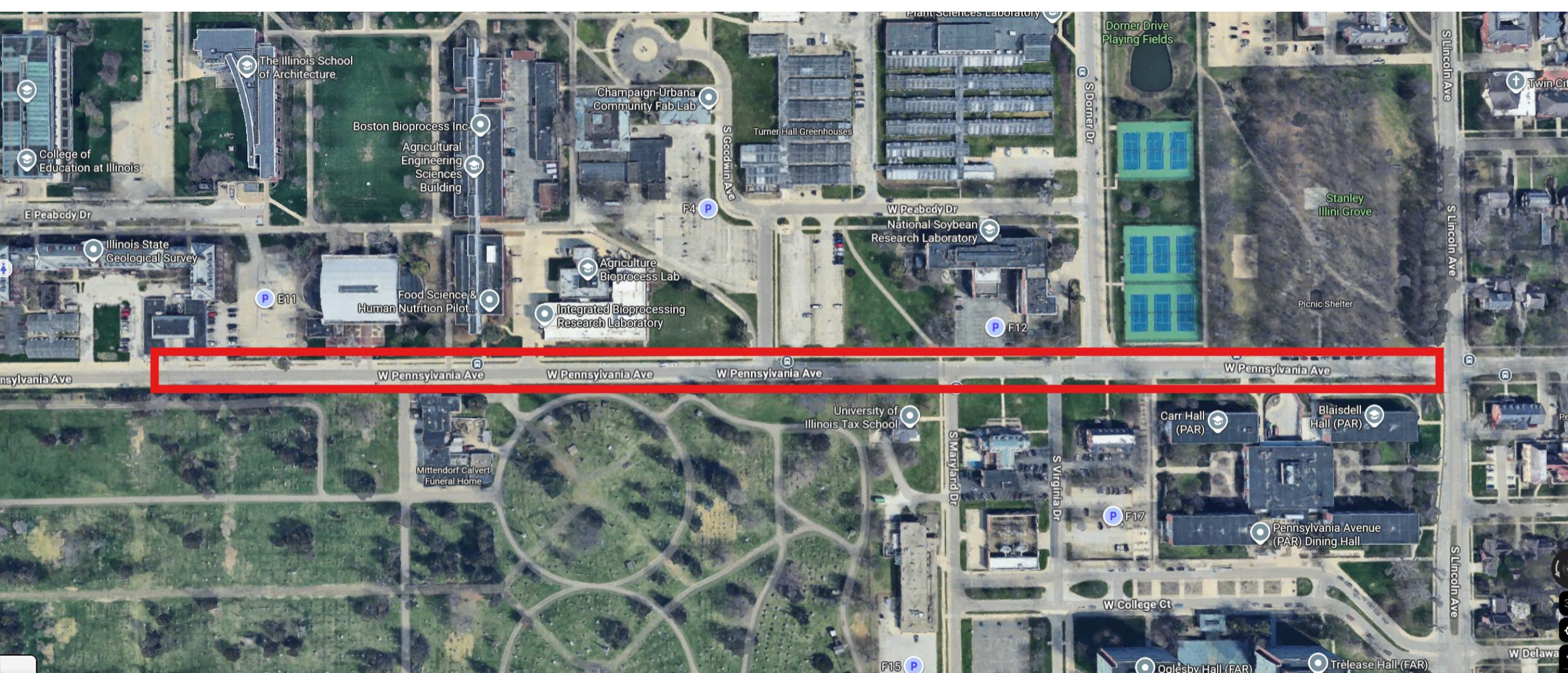
- Reconstruction of Pennsylvania Ave from City Limits to Lincoln Ave.
- This project shall provide full-depth replacement of the pavement and base reconstruction including removals, grading, PCC pavement, PCC sidewalk improvements for ADA compliance, bike facilities improvements, PCC driveway pavement, curb and gutter, storm sewer improvements -as needed, drainage remediation, electrical for roadway lighting, pavement marking and roadway/pedestrian lighting.
- Design expected to complete in Spring 2026

50



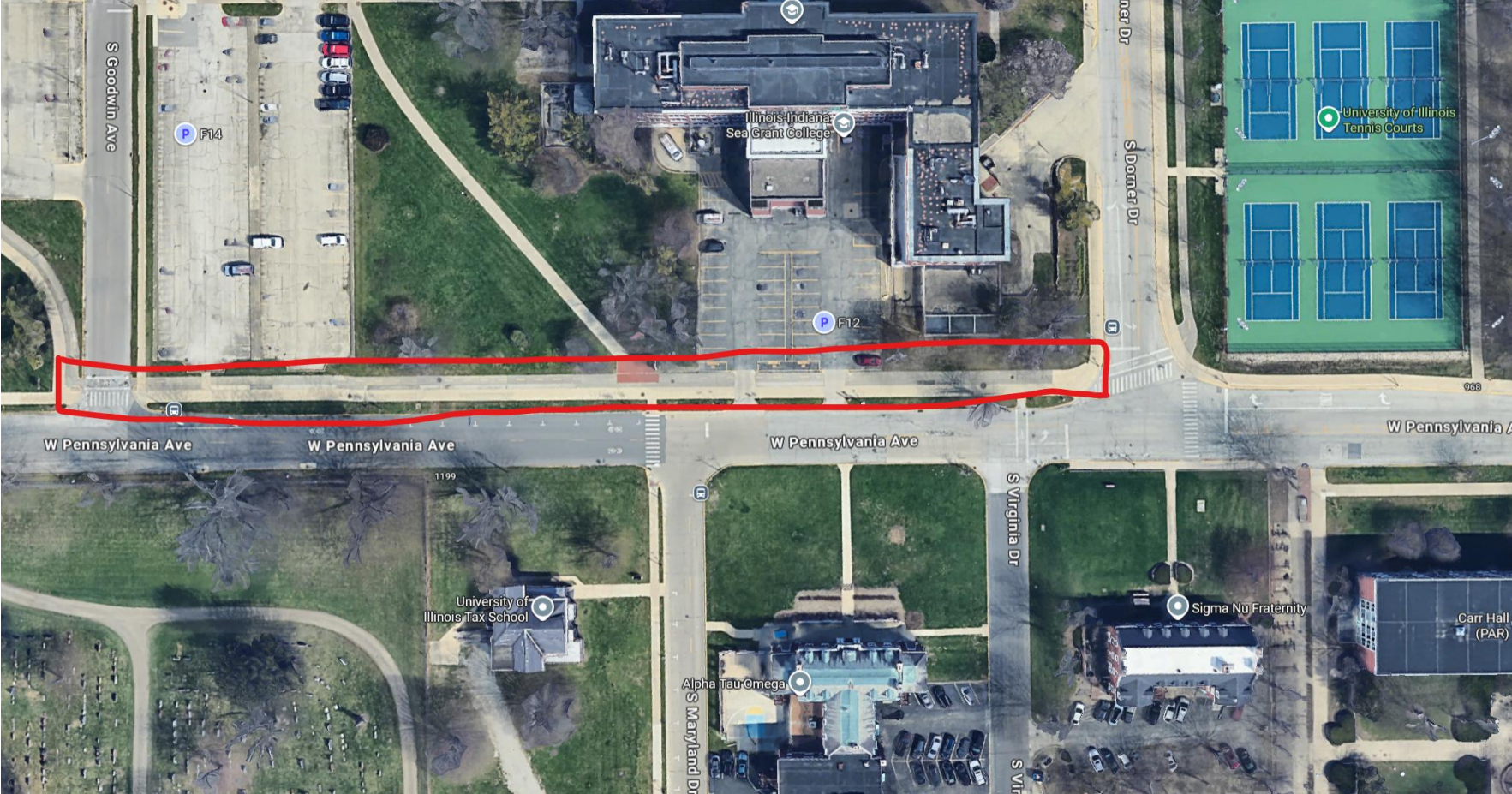
Trust • Respect • Accountability • Integrity • Teamwork • Safety • Perseverance







Removing a section of bike path.  
The bikes will go on the street as  
sharrows.



## Lorado Taft Shared-Use Path between 4<sup>th</sup> and 6<sup>th</sup> Street

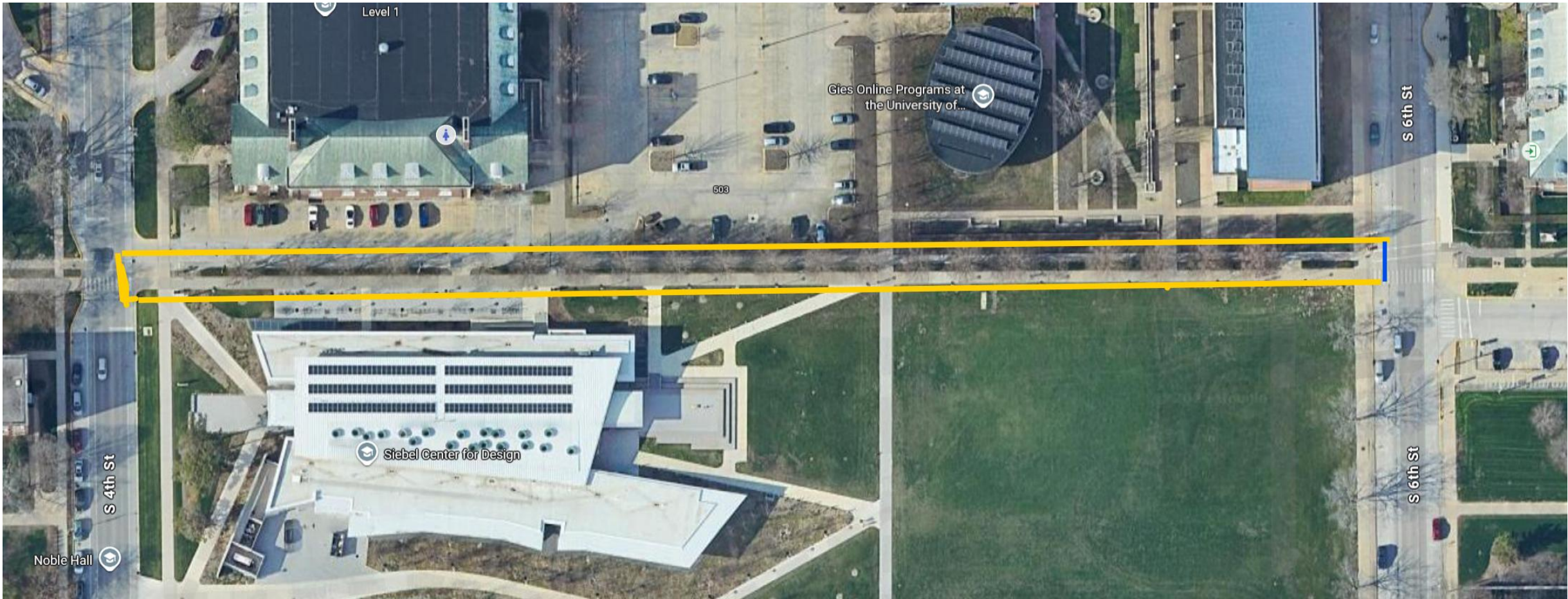
- Need to improve the capacity for the existing shared-use path.
- PSC hired to design this project
- The objective in the Campus Bicycle Master Plan and Campus Landscape Master Plan is to widen, repave, and relight the existing east/west bike path and pedestrian sidewalk, located within the former Laredo Taft road corridor between 4th Street and 6th Street, immediately south of Georges Huff Hall, Wymer Hall, and the Business Instructional Facility, and immediately north of the Seibel Design Center, for approximately 850LF of travel.
- Design is expected to complete by May 2026.

53



Trust • Respect • Accountability • Integrity • Teamwork • Safety • Perseverance





# Discussion

- Any questions? Comments?



# Bike at Illinois Updates

56



**Facilities & Services**

UNIVERSITY OF ILLINOIS URBANA-CHAMPAIGN



# Bike Registration

- Number of Registrations:
  - FY21: 506
  - FY22: 685
  - FY23: 927
  - FY24: 925
  - FY25: 774
  - FY26 (so far): 677
- Monthly numbers can be found on the iCAP Portal:  
<https://icap.sustainability.illinois.edu/project/bicycle-registration>
- 9 shield pick up locations: <https://bike.illinois.edu/register-your-bike/shield-pick-up-locations/>



# Bicycle Round-Up

- Timeline
  - Start of the Tagging: 5/24/2025
  - End of tagging process: 5/31/2025
  - Start of the identification of abandoned bicycles: 6/17/2025
  - End of the identification of abandoned bicycles: 6/24/2025
  - Parking to remove abandoned bicycles (Start): 7/8/2025
  - Parking to remove abandoned bicycles (End): 7/23/2025
  - Inventory impounded bicycles (End): 7/23/2025
  - Bicycle Retrieval end date: 9/26/2025
- Bicycles tagged: 665
- Abandoned bicycles impounded: 218
- Bicycles Returned: ~20
- Donations of unclaimed bicycles to the Bike Project of Urbana-Champaign: September 29, 2025
- Learn more: [Collection and Donation of Abandoned Bicycles](#)

58



Trust • Respect • Accountability • Integrity • Teamwork • Safety • Perseverance

# End of year round up of bicycles – summer 2025

Say **NO** to **BIKE ABANDONMENT!**

All abandoned bicycles left on campus are impounded.

**DON'T WANT IT? DONATE IT!**

[go.fs.illinois.edu/DonateBikes](https://go.fs.illinois.edu/DonateBikes)

This postcard features a dark blue background with a photograph of a bicycle lying on its side in a bike rack. The text is in white and orange. A QR code is located in the bottom left corner.

Don't leave them out to *Pasture*  
(or we'll take them. Muah-ha haaaa!)

All unwanted bicycles will be collected. Remove the **ORANGE STICKER** to avoid impound.

**Go to:** [go.fs.illinois.edu/BicycleRoundup](https://go.fs.illinois.edu/BicycleRoundup)

This postcard has an orange header and a dark blue body. It features a photograph of bicycles parked on a grassy field. The text is in white and orange. A QR code is in the bottom right corner.

**I ILLINOIS**

Left your bicycle in May?  
**GET IT BACK!**

Send an email to [bike@illinois.edu](mailto:bike@illinois.edu) with:

- Make/model
- Serial number (if possible)
- Color
- Photo of bicycle
- Last location

Bike registration will be required along with a retrieval fee. Deadline Friday, September, 26, 2025.

This postcard features a photograph of a man with a beard and sunglasses riding a bicycle. The text is in white and blue. A QR code is in the bottom right corner.

59



Trust • Respect • Accountability • Integrity • Teamwork • Safety • Perseverance

# Bike Month Events

- 15<sup>th</sup> annual Bike to Work Day 2025 on September 10, 2025
  - 16 welcoming stations, including 8 on-campus
    - 3 new locations – Main and Mathews (UIPD), First and Windsor (Carle), Centennial Park (Champaign Parks)
  - More than 1,000 pre-registrations
- 18<sup>th</sup> annual Light the Night 2025 on September 16, 2025
  - 4 campus locations
    - Alma Mater
    - Green and Lincoln
    - Hallene Gateway
    - Ikenberry Quad
  - Installed bike light sets to nearly 650 bicycles

60



Trust • Respect • Accountability • Integrity • Teamwork • Safety • Perseverance

**I** ILLINOIS

# Bike to Work Day

**Sept. 10, 7-10 a.m.**



Free refreshments and T-shirts  
at campus pop-up locations!



BROUGHT TO YOU BY: BIKE MONTH PLANNING TEAM, F&S, CAMPUS RECREATION, AND UNIVERSITY HOUSING

**I** ILLINOIS

# LIGHT the Night

Free bike light giveaway:  
You must bring your bike!

**Tuesday  
September 16  
4-7 p.m.**

Alma Mater Plaza, Hallene Gateway, Ikenberry Commons,  
and Green Street/Lincoln Avenue

SUPPORTED BY F&S, CAMPUS RECREATION, UNIVERSITY HOUSING, CITY OF URBANA, CITY OF CHAMPAIGN, AND MTD



61



Trust • Respect • Accountability • Integrity • Teamwork • Safety • Perseverance





62



Trust • Respect • Accountability • Integrity • Teamwork • Safety • Perseverance

# SSC Funded Projects

63



**Facilities & Services**

UNIVERSITY OF ILLINOIS URBANA-CHAMPAIGN

# SSC Funded Projects

- Shipping containers for bicycle storage – \$70,000
  - Purchased and installed seven 8' x 40' shipping containers
  - Installed hooks on one wall of each shipping containers
  - Each shipping container has a capacity of 45-50 bicycles
  - So far, we have spent nearly \$60,000
- Power and Ventilation for shipping containers – SSC awarded \$60,511
- Sustainable Transportation Interns – SSC awarded \$50,000
  - Emily Repetowski is the current intern





# Community Updates

65



**Facilities & Services**

UNIVERSITY OF ILLINOIS URBANA-CHAMPAIGN

# Community Updates – City of Urbana

- Springfield Avenue:
  - Plan to resurface Springfield from Wright to Gregory in 2026, with road closure restricted to the university's summer session.
- Florida Avenue:
  - Rehabilitation of the corridor from Wright to Hillcrest is expected to be done with design by mid 2027. Construction expected to start in early 2028.
  - The shared use path from Lincoln to Race will be built at the same time as the corridor work, unless the funding for the path requires it to be constructed sooner.
- Lincoln Avenue:
  - The corridor study from Florida to Green was endorsed by Urbana City Council. Funding for construction is 4 to 5 years out, unless outside funding were attained. Design will begin in a couple years.

66



Trust • Respect • Accountability • Integrity • Teamwork • Safety • Perseverance

**Thank you!**

Contact F&S TDM at:

[fandscampustdm@illinois.edu](mailto:fandscampustdm@illinois.edu)

Stacey DeLorenzo

Sarthak Prasad



**Facilities & Services**

UNIVERSITY OF ILLINOIS URBANA-CHAMPAIGN