

Campus Transportation Advisory Committee

University of Illinois Urbana-Champaign

Facilities & Services, May 5, 2026

Chair – Morgan White

Interim Associate Vice Chancellor of F&S



Facilities & Services

UNIVERSITY OF ILLINOIS URBANA-CHAMPAIGN

Welcome!



Facilities & Services

UNIVERSITY OF ILLINOIS URBANA-CHAMPAIGN

Agenda

- Introduction – Morgan White (5 minutes)
- TDM Updates – Sarthak Prasad and Stacey DeLorenzo (25 minutes)
- ADA Compliance for Crosswalks and Building Ramps – Emily Repetowski and Utsavi Shah (10 minutes)
- Bike at Illinois Website – Sarthak Prasad (5 minute)
- Bike Audit of the Campus – Sarthak Prasad (5 minutes)
- Community Updates – (5 minutes)



Introduction



Introduction - Members

Morgan White, chair

Staff

Sgt. Nicholas Perrine
Sgt. Ty Ledbetter
Yasmin Ofiana
Zach Acton
Pete Varney
Shawn Patterson
Bridgette Moen
Jake Benjamin
Justin Peterson
Matt Brown
January Boten
Katie Clegg
Joshua Mikeworth
Jamie Parrish
Charles Boudreaux
Roger West
Dana Decair
Jamie Singson

Miriam Keep
Myllinda Netherton
Kiara Drake
Cheryl Bicknell
Sarah Miller
Sheri Glowinski
Taylor Egerton-Cargo
Aiah Radwan
Kathy Walsh
Kat Grimsley

Faculty

Jennifer Fraterrigo
Bumsoo Lee
Lindsey Braun
Shelly Zhang
Yanfeng Ouyang
Ramez Hajj

Community representatives

David Happ, Champaign
TBD, Urbana

Jay Rank, MTD
Roland White, Savoy
Rita Moroccoima-Black, CCRPC

Students

Transportation iCAP Team
Quinn Connolly
Nick Jukes
Myra Stevens
Emily Repetowski
David Hipp
SSC representative
Ben English
ISC - Environmental Sustainability
Coordinator
ISC - Campus Safety Coordinator
ISC - Health & Wellbeing Coordinator

Stacey DeLorenzo, ex-officio

Sarthak Prasad, ex-officio



CTAC Responsibilities

- Review aspects of surface transportation on campus, including
 - Pedestrian, bicycle, transit and motorized facilities infrastructure
 - Safety for all modes of transportation interaction on campus
- Responsibilities include items such as:
 - Help identify needs and share information about pedestrian safety initiatives and priorities.
 - Review and make recommendations for prioritizing bicycle infrastructure, education, and enforcement on campus.
 - Provide advisory input to the Commuter Program under development.
 - Review and comment on matters relating to students, faculty, and staff transportation, when needed.
 - Review the University Bicycle Ordinance periodically.



TDM Updates



Bike Registration

- Number of Registrations:
 - FY21: 506
 - FY22: 685
 - FY23: 927
 - FY24: 925
 - FY25: 774
 - FY26 (so far): 754
- Monthly numbers can be found on the iCAP Portal: <https://icap.sustainability.illinois.edu/project/bicycle-registration>
- 8 shield pick up locations: <https://bike.illinois.edu/register-your-bike/shield-pick-up-locations/>



End of year round up of bicycles

- Hiring 2 students over the summer
- Messaging ready to be sent out to the campus about donating unwanted bicycles to the Bike Center or the Bike Project
- Project will begin after graduation
- Tag the abandoned bicycles: first and second week of June
- 2 weeks of notice to remove the tags
- Verification of abandoned bicycles: End of June
- Removal of abandoned bicycles and transportation of the abandoned bicycles (by Parking) to *the Shipping Containers*: by early July
- Inventory of all bicycles at Round Barns: by last week of July
- Retrieval of bicycles by users: Last week of August until September 25, 2026
- Donations of unclaimed bicycles to Campus Bike Center and the Bike Project of Urbana-Champaign: October 9, 2026



DON'T ABANDON YOUR BIKE. DONATE IT!

All bicycles left on campus are impounded
over the summer.



go.fs.illinois.edu/DonateBikes



Bike for Earth Day



I

Tuesday, April 21
4-7 p.m.

At 4 Locations:

- Alma Mater Plaza
- Green St. & Lincoln Ave.
- Ikenberry Commons
(by Flagg Hall)
- National Soybean Research
Center (along Pennsylvania)

Stop by for free
bike lights or a t-shirt!



go.fs.illinois.edu/BikeForEarthDay

11



Bike for Earth Day

- Second annual Bike for Earth Day event hosted on April 21, 2026
- Locations:
 - Alma Mater
 - Intersection of Green and Lincoln
 - National Soybean Research Center
 - Flagg Hall Bike Shelter
- Nearly 200 participated
- Installed nearly 175 light sets



12



Bike Census

- Event occurred on Tuesday, April 14, 2026.
- 23 volunteers counted 35 zones inside campus boundary only.
- Counted:
 - On-rack: 3,415
 - E-bike: 96
 - E-scooter: 223
 - Veo: 494
 - Off-rack: 101

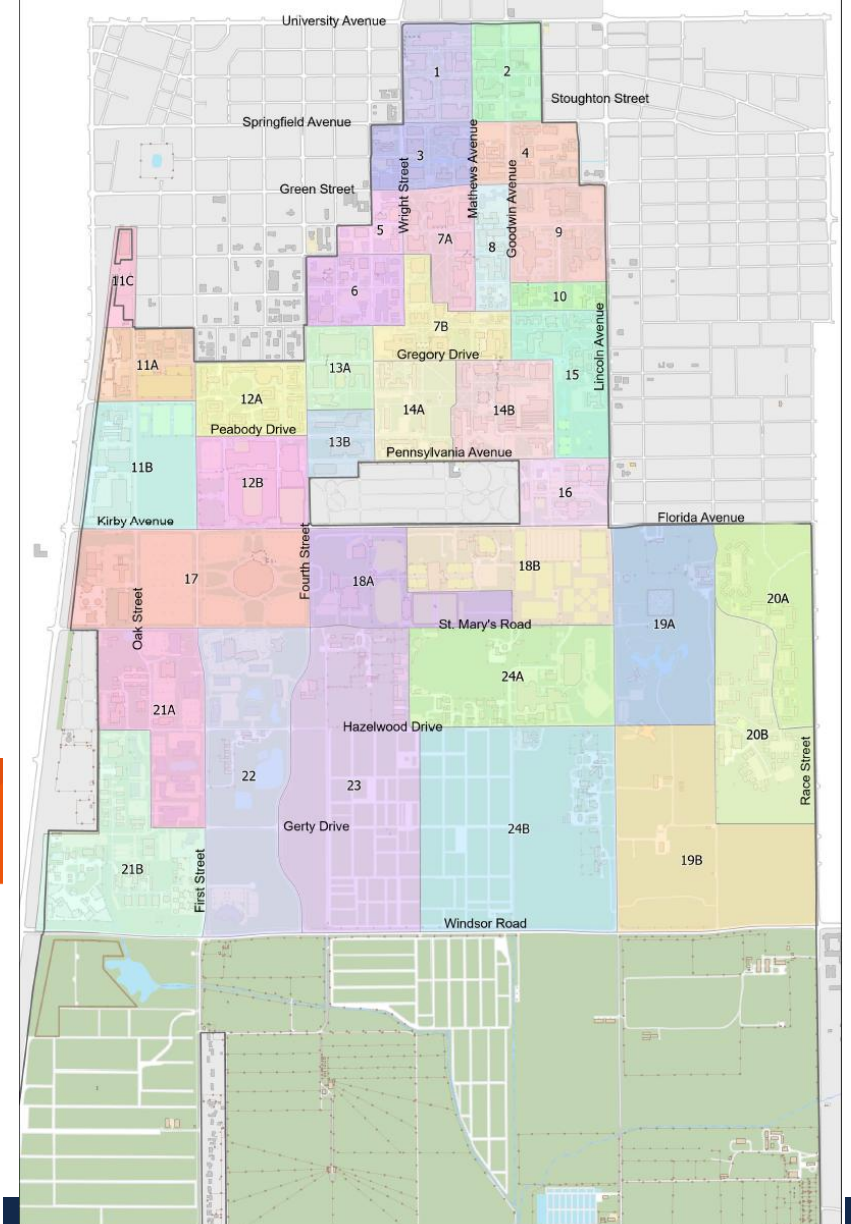
ALL BIKES COUNT 



**Volunteer for the
Campus Bicycle Census!**

**Tuesday, April 14
11 a.m.**

go.fs.illinois.edu/BikeCensus



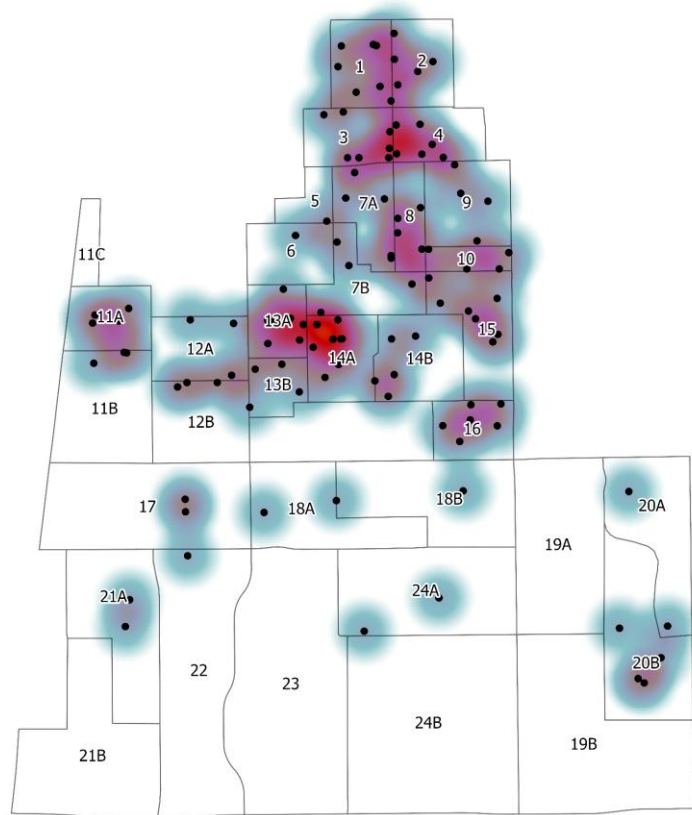
 Facilities & Services  **BIKE CENSUS AREAS MAP**



Facilities & Services
UNIVERSITY OF ILLINOIS URBANA-CHAMPAIGN

Inspiration • Innovation • Leadership • Perseverance • Agility

Heat Map of On-Rack Veos for Spring 2026 Bike Census



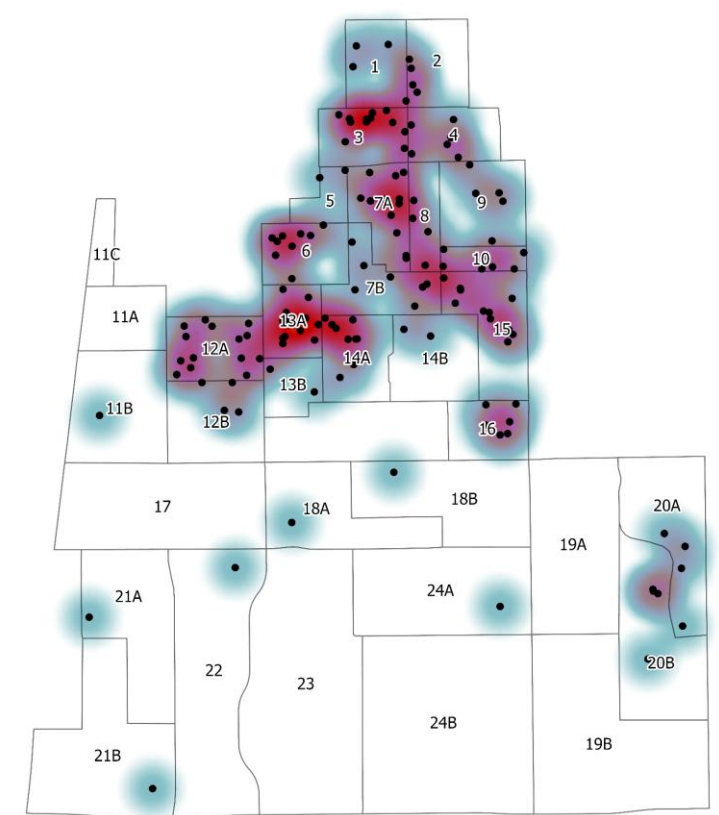
Heat Map Legend

- Bike_Census_Map_Areas
- Bike_Parking_2026_veos
- Sparse
- Dense

0 0.1 0.2 0.4 Miles



Heat Map of On-Rack E-bikes & E-scooters for Spring 2026 Bike Census

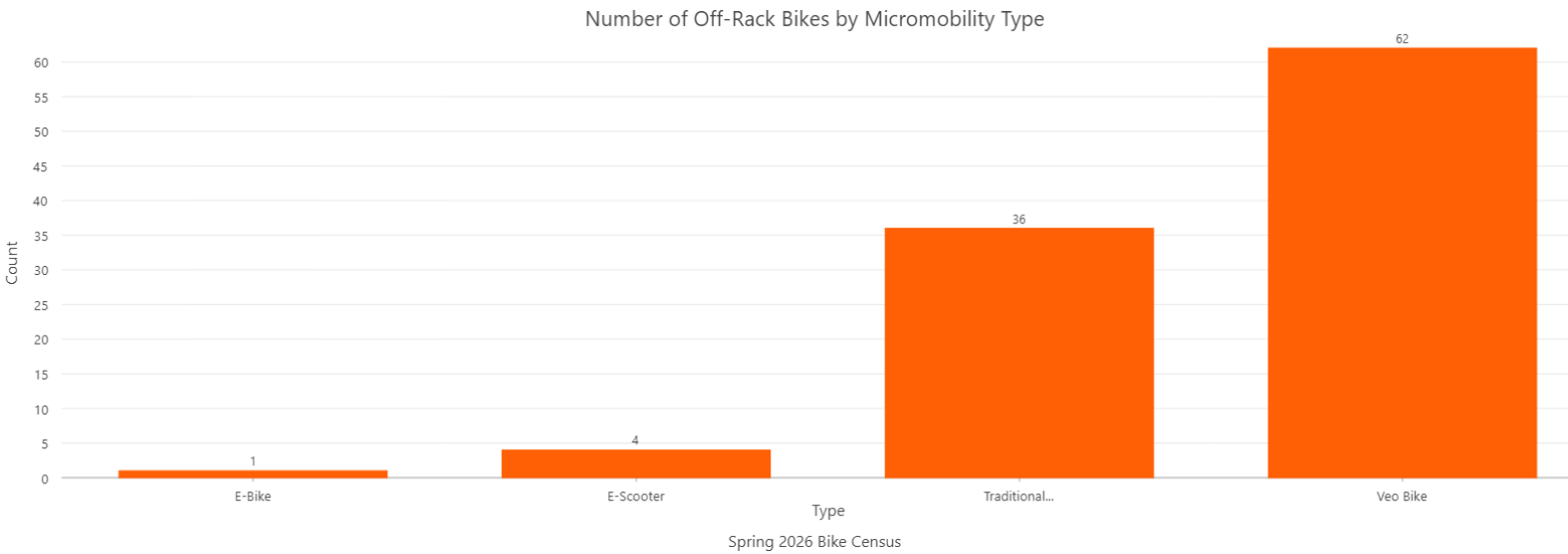


Heat Map Legend

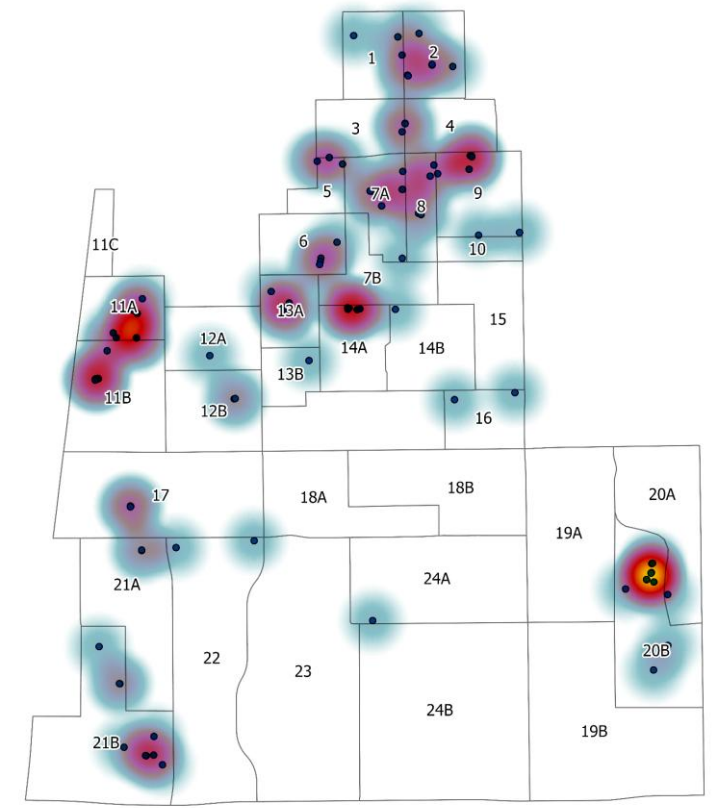
- Bike_Census_Map_Areas
- Bike_Parking_2026_ebik
- Sparse
- Dense

0 0.1 0.2 0.4 Miles





Heat Map of Off-Rack Bikes for Spring 2026 Bike Census



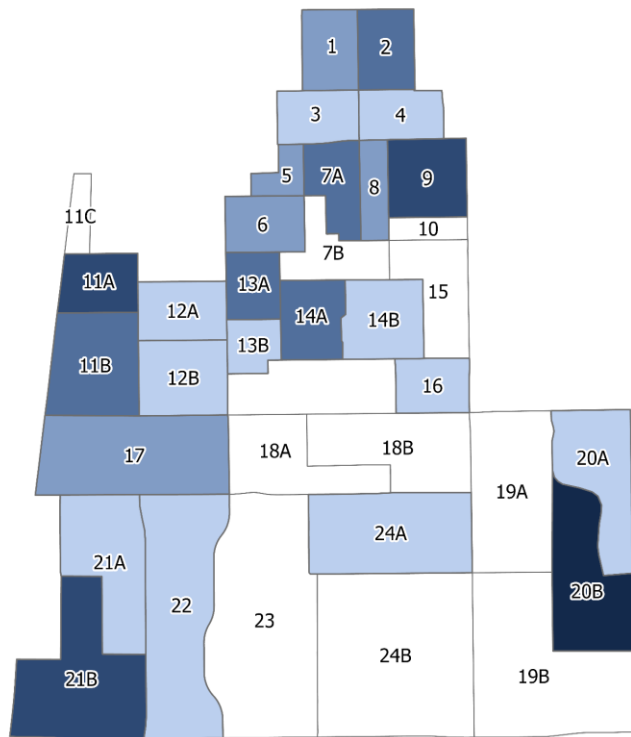
Heat Map Legend

- Sparse
- Dense
- Bike_Census_Map_Areas
- Off_Rack_Bike_2026

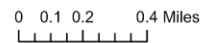
0 0.1 0.2 0.4 Miles



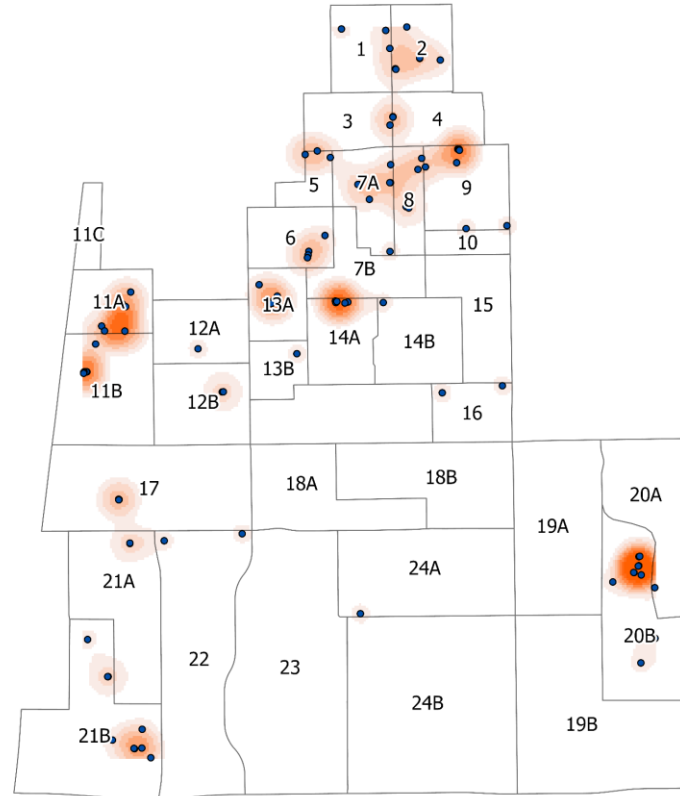
Off Rack Bikes per Zone for Spring 2026 Bike Census



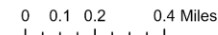
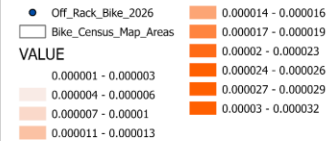
Off Rack Legend



Kernel Density Estimation of Off-Rack Bikes for Spring 2026 Bike Census With 500ft Radius



KDE Legend



Bike Safety Quiz

- <https://go.social.illinois.edu/bikesafetyquiz>
- Bike Safety Quiz for Adults and Kids (English and Spanish versions)
- These quizzes are education tools for adults, children, motorists, and truck/bus drivers on how to share the road safely

Adult Bike Safety Quiz – English

Adult Bike Safety Quiz – Spanish

Child Bike Safety Quiz – English

Child Bike Safety Quiz – Spanish

Motorist Driver's Education

Truck Driver

- Adult Bicyclist – for teens and adults
- Child Bicyclist – for 4th and 5th graders (or younger with adult help)
- Motorist/Drivers Ed – for motorists and student drivers
- Truck Driver – for drivers of buses and other large vehicles



SSC Funded Projects



SSC Funded Projects

- Shipping containers for bicycle storage – \$70,000
 - Purchased and installed seven 8' x 40' shipping containers
 - Installed hooks on one wall of each shipping containers
 - Each shipping container has a capacity of 45-50 bicycles
 - So far, we have spent nearly \$60,000
- Power and Ventilation for shipping containers – SSC awarded \$60,511
- Lorado Taft Path 4th to 6th – Construction – SSC awarded \$180,395.25
- Pilot Program for Outdoor Electric Chargers for E-Bikes and E-Scooters – SSC awarded \$96,000
- Sustainable Transportation Interns – SSC awarded \$27,000
 - Emily Repetowski is the current intern

19



Shipping Containers for bicycle storage



Shipping Containers for bicycle storage



21

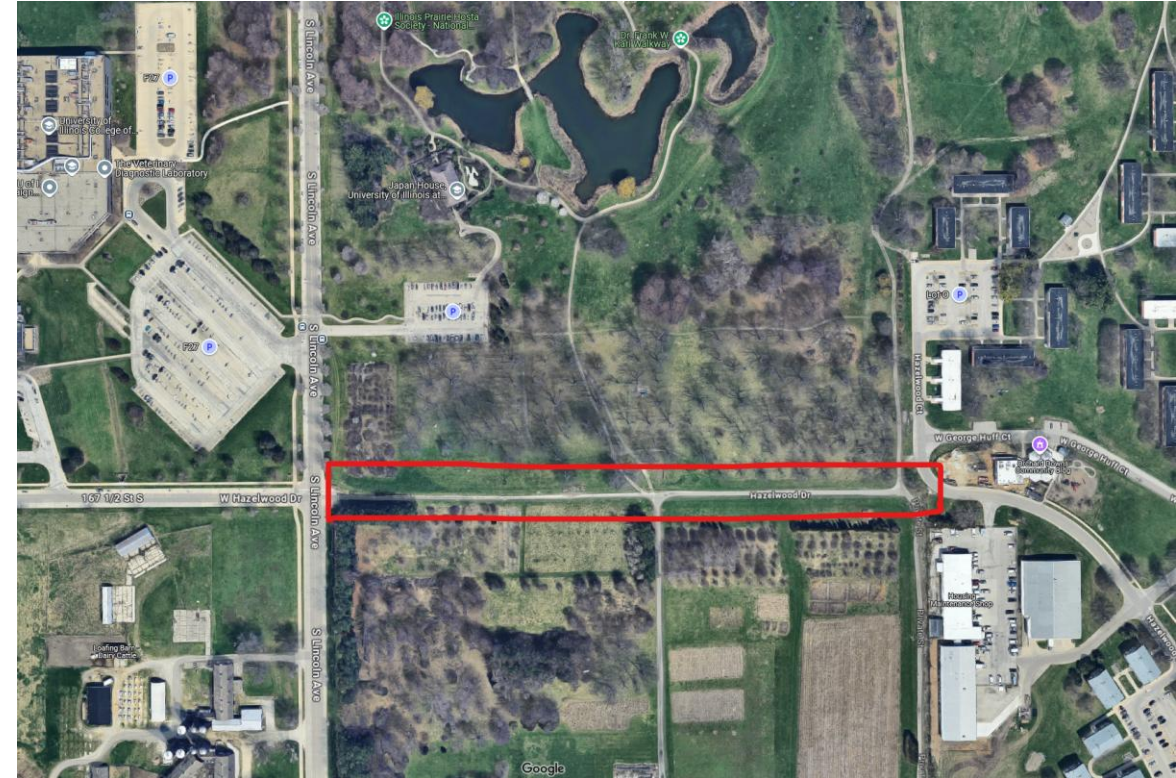


Infrastructure Updates



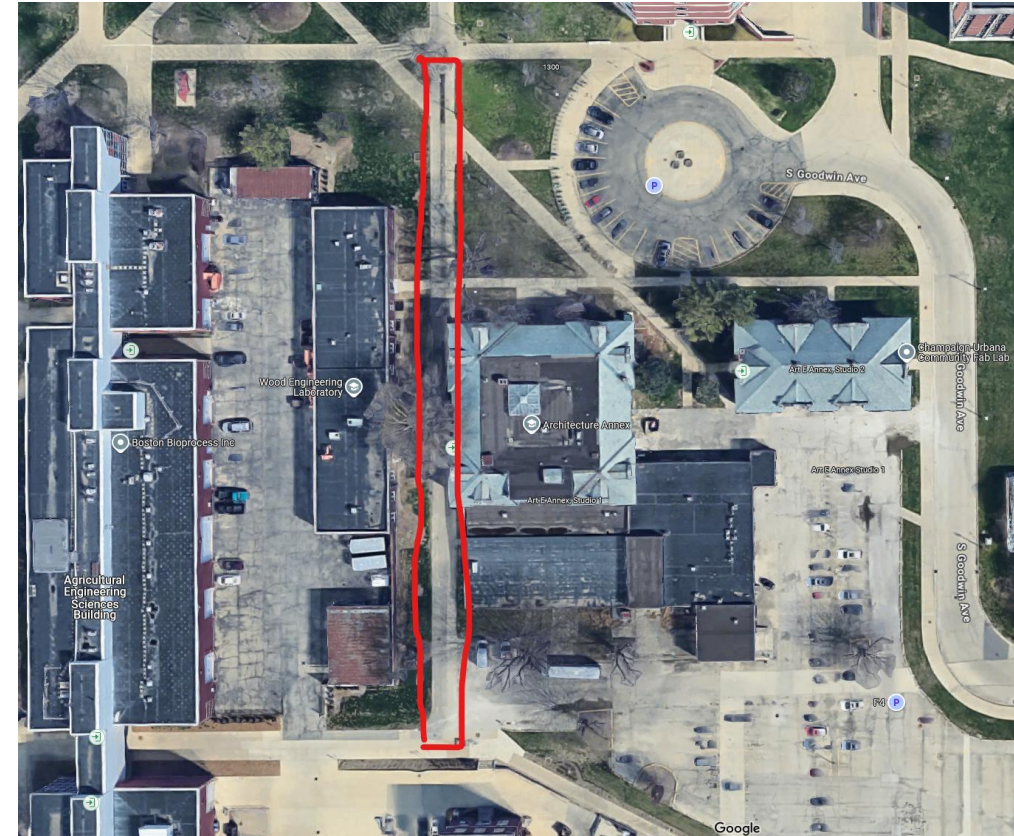
Hazelwood Dr Shared-Use Path Design

- Budget to complete the design work - \$50,000
- TERRA Engineering was hired to design this project
- 100% Construction Documents received in March 2026
- Design substantially completed
- Project will include lighting.
- Need to secure funding for construction.



South Quad N-S Shared-Use Path Design

- We will remove both the bike path and sidewalk
- Install one 10-12' wide shared use path to accommodate both bicycles and pedestrians
- Budget to complete the design work - \$100,000
- TERRA Engineering was hired to design this project
- 95% Construction Documents received in March 2026
- Design expected to complete in Spring 2026
- Need to secure funding for construction.



25



Lorado Taft Shared-Use Path between 4th and 6th Street

- Need to improve the capacity for the existing shared-use path.
- PSC hired to design this project
- The objective in the Campus Bicycle Master Plan and Campus Landscape Master Plan is to widen, repave, and relight the existing east/west bike path and pedestrian sidewalk, located within the former Laredo Taft road corridor between 4th Street and 6th Street, immediately south of Georges Huff Hall, Wymer Hall, and the Business Instructional Facility, and immediately north of the Seibel Design Center, for approximately 850LF of travel.
- Design is expected to complete by May 2026.
- Construction expected to complete in Summer 2026.

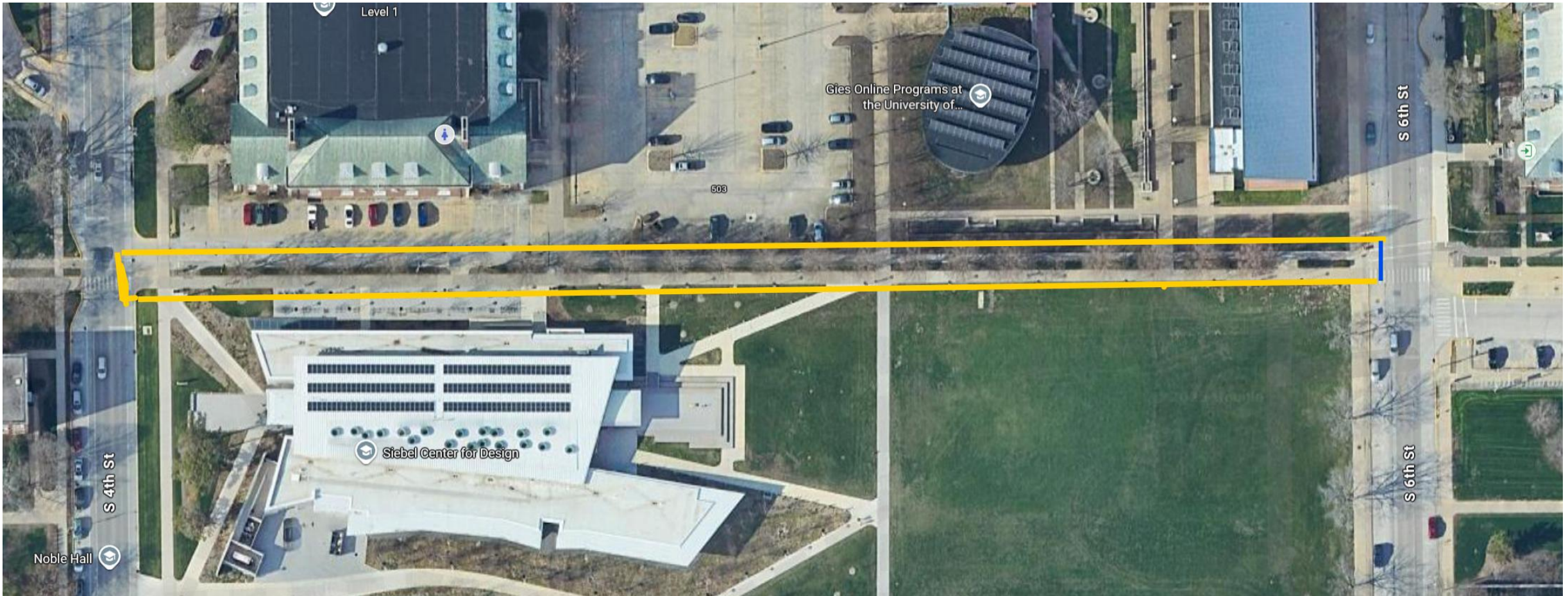
27



Facilities & Services

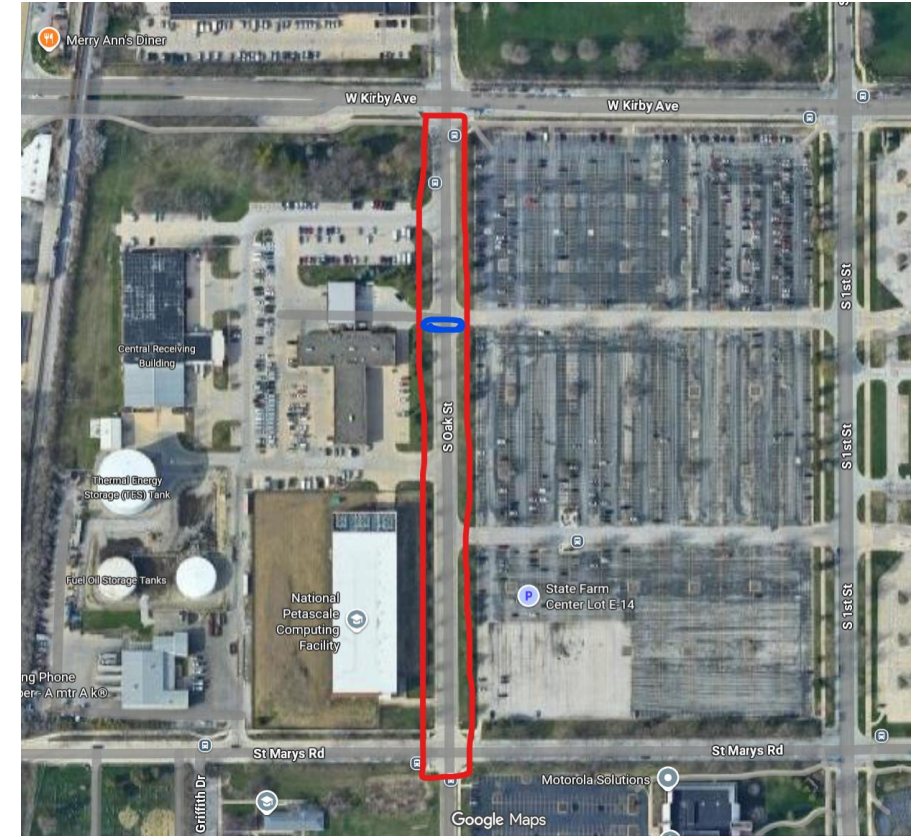
UNIVERSITY OF ILLINOIS URBANA-CHAMPAIGN

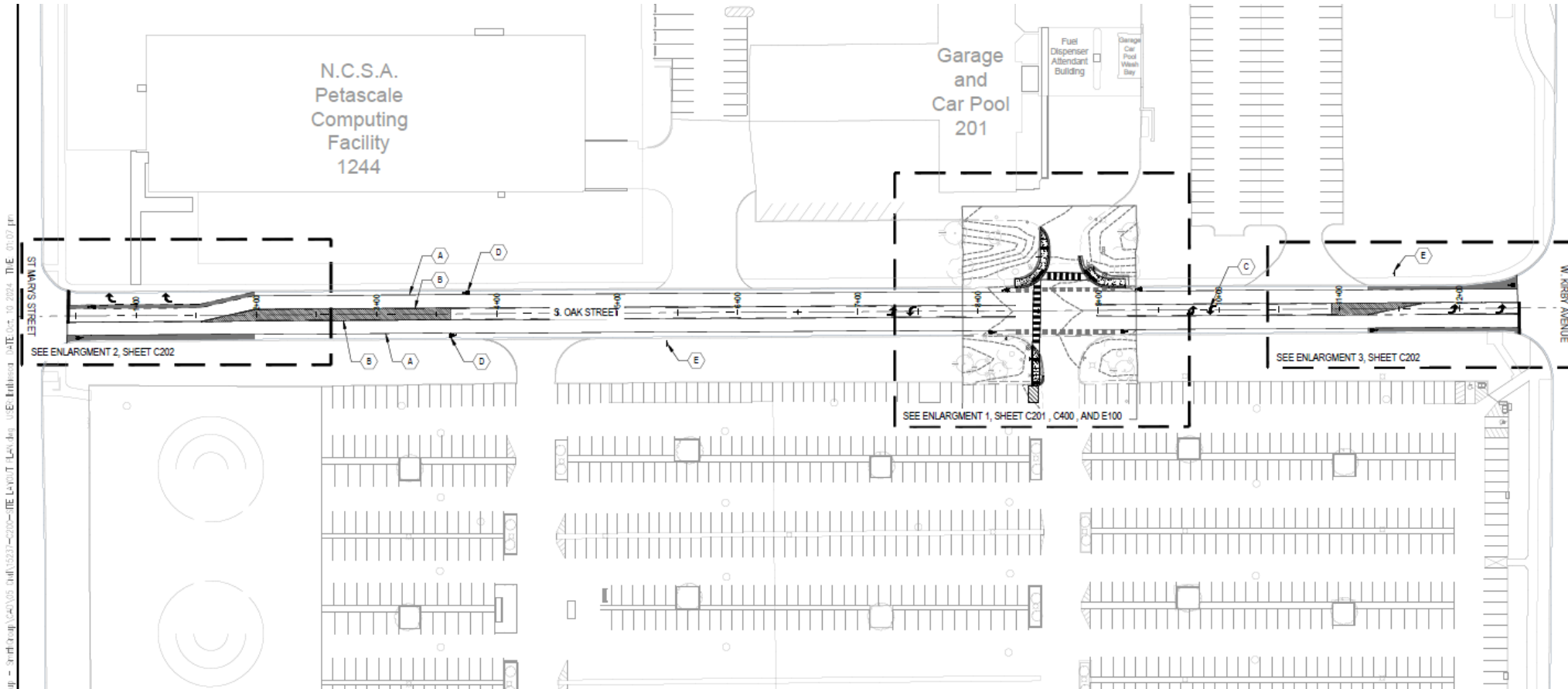
Inspiration • Innovation • Leadership • Perseverance • Agility



Oak St Complete Street & Sidewalk

- Oak Street from Kirby Ave and St. Mary's Road
- Curb cut and crosswalks at G&C project in construction completed in February 2026
- Road Diet –
 - 4 lanes to be transitioned to 3 lanes – 1 lane each side and 1 turn lane
 - Bike Lanes on both sides of the street
- Road Diet is proceeding and is expected to be completed in summer 2026.



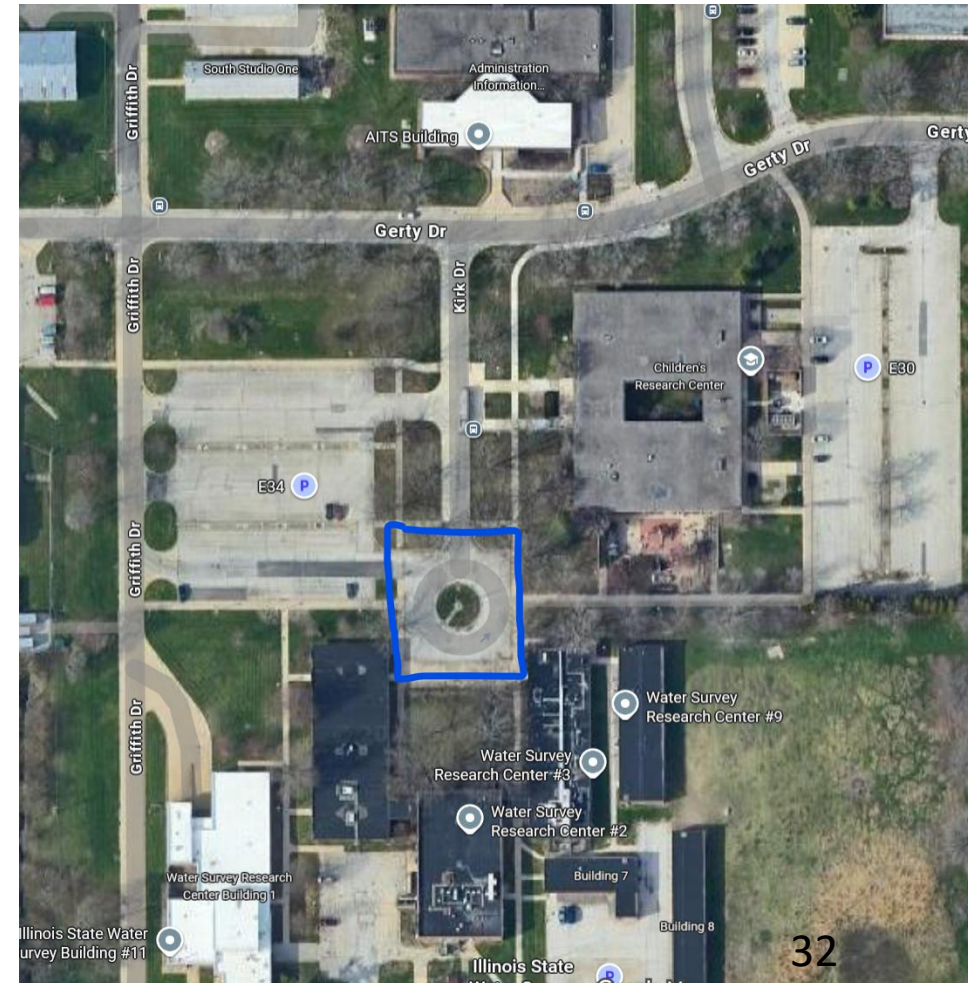


LEGEND	
(D)	METHYL METHACRYLATE PAVEMENT SYMBOL COLORIZATION (WHITE)
(E)	PROPOSED SIGN, W11-15, W16-9P LOCATE PER UIUC MTD SIGNAGE REQUIREMENTS. LOCATE IN FIELD WITH APPROVAL FROM UIUC, TYP.
	CONCRETE PAVEMENT
	CURB AND GUTTER
	FLUSH CURB AND GUTTER
	DETECTABLE WARNING STRIP
	CONTROL JOINT
	EXPANSION JOINT
	BOLLARD
	DASHED PAVEMENT MARKING
	SOLID LINE PAVEMENT MARKING
	DOUBLE LINE PAVEMENT MARKING
	STOP BAR PAVEMENT MARKING
	CROSSWALK PAVEMENT MARKING
	SINGLE POST SIGN
	RECTANGULAR RAPID FLASHING BEACON
	EXISTING PARKING SIGN
	DIRECTIONAL ARROW PAVEMENT MARKING
	BIKE LANE PAVEMENT MARKING
	STREET LIGHT

JH - Street Group (C400) 03.04.15.02.01-2000-11E LAYOUT (LAW) USE: Facilities DATE: Dec. 10, 2024. THE: 00.02 Rev.

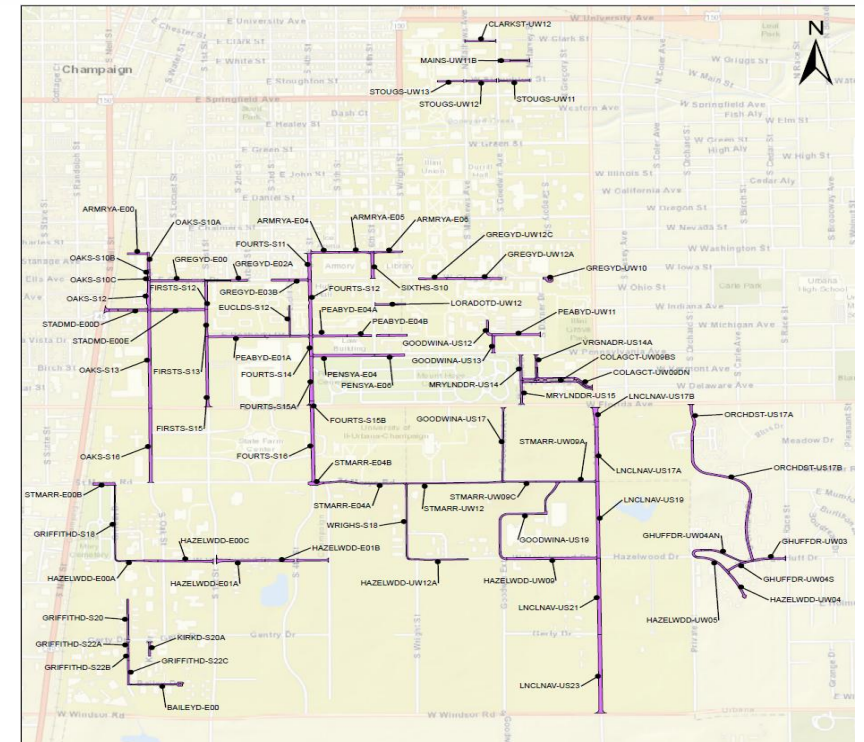
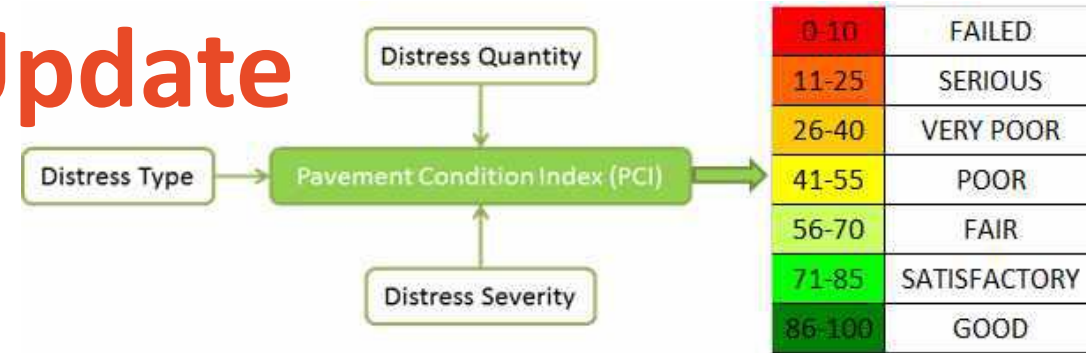
Kirk Dr circle drive

- Kirk Drive Reconstruction improvements will consist of full-depth removal and reconstruction of approximately 8,200 square feet of the circle drive at the south end of Kirk Drive.
- Sidewalk removal and replacement around the perimeter of the circle drive will be included as well.
- Portions of curb and sidewalks may be recommended for upgrades as necessary to meet the adjacent pavement improvements and to rectify any existing violations to current accessibility codes and standards.
- Design complete.
- Construction will be in-house. Scheduled for this summer.










Pavement Analysis Study Update

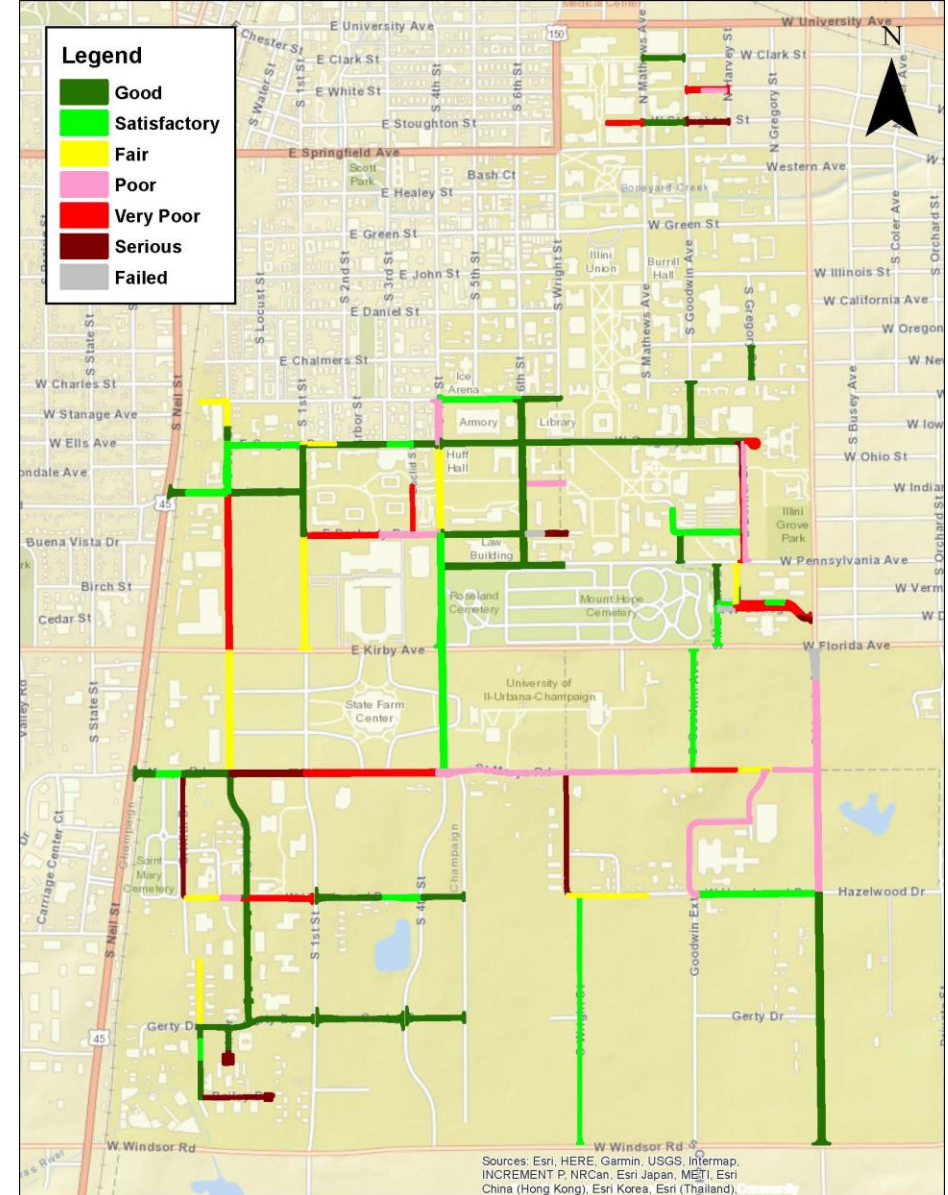
- Completed in December 2025
- Update the University PAVER™ database with work performed since the 2020 update for approximately 20 miles of roadways
- Conduct PCI surveys for University roads and update PAVER™ database using map and section list provided by the U of I
- The project included five budget scenarios.



PCI Results

PCI Range		Condition Category	
100	86	Good	
85	71	Satisfactory	
70	56	Fair	
55	41	Poor	
40	26	Very Poor	
25	11	Serious	
10	0	Failed	

**Network Area-Weighted
PCI = 68**



Pennsylvania Avenue from Lincoln Ave to City of Urbana Limits

- Reconstruction of Pennsylvania Ave from City Limits to Lincoln Ave.
- This project shall provide full-depth replacement of the pavement and base reconstruction including removals, grading, PCC pavement, PCC sidewalk improvements for ADA compliance, bike facilities improvements, PCC driveway pavement, curb and gutter, storm sewer improvements -as needed, drainage remediation, electrical for roadway lighting, pavement marking and roadway/pedestrian lighting.
- Design expected to complete in Spring 2026
- Construction expected in 2027.

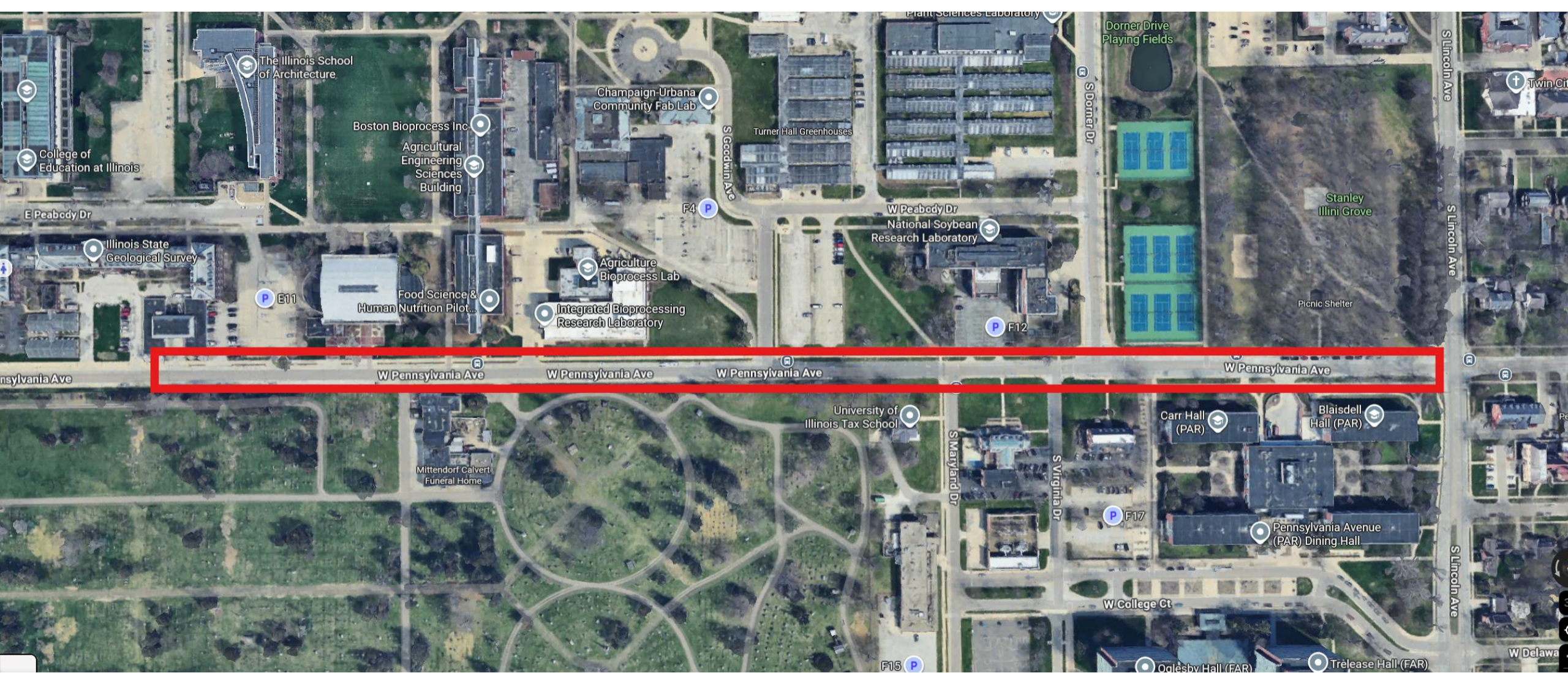
36



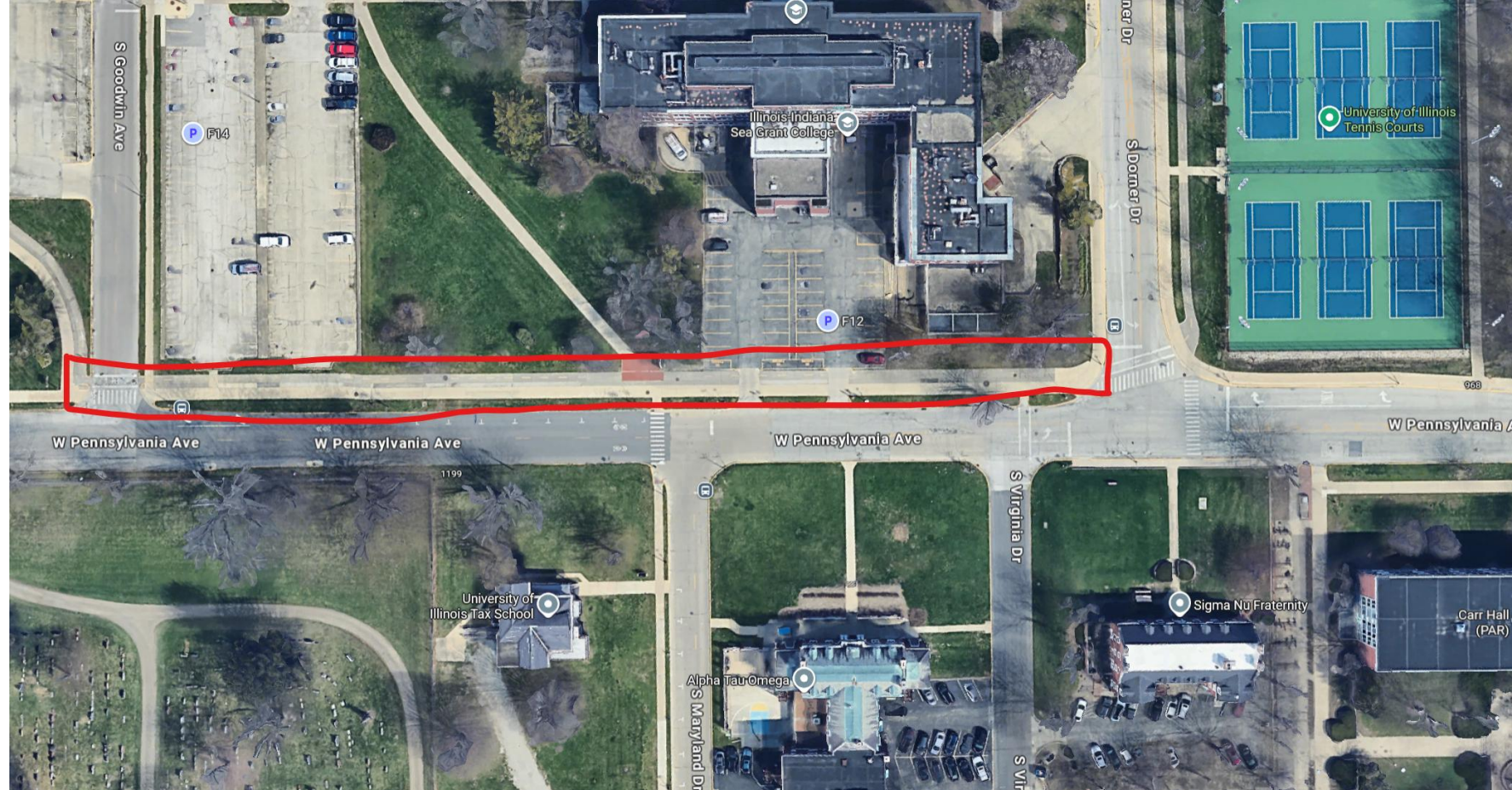
Facilities & Services

UNIVERSITY OF ILLINOIS URBANA-CHAMPAIGN

Inspiration • Innovation • Leadership • Perseverance • Agility



Removing a section of bike path.
The bikes will go on the street as
sharrows.



Accessibility Audit of Crosswalks & ADA Ramps

A Joint Master of Urban Planning Capstone

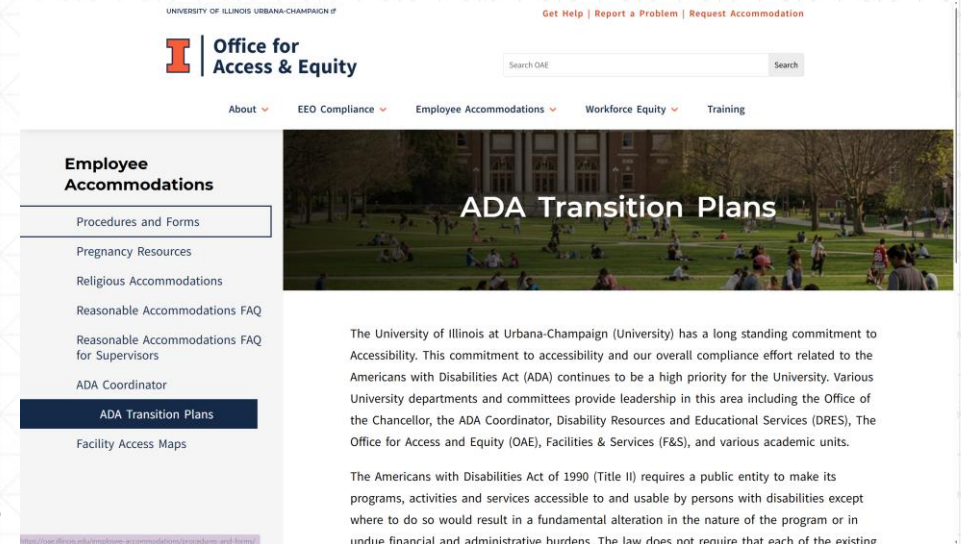
Emily Repetowski & Utsavi Shah

Dept of Urban & Regional Planning & F&S



Purpose

- Build off of the DeepWalks survey of campus sidewalks
 - Excluded crosswalks and ADA ramps
- Identify accessible and inaccessible building entrance ramps and campus crosswalks
- Visit these sites and record pavement faults, site characteristics, running slope, and cross slope.
- Help F&S identify future project sites & noncompliant sites



Project Timeline

- **August – November 2025:** Literature Review & Survey Creation
- **February 2026:** Survey Distribution
- **March 2026:** Survey & Site Analysis
- **April 2026:** Site Visits & Analysis
- **May 2026:** Final Report



Perceptions-based Accessibility Survey


- **Perceptions-based survey helped to guide our site visits in Spring 2026**
- Asks university-affiliated people to identify their **most accessible and least accessible** crosswalks & ADA ramps
- Asks respondents to describe the characteristics of the most and least accessible sites
- Digital accessibility review of the survey
- Reviewed by ADA coordinator, Sarthak, and Urban Planning Faculty
- Sent out to 3 newsletters, digital screens, physical signs, etc.
- 36 responses


Survey Results

Ramps

 **35%** Respondents used Ramp Entry

ARC, Huff Hall, Lincoln Hall, Davenport Hall **Most Accessible Ramps** 

 **Positive Features** Functional push plates, Conveniently located, Compliant ramp, No cracks or damage

Heavy Doors, Non functional or No Push Plate, Temporary Obstructions **Least Accessible Ramps and Barriers** 



"I wish the ramps were a little wider"

"The Davenport entrance has multiple entries, which makes it easier to maneuver around if there are barriers"



Crosswalks

Most Accessible Crosswalks:

1. Green St. & Wright St. - 8 mentions
2. Springfield Ave by Grainger Library Midblock - 4 mentions
3. 4th St. & Gregory St. - 3 mentions

Least Accessible Crosswalks:

1. Green St. Corridor - 3 mentions
2. 6th & Springfield - 3 mentions
3. All other responses - 1 mention

- 36 total responses & 32 unique crosswalk locations
- 36% of respondents reported using a mobility aid

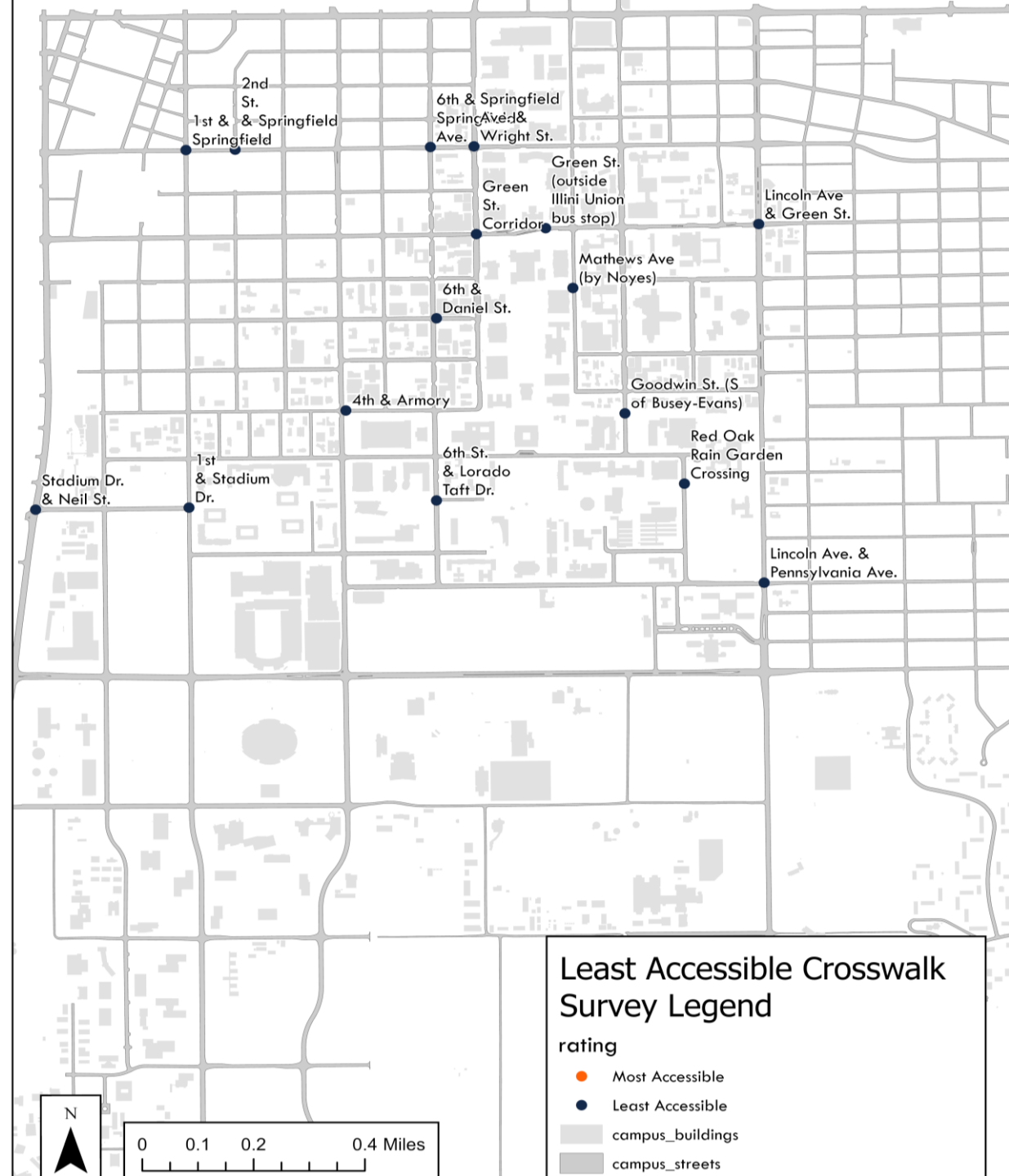


Site Selection Reasoning

Priority rankings integrate four factors:

- (1) survey mention frequency and qualitative severity;
- (2) field-observed non-slope conditions (signal absence, push plate status, pavement faults, obstructions);
- (3) presence of reported safety incidents; and
- (4) strategic location importance.

Using these 4 factors we selected 12 priority sites for survey and data collection.



ArcGIS FieldMaps Data Collection

- ADA Ramps: cross slope, running slope, ramp width, doorway width, ADA push button
- Crosswalks: cross slope, running slope, crosswalk markings, auditory signal
- Pavement faults - both

The screenshot shows the ArcGIS FieldMaps mobile application interface. At the top, there are three buttons: "Cancel", "Collect", and "Submit". The main title is "Survey Campus Crosswalks" with coordinates "40.102592°N 88.229867°W". Below the title are two buttons: "Take Photo" (with a camera icon) and "Attach" (with a paperclip icon). A white text box contains the instruction: "Please make sure to include a photo for **each** entry!". Below this is a section titled "Point type" with two options: "Pavement fault entry" and "Campus crosswalk entry". At the bottom, there is a prompt: "Select the appropriate entry type".



ADA Ramp Sites



Main Library



Krannert



Art Annex 2



Crosswalk Sites



Stadium Dr. & Neil St.



501 S. 6th St.



**Near Davenport Hall
on Nevada St.**



Results

Ramps

Building / Entrance	Run Slope (mean)	ADA $\leq 8.33\%$	Cross Slope (mean)	ADA $\leq 2.08\%$	Width (min)	ADA $\geq 36"$	Push Plate
Architecture Building	2.23%	PASS	0.13%	PASS	60"	PASS	Yes
David Kinley Hall	0.65%	PASS	0.30%	PASS	48"	PASS	Yes
Main Library (ADA Ramp)	2.38%	PASS	0.25%	PASS	36"	PASS- Less than Recommended	Yes
Illini Union (North)	3.45%	PASS	0.10%	PASS	64"	PASS	Yes
English/Henry Admin Building	1.77%	PASS	0.33%	PASS	38"	PASS	Yes
Huff Hall (SE Corner)	2.17%	PASS	0.20%	PASS	50"	PASS	Yes
Art Annex 2 (CUC Fab Lab)	No Ramp	FAIL	No Ramp	FAIL	No Ramp	FAIL	No push plate
Turner Hall	1.40%	PASS	0.30%	PASS	N/A	N/A	Yes
Animal Sciences Lab (ABL)	2.35%	PASS	0.25%	PASS	36"	PASS- Less than Recommended	N/A
Krannert Center	1.80%	PASS	0.44%	PASS	96"	PASS	Yes
Morrill Hall	1.60%	PASS	0.60%	PASS	40"	PASS	Yes
Noyes Laboratory	1.50%	PASS	0.30%	PASS	70"	PASS	N/A

Crosswalks

Location	Run Slope (mean)	ADA $\leq 8.33\%$	Cross Slope (mean)	ADA $\leq 2.08\%$	Pavement	Signal	Markings
6th St & Lorado Taft Dr	1.10%	PASS	1.10%	PASS	Good condition	No crosswalk signal	Clear & visible
Stadium Dr & 1st St (SW)	0.53%	PASS	0.57%	PASS	Good condition	No crosswalk signal	Clear & visible
Stadium Dr & Neil St	1.16%	PASS	1.79%	PASS	Good condition	Broken/partial signal	No — not visible
4th St & Armory Ave	1.25%	PASS	1.13%	PASS	Cracked sidewalk	No crosswalk signal	Somewhat visible
Green St Corridor	1.61%	PASS	1.10%	PASS	Variable	Signal present	Clear & visible
Red Oak Rain Garden	2.30%	PASS	0.15%	PASS	Fine	No crosswalk signal	Clear & visible
Lincoln Ave (Green-Penn)	1.75%	PASS	1.98%	PASS	Bricks missing	Signal present (quiet)	Somewhat visible
Goodwin St (S of Busey-Evans)	1.30%	PASS	0.05%	PASS	Good	No crosswalk signal	Clear & visible
Davenport Hall/Nevada St	2.25%	PASS	1.35%	PASS	Cracks in street	No crosswalk signal	Clear & visible
Springfield Ave & Wright St	1.38%	PASS	0.68%	PASS	Good condition	Signal present	Clear & visible
6th St & Springfield Ave	2.00%	PASS	0.30%	PASS	Cracked pavement	Broken/partial signal	Somewhat visible
501 S 6th St (Campustown)	2.70%	PASS	0.30%	PASS	Good	Broken/partial signal	No — not visible



Future Actions

ADA RAMPS

- **Short Term (<1 year):** Repair cracked rails + ramps, clear vegetation and debris.
- **Medium Length (1-2 years):** fix non-compliant sites, fix pavement defects, run a full-campus accessibility audit
- **Long term (3-5+ years):** Update U of I ADA plan

CROSSWALKS

- **Short Term (<1 year):** restripe crosswalks, clear vegetation and debris.
- **Medium Length (1-2 years):** fix non-compliant sites, fix pavement defects, run a full-campus accessibility audit
- **Long term (3-5+ years):** Update U of I ADA plan



Thank you!

Questions?



UNIVERSITY OF
ILLINOIS
URBANA-CHAMPAIGN

Bike at Illinois Website Overhaul



Bike at Illinois Website – Working Group

- Overhaul of the Bike at Illinois website
 - Content
 - Design
- The Working Group will meet monthly in FY27 for a 1-hour meeting
 - Analyze the website
 - Suggestions on how to make the website better for users
- F&S IT will make the changes





Bike Audit



Bike Audit

- Goal: Increase bikability on the Urbana-Champaign campus
- Campus Bicycle Master Plan 2024 Update objective to “Conduct a thorough audit of the bicycle network and infrastructure by FY27.”
- Identify areas that are good for bicycling
- Identify areas that need attention/improvement
- Collaborate with the Department of Urban & Regional Planning – Capstone Project
 - Design the audit similar to the Walkability Audit 2021-22

55



Community Updates



Thank you!

Contact F&S TDM at:

fandscampustdm@illinois.edu

Stacey DeLorenzo

Sarthak Prasad

57



Facilities & Services

UNIVERSITY OF ILLINOIS URBANA-CHAMPAIGN