

Student Sustainability Audit

By: Horticulture Club

Site Location: 1206 W. Nevada Street, Urbana, IL

Date: December 8th, 2011

The audit performed showed this building to be in good condition, with only minor fixes necessary. The audit checklist was completed as shown to the right and a basement plan is shown indicating the fixes deemed necessary to improve the environmental sustainability of the building. Bellow is a list of improvements that the above team recommends.

Buidling Improvements:

1. Insulate around basement door on interior side.
2. Tuck point gaps surrounding exterior of basement door
3. Caulk the brick mold on exterior basement door.
4. Caulk around all exterior windows.



All caulking surrounding exterior windows may be improved, however, no draft was present on the interior of the building.

Please direct any questions regarding the audit to :
 Kealan O'Neil
 oneil1@illinois.edu
 630-788-7273

Assessment Checklist	Team: Horticulture Club
Lighting	Notes
Check if outdoor lights are functional	Yes
Note type of outdoor light	CFL's
Are lights turned off when not n use?	Yes
What lights are left on overnight?	Outdoor Lights
Are light fixtures clean? Missing Shades? Or Broken?	No, Clean
Are there any incandescent bulbs that require CFL replacement?	No
Windows and Doors	Notes
Check for drafts, and quality of weather stripping	Good Quality
Note on blueprints areas in need of weather stripping	Basement Door, Main Entry Door
Water	Notes
Check if faucet aerators are installed, note where they are not	Yes
Check if any toilets leak or run constantly	No
Check if boiler pipes are insulated	No Boiler
Refrigerator/Freezer	Notes
Check brand/model of refrigerator, and Kw it takes	Whirlpool ET8GHMXTLTO 60Hz/150V
Is the freezer a top mount or side-by-side?	Top Mount
Does freezer have an ice/water dispenser on door?	No
Note temperature of fridge and freezer	Setting 3/ Cold
Check if gaskets are tight	Bottom Not Tight
Is it an EPA energy Star appliance?	No
Are any mini-fridges used? Note number	No
do any have an interior mounted freezer?	None
Note cubic feet of mini fridges	0
Electronics	Notes
Which Electronics are left on, or in sleep mode overnight?	Computer sleep mode, refrigerator, printer
Are they unplugged when not in use?	No
Note if power Strips are used	Yes
Are power strips unplugged when not in use?	No
Use Kill-A-Watt meter to determine energy usage of electronics	List On Following Page
Check for space heaters, and note locations	None
Air Ducts an Air System	Notes
Check if air vents are obstructed	Vents in man room covered by furniture
Note if vents are clean	Yes
Ask if filters has been changed	
Find out its schedule of replacement, and who is responsible	

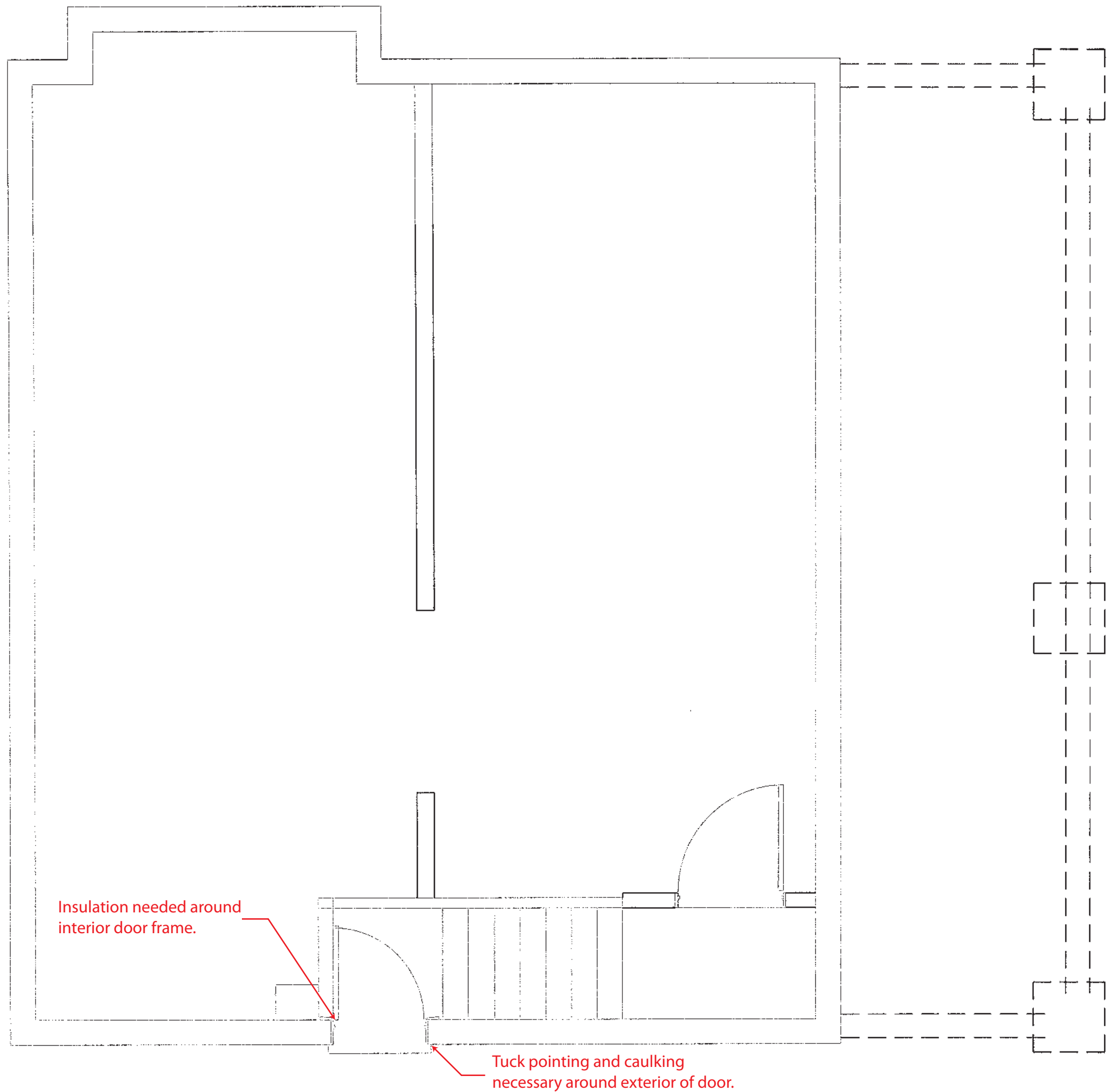
Electronics	Watts
1st Floor T. V.	62
Fireplace Lamp	22
Lamp under T. V.	19
Coffee Maker	627
Microwave	1100



Basement door requiring caulk and tuck pointing



Close up of required tuck pointing areas



BASEMENT PLAN

1/4" = 1'-0"