

CAMPUS WALKWAY LIGHTING

NATIONAL SOYBEAN RESEARCH CENTER
 BUILDING NO. 0124
 1101 WEST PEABODY DRIVE, URBANA IL

ILLINI GROVE
 BUILDING NO. 0179
 905 WEST PENNSYLVANIA AVENUE, URBANA IL

PROJECT CONTACTS:

MANAGEMENT ENGINEER: NORTH ZONE
 KRISTINE M. CHALIFOUX, LEED AP ph. 217.244.1315
 1501 S. OAK ST., ROOM 132
 CHAMPAIGN, IL
 kmchalif@illinois.edu

ELECTRICAL ENGINEER:
 BRIAN C. FINET, PE, LEED AP ph. 217.265.9438
 1501 S. OAK ST., ROOM 131
 CHAMPAIGN, IL
 bcfinet@illinois.edu

LEGEND

- [] - Not included in Sheet Set
- [/] - Included in Issued Set
- [X] - Issued with Changes

INDEX OF SHEETS

	SD	IFP
G-001 COVER SHEET	/	/
E-100 PARTIAL SITE PLAN - WALKWAY LIGHTING - NSRC	/	/
E-101 PARTIAL SITE PLAN - WALKWAY LIGHTING - ILLINI GROVE	/	/
E-201 PHOTOMETRIC PLAN	/	/
E-500 ELECTRICAL DETAILS	/	/

ILLINOIS

Facilities & Services
 ENGINEERING AND CONSTRUCTION SERVICES / ENGINEERING DESIGN
 Physical Plant Service Building
 1501 S. Oak St., Champaign, IL 61820
 General Information: 217.333.0697

CAMPUS WALKWAY LIGHTING

NATIONAL SOYBEAN RESEARCH CENTER
 BUILDING NO. 0124
 1101 W PEABODY DRIVE, URBANA

IFP

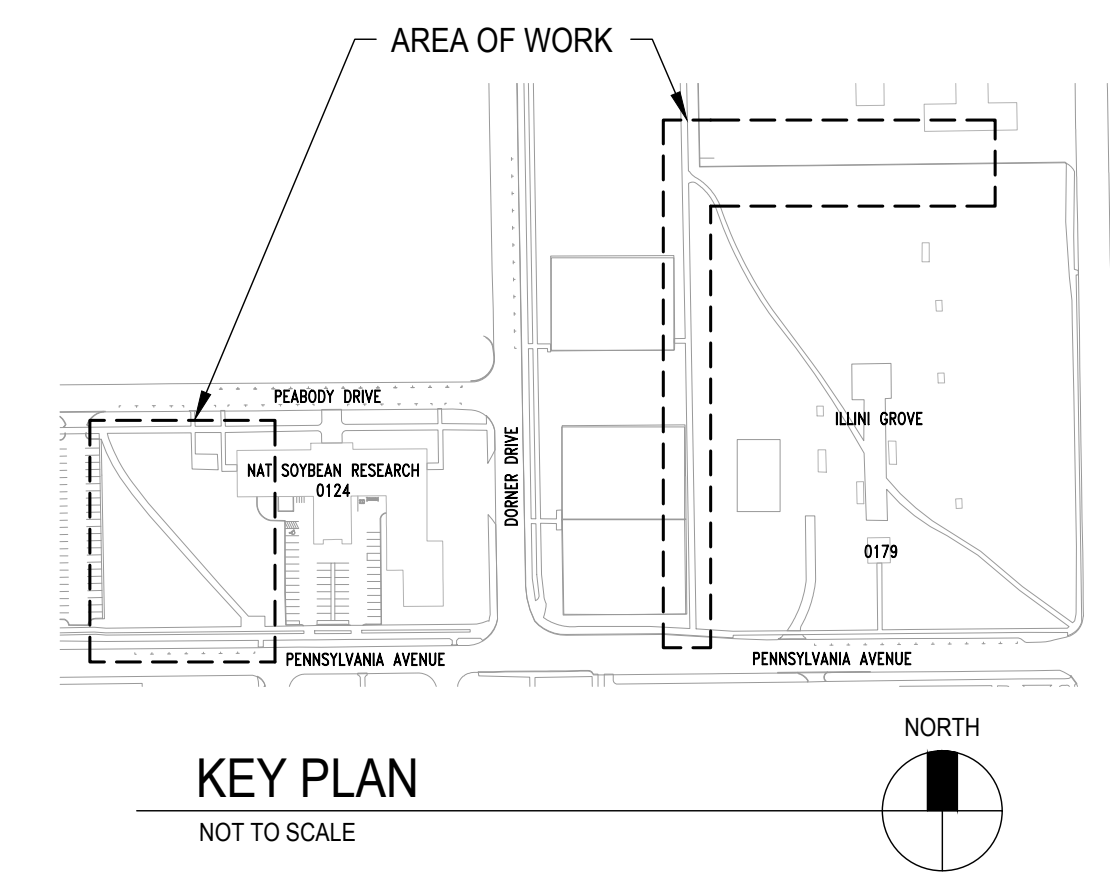
AS-BUILT REQUIRED
 PROVIDE AS-BUILT DRAWING OF THIS PLAN REFLECTING ACTUAL INSTALLATION TO THE PROJECT COORDINATOR FOR PROJECT CLOSEOUT AND PAYMENT.

#	Date	Revision	Description
1	25AUG17	ISSUED FOR PRICING	

COVER SHEET

G-001

of 1 sheets

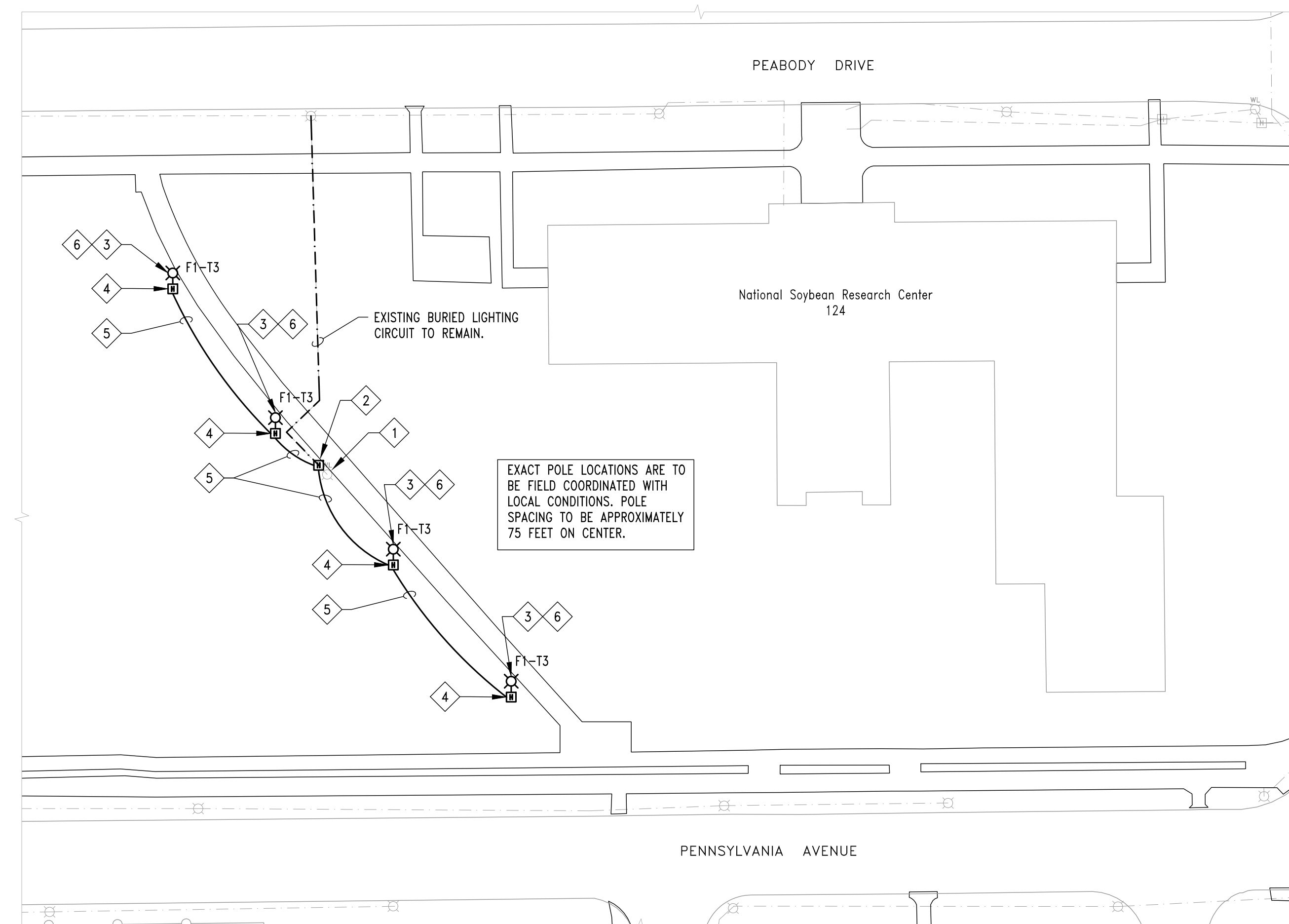


KEY PLAN
 NOT TO SCALE

C:\Projects\Campus Lighting\ACES 480\00_CAD\0124 Campus Walkway Lighting.dwg, 8/25/2017 3:15:57 PM, bcfnet

ELECTRICAL KEYED NOTES:

- 1 REMOVE EXISTING FIXTURE, POLE, AND BASE.
- 2 INTERCEPT EXISTING BURIED LIGHTING CIRCUIT AND INSTALL NEW GRADE BOX.
- 3 PROVIDE NEW LIGHT FIXTURE ON 14 FOOT POLE WITH CONCRETE BASE. SEE DETAILS 1 AND 3 ON SHEET E-500.
- 4 PROVIDE GRADE BOX AND CONDUIT TO POLE MOUNTED LIGHT FIXTURE.
- 5 EXTEND EXISTING LIGHTING CIRCUIT WITH 2#6 & #6 GROUND IN BURIED 1" PVC CONDUIT.
- 6 PROVIDE PHOTOCELL IN FIXTURE'S PHOTOCELL RECEPTACLE. INTERMATIC LED4536SC OR APPROVED EQUAL.



1 PARTIAL SITE PLAN - WALKWAY LIGHTING - NSRC

0 20' 40' 80'

SCALE: 1" = 40'

NORTH

ILLINOIS

Facilities & Services
 ENGINEERING AND CONSTRUCTION SERVICES / ENGINEERING DESIGN
 Physical Plant Service Building
 1501 S. Oak St., Champaign, IL 61820
 General Information: 217.333.0697

CAMPUS WALKWAY LIGHTING

NATIONAL SOYBEAN RESEARCH CENTER
 BUILDING NO. 0124
 1101 W PEABODY DRIVE, URBANA

IFP

AS-BUILT REQUIRED
 PROVIDE AS-BUILT DRAWING OF THIS PLAN REFLECTING ACTUAL INSTALLATION TO THE PROJECT COORDINATOR FOR PROJECT CLOSEOUT AND PAYMENT.

#	Date	Revision Description
1	25AUG17	ISSUED FOR PRICING

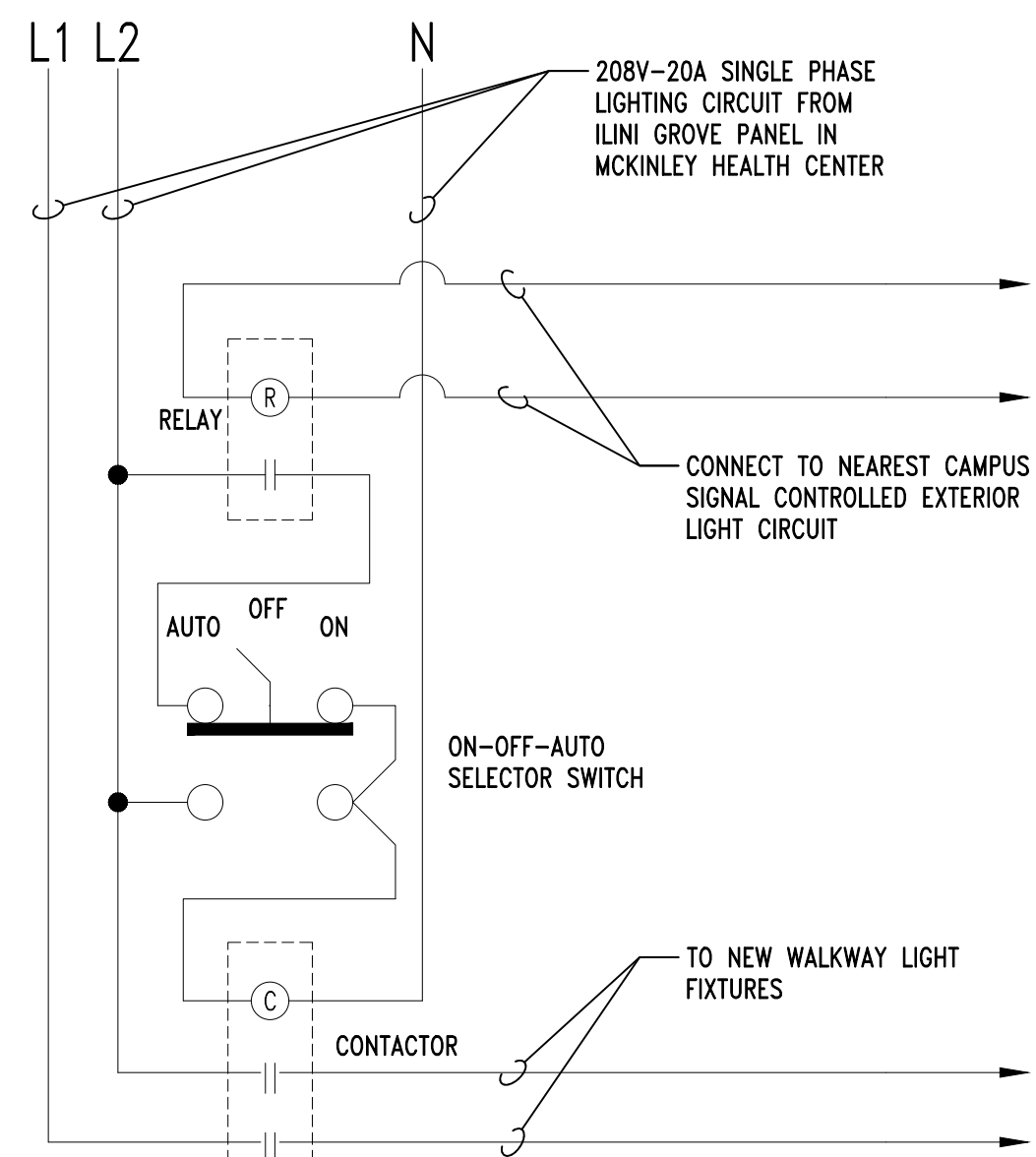
ES W/O:	10530141	Date:	25 AUG 2017
Reviewed:	BCF	Drawn:	KLC

PARTIAL SITE PLAN
 WALKWAY LIGHTING
 NSRC

E-100

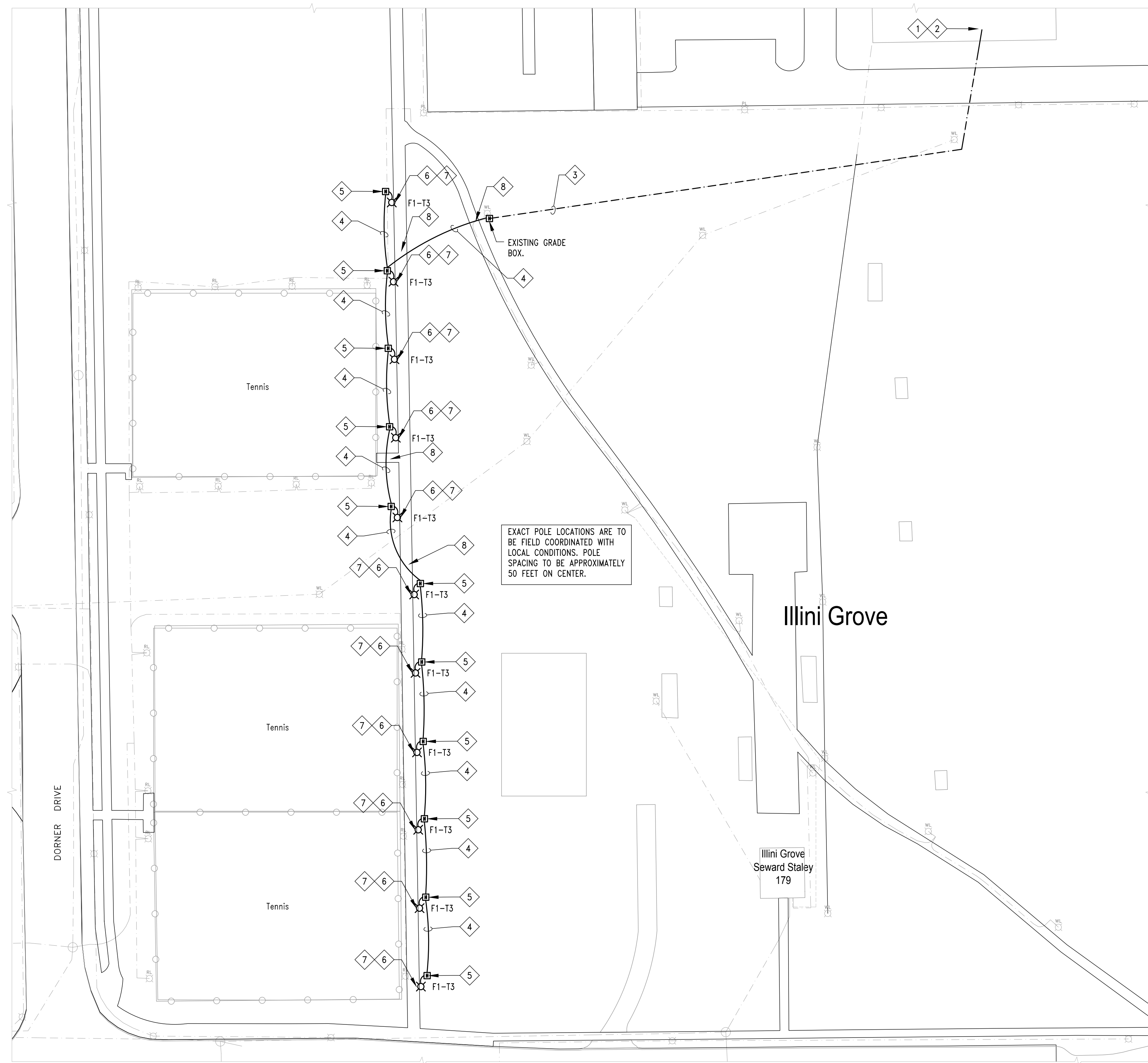
ELECTRICAL KEYED NOTES:

- 1 PROVIDE NEW 2P-20A CIRCUIT BREAKER IN EXISTING "ILLINI GROVE" PANEL IN LOWER LEVEL OF MCKINLEY HEALTH SERVICE BUILDING.
- 2 PROVIDE NEW LIGHTING CONTROL CONTACTOR, SELECTOR SWITCH AND CONTROL RELAY IN LOWER LEVEL ELECTRICAL CLOSET OF MCKINLEY HEALTH SERVICE BUILDING. SEE DIAGRAM ON THIS SHEET.
- 3 PROVIDE 2 #6 & #6 GROUND THROUGH EXISTING CONDUITS TO NEW BREAKER IN THE ILLINI GROVE PANEL IN THE BASEMENT OF MCKINLEY HEALTH CENTER BUILDING.
- 4 EXTEND NEW LIGHTING CIRCUIT WITH 2#6 & #6 GROUND IN BURIED 1" PVC CONDUIT.
- 5 PROVIDE GRADE BOX AND CONDUIT TO POLE MOUNTED LIGHT FIXTURE.
- 6 PROVIDE NEW LIGHT FIXTURE ON 8 FOOT POLE WITH CONCRETE BASE. SEE DETAILS 2 AND 3 ON SHEET E-500.
- 7 PROVIDE SHORTING CAP IN FIXTURE'S PHOTOCELL RECEPTACLE. INTERMATIC K4500 OR APPROVED EQUAL.
- 8 PROVIDE 2" PVC SLEEVE BORED BELOW SIDEWALK. EXTEND A MINIMUM OF 1 FOOT BEYOND PAVING AT LEAST 24" BELOW GRADE.



**2 LIGHTING CONTROL
NEW ILLINI GROVE WALKWAY FIXTURES**
NO SCALE

- GENERAL NOTES:**
- RELAY: 1P-20A, CONTINUOUSLY RATE COIL, FIELD VERIFY COIL VOLTAGE TO MATCH AVAILABLE EXISTING CIRCUIT. NEMA 1 ENCLOSURE, SQUARE D# CLASS 8501R OR EQUAL.
 - SELECTION SWITCH: ON-OFF-AUTO CONFIGURATION CONTACTS. NEMA 1 ENCLOSURE SQUARE D# CLASS 9001 OR EQUAL.
 - CONTACTOR: 2 POLE - 30A, 120V RATE COIL IN NEMA 1 ENCLOSURE, SQUARE D# 8903-LG20V02 OR EQUAL.



1 PARTIAL SITE PLAN - WALKWAY LIGHTING - ILLINI GROVE
SCALE: 1" = 40'

ILLINOIS
Facilities & Services
ENGINEERING AND CONSTRUCTION SERVICES / ENGINEERING DESIGN
Physical Plant Service Building
1501 S. Oak St., Champaign, IL 61820
General Information: 217.333.0697

CAMPUS WALKWAY LIGHTING
NATIONAL SOYBEAN RESEARCH CENTER
BUILDING NO. 0124
1101 W PEABODY DRIVE, URBANA

IFP

AS-BUILT REQUIRED
PROVIDE AS-BUILT DRAWING OF THIS PLAN REFLECTING ACTUAL INSTALLATION TO THE PROJECT COORDINATOR FOR PROJECT CLOSEOUT AND PAYMENT.

#	Date	Revision Description
1	25AUG17	ISSUED FOR PRICING

ES W/O:	10530141	Date:	25 AUG 2017
Reviewed:	BCF	Drawn:	KLC

PARTIAL SITE PLAN
WALKWAY LIGHTING
ILLINI GROVE

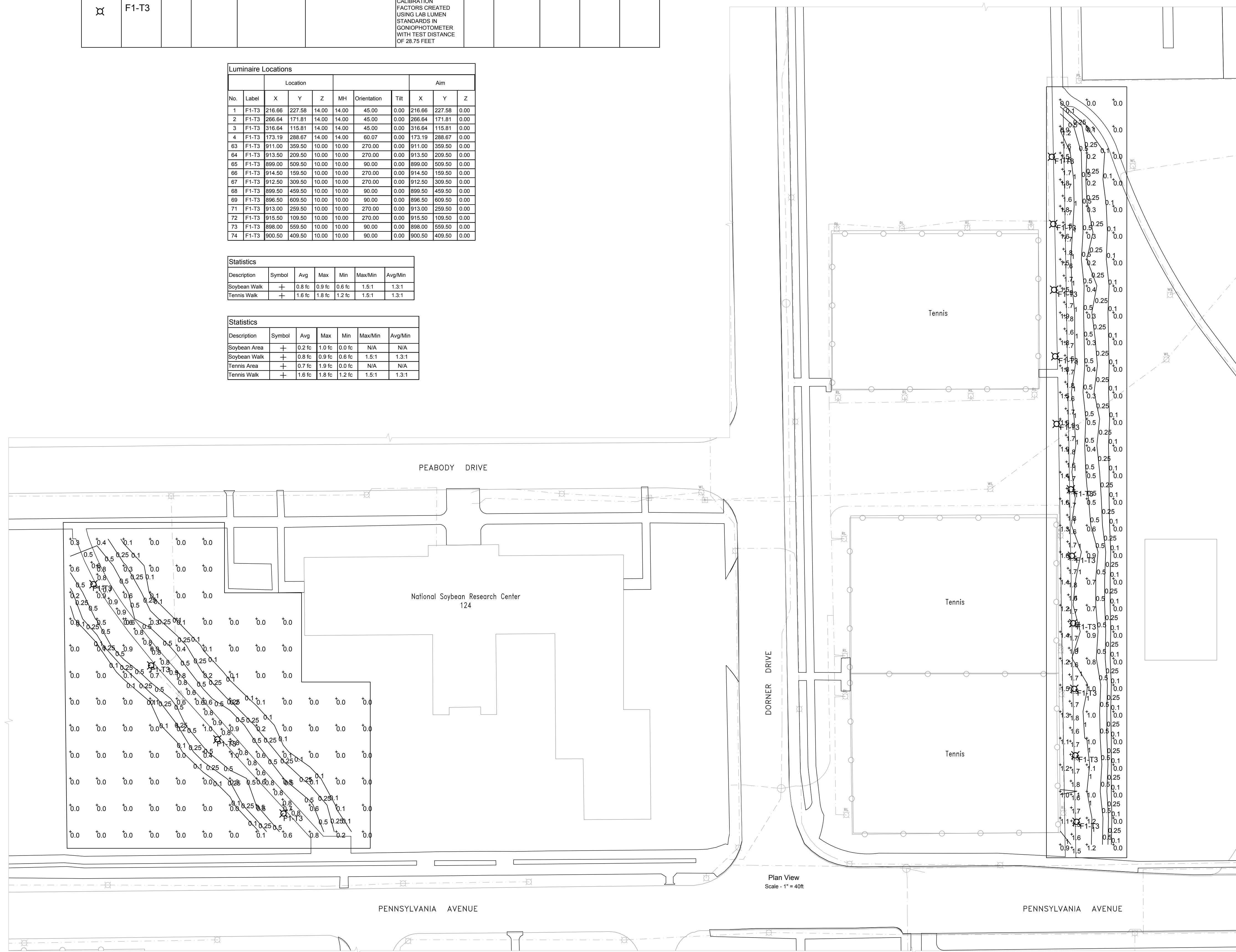
E-101
of 4 sheets

Schedule											
Symbol	Label	QTY	Manufacturer	Catalog Number	Description	Lamp	Number Lamps	Filename	Lumens per Lamp	LLF	Wattage
⊗	F1-T3	15	EATON - INVUE (FORMER COOPER LIGHTING)	MSA-E01-LED-E1-T3	MESA DECORATIVE LED LUMINAIRE (1) LIGHTBARS WITH ACCU-LED OPTICS - TYPE 3	(21) 4000K CCT, 70 CRI LED ABSOLUTE PHOTOMETRY IS BASED ON CALIBRATION FACTORS CREATED USING LAB LUMEN STANDARDS IN GONIPHOTOMETER WITH TEST DISTANCE OF 28.75 FEET	21	MSA-E01-LED-E1-T3.ies	118	0.9	24.7

Luminaire Locations										
No.	Label	X	Y	Z	MH	Orientation	Tilt	X	Y	Z
1	F1-T3	216.66	227.58	14.00	14.00	45.00	0.00	216.66	227.58	0.00
2	F1-T3	266.64	171.81	14.00	14.00	45.00	0.00	266.64	171.81	0.00
3	F1-T3	316.64	115.81	14.00	14.00	45.00	0.00	316.64	115.81	0.00
4	F1-T3	173.19	288.67	14.00	14.00	60.07	0.00	173.19	288.67	0.00
63	F1-T3	911.00	359.50	10.00	10.00	270.00	0.00	911.00	359.50	0.00
64	F1-T3	913.50	209.50	10.00	10.00	270.00	0.00	913.50	209.50	0.00
65	F1-T3	899.00	509.50	10.00	10.00	90.00	0.00	899.00	509.50	0.00
66	F1-T3	914.50	159.50	10.00	10.00	270.00	0.00	914.50	159.50	0.00
67	F1-T3	912.50	309.50	10.00	10.00	270.00	0.00	912.50	309.50	0.00
68	F1-T3	899.50	459.50	10.00	10.00	90.00	0.00	899.50	459.50	0.00
69	F1-T3	896.50	609.50	10.00	10.00	90.00	0.00	896.50	609.50	0.00
71	F1-T3	913.00	259.50	10.00	10.00	270.00	0.00	913.00	259.50	0.00
72	F1-T3	915.50	109.50	10.00	10.00	270.00	0.00	915.50	109.50	0.00
73	F1-T3	898.00	559.50	10.00	10.00	90.00	0.00	898.00	559.50	0.00
74	F1-T3	900.50	409.50	10.00	10.00	90.00	0.00	900.50	409.50	0.00

Statistics						
Description	Symbol	Avg	Max	Min	Max/Min	Avg/Min
Soybean Walk	+	0.8 fc	0.9 fc	0.6 fc	1.5:1	1.3:1
Tennis Walk	+	1.6 fc	1.8 fc	1.2 fc	1.5:1	1.3:1

Statistics						
Description	Symbol	Avg	Max	Min	Max/Min	Avg/Min
Soybean Area	+	0.2 fc	1.0 fc	0.0 fc	N/A	N/A
Soybean Walk	+	0.8 fc	0.9 fc	0.6 fc	1.5:1	1.3:1
Tennis Area	+	0.7 fc	1.9 fc	0.0 fc	N/A	N/A
Tennis Walk	+	1.6 fc	1.8 fc	1.2 fc	1.5:1	1.3:1



1 PARTIAL SITE PLAN - WALKWAY LIGHTING
 SCALE: 1" = 40'

ILLINOIS
Facilities & Services
 ENGINEERING AND CONSTRUCTION SERVICES / ENGINEERING DESIGN
 Physical Plant Service Building
 1501 S. Oak St., Champaign, IL 61820
 General Information: 217.333.0697

CAMPUS WALKWAY LIGHTING
 NATIONAL SOYBEAN RESEARCH CENTER
 BUILDING NO. 0124
 1101 W PEABODY DRIVE, URBANA

IFP		
#	Date	Revision Description
1	25AUG17	ISSUED FOR PRICING

PHOTOMETRIC
 SITE PLAN
 WALKWAY LIGHTING

E-201

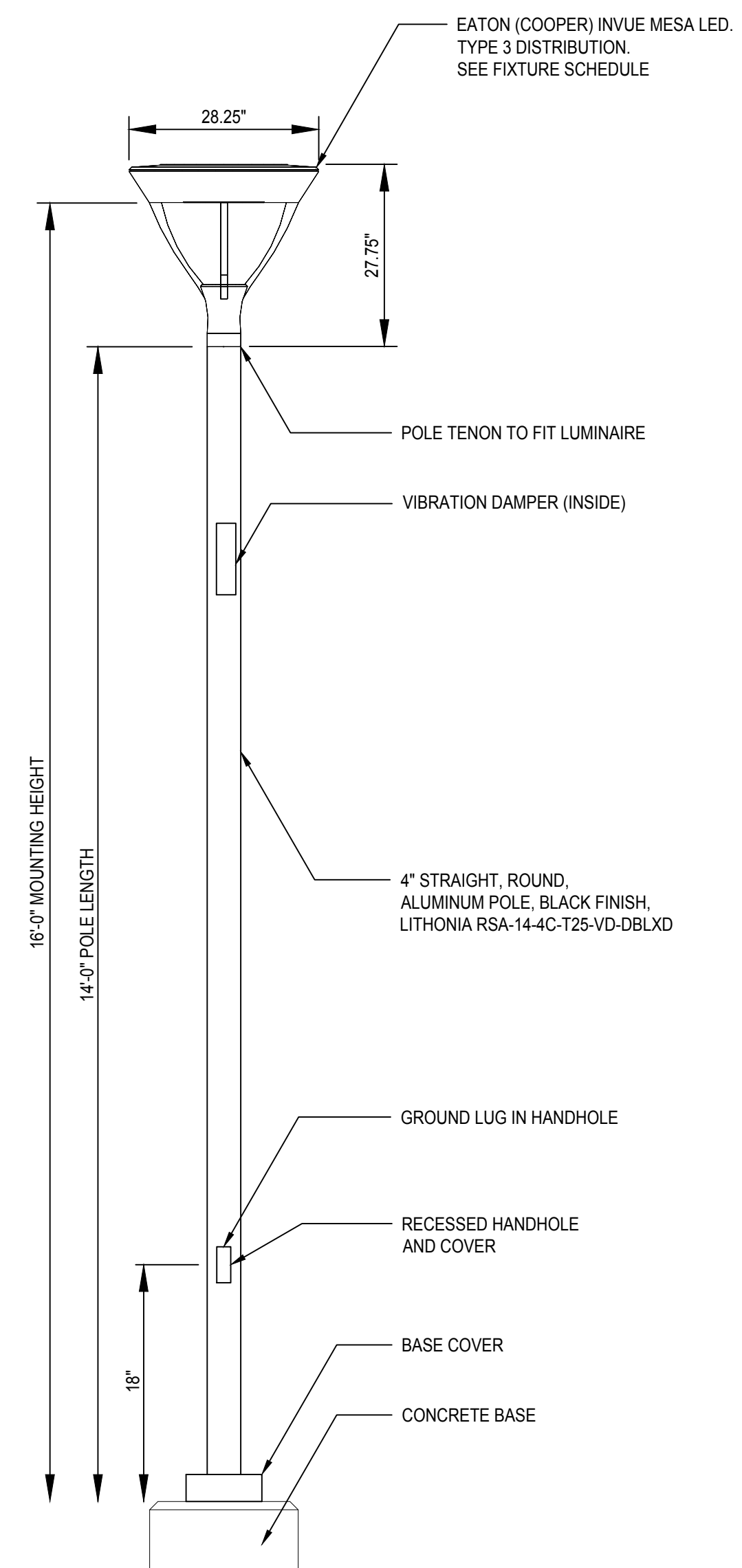
SITE LIGHTING FIXTURE SCHEDULE											
MARK	FIXTURE		VOLT.	LAMP			MOUNTING		NAME	MANUFACTURER	REMARKS
	TYPE	DISTRIBUTION		#	WATTS	TYPE	TYPE	HT.			
F1-T3	POLE MOUNTED WALKWAY LIGHT	TYPE III B1-U0-61	120-277V	1	25	LED 2485 LUMENS	POLE	VARIES	EATON INVUE MESA LED	MSA-E01-LED-E1-T3-BK-R	(1) 21 LED LIGHT BAR BLACK FINISH NEMA TWISTLOCK PHOTOCELL RECEPTACLE

ELECTRICAL CONTRACTOR IS RESPONSIBLE FOR COORDINATING MOUNTING WITH POLE(S)

8/24/2017 15:41

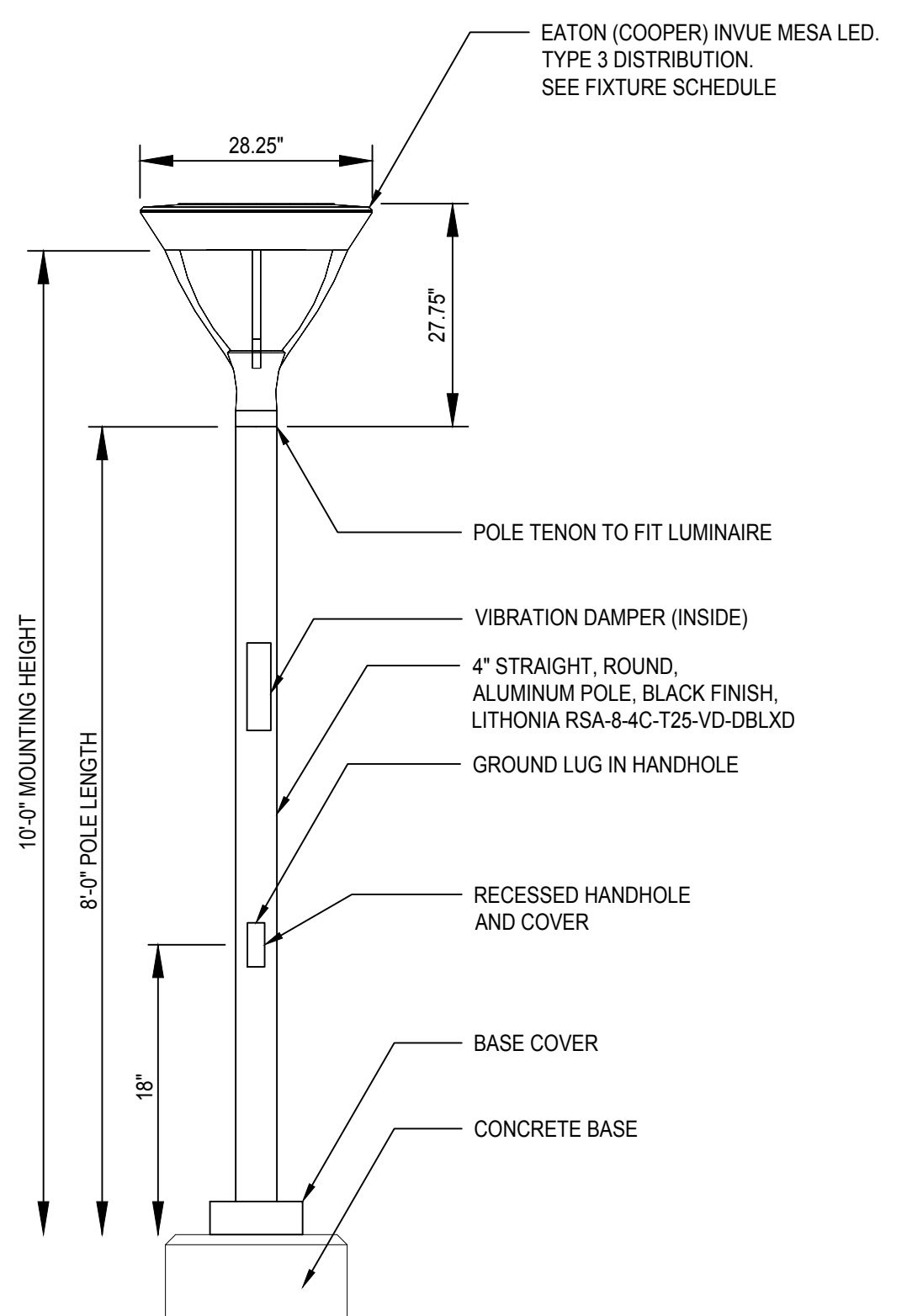
ILLINOIS
Facilities & Services
 ENGINEERING AND CONSTRUCTION SERVICES / ENGINEERING DESIGN
 Physical Plant Service Building
 1501 S. Oak St., Champaign, IL 61820
 General Information: 217.333.0697

CAMPUS WALKWAY LIGHTING
 NATIONAL SOYBEAN RESEARCH CENTER
 BUILDING NO. 0124
 1101 W PEABODY DRIVE, URBANA



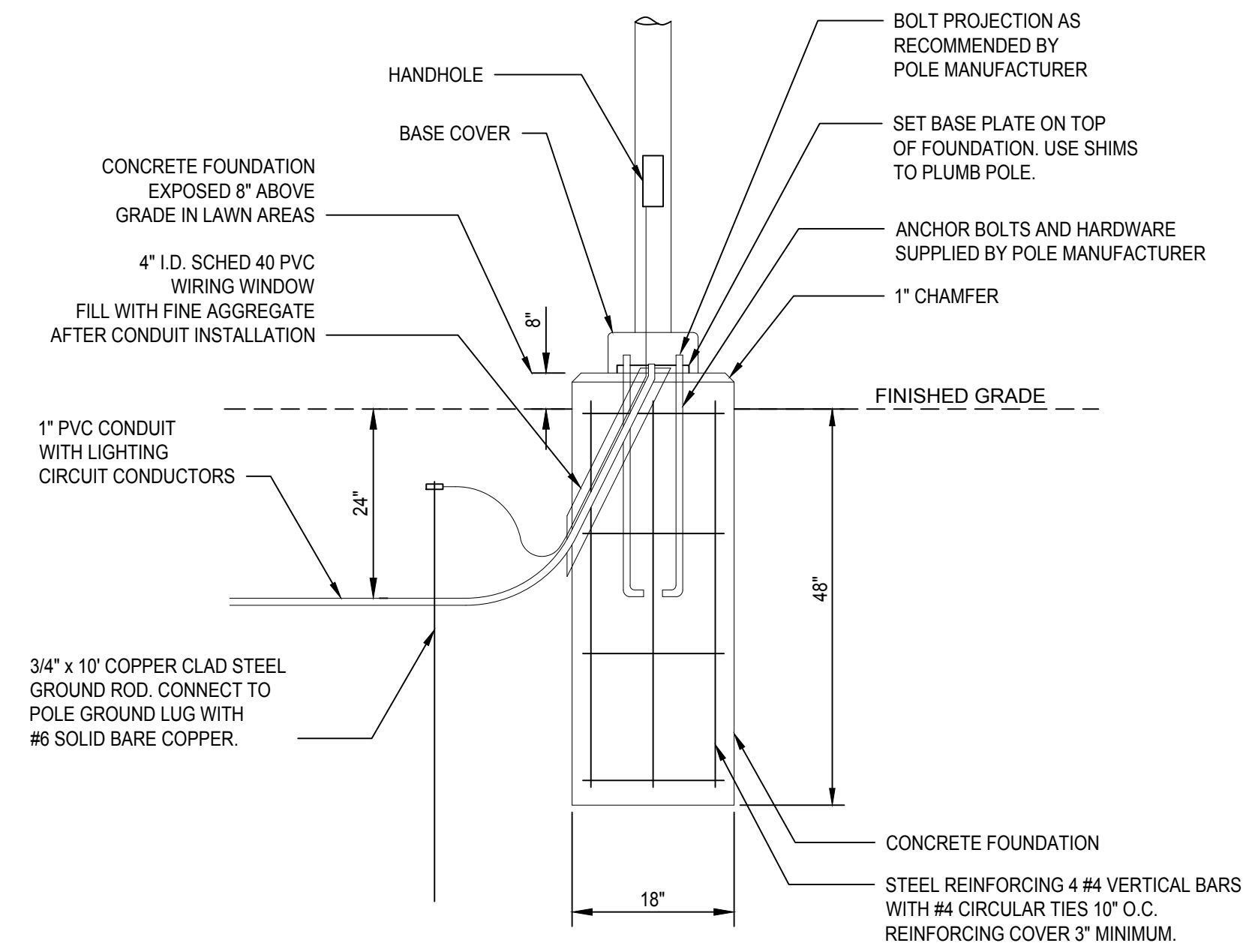
NOTES:
 1. ANCHOR BOLTS AND HARDWARE BY POLE MANUFACTURER.
 2. SEE THIS SHEET FOR CONCRETE BASE DETAILS.

1 FIXTURE TYPE F1-T3 ON 14 FOOT POLE
 NO SCALE



NOTES:
 1. ANCHOR BOLTS AND HARDWARE BY POLE MANUFACTURER.
 2. SEE THIS SHEET FOR CONCRETE BASE DETAILS.

2 FIXTURE TYPE F1-T3 ON 8 FOOT POLE
 NO SCALE



NOTES:
 1. PROVIDE TWO WIRING WINDOWS IN EACH FOUNDATION, ORIENTED 180 DEGREES FROM EACH OTHER.
 2. FORM FOUNDATION TO 18" BELOW FINISHED GRADE.
 3. DIMENSIONS SHOWN ARE BASED ON STANDARD SOIL CONDITIONS. IF OTHER THAN UNDISTURBED CLAY IS ENCOUNTERED, CONTACT ENGINEER IMMEDIATELY FOR RESOLUTION.

3 CONCRETE POLE BASE
 NO SCALE

IFP

AS-BUILT REQUIRED
 PROVIDE AS-BUILT DRAWING OF THIS PLAN REFLECTING ACTUAL INSTALLATION TO THE PROJECT COORDINATOR FOR PROJECT CLOSEOUT AND PAYMENT.

#	Date	Revision	Description
1	25AUG17	ISSUED FOR PRICING	

AIM Proj. No. -

ES W/O: 10530141 Date: 25 AUG 2017

Reviewed: BCF Drawn: KLC

LIGHTING DETAILS

E-500
 of 4 sheets