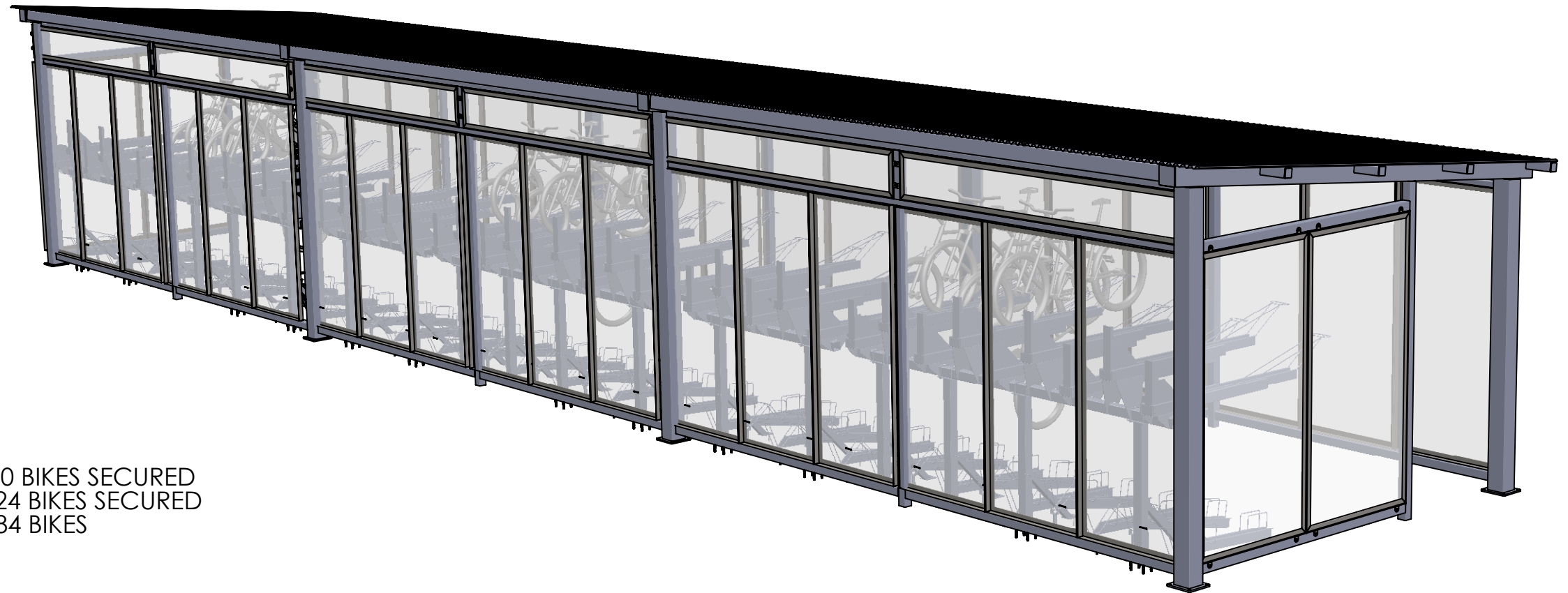


DESCRIPTION: UNIVERSITY ILLINOIS URBANA-CHAMPAGNE SHELTER +

PART NUMBER:

USED IN ASSEMBLY NUMBER:
 14' X 62.5' SLOPE

REV.



BIKE PARKING SUMMARY:

- 6 - DOUBLE DOCKER 10 = 60 BIKES SECURED
- 3 - DOUBLE DOCKER 8 = 24 BIKES SECURED
- TOTAL BIKES SECURED = 84 BIKES

PRINT APPROVAL	NAME	DATE
DRAWN:		
ENGINEERING:		
MANUFACTURING:		
FINAL:		

UNLESS OTHERWISE NOTED OR DIMENSIONED:

CENTER FEATURES ABOUT
 X0, Y0, AT CENTER OF STOCK
 DIMENSIONS ARE IN INCHES
 TOLERANCES: 0.X 0.05 0.XX 0.01 0.XXX 0.005

PROPRIETARY AND CONFIDENTIAL STATEMENT

THE INFORMATION CONTAINED IN THIS DRAWING IS THE SOLE PROPERTY OF GROUND CONTROL SYSTEMS™. ANY REPRODUCTION IN PART OR AS A WHOLE IS STRICTLY PROHIBITED WITHOUT THE WRITTEN PERMISSION OF GROUND CONTROL SYSTEMS™

STOCK MATERIALS FINISH
 DO NOT SCALE DRAWING SCALE: 1:50

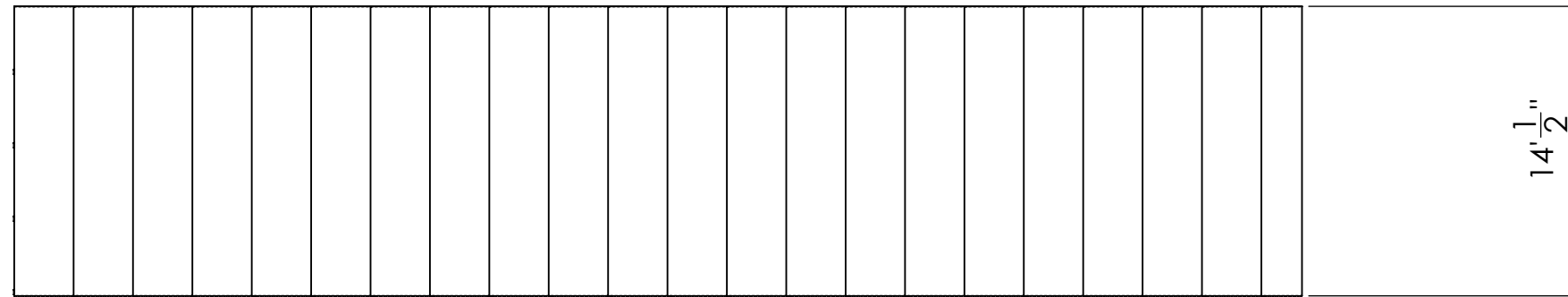
WEIGHT: SIZE: **B** SHEET 1 OF 2

DESCRIPTION: UNIVERSITY ILLINOIS URBANA-CHAMPAGNE SHELTER +

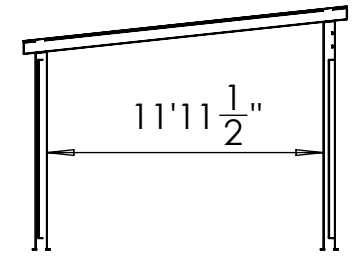
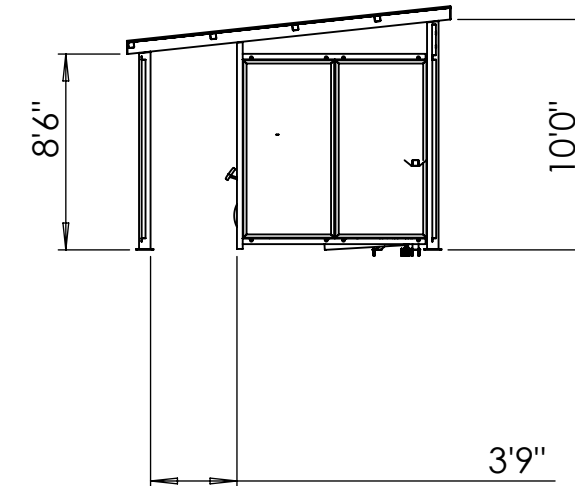
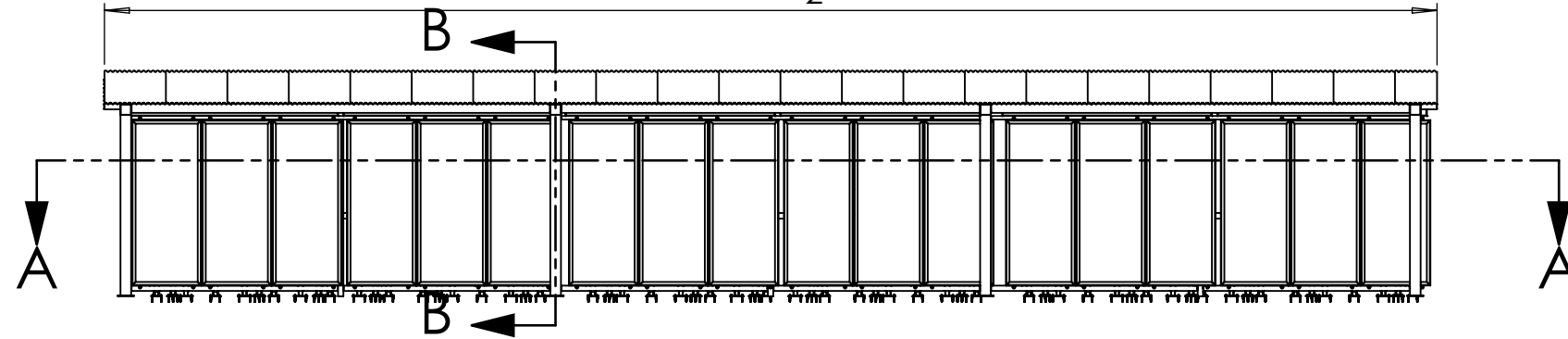
PART NUMBER:

USED IN ASSEMBLY NUMBER:
 14' X 62.5' SLOPE

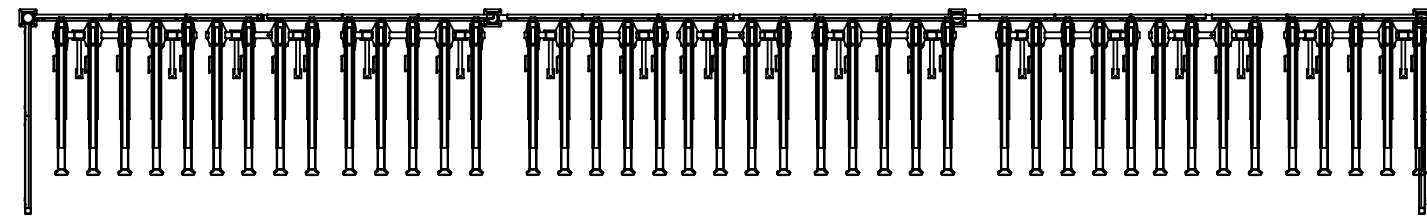
REV.



62' 6 1/2"



SECTION B-B



SECTION A-A

PRINT APPROVAL	NAME	DATE
+		
+		
+		
+		

UNLESS OTHERWISE NOTED OR DIMENSIONED:

CENTER FEATURES ABOUT
 X0, Y0, AT CENTER OF STOCK
 DIMENSIONS ARE IN INCHES
 TOLERANCES: 0.X 0.05 0.XX 0.01 0.XXX 0.005

PROPRIETARY AND CONFIDENTIAL STATEMENT

THE INFORMATION CONTAINED IN THIS DRAWING IS THE SOLE PROPERTY OF GROUND CONTROL SYSTEMS™. ANY REPRODUCTION IN PART OR AS A WHOLE IS STRICTLY PROHIBITED WITHOUT THE WRITTEN PERMISSION OF GROUND CONTROL SYSTEMS™