

POWER Innovation ILL  
World-class Solutions  
NRES 285  
Transportation Network  
Needs For a Facility  
RESEARCH  
Unity  
Integration  
Involvement  
SI

Stacey DeLorenzo  
TDM Coordinator  
Facilities & Services



**Facilities & Services**

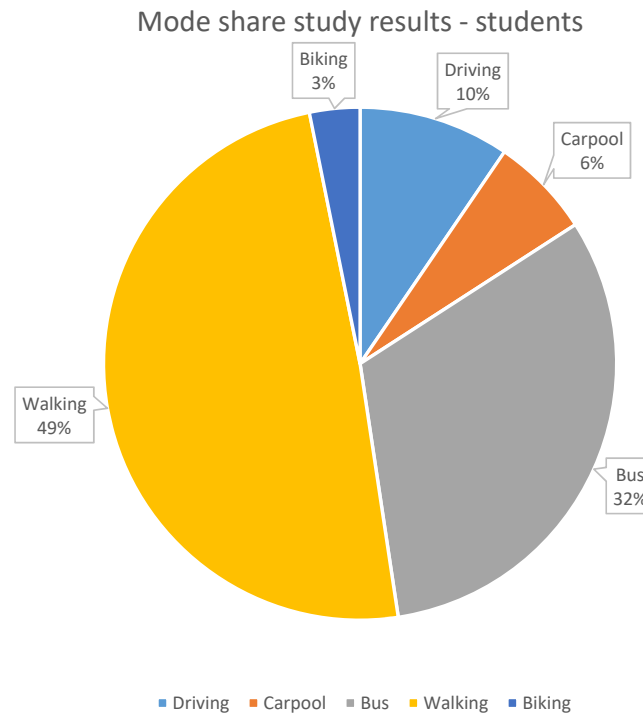
UNIVERSITY OF ILLINOIS URBANA-CHAMPAIGN

# What the TDM department does?

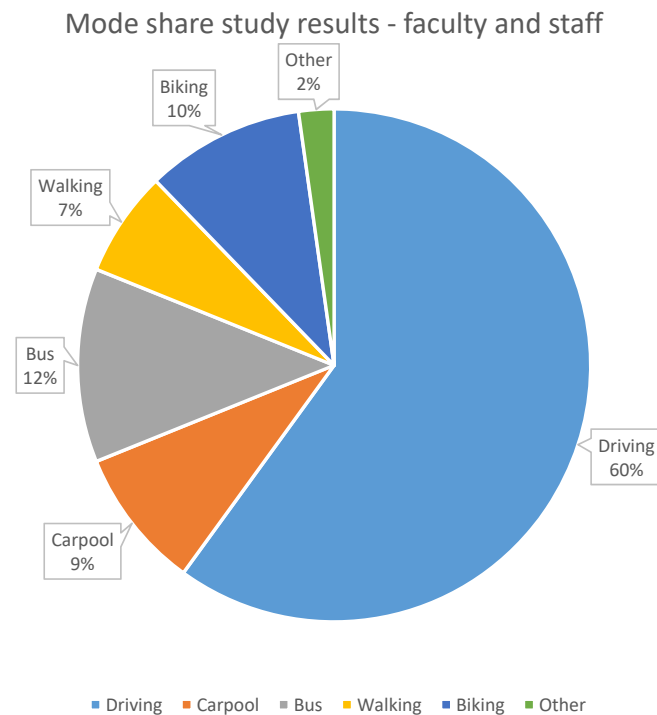
- Transportation Demand Management (TDM) works with regional transportation planning partners to coordinate the networks for all forms of campus travel, including walking, bicycling, transit, and motor vehicles.
- Read the approved [2019 to 2024 TDM Plan](#) to learn more.
- Send us your feedback or suggestion using this form: [Campus Transportation Program and Infrastructure Feedback Form](#)
- Learn more at [go.fs.illinois.edu/tdm](https://go.fs.illinois.edu/tdm)



# Mode Share study from 2019 – students



# Mode Share study from 2019 – faculty and staff



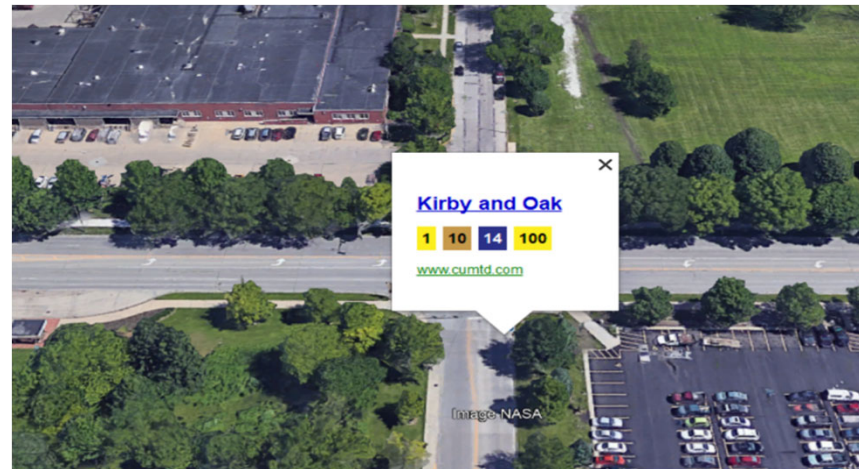
# Outline – Key points to consider

- Facility information
  - Location of the facility
  - Who does the facility serve
- Transportation access
  - ADA compliance
  - Transit access
  - Sidewalk and Crosswalk availability and connectivity
  - Pedestrian and bicyclist volume
  - Bicycle amenities
  - Parking availability
  - Carshare availability
- Improve the sustainability of the transportation features



# Facility information

- Location of the facility



- Who does the facility serve?
  - Predominantly student population
  - Predominantly faculty/staff population
  - Mixed use – both campus population and public



Trust · Respect · Accountability · Integrity · Teamwork · Safety · Perseverance

# Transportation access

- ADA compliance

- All university buildings must be compliant (both internal and external to the building)
- Buildings frequented more often could have more than one ADA entrances, like Illini Union, Memorial Stadium, Foellinger Auditorium



Engineering Hall

GRAINGER ENGINEERING LIBRARY ↑

BARDEEN (ENGINEERING) QUAD ↑

WRIGHT AND HEALEY ←

ILLINI UNION ↓

- Accessible Mens Restroom
- Accessible Womens Restroom
- Bus Stop
- Direction- North Up
- Entrance-Exit
- Entrance/Exit - Accessible Entry with Automatic Doors





# Transportation access (Continued)

- Transit access



Trust · Respect · Accountability · Integrity · Teamwork · Safety · Perseverance



# Transportation access (Continued)

- Sidewalk and Crosswalk availability and connectivity



Trust · Respect · Accountability · Integrity · Teamwork · Safety · Perseverance

# Transportation access (Continued)

- Pedestrian, bicyclist and motor vehicle volume



Trust · Respect · Accountability · Integrity · Teamwork · Safety · Perseverance

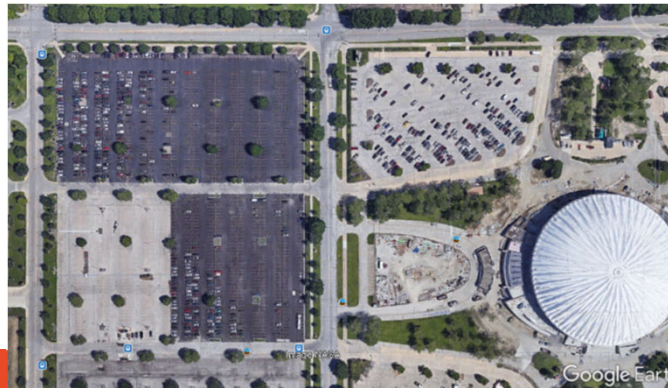


# Transportation access (Continued)

- Bicycle amenities



- Parking availability



- Carshare availability



Trust · Respect · Accountability · Integrity · Teamwork · Safety · Perseverance

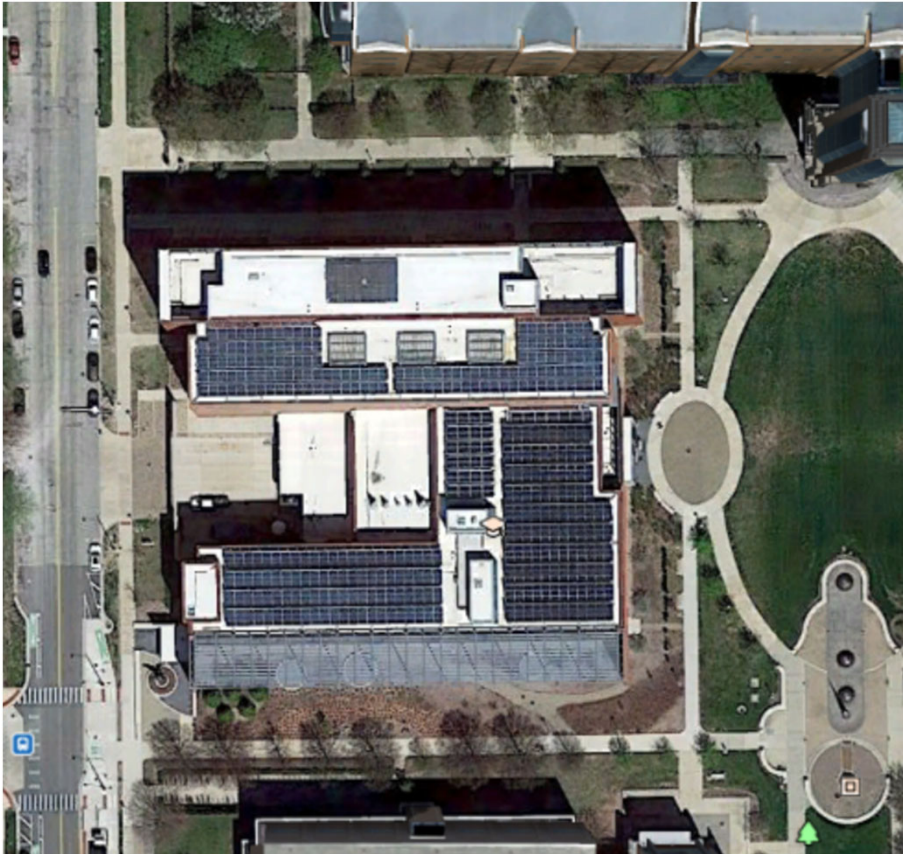


- Illini Union
- Located at the core of campus
  - Transit connectivity high + transit monitors inside the building
  - Bus shelter available
  - Bike lane/path connecting North-South on Green Street and Mathews Ave, and East-West on Green Street and through the Main Quad
- Serves students for recreation and group activities, staff offices, and visitors
  - Several restaurants within the building
  - Parking available for hotel guests + metered parking
  - Bicycle parking available near each entrance
  - 4 entry points – all ADA accessible



Trust · Respect · Accountability · Integrity · Teamwork · Safety · Perseverance





- ECE Building
- Located on the Engineering Quad
  - Transit connectivity + transit monitors inside the building
  - Bus shelter not available
  - Bike lane/path connecting North-South on Wright Street, and no East-West specific bike path connection. There are multi-use along the East-West corridor.
- Serves students predominantly
  - One café inside the building
  - Limited number of street parking available
  - Bicycle parking available near the West entrance
  - 2 entry points are ADA accessible



Trust · Respect · Accountability · Integrity · Teamwork · Safety · Perseverance

# How to make it more sustainable?

- Using more natural products in the pavement area. Such as
  - Permeable pavers
  - Biologically produced pavers and biocement for construction
  - Recycled asphalt and concrete materials
  - Provide areas for other green stormwater infrastructure installations
- Promoting active modes of transportation and discouraging single occupancy vehicles
  - Emphasize pedestrian and bicycle pathways
  - Ensure adequate bike parking
  - Ensure bus stops include facilities for all types of weather & information kiosks



**Thank You!**

For questions and concerns please contact  
[fandscampustdm@illinois.edu](mailto:fandscampustdm@illinois.edu)



**Facilities & Services**

UNIVERSITY OF ILLINOIS URBANA-CHAMPAIGN