

iCAP Energy Team: Review of Energy Projects

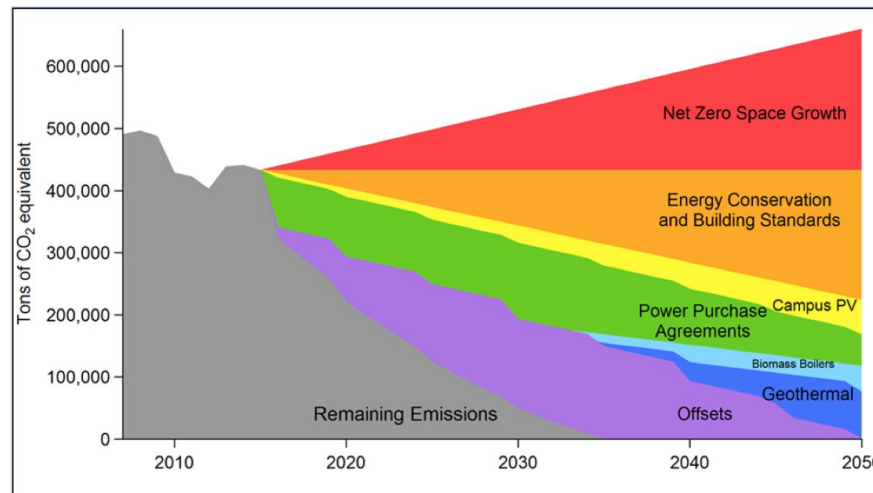
Student Members: Shannon Anderson, Matthew Gold, Ritvik Desai, Meghana Pothukuchi



UNIVERSITY OF
ILLINOIS
URBANA-CHAMPAIGN

2.1: Develop a comprehensive energy planning document

Our team is tasked with developing a recommendation for F&S that includes a detailed strategy for meeting with FY50 net-zero greenhouse emissions goal by FY24



Primary Goals for Project Proposal by 2025

2.2: Increase Energy Efficiency

Provide a recommendation that reduces the Energy Use Intensity of University facilities from the FY08 baseline by 45% by FY30, 50% by FY50, and 60% by FY50



2.3: Use Clean Energy Sources

Provide a recommendation to achieve 15% of total campus energy demand from clean energy sources by FY30

2.3.1 Use at least 140,000 MWh/year of clean power by FY25



Primary Goals for Project Proposal by 2025

Building Envelope Pilot Project

20-30% reduction



Collaboration with
Facilities and Services

Transportation Building
assessment coming soon!



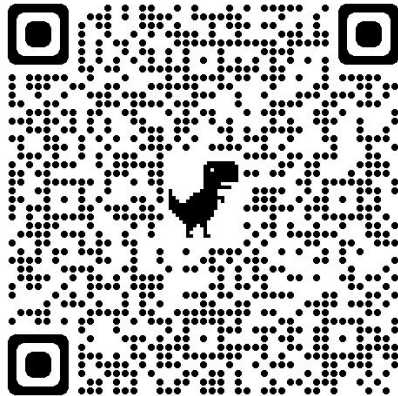
Selected Projects

Campus Engagement and Education

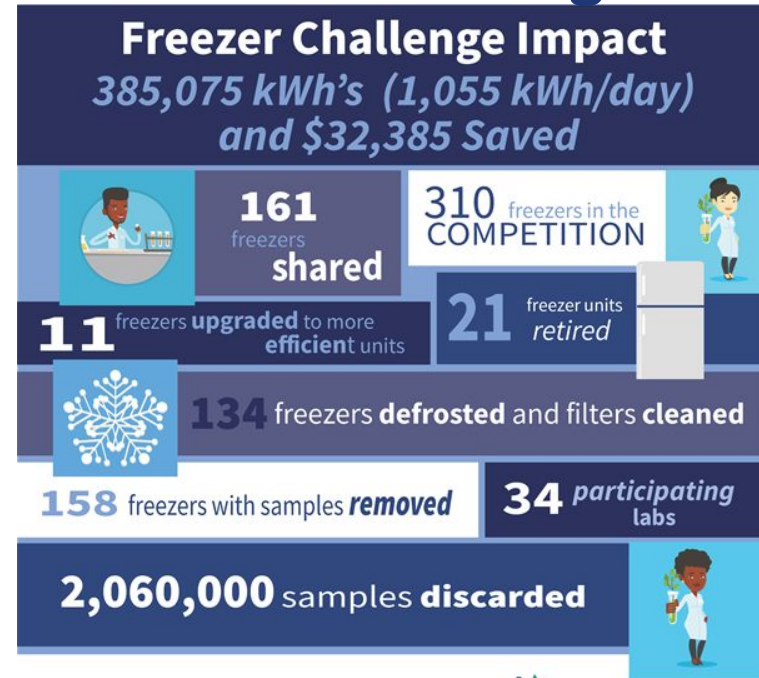
Eco-Olympics



go.illinois.edu/ECO



Freezer Challenge



I Facilities & Services



<https://freezerchallengeui.wixsite.com/freezerchallenge>

New project ideas and layouts in the works!
Collaboration with **Engagement Team?**



Selected Projects

Solar Farm 2.0

Brings clean energy to over
50,000 MWh/year!

Incorporates 21 native
pollinator-friendly species







Makes University of
Illinois the
3^r
largest user of onsite
renewable power



Selected Projects

2021 Goals Summary

-  Building Envelope Pilot project
-  Increased compliance with building energy codes
-  Reduce total energy consumption of college units
-  Educate campus administrations on the associated costs of space growth, and how these decisions impact the iCAP goals

Thank you!

<https://icap.sustainability.illinois.edu/themes/energy>



UNIVERSITY OF
ILLINOIS
URBANA-CHAMPAIGN