

Illinois River

*TED TALK:
ECO-EDITION
CLIMATE ACTION
NEEDS NEW
FRONTLINE
LEADERSHIP*

LUCY NIFONG

LUCY NIFONG



SPRINGFIELD, IL



SENIOR IN AGRICULTURAL AND CONSUMER
ECONOMICS: PUBLIC POLICY AND LAW

FORMERLY A STUDENT IN CIVIL AND ENVIRONMENTAL ENGINEERING,
METROPOLITAN FOOD AND ENVIRONMENTAL SYSTEMS, AND ACE: POLICY,
INTERNATIONAL TRADE AND DEVELOPMENT



VICE CHAIR INTERNAL OF STUDENT
SUSTAINABILITY COMMITTEE



ISEE COMMUNICATIONS INTERN



VICE PRESIDENT OF THE
FOOD JUSTICE ALLIANCE



Turkey Run State Park

CLIMATE ACTION NEEDS NEW FRONTLINE LEADERSHIP

OZAWA BINESHI ALBERT

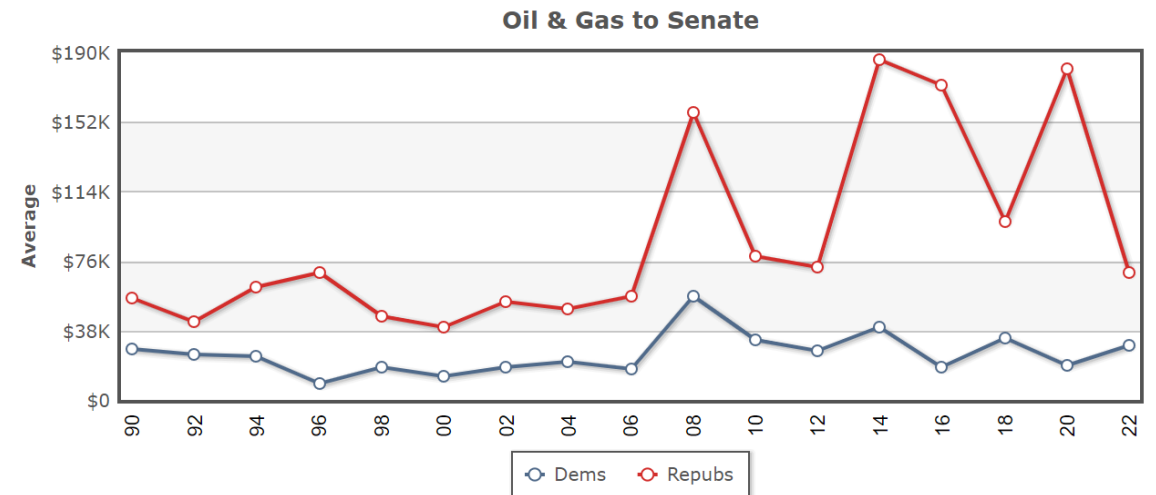
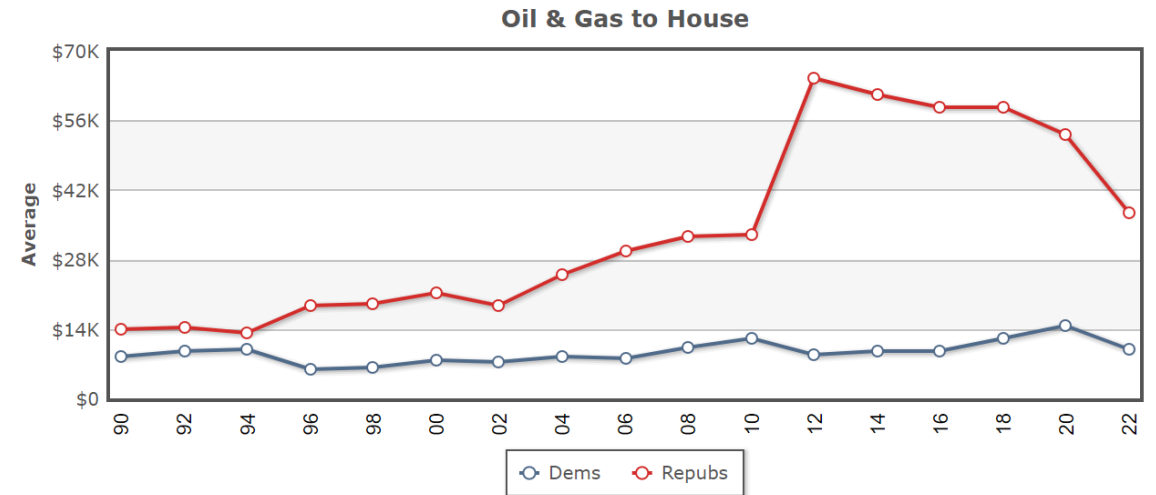
The TED logo is displayed in a large, bold, red, sans-serif font. It is centered within a white rectangular area that occupies the lower half of the slide. The letters are thick and blocky, with the 'E' having three horizontal bars. The entire logo is set against a light gray background that features a thin, light blue vertical line running down the right side.

OUR LEADERS

- THE AVERAGE AGE OF US REPRESENTATIVES IS 58.4 AND THE AVERAGE AGE OF US SENATORS IS 64.3
- 67% OF REPRESENTATIVES AND 76% OF SENATORS HAVE EDUCATION BEYOND A BACHELOR'S DEGREE
- 60% OF THE US POPULATION IS WHITE BUT 76% OF CONGRESS IS WHITE
- 273 REPRESENTATIVES AND 47 SENATORS LIST "BUSINESS" AS THEIR FORMER OCCUPATION
- IN 2022, DEMOCRATS RECEIVED \$5.6 MILLION IN FUNDS FROM THE OIL AND GAS INDUSTRY AND REPUBLICANS RECEIVED \$25.4 MILLION

Source: <https://www.opensecrets.org/industries/indus.php?cycle=2022&ind=E01>
and <https://crsreports.congress.gov/product/pdf/R/R46705>

Average Contributions to Members of Congress, 1990-2022



OUR PEERS

ON THE FIRST DAY OF CLASSES THIS SEMESTER,
ONE OF MY PROFESSORS ASKED:

“Should the country’s response to pollution consist of efforts to reduce emissions/discharges to their *optimal level* — the point at which further reduction costs more than the human health and welfare gains from such reduction — or should it consist of strategies aimed at achieving *zero emissions*, and if the latter, how quickly?”

WHAT DID UIUC STUDENTS THINK?

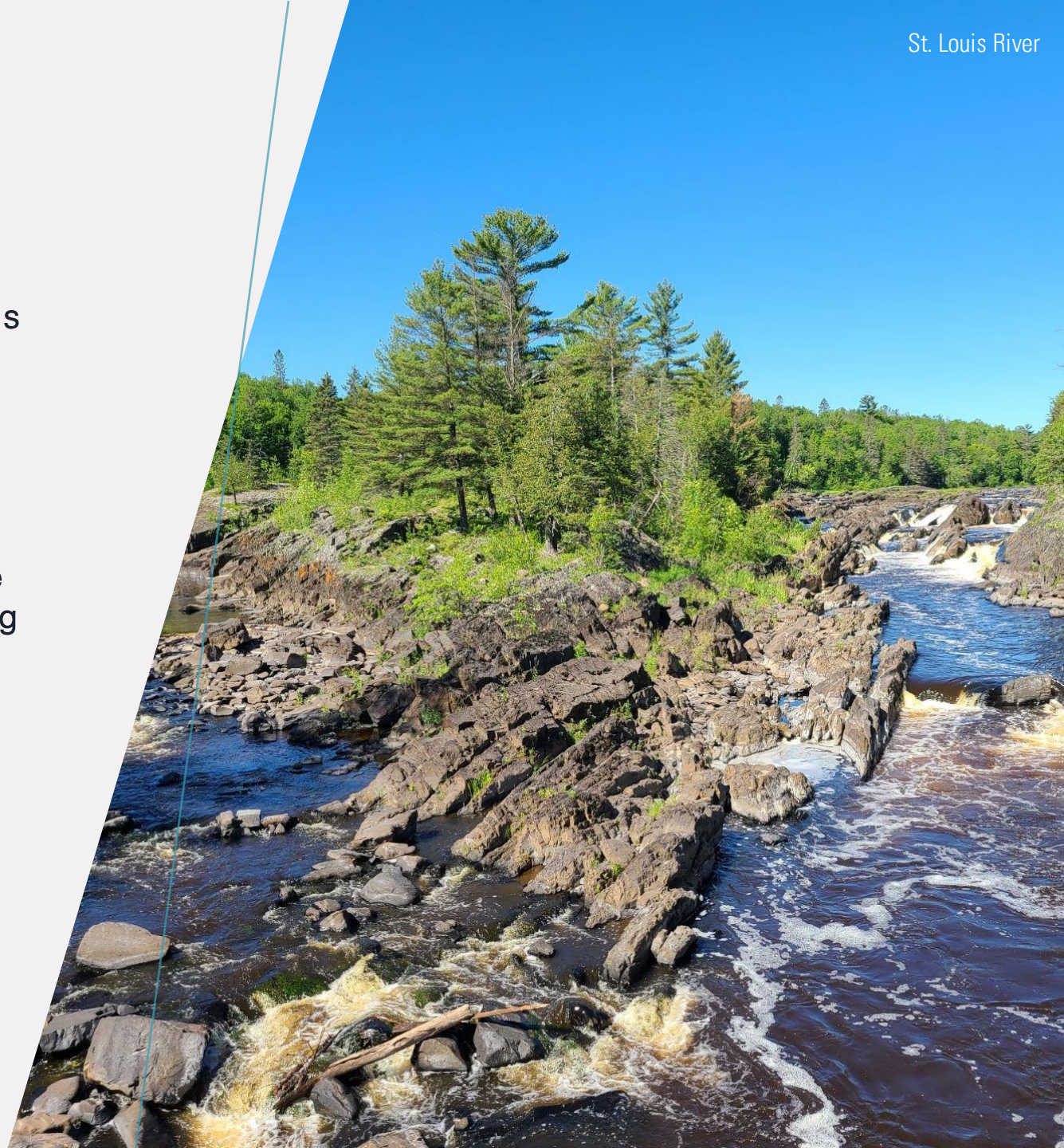
OUR PEERS

Most students answered that the United States should only focus on reducing emissions to the economically optimal level. Many felt that economic prosperity is more important than long-term environmental health.

CONSIDER:

Most UIUC students are insulated from the consequences of climate change. According to the New York Times, 50% of UIUC students come from the top 20% (their yearly family income is greater than or equal to \$110,000) and the median family income of a student from Illinois is \$109,000.

MOST UIUC STUDENTS ARE NOT ON THE
FRONTLINE OF THE CLIMATE CRISIS



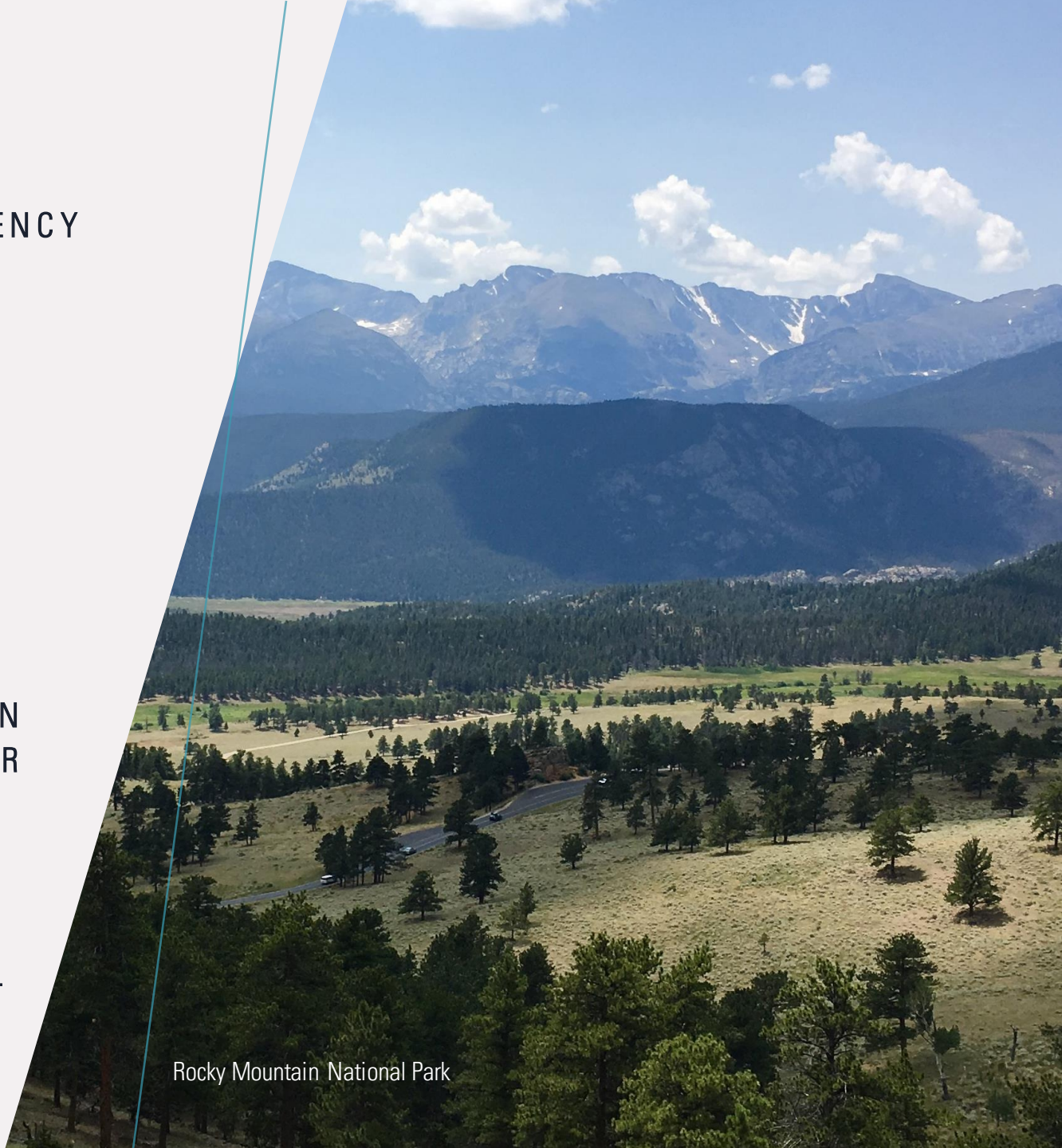
DISCUSSION

HOW CAN WE CREATE A SENSE OF CLIMATE URGENCY AMONG UIUC STUDENTS AND OTHER PEOPLE WHO ARE INSULATED FROM THE HARMFUL EFFECTS OF CLIMATE CHANGE?

ARE CLIMATE GOALS AND ECONOMIC GOALS COMPATIBLE?

HOW DO WE ENSURE THAT THE PEOPLE ON THE FRONTLINE OF CLIMATE CHANGE ARE INVOLVED IN GOVERNMENT DECISIONS AND POLICYMAKING FOR ENVIRONMENTAL ISSUES?

ARE COMMUNITY-BASED INITIATIVES TO COMBAT CLIMATE CHANGE MORE IMPACTFUL THAN LARGE-SCALE POLICY?



Rocky Mountain National Park