



ZERO WASTE AT UNIVERSITY OF ILLINOIS: CHALLENGES, SUCCESSES, & OPPORTUNITIES



**Institute for Sustainability, Energy, and
Environment (iSEE)**
UNIVERSITY OF ILLINOIS URBANA-CHAMPAIGN



Facilities & Services
UNIVERSITY OF ILLINOIS URBANA-CHAMPAIGN

NICE TO MEET YOU!



Daphne Hulse
Zero Waste Coordinator
Facilities & Services

dlhulse2@illinois.edu

O: +1 (217) 333-7550



**Institute for Sustainability, Energy, and
Environment (iSEE)**

UNIVERSITY OF ILLINOIS URBANA-CHAMPAIGN



Facilities & Services

UNIVERSITY OF ILLINOIS URBANA-CHAMPAIGN

AGENDA

1. F&S + iSEE Overview

- How the units work together

2. Illinois Climate Action Plan

- Zero waste objectives

3. Campus Waste Management

- 4-step process

4. Successes, Ambitions, & Challenges

- Top-down & ground-up

5. Opportunities

- Friends & family as trusted messengers

WHAT IS FACILITIES & SERVICES?

Provides all physical plant, operational, and essential services for sustaining an environment that fosters the research, teaching, and public engagement activities at Illinois.

- Sustainable Transportation
- Resilient Grounds and Landscapes
- Zero Waste and Recycling
- Clean and Renewable Energy
- Energy Conservation
- LEED Certifications
- Green Stormwater Infrastructure
- Sustainability Education and Behavior Change
- Academic and Research Collaborations



Institute for Sustainability, Energy, and Environment (iSEE)

UNIVERSITY OF ILLINOIS URBANA-CHAMPAIGN



Facilities & Services

UNIVERSITY OF ILLINOIS URBANA-CHAMPAIGN

WHAT IS iSEE?

*The Institute is purposed to find solutions for the ever-growing demand for food, water, and energy while ensuring a safe, productive, and sustainable environment for all global citizens through research, campus sustainability, and education and outreach. **The overarching goal: to become a global model of sustainability by creating effective, positive change.***

- Illinois Climate Action Plan (iCAP)
- iCAP Teams
- iCAP Portal
- Certified Greener Campus Programs
- Illini Lights Out
- TED Talk: Eco-Edition Series
- Trash Pickup Events
- Composting
- Liaise with the Student Sustainability Committee (SSC)



Institute for Sustainability, Energy, and Environment (iSEE)

UNIVERSITY OF ILLINOIS URBANA-CHAMPAIGN



Facilities & Services

UNIVERSITY OF ILLINOIS URBANA-CHAMPAIGN



ILLINOIS CLIMATE ACTION PLAN



**Institute for Sustainability, Energy, and
Environment (iSEE)**

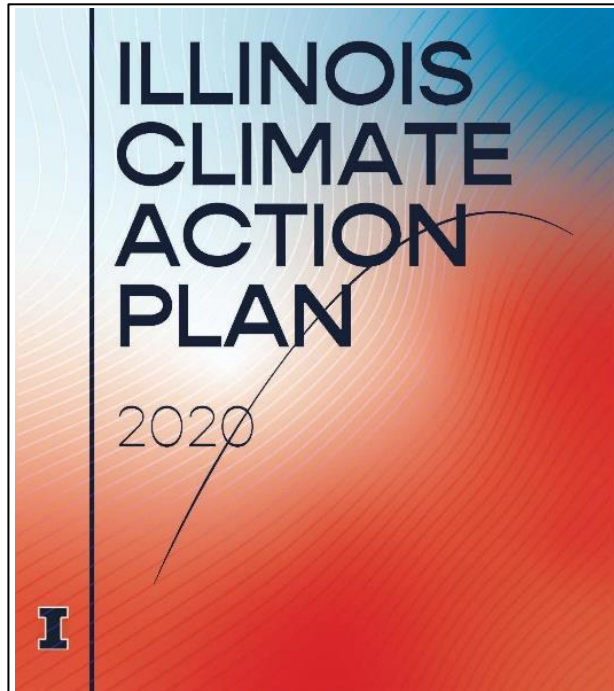
UNIVERSITY OF ILLINOIS URBANA-CHAMPAIGN



Facilities & Services

UNIVERSITY OF ILLINOIS URBANA-CHAMPAIGN

ZERO WASTE OBJECTIVES



- 5.1 Sustainable Procurement Reports
- 5.2 Reduce Landfilled Waste
- 5.3 Establish a Culture of Reuse
- 5.4 Reduce Food Scraps
- 5.5 Plan for Organic Waste
- 5.6 Use Local Food
- 5.7 Green Cleaning Program



**Institute for Sustainability, Energy, and
Environment (iSEE)**

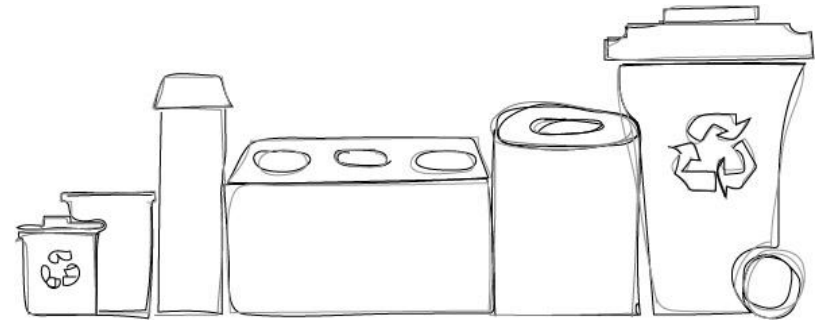
UNIVERSITY OF ILLINOIS URBANA-CHAMPAIGN



Facilities & Services

UNIVERSITY OF ILLINOIS URBANA-CHAMPAIGN

CAMPUS WASTE MANAGEMENT



**Institute for Sustainability, Energy, and
Environment (iSEE)**

UNIVERSITY OF ILLINOIS URBANA-CHAMPAIGN



Facilities & Services

UNIVERSITY OF ILLINOIS URBANA-CHAMPAIGN

1 COLLECTION + ENGAGEMENT



1 COLLECTION + ENGAGEMENT



2 TRANSPORT + HAULING



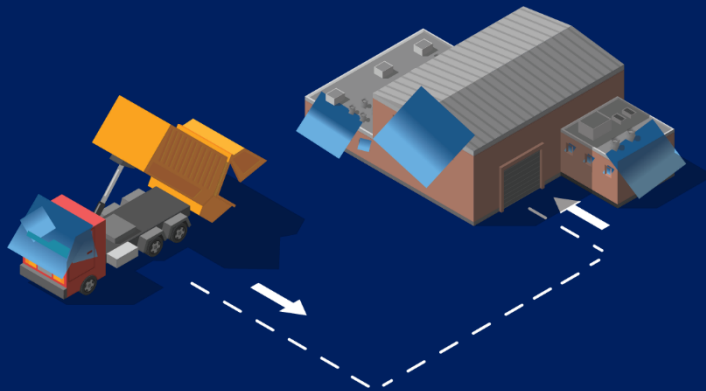
1 COLLECTION + ENGAGEMENT



2 TRANSPORT + HAULING



3 TRANSFER + RECORDING



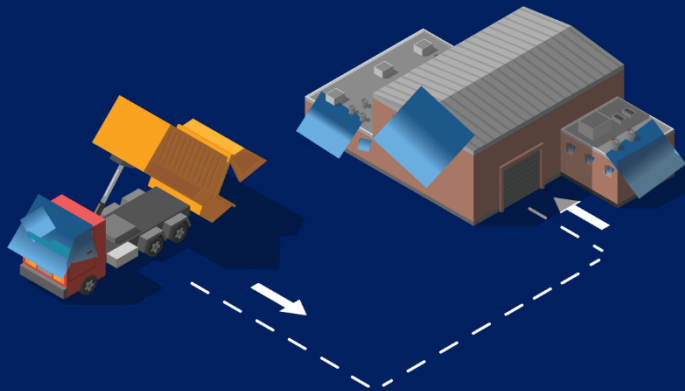
1 COLLECTION + ENGAGEMENT



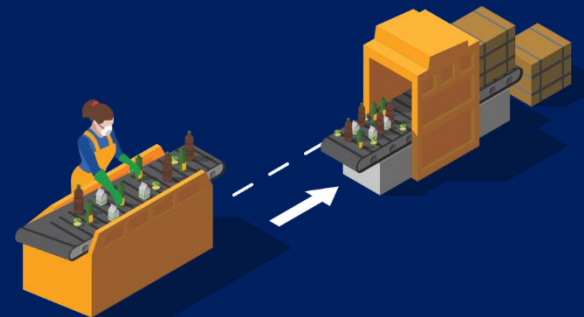
2 TRANSPORT + HAULING



3 TRANSFER + RECORDING



4 SORTING + RECOVERY



1 COLLECTION + ENGAGEMENT



RECYCLING

1. Plastic 1 (PETE) + 2 (HDPE)
 - Check the bottom of the container
2. Aluminum Cans
3. Paper
 - Office paper, magazines, manila & file folders, envelopes, newspaper, junk mail, phone books, sticky notes
4. Cardboard
5. Scrap Metals
 - Copper, conduit, metal shelving

1 COLLECTION + ENGAGEMENT



STANDARDIZING



BAG COLORS



BINS

1 COLLECTION + ENGAGEMENT

REPLACING





Institute for Sustainability, Energy, and Environment (iSEE)

UNIVERSITY OF ILLINOIS URBANA-CHAMPAIGN



Facilities & Services

UNIVERSITY OF ILLINOIS URBANA-CHAMPAIGN

ZERO WASTE SUCCESSES



**UNIVERSITY DINING:
GRIND2ENERGY**



**F&S + YMCA +
UNIVERSITY HOUSING:
DUMP & RUN**

ZERO WASTE SUCCESSES



GREENER solutions working at Illinois
How University Housing Dining Services helps convert campus food waste into energy and fertilizer for the community.

ZERO WASTE SUCCESSES



**ILLINI UNION:
RECYCLING
INFRASTRUCTURE**

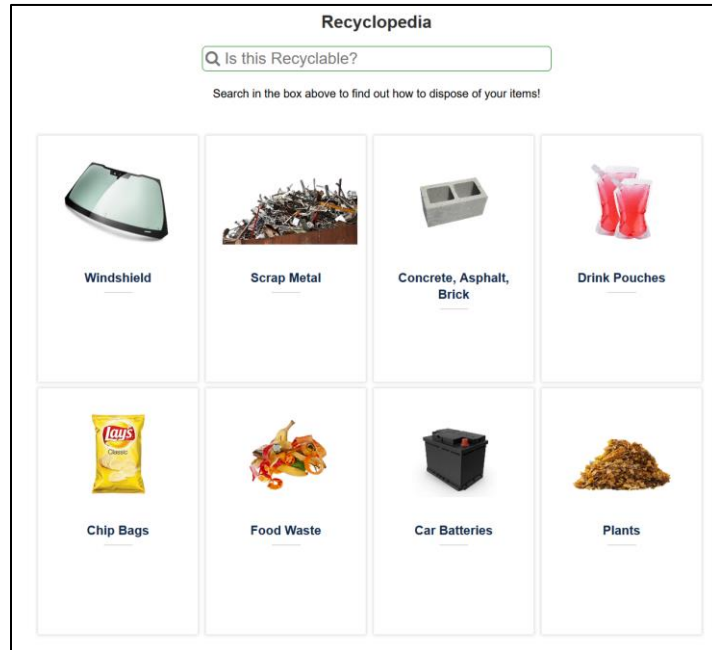


**COCA-COLA:
RECYCLING-
FOCUSED EVENTS**

ZERO WASTE SUCCESSES



ZERO WASTE AMBITIONS



F&S: RECYCLOPEDIA



**DIA, F&S, iSEE:
TAILGATING**

ZERO WASTE AMBITIONS

Paper hand towel circularity made possible

A review of technology innovations and the incremental path to create better and sustainable washrooms

F&S: PAPER HAND TOWEL RECYCLING



F&S: GREEN FOOD TRUCKS

ZERO WASTE CHALLENGES



**CAMPUS: EDU FOR
TRANSITORY
POPULATION**



**CAMPUS: ORGANIC
WASTE DISPOSAL**

ZERO WASTE OPPORTUNITIES



**F&S:
CONSTRUCTION/
DEMOLITION
DIVERSION**



**CEE, ECE, ISTC, + F&S:
AI WASTE
CHARACTERIZATION**

OPPORTUNITY: INDIVIDUALS AS TRUSTED MESSENGERS

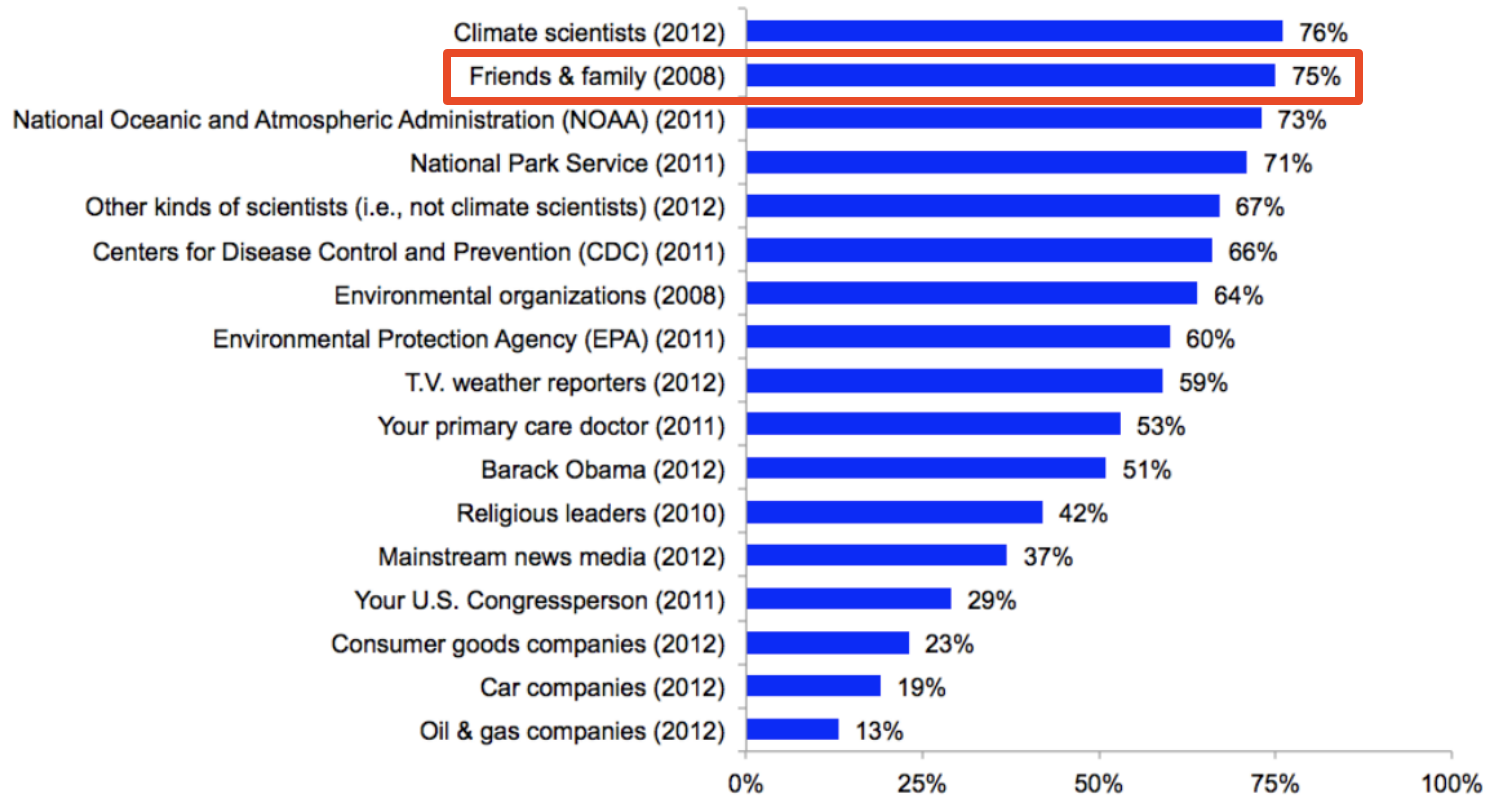
“

Climate change is a challenging issue to convey. One reason lies in the fact that its principal culprits—carbon dioxide and other heat-trapping greenhouse gases—are colorless, odorless gases, and the long-term average changes set in motion by them have emerged only recently from the daily, seasonal, and interannual ‘noise’ of variability. Relative to human perceptual capacities, the problem is building far too slowly to be noticed by the lay eye, and the early environmental impacts of climate change have mostly occurred (and are clearly noticed) in regions far from where the majority of mid-latitudinal audiences live. The lack of direct experience makes climate change—at least for now—fundamentally a problem that requires signaling, illustrating, and explaining by those who have expert knowledge to those who don’t **Communication is essential.**

”

Americans Trust Climate Scientists, Friends & Family Most As Sources Of Information About Global Warming

- % of Americans who strongly or somewhat trust... -



How much do you trust or distrust the following as a source of information about global warming?

Base: Americans 18+.



George Mason University
Center for Climate Change Communication

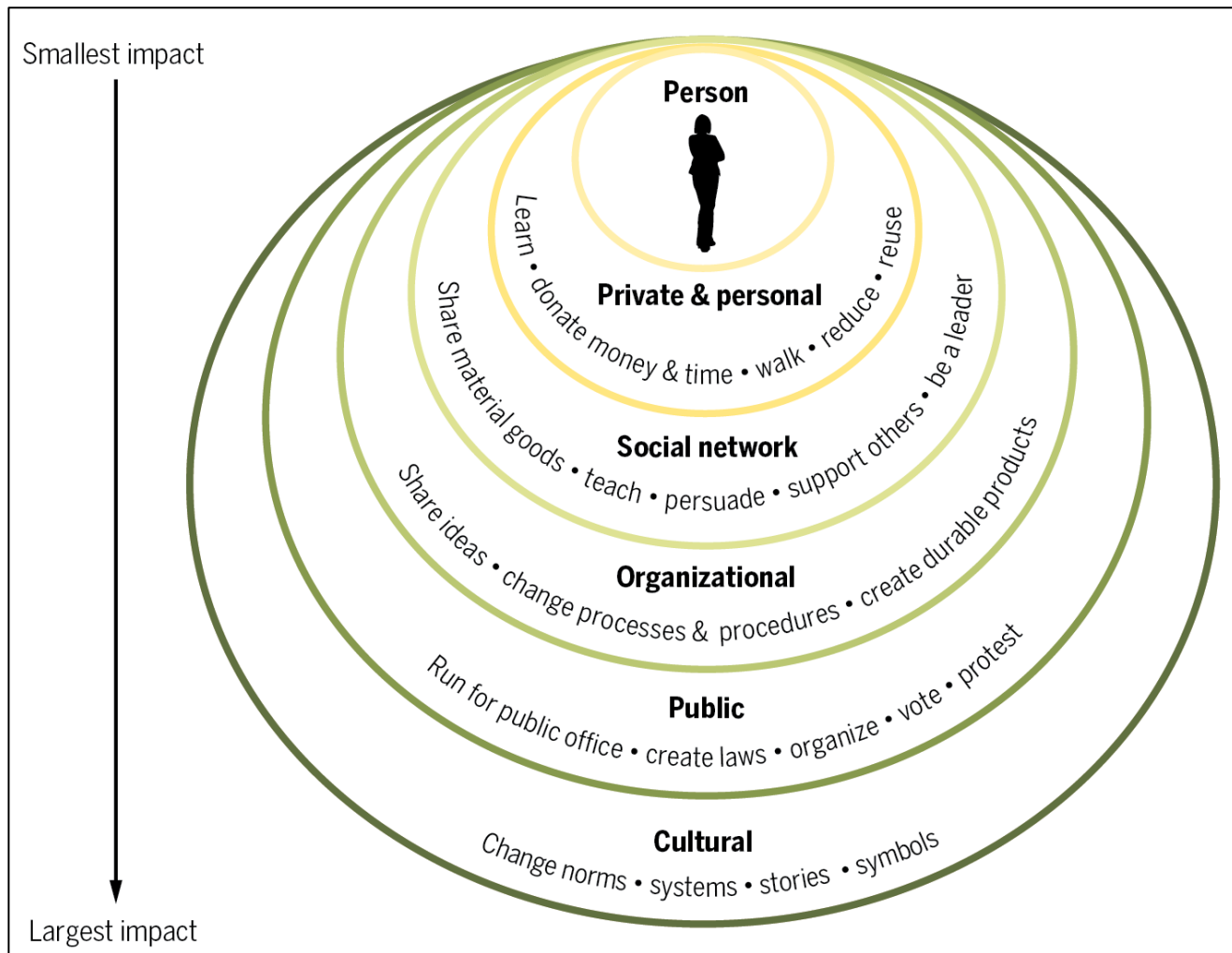



Fig 1. An individual's spheres of influence.
 Individual actions have the greatest effect when they influence broader systems.

OPPORTUNITY: WE ARE HIRING!

 **Facilities & Services**

[Request Service](#) [Services](#) [Resources](#) [Projects](#) [Divisions](#) [Customers](#) [About Us](#) [My.FS](#) [Erin](#)

[Home](#) / [About Us](#) / [Job Opportunities](#)

- Diversity
- Employee Recognition
- Executive Bios
- Job Opportunities**
- Leadership Directory

CURRENT F&S JOB OPENINGS

<u>Job Opening</u>	<u>Close Date</u>
Intern - Construction Services Project Coordination	Apr 28, 2023
Intern - Utilities & Energy Services	Apr 28, 2023
Intern - Capital Deferred Maintenance	Apr 28, 2023
Intern - Capital Project Management	Apr 28, 2023
Intern - Human Resources	Apr 28, 2023
Intern - Customer Relations & Communications	Apr 28, 2023
Intern - Zero Waste	Apr 20, 2023
Intern-Geographic Information Systems	Apr 20, 2023
Intern-Project CAD Operator	Apr 20, 2023
Intern - GIS Facilities Information Resources (FIR)	Apr 20, 2023

professional opportunities and student internships. Check the links below for presently available civil service positions.

Bookmark this page to view future academic

If you have any questions about the Building Service Worker positions, you may contact the departments at fandsjobs@illinois.edu or 217-244-7797. If you have questions about the application process or the civil service testing process please contact Illinois Human Resources at 217-333-2137.

CONTACT INFORMATION

<https://archive.fs.illinois.edu/about-us/job-opportunities>

WHAT DO YOU THINK?

1. What does the phrase “zero waste” mean to you?
2. What do you think the biggest opportunities for waste reduction are on campus (organic, water, energy, plastic, spatial, etc.)?
3. How might the different actors on campus (students, faculty, staff, administrators, researchers, leaders) play different roles in achieving our iCAP objectives?
4. What aspects of waste sustainability do you find most important or relevant in your own life?