



ZERO WASTE AT THE UNIVERSITY OF ILLINOIS



Institute for Sustainability, Energy, and Environment (iSEE)

UNIVERSITY OF ILLINOIS URBANA-CHAMPAIGN



Facilities & Services

UNIVERSITY OF ILLINOIS URBANA-CHAMPAIGN

NICE TO MEET YOU!



Daphne Hulse
Zero Waste Coordinator
Facilities & Services

dlhulse2@illinois.edu

O: +1 (217) 333-7550



**Institute for Sustainability, Energy, and
Environment (iSEE)**

UNIVERSITY OF ILLINOIS URBANA-CHAMPAIGN



Facilities & Services

UNIVERSITY OF ILLINOIS URBANA-CHAMPAIGN

AGENDA

1. Trusted Messengers

- Who do we listen to on issues of sustainability?
- Why is climate change communication so important?

2. Campus Waste Management

- Take a visit to the Waste Transfer Station.
- Consider the lifecycle of a plastic bottle.

3. Illinois Climate Action Plan

- Zero Waste objectives, successes, ambitions, & challenges.

4. Building-Level Considerations

- Building occupant knowledge of campus waste & recycling.
- Landfill and recycling bin placement, look & standardization.
- Opportunities for waste reduction.

5. Calls to Action

- Ways for students to get involved.
- An individual's spheres of influence.

TRUSTED MESSENGERS

“

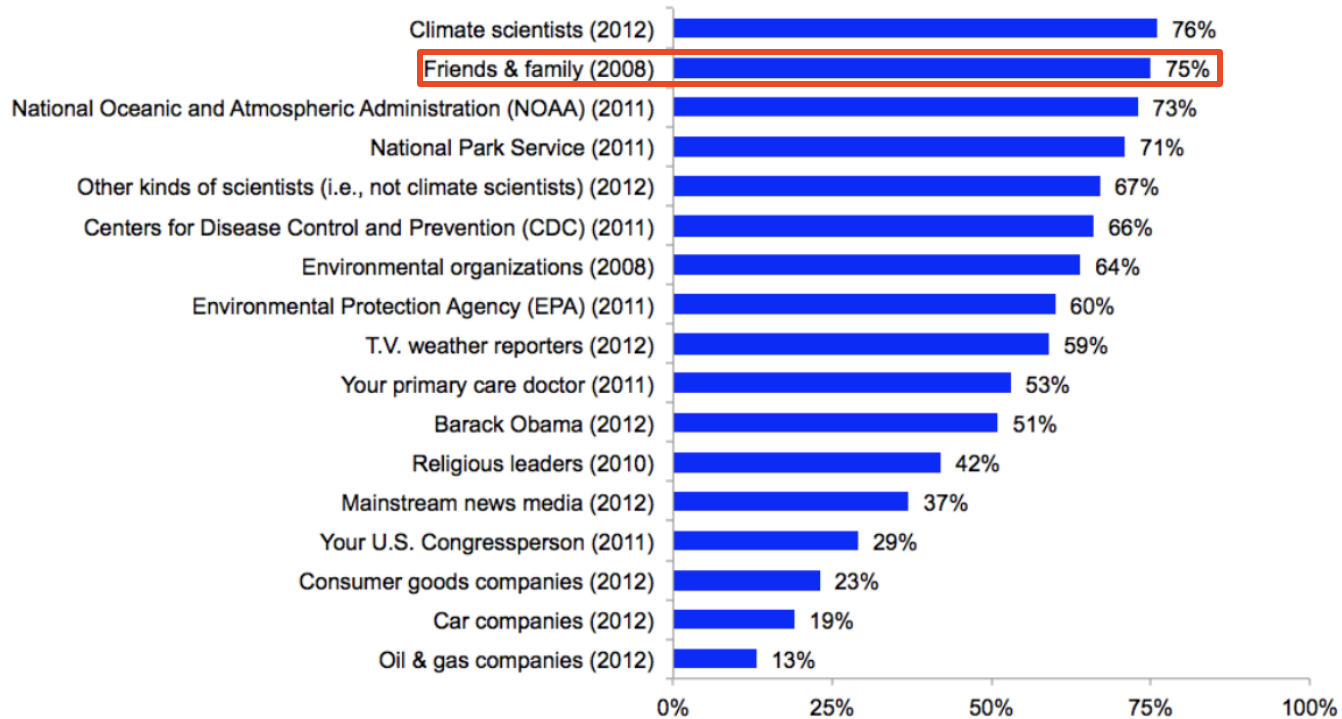
Climate change is a challenging issue to convey. One reason lies in the fact that its principal culprits—carbon dioxide and other heat-trapping greenhouse gases—are colorless, odorless gases, and the long-term average changes set in motion by them have emerged only recently from the daily, seasonal, and interannual ‘noise’ of variability. Relative to human perceptual capacities, the problem is building far too slowly to be noticed by the lay eye, and the early environmental impacts of climate change have mostly occurred (and are clearly noticed) in regions far from where the majority of mid-latitudinal audiences live. The lack of direct experience makes climate change—at least for now—fundamentally a problem that requires signaling, illustrating, and explaining by those who have expert knowledge to those who don’t. Communication is essential.

”

TRUSTED MESSENGERS

Americans Trust Climate Scientists, Friends & Family Most As Sources Of Information About Global Warming

- % of Americans who strongly or somewhat trust... -



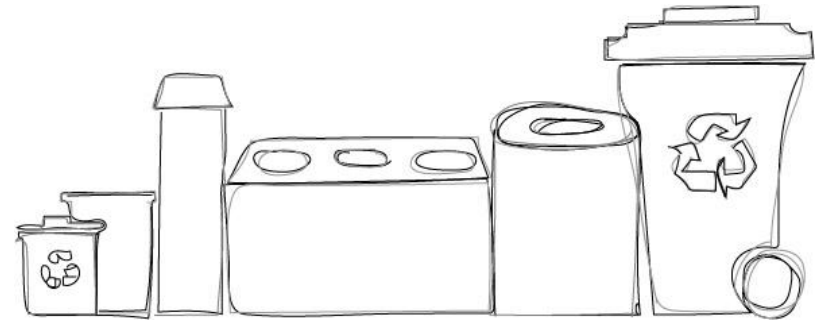
How much do you trust or distrust the following as a source of information about global warming?

Base: Americans 18+.



George Mason University
Center for Climate Change Communication

CAMPUS WASTE MANAGEMENT



**Institute for Sustainability, Energy, and
Environment (iSEE)**

UNIVERSITY OF ILLINOIS URBANA-CHAMPAIGN



Facilities & Services

UNIVERSITY OF ILLINOIS URBANA-CHAMPAIGN

1 COLLECTION + ENGAGEMENT



1 COLLECTION + ENGAGEMENT



2 TRANSPORT + HAULING



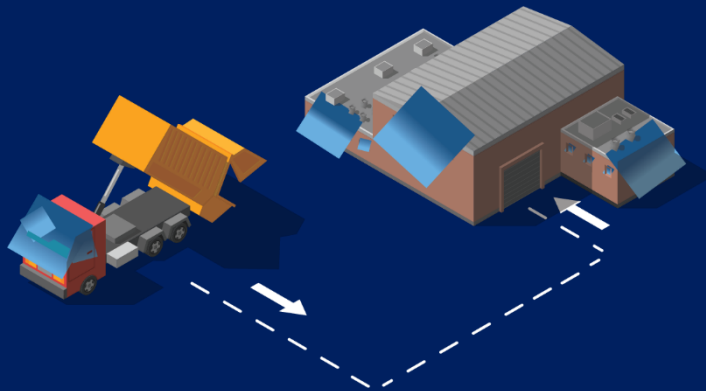
1 COLLECTION + ENGAGEMENT



2 TRANSPORT + HAULING



3 TRANSFER + RECORDING



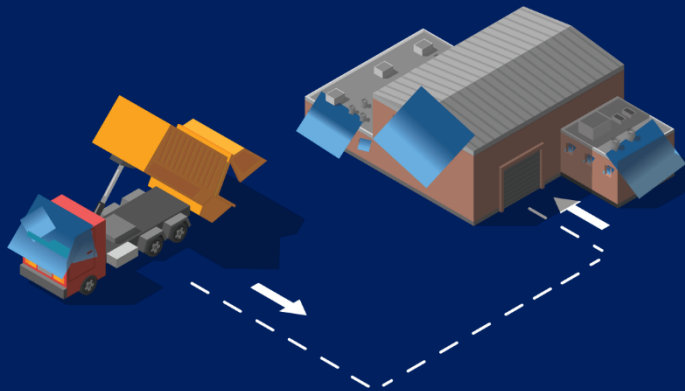
1 COLLECTION + ENGAGEMENT



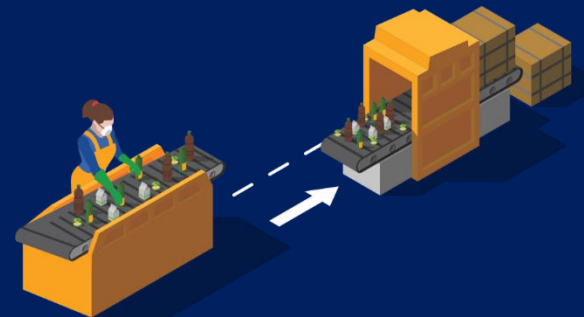
2 TRANSPORT + HAULING



3 TRANSFER + RECORDING



4 SORTING + RECOVERY



1 COLLECTION + ENGAGEMENT



RECYCLING



1 COLLECTION + ENGAGEMENT



RECYCLING

1. Plastic 1 (PETE) + 2 (HDPE)
 - Check the bottom of the container
2. Aluminum Cans
3. Paper
 - Office paper, magazines, manila & file folders, envelopes, newspaper, junk mail, phone books, sticky notes, books
4. Cardboard
5. Scrap Metals
 - Copper, conduit, metal shelving

1 COLLECTION + ENGAGEMENT



NON-RECYCLABLES



1 COLLECTION + ENGAGEMENT



NON-RECYCLABLES

1. Plastic-lined Paper Cups
 - Single-use coffee cups
2. Plastic Bags
3. Materials soiled by food
 - Pizza boxes
4. Styrofoam
5. Paper Towels + Napkins
6. Glass
7. Receipts
8. Steel or tin cans
 - Soup cans

1 COLLECTION + ENGAGEMENT



STANDARDIZING



BAG COLORS



BINS

1 COLLECTION + ENGAGEMENT

REPLACING



2 HAULING + TRANSPORT



SWING PAN



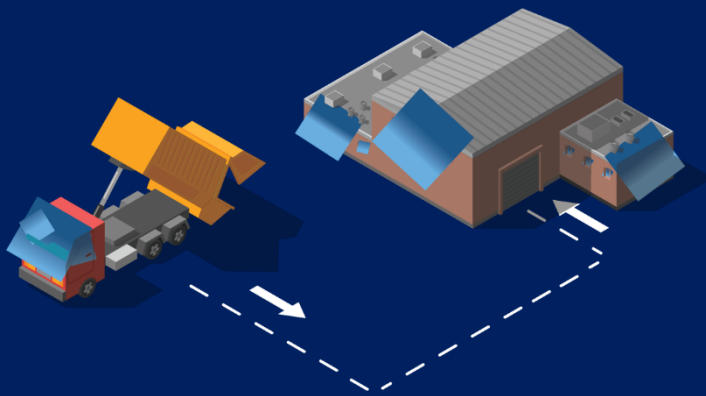
ROLL OFF



FRONT LOAD + TOTE



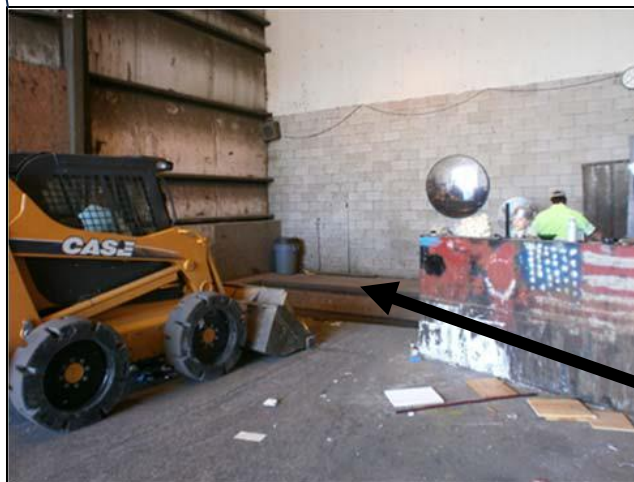
3 TRANSFER + RECORDING



📍 NORTH BAY

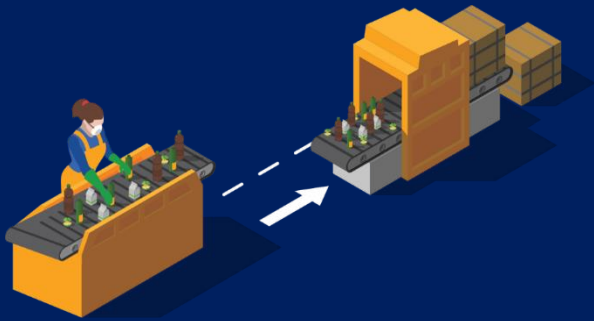


📍 SOUTH BAY



**INFEEED
BELT**

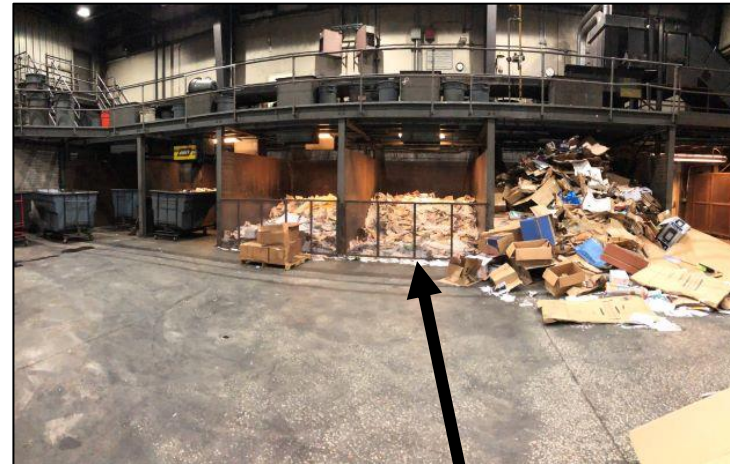
4 SORTING + RECOVERY



📍 SORTING FLOOR

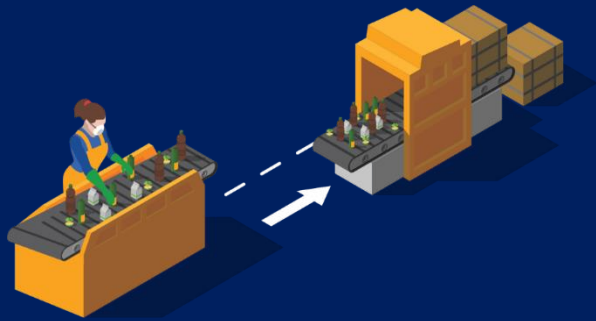


SORTING LINE



FLOOR + BAYS

4 SORTING + RECOVERY

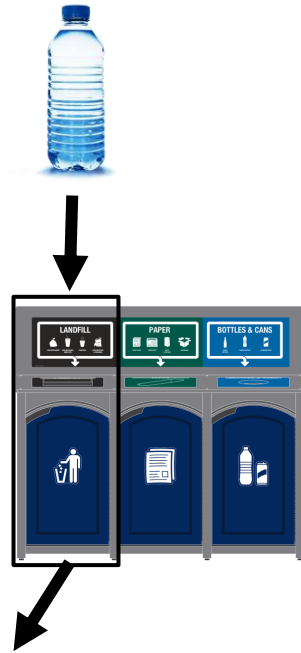


📍 SORTING FLOOR BALING



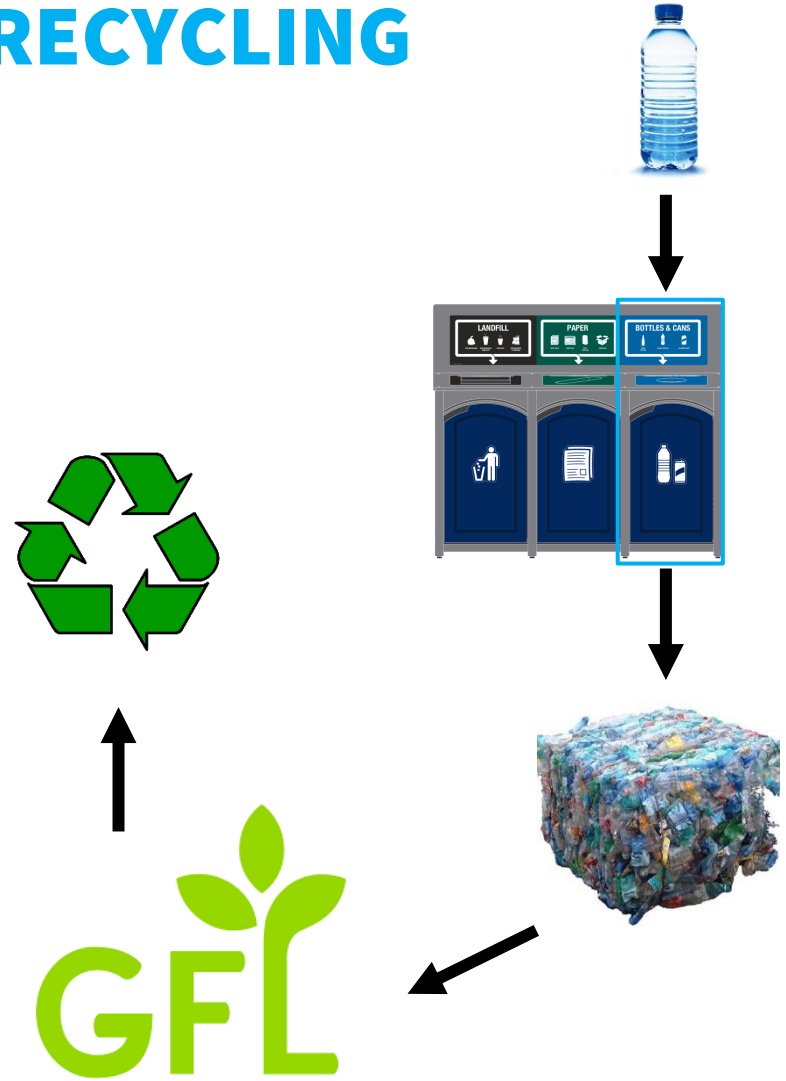
THE PLASTIC BOTTLE

LANDFILL



CLINTON, IL

RECYCLING



WASTE TRANSFER STATION





2020 ILLINOIS CLIMATE ACTION PLAN



**Institute for Sustainability, Energy, and
Environment (iSEE)**

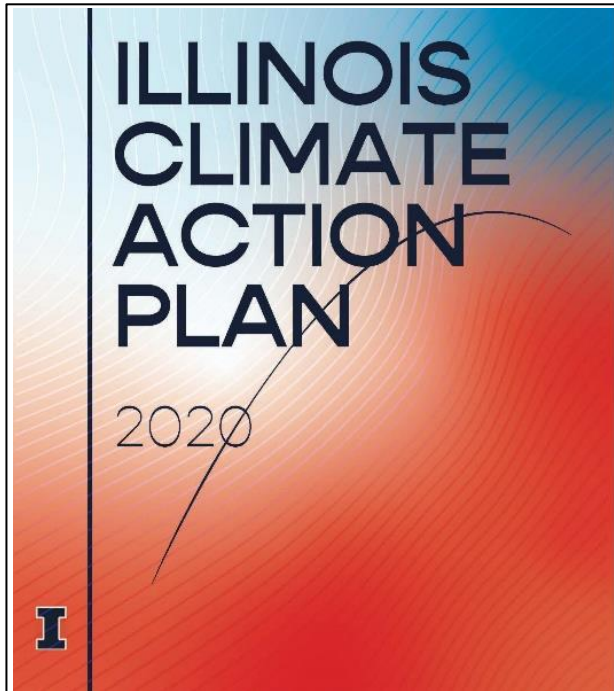
UNIVERSITY OF ILLINOIS URBANA-CHAMPAIGN



Facilities & Services

UNIVERSITY OF ILLINOIS URBANA-CHAMPAIGN

ZERO WASTE OBJECTIVES



5.1

5.2

5.3

5.4

5.5

5.6

5.7



Institute for Sustainability, Energy, and Environment (iSEE)

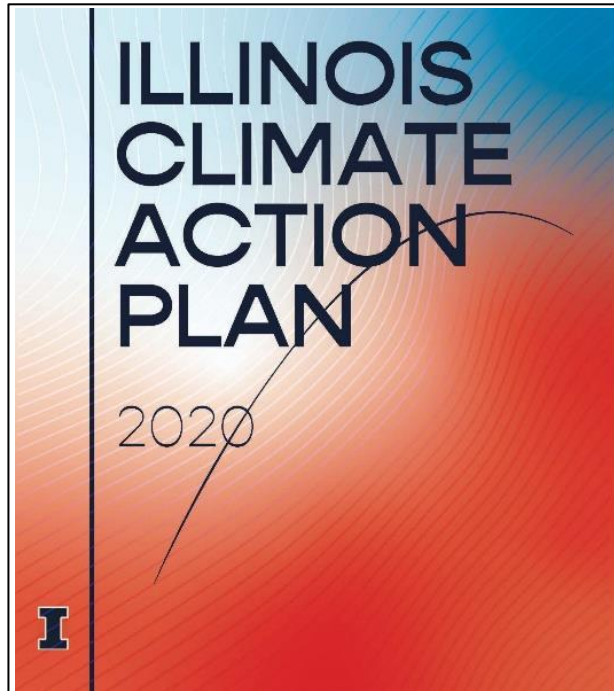
UNIVERSITY OF ILLINOIS URBANA-CHAMPAIGN



Facilities & Services

UNIVERSITY OF ILLINOIS URBANA-CHAMPAIGN

ZERO WASTE OBJECTIVES



- 5.1 Sustainable Procurement Reports
- 5.2 Reduce Landfilled Waste
- 5.3 Establish a Culture of Reuse
- 5.4 Reduce Food Scraps
- 5.5 Plan for Organic Waste
- 5.6 Use Local Food
- 5.7 Green Cleaning Program



Institute for Sustainability, Energy, and Environment (iSEE)

UNIVERSITY OF ILLINOIS URBANA-CHAMPAIGN



Facilities & Services

UNIVERSITY OF ILLINOIS URBANA-CHAMPAIGN

ZERO WASTE SUCCESSES



**UNIVERSITY DINING:
GRIND2ENERGY**

ZERO WASTE SUCCESSES



ZERO WASTE SUCCESSES



**Fighting Illini,
Fighting Waste**

November 14
Illinois Basketball vs Monmouth

In partnership with
ILLINOIS
ATHLETICS

Coca-Cola **I** Institute for Sustainability,
Energy, and Environment (ISEE) **I** Facilities & Services
UNIVERSITY OF ILLINOIS URBANA-CHAMPAIGN

**CERTIFIED
GREEN EVENT
2022**

**iSEE, ATHLETICS, F&S, & COCA-COLA:
“FIGHTING ILLINI, FIGHTING WASTE”**

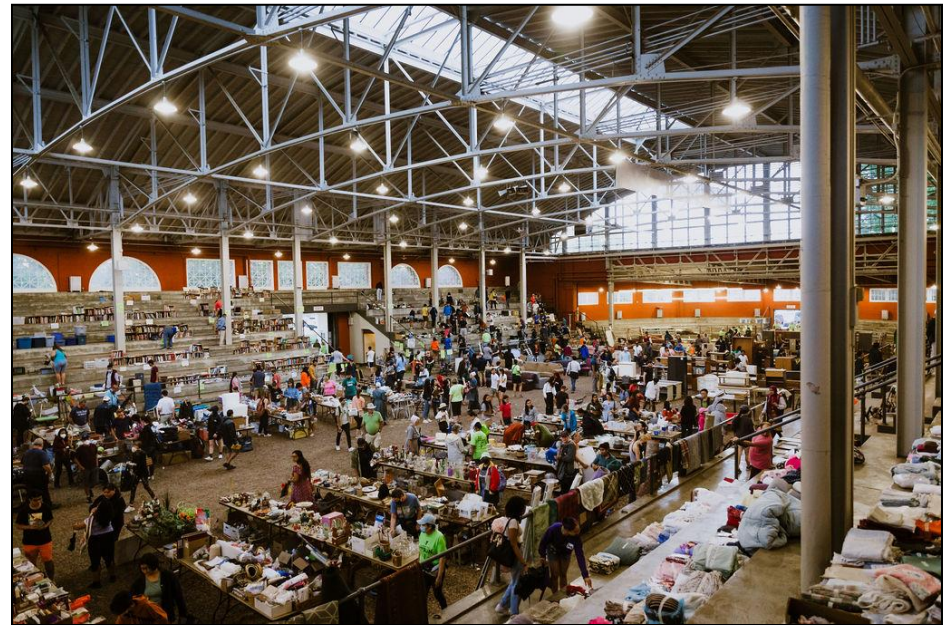
ZERO WASTE SUCCESSES



ZERO WASTE AMBITIONS



TAILGATING



SPRING MOVE OUT

ZERO WASTE CHALLENGES



**CAMPUS-WIDE
PLASTIC & FOOD WASTE**



BUILDING-LEVEL CONSIDERATIONS



**Institute for Sustainability, Energy, and
Environment (iSEE)**

UNIVERSITY OF ILLINOIS URBANA-CHAMPAIGN



Facilities & Services

UNIVERSITY OF ILLINOIS URBANA-CHAMPAIGN

BUILDING OVERVIEW

1. Who does the building serve?
2. What activity happens inside the building?
3. Where is the building located on campus?
 1. What is the relative foot traffic of this facility?
4. What does the space look like inside and outside?
 1. Are the hallways narrow? Is there a common area?
5. Who are the consistent building occupants?
 1. Staff, faculty offices
 2. Recurring classes

BUILDING OCCUPANTS

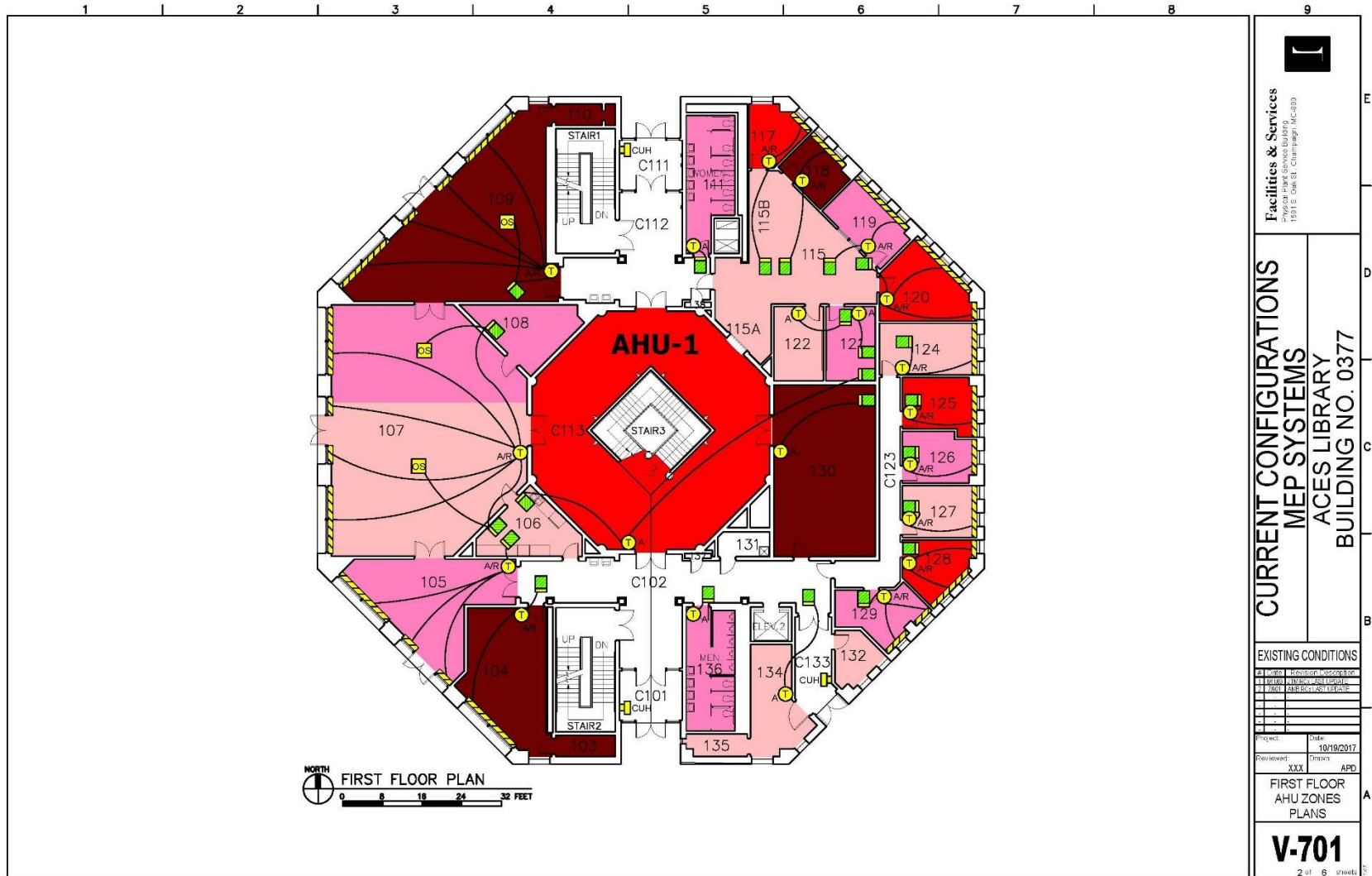
1. What are the demographics of the building occupants?
 1. Students, faculty, staff, community members
2. What do the building occupants know about campus waste management?
 1. Assess knowledge formally (survey, focus group) or informally (anecdotes from staff, faculty)

BIN LOCATION & LOOK

1. What do the interior and exterior bins look like?
 1. Do they follow campus' bin standards?
2. How many bins are there in total?
3. Are landfill and recycling bins always paired?
4. Are blue plastic bags used for recycling, clear for common areas, black for bathrooms/labs/cafes?
5. Is it clear what should be placed in any given bin?



FLOOR PLAN



NORTH
FIRST FLOOR PLAN
0 8 16 24 32 FEET

Facilities & Services
1801 S Oak St, Champaign, IL 61820

E

D

C

B

A

CURRENT CONFIGURATIONS
MEP SYSTEMS
ACES LIBRARY
BUILDING NO. 0377

E

D

C

B

A

EXISTING CONDITIONS	
<input type="checkbox"/>	MECHANICAL SYSTEMS
<input type="checkbox"/>	ELECTRICAL SYSTEMS
<input type="checkbox"/>	PLUMBING SYSTEMS
<input type="checkbox"/>	ACROUSTIC SYSTEMS
<input type="checkbox"/>	OTHER

Project:	Date:
10/19/2017	
Reviewed:	Drawn:
XXX	APD

FIRST FLOOR
AHU ZONES
PLANS

V-701
2 of 6 sheets

OPPORTUNITY ASSESSMENT

1. What other ways can we think outside the box to reduce landfilled waste or increase recycling?
 1. Assess water availability for those with reusable bottles: are there water bottle filling stations?
 2. What specialty recycling could the building look into?

CALLS TO ACTION

1. Be the leader you want to see within your social and professional networks!
2. Challenge: Start to think of recycling as a *last resort*. What one product can you instead start to refuse?

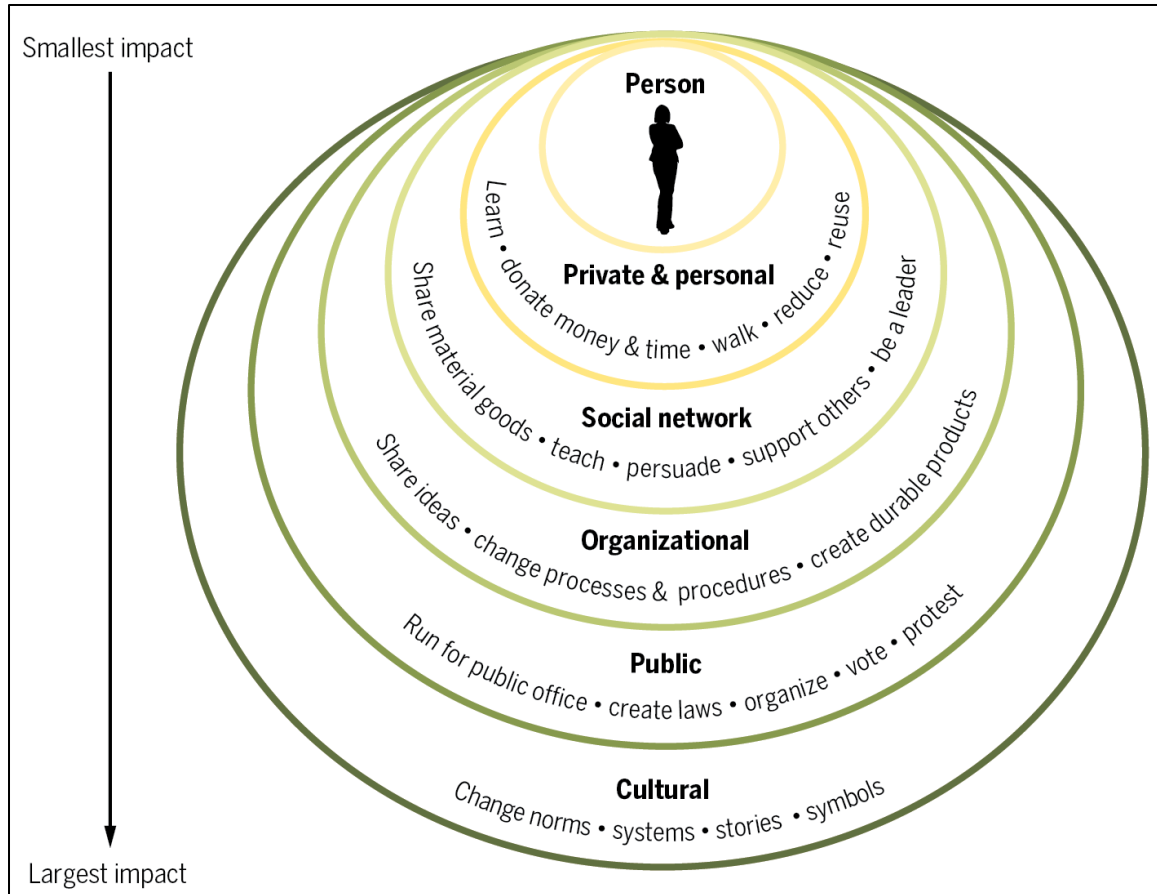


Fig 1. An individual's spheres of influence.
Individual actions have the greatest effect when they influence broader systems.

INTERESTED IN JOINING A COLLECTIVE EFFORT?

Student Sustainability Committee's Food + Waste Team



sustainability-committee@illinois.edu



Project4Less

projectforless@gmail.com



Illini Lights Out

iseeinterns@gmail.com



Fighting Illini, Fighting Waste

dlhulse2@illinois.edu