



ESTABLISHING A CULTURE OF ZERO WASTE



**Institute for Sustainability, Energy, and
Environment (iSEE)**

UNIVERSITY OF ILLINOIS URBANA-CHAMPAIGN



Facilities & Services

UNIVERSITY OF ILLINOIS URBANA-CHAMPAIGN

NICE TO MEET YOU!



Daphne Hulse
Zero Waste Coordinator
Facilities & Services

dlhulse2@illinois.edu

O: +1 (217) 333-7550



**Institute for Sustainability, Energy, and
Environment (iSEE)**

UNIVERSITY OF ILLINOIS URBANA-CHAMPAIGN



Facilities & Services

UNIVERSITY OF ILLINOIS URBANA-CHAMPAIGN

AGENDA

1. F&S + iSEE Overview

- How we work together

2. Trusted Messengers

3. Campus Waste Management

- 4-step process

4. Lifecycle of a Plastic Bottle

5. Illinois Climate Action Plan

- Zero waste objectives, successes, ambitions, + challenges

6. Calls to Action

- An individual's spheres of influence

WHAT IS F&S?

Provides all physical plant, operational, and essential services for sustaining an environment that fosters the research, teaching, and public engagement activities at Illinois.

- Sustainable Transportation
- Resilient Grounds and Landscapes
- Zero Waste and Recycling
- Clean and Renewable Energy
- Energy Conservation
- LEED Certifications
- Green Stormwater Infrastructure
- Sustainability Education and Behavior Change
- Academic and Research Collaborations



Institute for Sustainability, Energy, and Environment (iSEE)

UNIVERSITY OF ILLINOIS URBANA-CHAMPAIGN



Facilities & Services

UNIVERSITY OF ILLINOIS URBANA-CHAMPAIGN

WHAT IS iSEE?

*The Institute is purposed to find solutions for the ever-growing demand for food, water, and energy while ensuring a safe, productive, and sustainable environment for all global citizens through research, campus sustainability, and education and outreach. **The overarching goal: to become a global model of sustainability by creating effective, positive change.***

- 2020 Illinois Climate Action Plan (iCAP)
- iCAP Teams
- iCAP Portal
- Certified Greener Campus Programs
- Illini Lights Out
- TED Talk: Eco-Edition Series
- Trash Pickup Events
- Composting
- Liaise with the Student Sustainability Committee (SSC)



Institute for Sustainability, Energy, and Environment (iSEE)

UNIVERSITY OF ILLINOIS URBANA-CHAMPAIGN



Facilities & Services

UNIVERSITY OF ILLINOIS URBANA-CHAMPAIGN

TRUSTED MESSENGERS

“

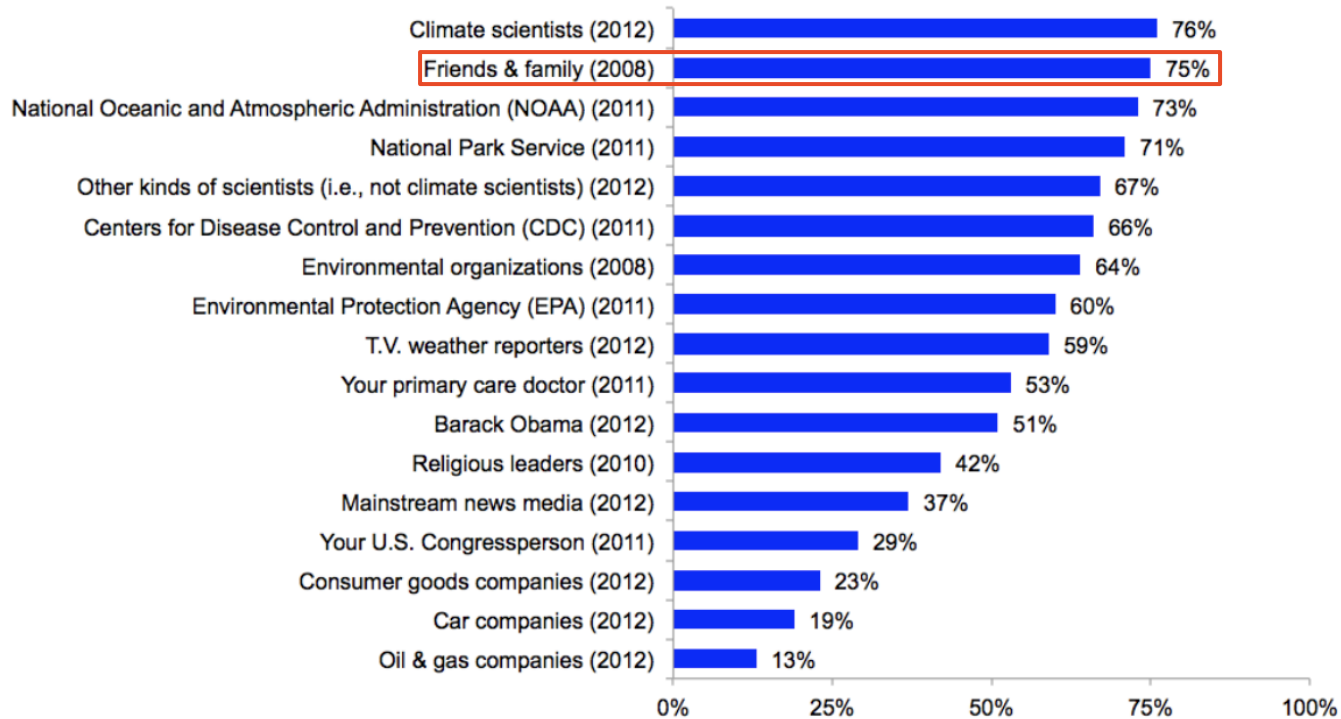
Climate change is a challenging issue to convey. One reason lies in the fact that its principal culprits—carbon dioxide and other heat-trapping greenhouse gases—are colorless, odorless gases, and the long-term average changes set in motion by them have emerged only recently from the daily, seasonal, and interannual ‘noise’ of variability. Relative to human perceptual capacities, the problem is building far too slowly to be noticed by the lay eye, and the early environmental impacts of climate change have mostly occurred (and are clearly noticed) in regions far from where the majority of mid-latitudinal audiences live. The lack of direct experience makes climate change—at least for now—fundamentally a problem that requires signaling, illustrating, and explaining by those who have expert knowledge to those who don’t. Communication is essential.

”

TRUSTED MESSENGERS

Americans Trust Climate Scientists, Friends & Family Most As Sources Of Information About Global Warming

- % of Americans who strongly or somewhat trust... -



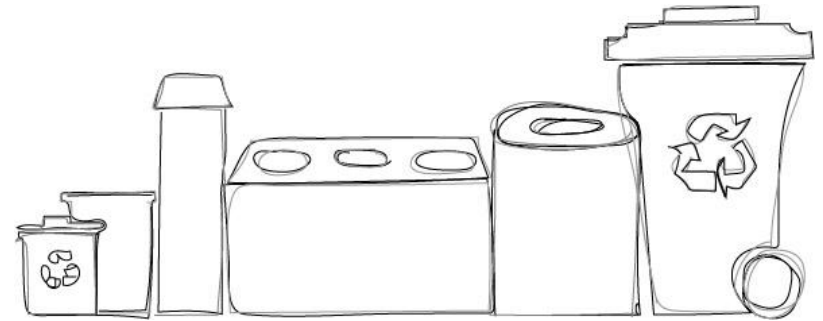
How much do you trust or distrust the following as a source of information about global warming?

Base: Americans 18+.



George Mason University
Center for Climate Change Communication

CAMPUS WASTE MANAGEMENT



**Institute for Sustainability, Energy, and
Environment (iSEE)**

UNIVERSITY OF ILLINOIS URBANA-CHAMPAIGN



Facilities & Services

UNIVERSITY OF ILLINOIS URBANA-CHAMPAIGN

1 COLLECTION + ENGAGEMENT



1 COLLECTION + ENGAGEMENT



2 TRANSPORT + HAULING



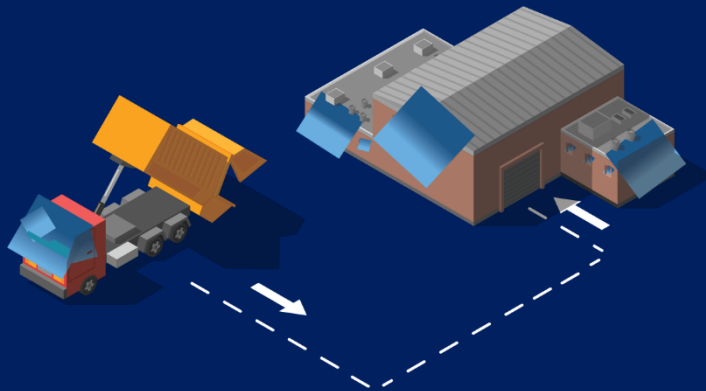
1 COLLECTION + ENGAGEMENT



2 TRANSPORT + HAULING



3 TRANSFER + RECORDING



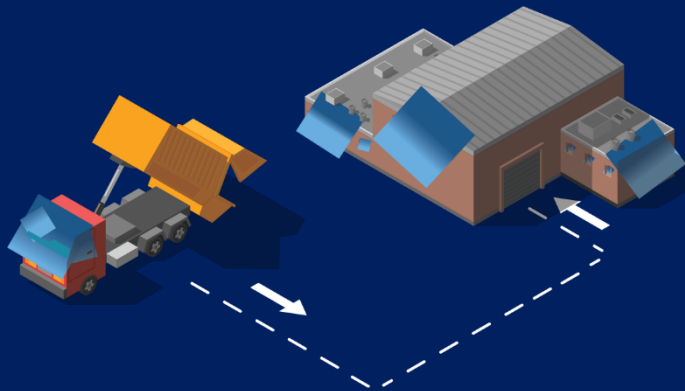
1 COLLECTION + ENGAGEMENT



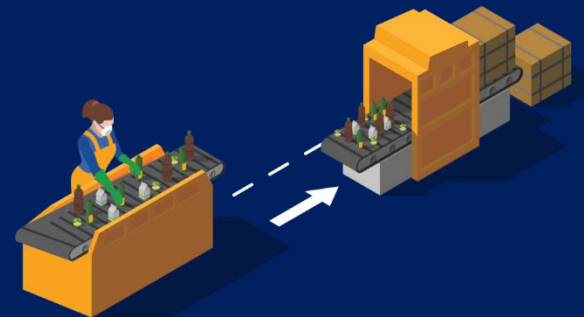
2 TRANSPORT + HAULING



3 TRANSFER + RECORDING



4 SORTING + RECOVERY



1 COLLECTION + ENGAGEMENT



RECYCLING



1 COLLECTION + ENGAGEMENT



RECYCLING

1. Plastic 1 (PETE) + 2 (HDPE)
 - Check the bottom of the container
2. Aluminum Cans
3. Paper
 - Office paper, magazines, manila & file folders, envelopes, newspaper, junk mail, phone books, sticky notes
4. Cardboard
5. Scrap Metals
 - Copper, conduit, metal shelving

1 COLLECTION + ENGAGEMENT



NON-RECYCLABLES



1 COLLECTION + ENGAGEMENT



NON-RECYCLABLES

1. Paper Cups
 - Coffee cups
2. Plastic Bags
3. Greasy Cardboard
 - Pizza boxes
4. Styrofoam
5. Paper Towels + Napkins
6. Glass
7. Receipts

1 COLLECTION + ENGAGEMENT



STANDARDIZING



BAG COLORS



BINS

1 COLLECTION + ENGAGEMENT

REPLACING



2 HAULING + TRANSPORT



SWING PAN



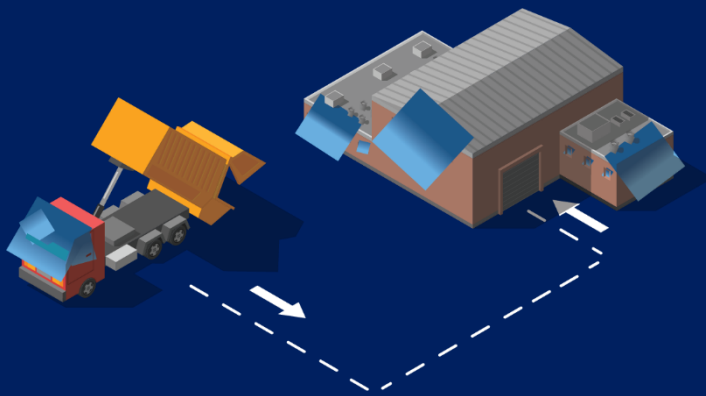
ROLL OFF



FRONT LOAD + TOTE



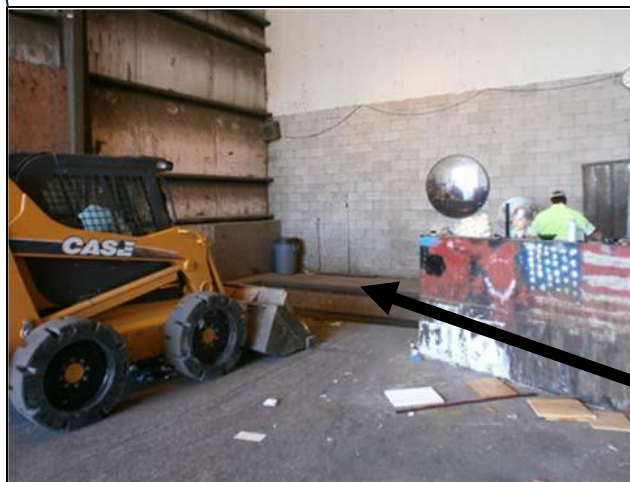
3 TRANSFER + RECORDING



 **NORTH BAY**

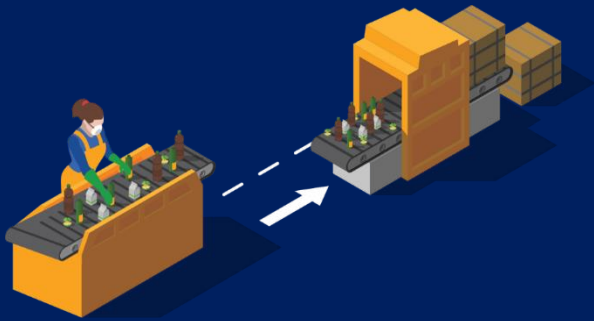


 **SOUTH BAY**

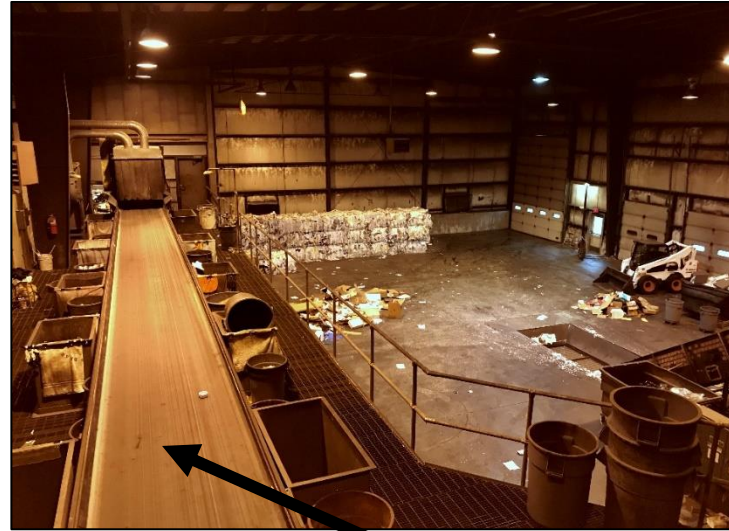


**INFEEED
BELT**

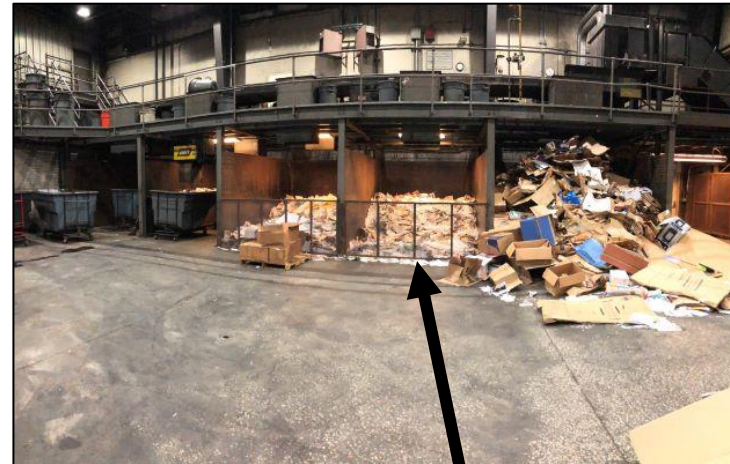
4 SORTING + RECOVERY



📍 SORTING FLOOR

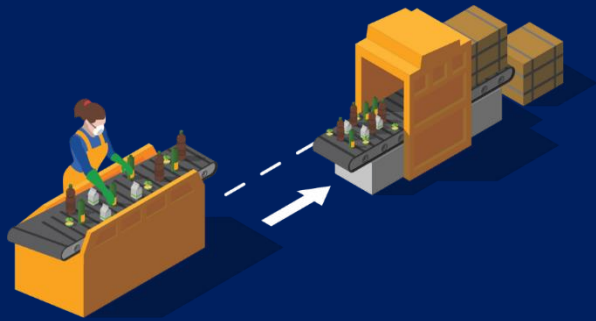


SORTING LINE



FLOOR + BAYS

4 SORTING + RECOVERY



📍 SORTING FLOOR BALING

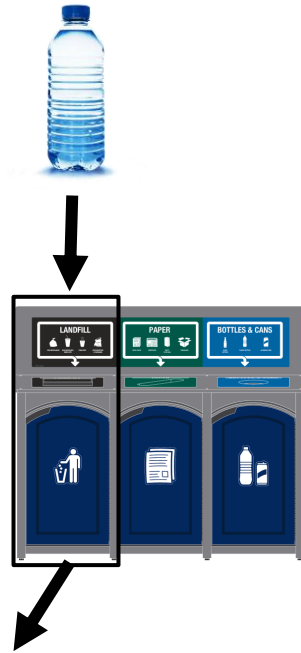


THE
LIFE CYCLE
OF A
PLASTIC
BOTTLE



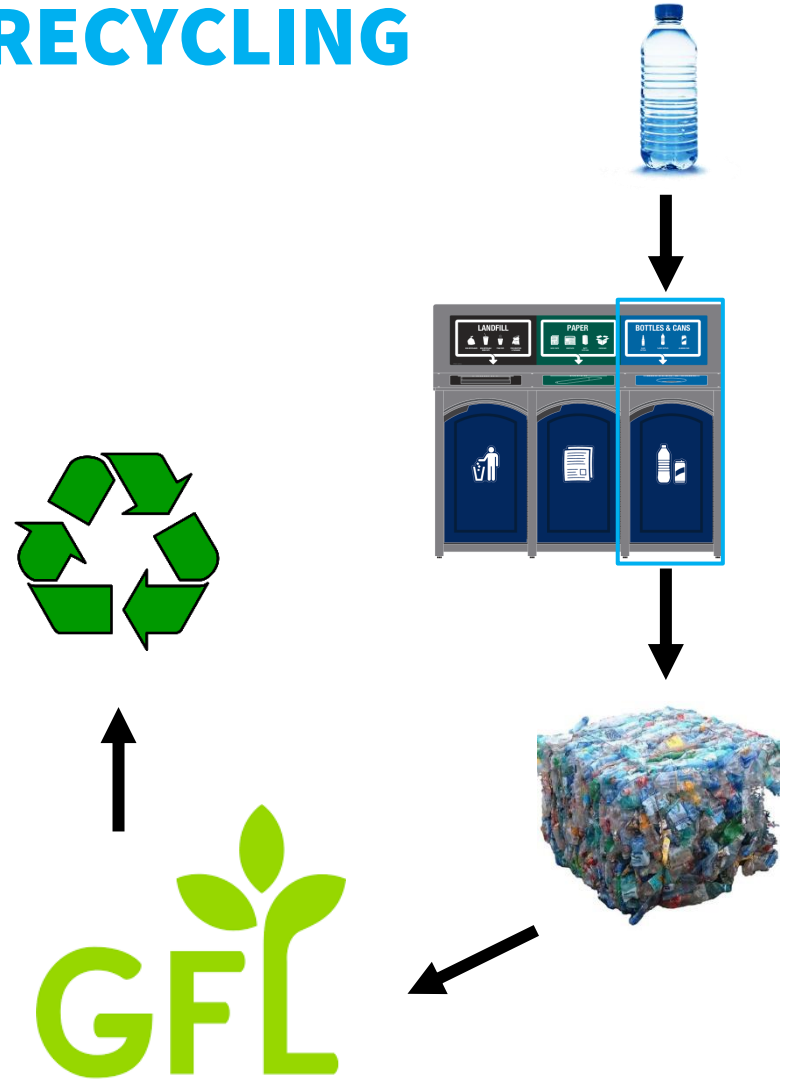
THE PLASTIC BOTTLE

LANDFILL



CLINTON, IL

RECYCLING





2020 ILLINOIS CLIMATE ACTION PLAN



**Institute for Sustainability, Energy, and
Environment (iSEE)**

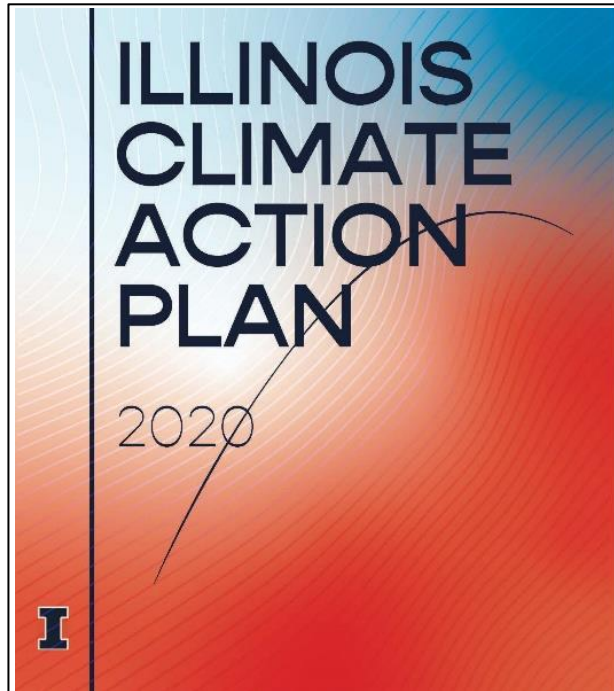
UNIVERSITY OF ILLINOIS URBANA-CHAMPAIGN



Facilities & Services

UNIVERSITY OF ILLINOIS URBANA-CHAMPAIGN

ZERO WASTE OBJECTIVES



- 5.1 Sustainable Procurement Reports
- 5.2 Reduce Landfilled Waste
- 5.3 Establish a Culture of Reuse
- 5.4 Reduce Food Scraps
- 5.5 Plan for Organic Waste
- 5.6 Use Local Food
- 5.7 Green Cleaning Program



**Institute for Sustainability, Energy, and
Environment (iSEE)**

UNIVERSITY OF ILLINOIS URBANA-CHAMPAIGN



Facilities & Services

UNIVERSITY OF ILLINOIS URBANA-CHAMPAIGN

ZERO WASTE SUCCESSES

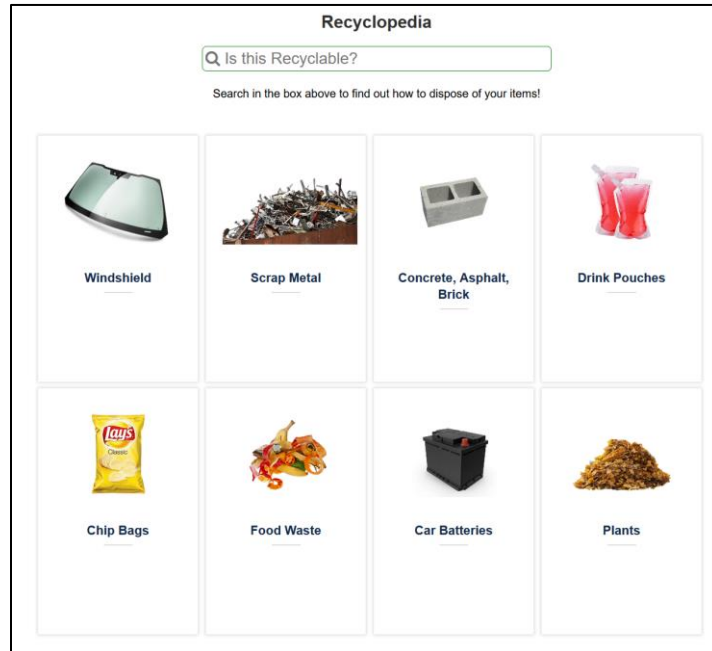


**UNIVERSITY DINING:
GRIND2ENERGY**



**F&S + YMCA +
UNIVERSITY HOUSING:
DUMP & RUN**

ZERO WASTE AMBITIONS



F&S: RECYCLOPEDIA



COCA-COLA: ZERO WASTE ATHLETICS EVENT

ZERO WASTE CHALLENGES



**ATHLETICS +
TAILGATING**



FOOD WASTE

CALLS TO ACTION

1. Be the leader you want to see within your social and professional networks!
2. Challenge: Start to think of recycling as a **last resort**.
What one product can you instead start to refuse?

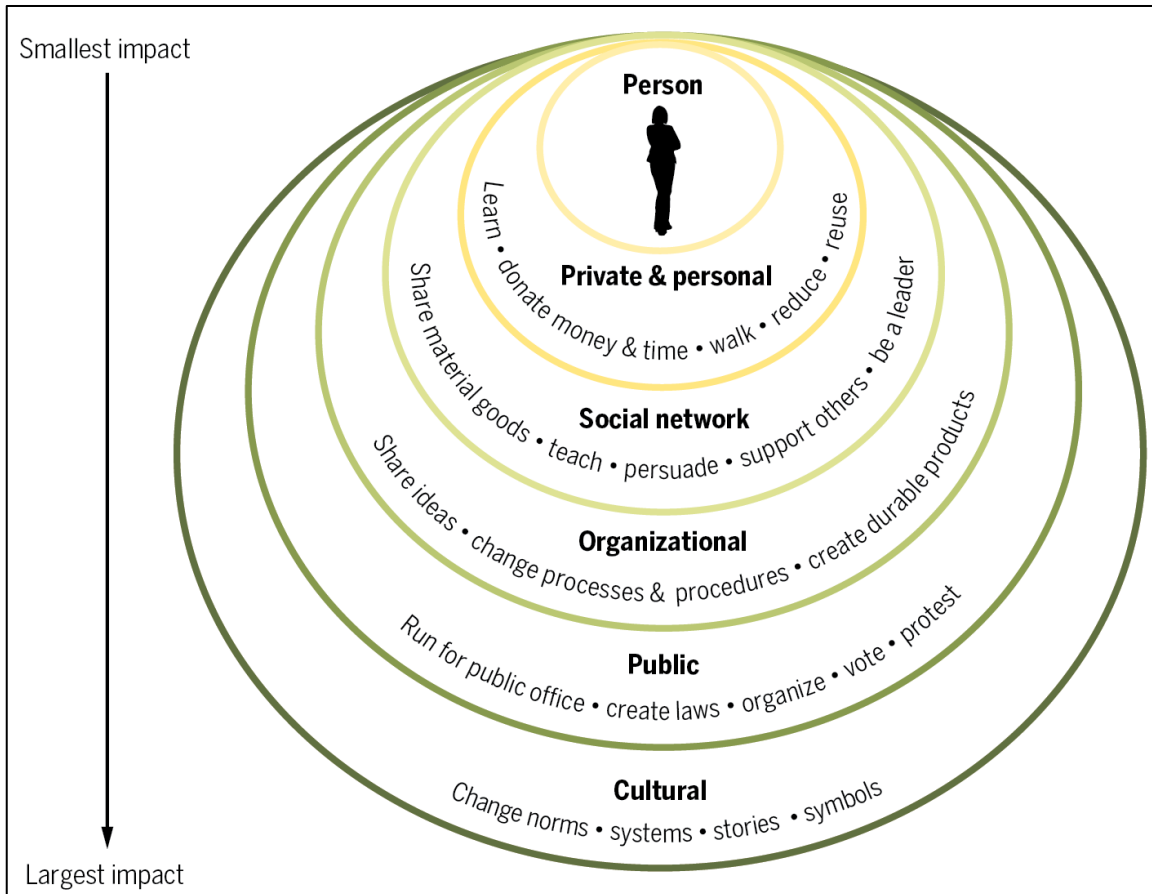


Fig 1. An individual's spheres of influence.
 Individual actions have the greatest effect when they influence broader systems.

INTERESTED IN JOINING A COLLECTIVE EFFORT?

Join the Student Sustainability
Committee's Food + Waste Team!

sustainability-committee@illinois.edu