



# Sustainability Best Practices

---

The University of Illinois Urbana-Champaign

# Sustainability Best Practices Guide

*Learn how to get involved and stay informed*



## BACKGROUND

Overview of campus sustainability and achievements



## GET INVOLVED

Sustainability groups and organizations



## THINGS TO DO AT HOME

Tips for living a more sustainable lifestyle



## COMMON MISCONCEPTIONS

Common misconceptions about sustainability - debunked!



## RESOURCES

A list of websites to explore and learn more



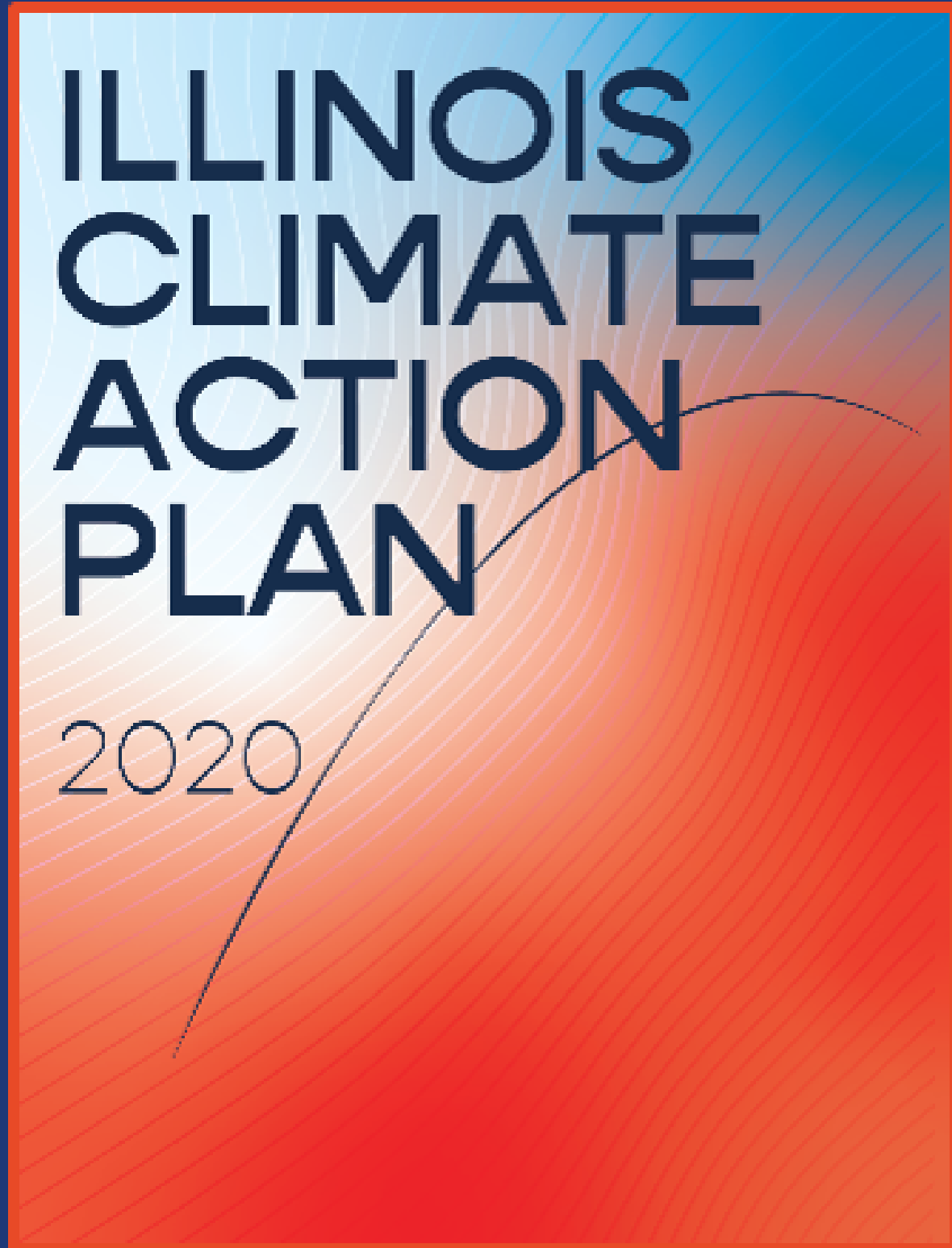


**iSEE**

# Background

---





---

We have been committed to sustainability since 2008, when the University of Illinois at Urbana-Champaign signed a pledge to achieve Net Carbon Neutrality no later than 2050!

**Don't Panic!  
There's a Plan.**

The iCAP is the campus' action-oriented sustainability manual, renewed every five years since the original in 2010.

---



# Accomplishments and Recognitions



The University of Illinois has taken many steps to make sustainability a priority on campus, and these are a few of the awards that the university has been given to recognize this effort. More accomplishments and recognitions can be found [here](#)

HOST  
INSTITUTION FOR  
CABBI

LEED  
CERTIFICATIONS

TREE CAMPUS  
USA

BICYCLE  
FRIENDLY  
UNIVERSITY

STARS GOLD  
LEVEL  
CERTIFICATION

INTERNATIONAL  
FREEZER  
CHALLENGE  
CHAMPIONS

SIERRA CLUB  
COOL SCHOOL

BEE CAMPUS  
USA



**iSEE**

# Get Involved

---



# Registered Student Organizations

Build A Sustainable World. Together. Find more organizations [here](#).

## EDUCATION

### Hispanic Organization of Urban Studies and the Environment (HOUSE)

Promotes Latinx involvement in Sustainable Architecture, and Urban Planning

### Institute for Solar Photovoltaic Innovation, Research, and Edu-training (InSPIRE)

Promotes R&D, education, and workforce training within the renewable energy industry

## ENGAGEMENT

### Epsilon Eta

An Environmental Honors Fraternity

### Act Green

Creates educational programming and workshops to empower the next generation of global business leaders

## ENERGY

### Energy and Environment Law Society

Enhances the community's awareness of energy and environmental law issues

### Illinois Solar Decathlon

Students design and build full-size solar-powered homes

## LAND

### Sustainable Student Farm

Educates students in basic skills and concepts involved in organic food production.

### Red Bison Ecological Restoration

Works to restore Illinois' prairies and woodlands to maintain biological diversity around campus

## WATER

### UIUC Illini Algae

Promotes and advances algae-based technologies

### Water Environment Federation - American Water Works Association (WEF-AWWA)

Offers students an opportunity to learn about water challenges around the world



# Registered Student Organizations

Build A Sustainable World. Together. Find more organizations [here](#).

## RESILIENCE

### Illinois Enactus

Uses the power of entrepreneurial action to shape a better, more sustainable world.

### Business in Environmental Responsibility

Aims to create a sustainable environment for business

## TRANSPORTATION

### Eco Illini Supermileage

Designs, develops, and manufactures an energy efficient prototype vehicle.

### Illini Solar Car

Student-led operation to build solar powered cars

## ZERO WASTE

### Project 4 Less

Supports local food retailers in redistributing unconsumed meals to those facing food insecurity.

### The Recyclops Club

Focuses on engaging students in the art of recycling in the Champaign-Urbana by doing weekly cleanups

## RECREATION

### Alternative Spring Breaks

Offers opportunities to travel, learn, and grow during your school break

### Outdoor Adventure Club

Nature oriented club with outdoor adventures planned and facilitated by students

## ENVIRONMENTAL WRITING

### Q Magazine

A professionally curated, student-led environmental magazine

### Green Observer

A quarterly, student-run magazine intended to inform students of campus environmental news





## iCAP Teams

### Themes of Illinois Climate Action Plan (iCAP)

*Teams of students, faculty, and staff that work to support and recommend actions to support iCAP goals*

#### EDUCATION

Seeks to add to the educational experience with interdisciplinary learning, research, and independent study about sustainability, energy, and the environment



#### ENERGY

Examines both energy generation and purchasing as well as conservation and building standards

- Geothermal Campus
- Solar Farms
- Biomass Boiler
- Illini Lights Out



#### ENGAGEMENT

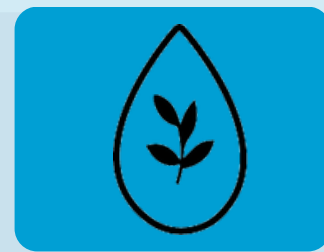
Communicates and enhances an evolving culture of sustainability and work to promote programs, outreach events, and involvement opportunities.



#### LAND & WATER

Examines land use, agriculture on campus, carbon sequestration, water, and storm water issues

- Illinois Gallon Water Challenge



#### RESILIENCE

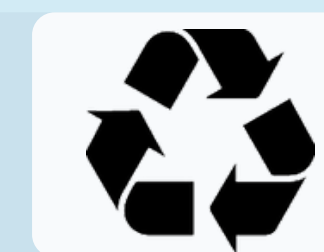
Addresses what must be done to prepare for vulnerabilities to extreme weather and other results of climate change



#### ZERO WASTE

Examines sustainable purchasing, waste disposal, recycling, and campus dining

- 99.9% of UIUC light bulbs recycled



#### TRANSPORTATION

Makes progress in implementing a new campus bike plan and promoting carpooling and teleconferencing





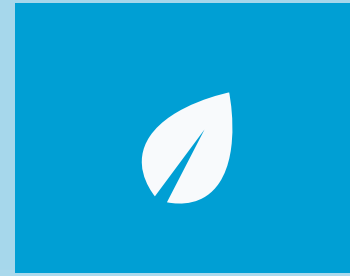
# Join the Sustainability Family

There is much to do!



## SUSTAINABILITY COURSES

<https://sustainability.illinois.edu/education/>



## ECO OLYMPICS

<https://icap.sustainability.illinois.edu/project/eco-olympics>



## RESEARCH

<https://sustainability.illinois.edu/research/seed-funded-research-2019/>



## GET INVOLVED

<https://sustainability.illinois.edu/actionsinitiatives/>

# Things to do at Home

---







# Things to do at home

Simple Sustainability Tips to Reduce Your Environmental Footprint

## GREEN COFFEE

Use a reusable k-cup and add your own coffee grounds (we recommend looking for bulk buys!). Alternatively, learn how to make french press or pour-over coffee!

## WATER CONSERVATION

Don't leave water running while brushing your teeth or washing hands. Try to find toilet paper wrapped in paper instead of plastic, and buy soap in bulk! Take shorter showers and run full loads of laundry to reduce water consumption.

## RECYCLING BINS

Have a separate bin in your house or dorm for recycling and read up on things that can be recycled at the University of Illinois.

## SLOW FASHION

Try to maximize use of what you have, learn to sew a few simple stitches, and use thrift stores instead of fast fashion brands when possible. If you're worried about cleanliness, visit an online curated consignment shop or use clothes rental services.

## REFUSE PLASTIC

Whether at a restaurant or the grocery store, refuse plastic! You can place produce loose into a reusable bag and they will be scanned at checkout! Similarly, at restaurants, bring your own containers or bag for leftovers. For takeout, ask for no utensils.

01

03

05

02

04



## BRING YOUR OWN

Get reusable straws, water bottles, forks, and plates for your dorm (and bring them with you!) Buy in bulk, and avoid single-use and over packaged goods.

06



## COLOR YOUR FOOD WITH THE RAINBOW

Incorporate more plant-based, whole foods products into your diet.

07



08



## USE LOW-FLOW APPLICANCES

From toilets to faucets, they can get the job done with less water

09



## TEMPERATURE CONTROL

Open windows instead of turning on AC, or put on a sweatshirt instead of turning up the heat

10



## READ LABELS AND BUY LOCAL

Learn where your products come from! Don't buy items that endanger wildlife. Instead, look for Fair Trade certified goods



## READ ONLINE

Almost everything is online, so take advantage! You can find books, newspapers, and magazines for free or discounted cost

## PLANTS

Instead of buying artificial flowers, grow your own! Gardening is a rewarding experience; there's nothing like watching a new leaf grow! Plants are decorative and act as natural air-fresheners

## KEEP UP AND SPREAD THE WORD!

Share your knowledge with friends, family, and peers to encourage a culture of sustainability. Learn more about local sustainability efforts and find your green opportunity by reading the 2020 iCAP!

Click [HERE!](#)

## UPCYCLE

Use thrift stores or the land fill as a last resort! Utilize online marketplaces and resale shops for your furniture, clothes, textbooks & classroom supplies, gardening tools, and more!

11

13

15

## NATURAL LIGHTING

Open up your blinds for some natural lighting and turn off your lamps. Not only does this save electricity, but it gives you some great vitamin D!

12

## UNPLUG!

Even when not turned on, things that are plugged in are using electricity. Unplug anything that you're not using; a surge-protected power strip is our suggestion for a simple transition!

14

16



# PLEDGE TO USE THE BIN!

Take U of I's pledge to always use the recycling bin, or to hold your recyclables until you find a bin, by scanning here:



# **Common Misconceptions - *Debunked!***

---





# Common Misconceptions



Some common, but false, ideas about sustainability







# Common Misconceptions

What Everyone Gets Twisted about  
Sustainability.

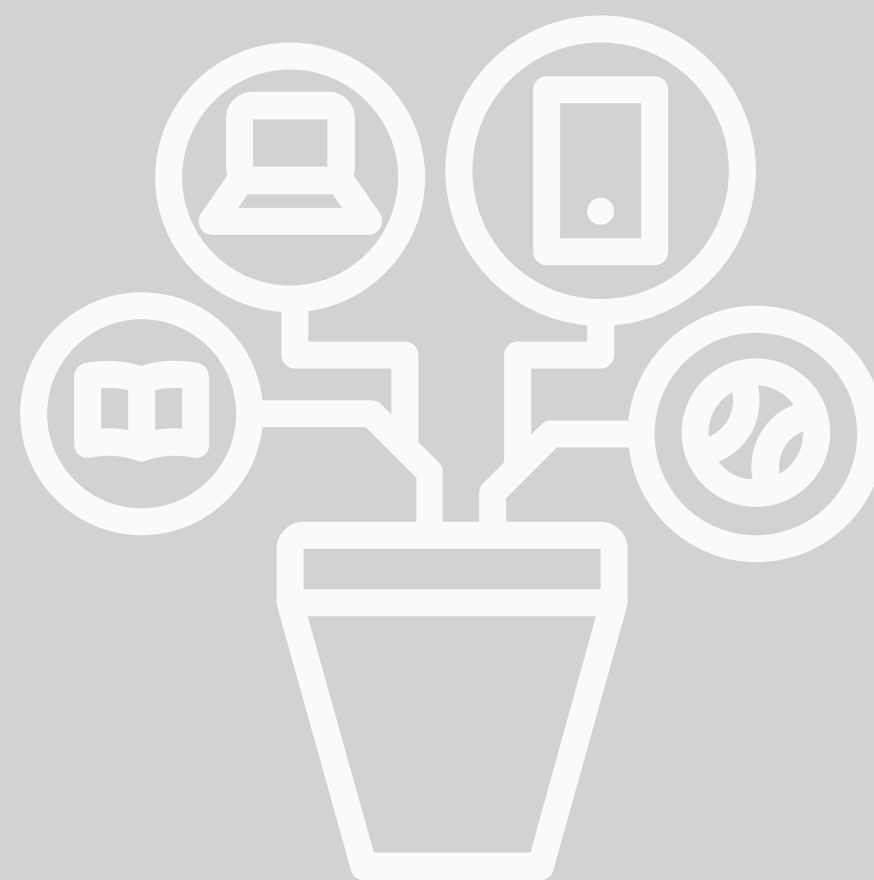




**iSEE**

# Resources

---







## **The Institute for Sustainability, Energy, and Environment (iSEE)**

Your home base for sustainability here at  
the University of Illinois.

### **iSEE Fellows Program**

Click for information on the requirements  
for a minor in sustainability.

### **Certificate in Environmental Writing**

Build your communication skills and have  
the chance to be featured in Q Magazine  
by completing this certificate.

### **Facilities & Services (F&S)**

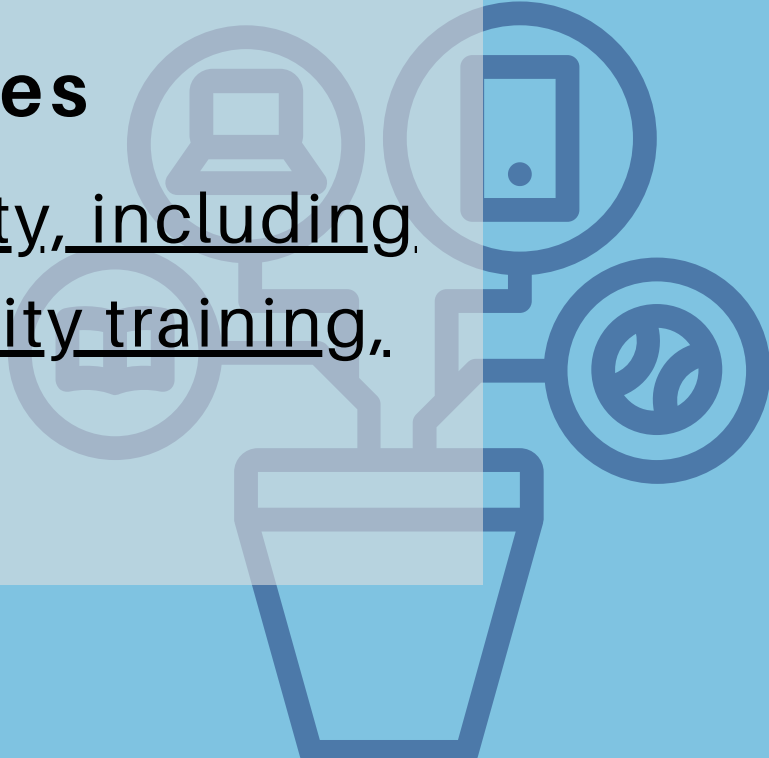
Integral to all work done on the ground  
and at the back-end of operations.

### **iCAP Portal**

Click to learn more about campus's  
strategic sustainability plan for achieving  
carbon neutrality by 2050, if not sooner.

### **Campus Resources**

All things campus sustainability, including  
contests, funding, sustainability training,  
and more.







## **Sustainable Transportation**

[Click for details on sustainable transportation options through F&S.](#)

## **Solar Farm & Waste Transfer Station Tours**

[Click here to sign up for schedule a tour.](#)

## **Residence Hall Maintenance**

[Submit a Non-emergency claim](#)

For an emergency...

during business hours 217-333-5656

outside business hours 217-333-2779

## **Sustainability Facts Sheet**

[Sustainability at Illinois tips, tricks, and opportunities.](#)

## **Recycling Guide**

[Your guide to recycling in the Champaign-Urbana area.](#)

## **Composting Guide**

[Illinois Extension composting resources and information.](#)

