



STUDENT SUSTAINABILITY COMMITTEE

Funding Application – Step II

Funding Criteria

A. General Rules

1. Students, faculty, and staff are encouraged to submit requests for funding. Student-led projects require a faculty or staff sponsor in order to have funds awarded.
2. Funding can only go to university-affiliated projects from students, faculty, staff, and departments.
3. All SSC projects must make a substantial impact on students. This may be a direct impact or an impact through education and engagement. All SSC funding is 100% from student green fees, so the projects funded by the students must benefit them.
4. SSC encourages innovation and new technologies – creative projects are encouraged to apply.
5. Unless a type of expense is specifically listed below as having restrictions, SSC can generally fund it. The items referenced below should not be taken as comprehensive list.

B. Things SSC Can Fund, On A Case-By-Case Basis

1. SSC can fund feasibility studies and design work; however, it must work toward ultimately addressing a sustainability need on campus.
2. SSC can fund staff positions that are related to improving campus sustainability. Strong preference will be given to proposals receiving matching funding from departments and/or plans for maintaining continuity of the position after the end of the initial grant.
3. SSC can fund outreach events with a central theme of sustainability, provided their primary audience is the general campus community.
4. SSC discourages funding requests for food and prizes but will consider proposals on a case by case basis that prove significant reasoning.
5. SSC can fund repairs and improvements to existing building systems as long as it works toward the goal of improving campus sustainability; however, a preference is shown to projects utilizing new or innovative ideas.
6. SSC can provide departments with loans for projects with a distinct payback on a case by case base. Loans will require a separate memorandum of understanding between SSC and departmental leadership pledging to repay the award in full and detailing the payback plan.

C. Things SSC Will Not Fund:

1. SSC will not fund projects with a primary end goal of generating revenue for non-University entities.
2. SSC will not fund personal lodging, food, beverage, and other travel expenses.
3. SSC will not fund any travel expenses.
4. SSC will not fund tuition or other forms of personal financial assistance for students beyond standard student employee wages.

Your Step 2 funding application should include this application, the supplemental budget form, and any letters of support.

Please submit this completed application and any relevant supporting documentation to Sustainability-Committee@Illinois.edu. The Working Group Chairs will be in contact with you regarding any questions about the application. If you have any questions about the application process, please contact the Student Sustainability Committee at sustainability-committee@illinois.edu.

General & Contact Information

Project Name: Curb cut improvement for bike path at the intersection of Main St and Mathews Ave

Total Amount Requested from SSC: \$30,000

Project Topic Areas: ☐ Land & Water ☐ Education ☐ Energy
☒ Transportation ☐ Food & Waste

Applicant Name: Sarthak Prasad

Campus Affiliation (Unit/Department or RSO/Organization): Facilities & Services

Email Address: sprasad9@illinois.edu

Check one:

- ☒ This project is solely my own **OR**
☐ This project is proposed on behalf of (name of student org., campus dept., etc.):

Project Team Members

Name	Department	Email
Sarthak Prasad	Facilities & Services	Sprasad9@illinois.edu
Stacey DeLorenzo	Facilities & Services	sdeloren@illinois.edu
Name	Department/Organization	Email Address
Name	Department/Organization	Email Address

Student-Led Projects (Mandatory):

Name of Faculty or Staff Project Advisor: Sarthak Prasad

Advisor's Email Address: sprasad9@illinois.edu

Financial Contact (Must be a full-time University of Illinois staff member)

Contact Name: Mike Alsip

Unit/Department: Facilities & Services

Email Address: alsip@illinois.edu

Project Information

Please review the proposal materials and online content carefully. It is highly recommended you visit a working group meeting sometime during the proposal submission process.

Please provide a brief background of the project, its goals, and the desired outcomes:

You may copy and paste your Step 1 application answer if nothing has changed.

The shared-use path along Oval Allee at Beckman Quad that connects White Street in Champaign and Main Street in Urbana, requires a curb cut improvement. The shared-use path for on the east side of the intersection of Main St and Mathews Ave between Hydrosystems Lab and Siebel Center compound ends in a curb. Bicyclists have to take a sharp turn to avoid a major drop from the curb.

This project proposes that we create one curb along the path coming from the Siebel Center towards the intersection of Main and Mathews and then connecting to the Hydrosystems Lab to Beckman Quad and all the way to White Street. This will enable our students, faculty, staff, and community members to safely navigate from City of Urbana to the North side of the campus to City of Champaign.

Where will the project be located? Are special permissions required for this project site?

If special permission is required for this location, please explain and submit any relevant letters of support with the application.

Intersection of Mathews and Main. This is City of Urbana street, and we are getting permission from City of Urbana to modify and improve the curb cut for bicycles at this intersection.

Other than the project team, who will have a stake in the project? Please list other individuals, groups, or departments affiliated directly or indirectly by the project. This includes any entity providing funding (immediate, future, ongoing, matching, in-kind, etc.) and any entities that benefit from this project.

Please attach letters of commitment or support at the end of the application.

Students, faculty, and staff at the University of Illinois Urbana-Champaign

City of Urbana (I am in the process of getting a letter of support from the City of Urbana, but it may be delayed)

How will this project involve and/or benefit students?

This includes both direct and indirect impact.

This is a high traffic bicycle and pedestrian activity corridor. This is a major connection that connects the White Street bicycle facilities in the City of Champaign to the Main Street bicycle facilities in the City of Urbana. It crosses the Engineering Quadrangle and runs through the art sculpture water feature at the Oval Allee.

This shared-use path is used by thousands for pedestrians and hundreds of bicyclists every day, most of whom are students, faculty, and staff at the University of Illinois. This project will make it safer for them to use this path and encourage more people to ride their bicycle.

How will you bring awareness and publicize the project on campus? In addition to SSC, where will information about this project be reported?

This project will be reported online on the iCAP Portal, Bike at Illinois website, F&S announcement and e-Updates.

Financial Information

In addition to the below questions, please submit the supplemental budget spreadsheet available on the Student Sustainability Committee [website](#). Submission of both documents by the submission deadline is required for consideration of your project.

Have you applied for funding from SSC before? If so, for what project?

Yes

Bike Registration Signs (2 times) – nearly \$6,000 in total

Eco-Counters (2 times) - \$140,000 in total

Strong Towns - \$2,000

Armory Avenue Bike Path - \$50,000

Bike Cage at ECE - \$3,000

If this project is implemented, will you require any ongoing funding required? What is the strategy for supporting the project in order to cover replacement, operation, or renewal costs?

Please note that SSC provides funding on a case by case basis annually and should not be considered as an ongoing source of funding.

We do not see a need for ongoing funding from SSC for this project. This is a design improvement project, and once implemented, will last forever.

Please include any other obtained sources of funding. Have you applied for funding elsewhere?

Please attach any relevant letters of support as needed in a separate document.

We have not applied for funding elsewhere for this project.

Environmental, Economic, and Awareness Impacts

How will the project improve environmental sustainability at the Urbana-Champaign campus? If applicable, how does this project fit within any of the [Illinois Climate Action Plan \(iCAP\)](#) goals?

This is a major bike path/shared-use path that connects the north side of the campus to both the cities. This path connects the White Street bicycle facilities in the City of Champaign to the Main Street bicycle facilities in the City of Urbana. It crosses the Engineering Quadrangle and runs through the art sculpture water feature at the Oval Allee.

This project is directly aligned with the Campus Bicycle Master Plan and iCAP 2020 objective 3.4.2 to Implement Campus Bike Plan.

How will you monitor and evaluate the project's progress and environmental outcomes? What short-term and long-term environmental impacts do you expect?

Some examples include carbon emissions, water conservation, green behavior, and reduced landfill waste.

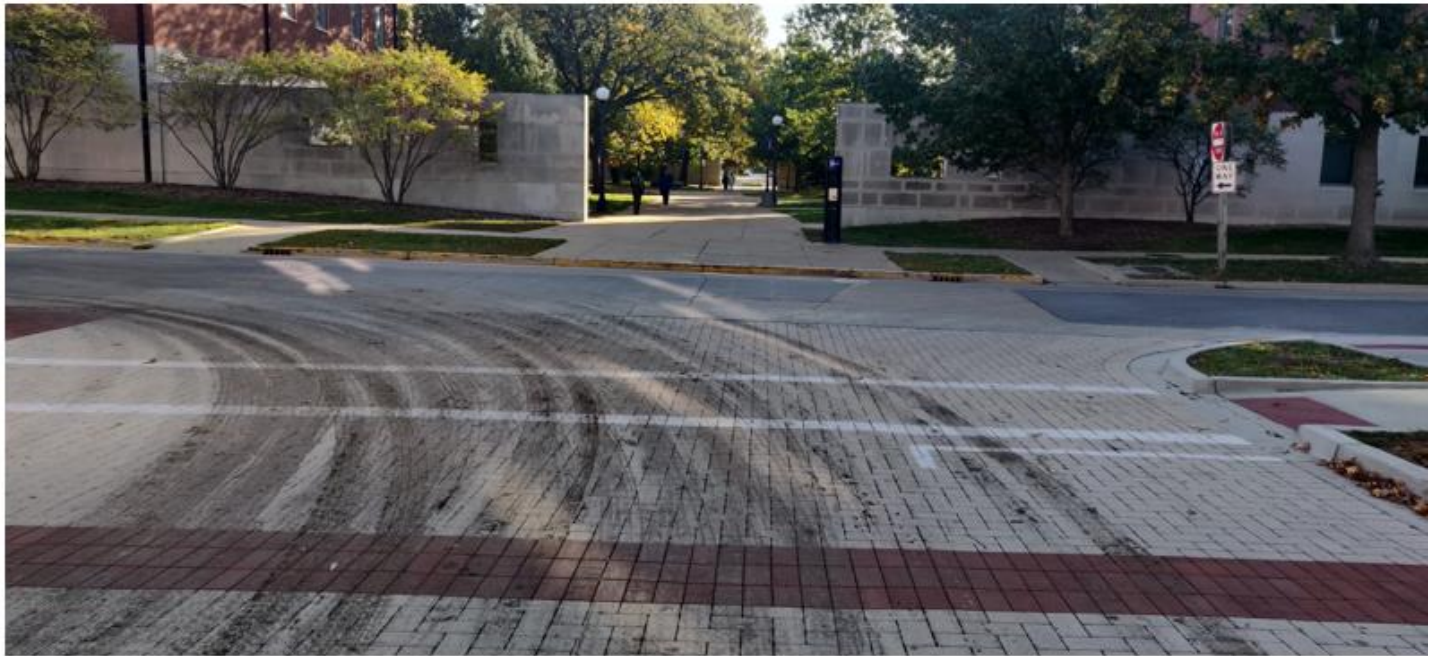
We expect a much safer commute for bicyclists travelling to, from, and through the Beckman Quad area.

What are your specific outreach goals? How will this project inspire change at UIUC?

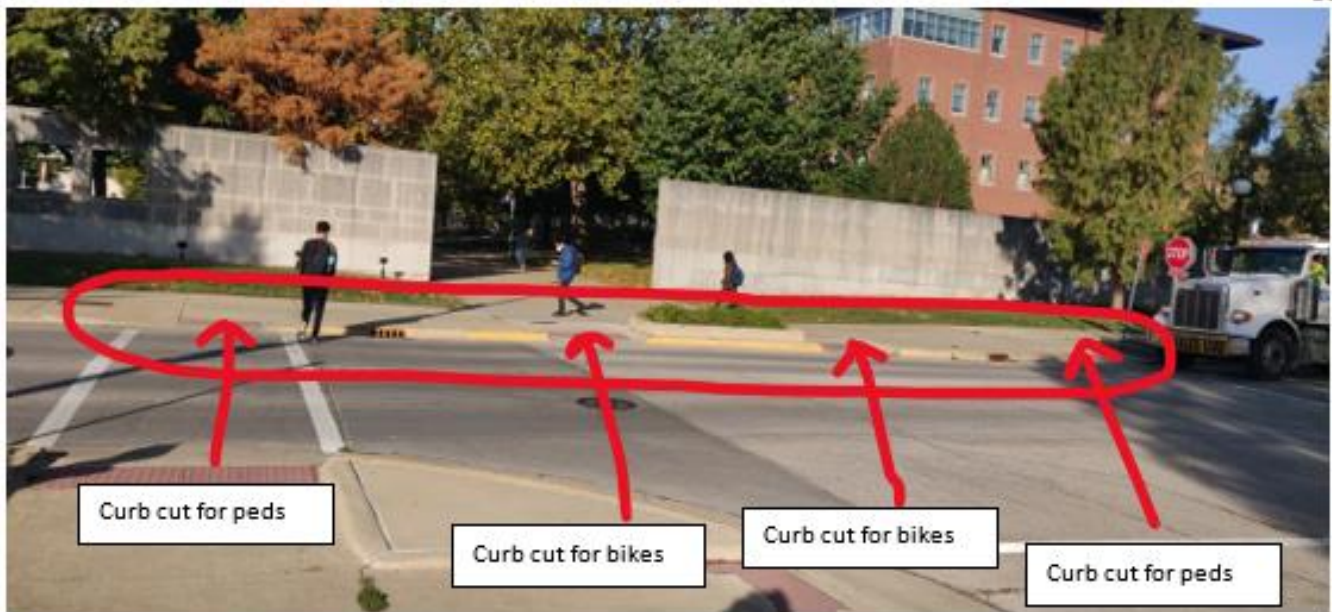
This project was brought to our attention (via [Campus Bicycle Feedback Form](#)) by students and staff at the University of Illinois. This project will improve the safety and connection of our campus with the cities of Urbana and Champaign.

If applicable, how does this project impact environmental injustice or social injustice?

This project will benefit all students, faculty, staff, and residents of the Urbana-Champaign area that uses this corridor to get to or from or through the Engineering Quad area.



Picture 1: Intersection of Main and Mathews



Picture 2: Intersection of Main and Goodwin