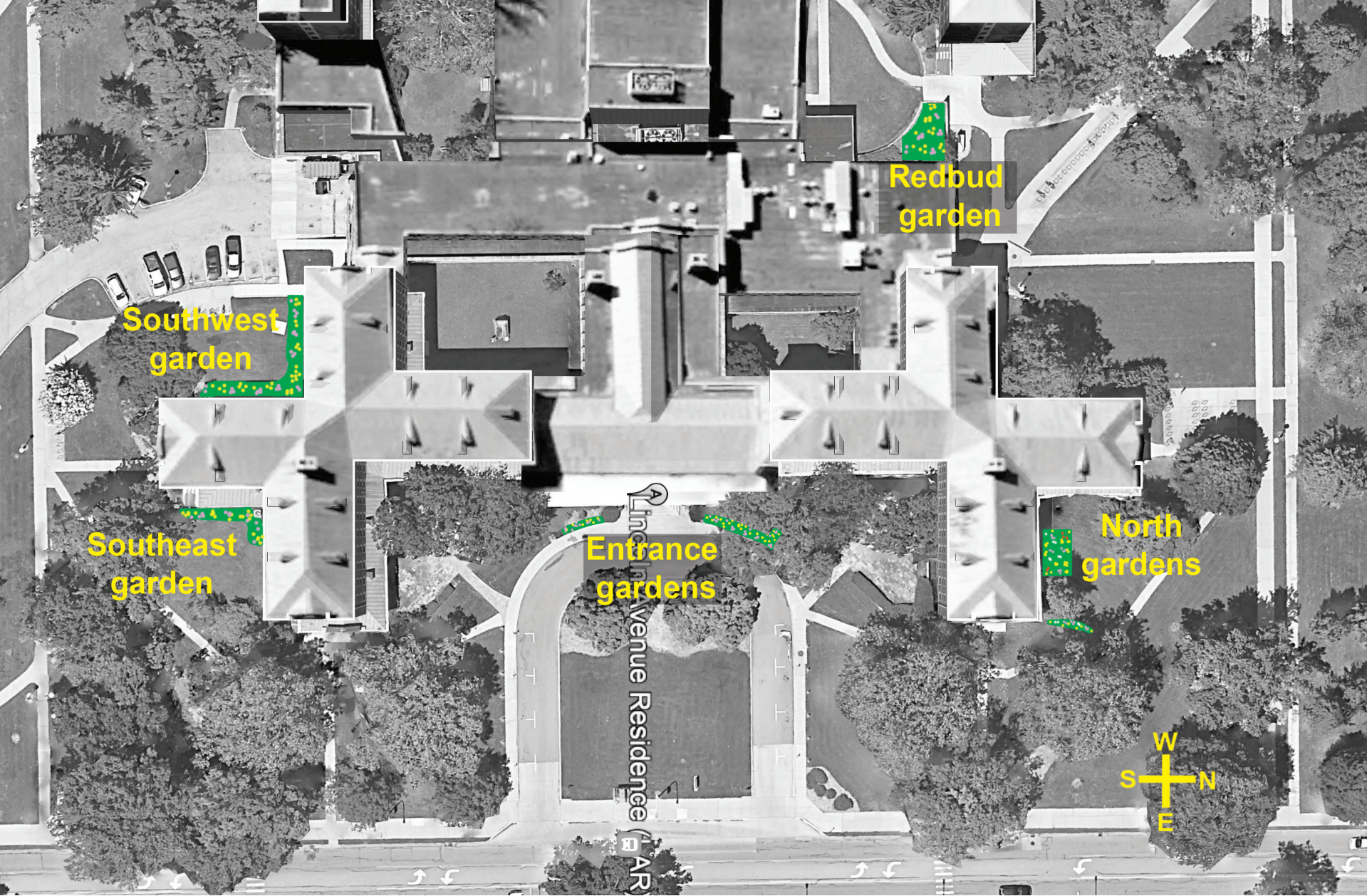


# **Restoration of Lincoln Avenue Residence Hall's Native Plant Gardens**

*Garden Map & Designs*



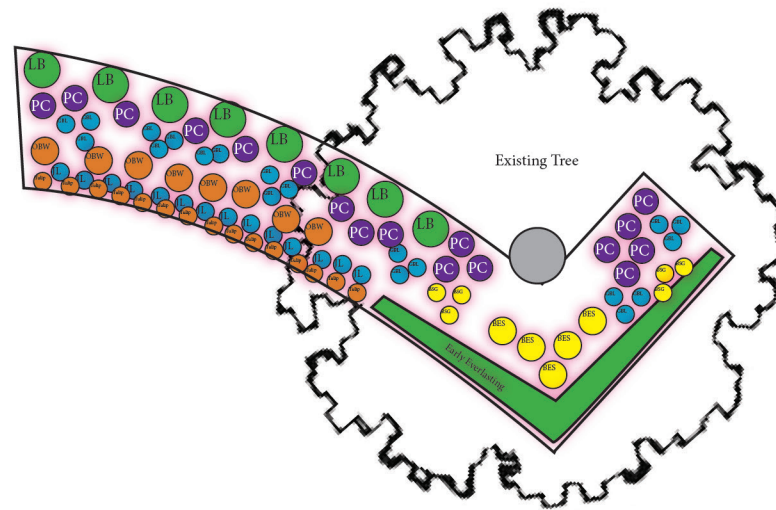
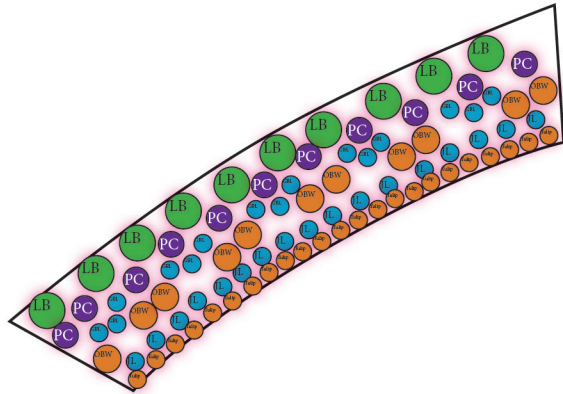
# Map of Garden Locations



# *Rendering of Entrance Garden Planting Design*



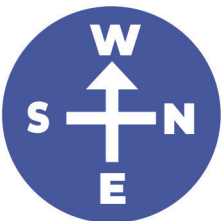
# Planting Design for Entrance Garden



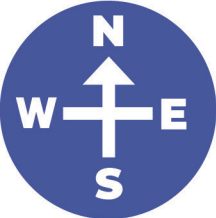
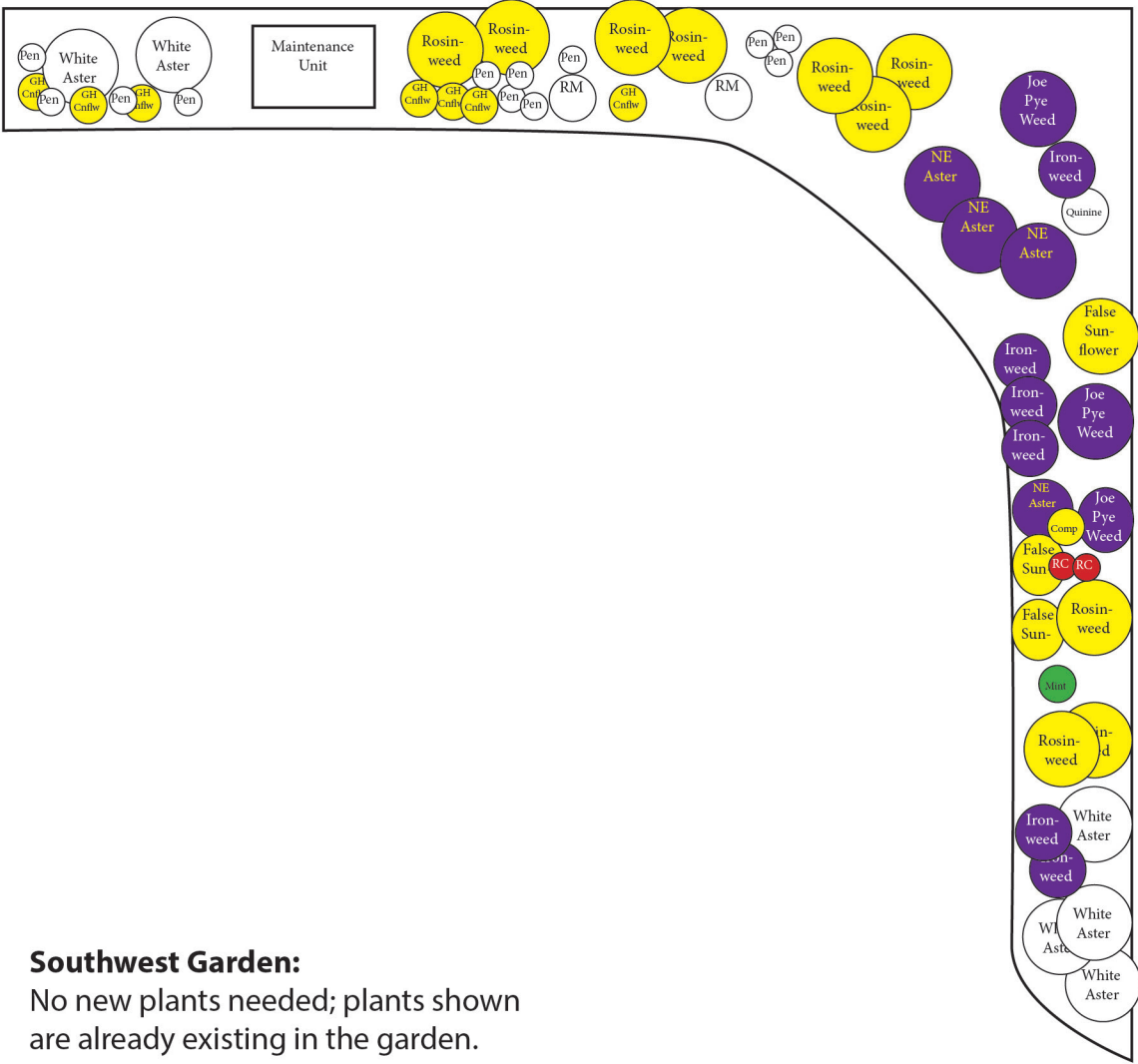
## Entrance Garden:

Garden is highly visible and a revamped design is needed to achieve desired aesthetics while also providing pollinator resources. Plants shown are those needed for new design:

- Little Bluestem (*Schizachyrium scoparium*): native grass, year-round visual interest
- Early Everlasting (*Antennaria plantaginifolia*): native groundcover, year-round visual interest
- Jacob's Ladder (*Polemonium reptans*): spring blooms
- Tulip (orange cultivar): spring blooms
- Purple Coneflower (*Echinacea purpurea*): summer/fall blooms
- Great Blue Lobelia (*Lobelia siphilitica*): summer/fall blooms
- Orange Butterflyweed (*Asclepias tuberosa*): summer blooms
- Blackeyed Susan (*Rudbeckia sp.*): summer blooms
- Blue-stemmed Goldenrod (*Solidago caesia*): late fall blooms

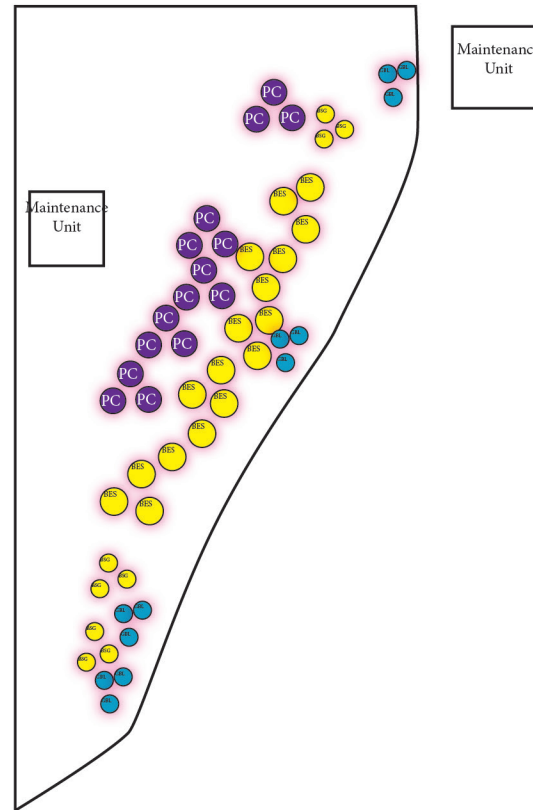


# Planting Design for Southwest Garden



**Southwest Garden:**  
 No new plants needed; plants shown are already existing in the garden. Garden is moderately visible. Monitor, weed, and trim to meet maintenance & aesthetic goals.

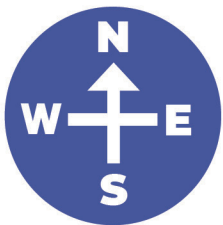
# Planting Design for Southeast Garden



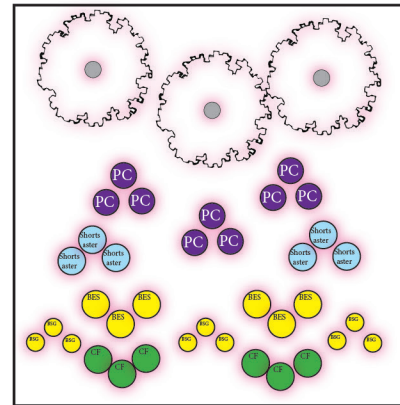
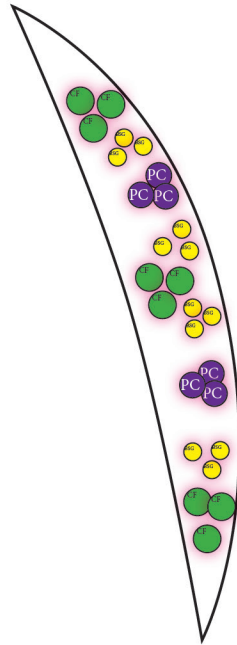
## Southeast Garden:

Garden is moderately visible and is disorderly and weedy. Plants shown are those needed to supplement existing plants, reestablish desired aesthetic, and expand pollinator resources:

- Purple Coneflower (*Echinacea purpurea*): summer/fall blooms
- Great Blue Lobelia (*Lobelia siphilitica*): summer/fall blooms
- Blackeyed Susan (*Rudbeckia* sp.): summer blooms
- Blue-stemmed Goldenrod (*Solidago caesia*): late fall blooms



# Planting Design for North Garden



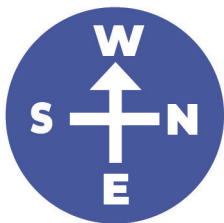
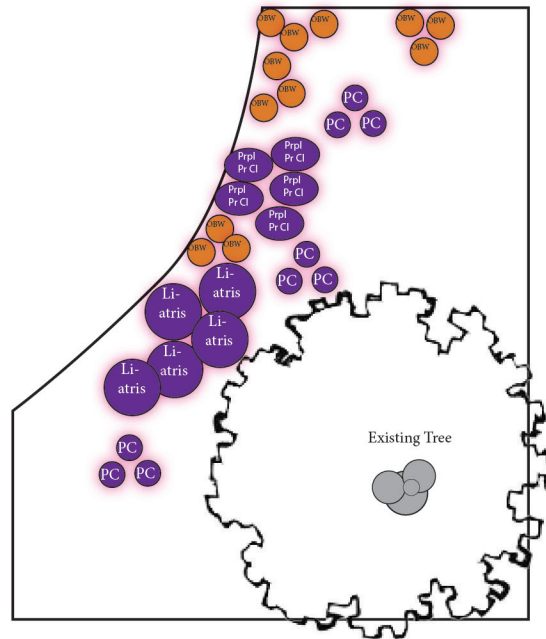
## North Gardens

Gardens are moderately visible, and are full of beautiful spring ephemeral flowers which die back in summer. But they have few summer/fall blooming plants. Plants shown are those needed to supplement existing plants, provide summer/fall aesthetics, and expand pollinator resources:

- Spicebush (*Lonicera benzoin*): native shrub
- Blackeyed Susan (*Rudbeckia* sp.): summer blooms
- Purple Coneflower (*Echinacea purpurea*): summer/fall blooms
- Blue-stemmed Goldenrod (*Solidago caesia*): late fall blooms
- Short's Aster (*Symphyotrichum shortii*): fall blooms
- Christmas Fern (*Polystichum acrostichoides*): native fern; year-round visual interest



# Planting Design for Redbud Garden



## Redbud Garden:

Garden is highly visible and is disorderly and weedy. Plants shown are those needed to supplement existing plants, reestablish desired aesthetic, and expand pollinator resources:

- Purple Coneflower (*Echinacea purpurea*): summer/fall blooms
- Orange Butterflyweed (*Asclepias tuberosa*): summer blooms
- Liatris (*Liatris* sp.): summer blooms
- Purple Prairie Clover (*Dalea purpurea*): summer blooms